

# MARCH 2020



Bethlehem  
LUTHERAN CHURCH

Traverse City, MI 49686  
(231) 947-9880



Website: [www.bethlehemtc.org](http://www.bethlehemtc.org)  
Email: [bethlehem@bethlehemtc.org](mailto:bethlehem@bethlehemtc.org)

Building Hours:  
Monday – Thursday, 9am to 3pm

Office Hours  
Monday – Thursday, 9am to 3pm

## Worship Times:

Saturday: 5 pm Celebrate! Worship  
Sunday: 8:30 am Traditional Worship  
9:45 am Education Hour  
11 am Modern Worship

Communion at all services

## Follow the STAR to Bethlehem!

### Our Mission...

**“We journey with God, to serve with love”**

### Our Vision...

*“As a community of believers journeying with God together, we at Bethlehem are called to serve with love by growing a premier youth ministry; enlivening Christian discipleship through lifelong learning, care, and spiritual formation; fostering a vibrant and inspiring worship experience; utilizing our natural setting and location for faithful creation care and outdoor ministry; and opening our doors always to be a “campus at the crossroads” for the mission and ministry of Jesus Christ.”*



**<sup>3</sup> A voice cries out:  
 'In the wilderness prepare the way of the LORD,  
 make straight in the desert a highway for our God.'**  
*- Isaiah 40:3*



Greetings, friends at Bethlehem.

Last month I shared with you the power of wilderness and desert settings and the things I learned in First Responder training. This month holds great excitement and joy to share with you one of the best Jesus movies I have ever seen. It is called "Last Days in the Desert," and it is both creative and faithful to the Spirit of the gospel. I hope you will consider joining Annie, myself and others on Sunday mornings and Lent Wednesdays, as we study the 40 days of Jesus' wilderness temptations in the context of his growth and journey, as well as ours.

Below is a quick "ad" for our 2020 Lenten Devotional that I also hope you will pick up and use, as we traverse this spiritual landscape together.

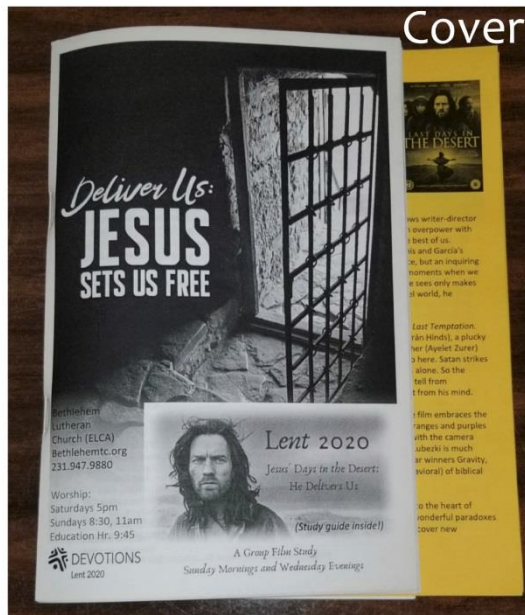
On the next page are some thoughts of deep discernment that I would like to add to our conversation about worship, especially for the Saturday and W.R. Task Force folks..

I also want to share that soon we will be looking for volunteers to embark on another exciting journey in our vision and mission at Bethlehem: the REVIVE program. We will be looking for 3 members, of varied ages and stages in life, who are willing to commit to a 2-year walk with 4 other churches in our synod, to collaborate with ideas, energy and wisdom. More to come in the days and weeks ahead.

Until then, we begin this Lenten journey with the words of John, Isaiah and in his own way, Jesus: "Make straight in the desert a highway for our God."

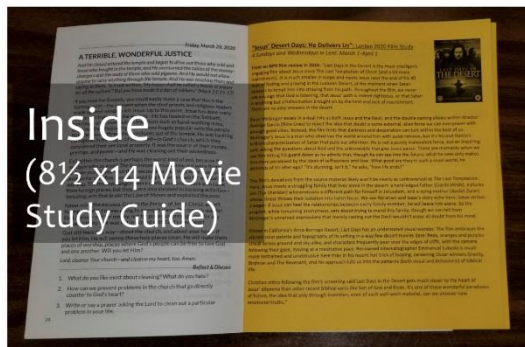
In peace,  
 Pr. Paul

## The 2020 BLC Lenten Devotional is HERE!!



Cover

This year we build upon our 2019 Lenten theme ("The Passion of Jesus, the Wilderness of Faith") by focusing on a sequel of sorts: "Jesus' Desert Days: He Delivers Us." For a large portion of our theme, we will once again use materials from our friends at the Lutheran Hour Ministries in St. Louis for the 40-Day Lenten devotional (pictured here) with a different twist. On Wednesday Lent Nights and on Sunday mornings during Adult Ed., we focus on the 2016 Jesus movie "Last Days in the Desert" (see study guide stapled inside) – a wonderful and creative portrayal of how Christ's temptation in the wilderness may have looked, for the 40 days after his baptism and before his "formal" ministry... Looking forward to the journey with you!



Inside  
 (8½ x14 Movie  
 Study Guide)

Pick up your copy in the church today!

-Pr. Paul

Bethlehem friends, and Worship Renewal Task Force teammates, below are some important considerations regarding the Saturday worship discernment process that I want to vocalize as your pastor:

- **Please resist the temptation to look at our charge as being “all about Pastor Paul”:** I have only heard this from a small number of people, but though it bears some immediate truth it is not the full picture. My fatigue with three services was growing for several years at BLC (manifesting later in the pursuits of interns, surveys about part-time pastor help and such, all to help carry the load). I wasn't always able to pinpoint the *cause*, nor did I want to make vocalizing the *symptom* (i.e. fatigue) “about me.” It is my sincere belief that Worship Renewal is not only addressing an unsustainable workload for the pastor, but also a top-heavy load with a church that started Saturday worship when its budget and staff was much larger, its worship style diversity was often simpler, and its membership was far greater. Without adapting forward, we simply cannot keep acting like a “big church” with “smaller (i.e. medium) church size and resources. To be sustainable, part of our solution may require creative scheduling and at least some extra volunteer help to cut costs and make clear that the congregation is invested with more than money (e.g. maybe a regular lay-led Taize service as a good cornerstone). We also have an exciting possibility to partner with a pastor from another ELCA church in the area (at little or no cost) with her leading Saturdays at BLC as often as once/month, providing worship alternatives for their members as they move forward, from 2 services/Sunday to 1.
- **While I have always (privately) wondered if 3 services/weekend was unsustainable, the implicit hope during the 2013-2014 VIEWorship landscape changes of BLC services and staff/sanctuary improvements** (making 3 worship styles, altering early service time on Sunday, hiring a Music Director and enhancing A/V) **was that it would lead to increased membership to help bolster the budget and grow ministerial support. That has only happened in small part and has not kept up with the attrition rates of an aging congregation. So for the time being I think we need to face the facts with care and practicality.** It also takes a lot of extra effort by pastor and staff to provide the worship diversity and quality we do, 3 times/weekend 52 weeks/year. That doesn't mean we have to give up having 3 diverse services, but it does mean we may need to get creative and utilize collaboration and compromise.
- **I am demonstrating my desire to compromise and contribute, financially and creatively.** In the February Council meeting, I wanted to address financial concerns for this effort by offering to forego a significant portion of my raise for 2020. This will add a modest amount (around \$450) to help finance a final solution. I am also open to leading more than one Saturday service/month *for some months* in the year as we move to partly divest Pr. Paul from the current presiding 3-4 Saturdays/month scenario. ***The Worship Renewal Task Force is working very hard to put together a proposal and timeline to present soon to Saturday worshippers and Council, continuing a collaborative effort in this important endeavor.*** Though we need to take our time to do this right, we ought not overly debate, analyze and thus paralyze ourselves. Real solutions are not infinitely discerned, and when we get mired in the weeds we drain ourselves instead of be/coming the church God is inviting us to be, with adventure and strength. This can be good for all of us.
- **Finally, I recently spoke at length with the only other pastor in our 113-church synod (located in Alpena) who holds a Saturday night service and 2 Sunday services each weekend, and these are his main takeaways:**
  - Remember that we are caring for each other in this process.
  - Fatigue has a way of being cumulative and sometimes catches up to us unexpectedly. Each person and pastor has a different story and may not have been able to articulate their fatigue until it becomes obvious (or even urgent.)
  - Most change brings some initial tension, but usually not for long when it is thoughtfully shepherded (We are being very thoughtful here – with task forces, inclusion, worship forums, transparency, etc)
  - Sometimes we have to put limitations on ourselves to protect our own wellbeing; burned out leaders become unhealthy, and “unhealthy people do unhealthy things,” he said. We all know we're less effective when we cannot take the time for ourselves and family.
  - The congregation loves its leaders and wants to help us all. If we keep love and care at the center, we can usually accomplish solutions that we all can live with, sometimes even thrive greater with.
  - Always think of sustainability when you start or re-assess workload. **That pastor's church just started their 3<sup>rd</sup> worship service (i.e. their 2<sup>nd</sup> Sunday worship) 6 months ago,** and before they did, the pastor put a condition upon it: “Let's assess things later on and make sure we can keep this all going.” Perhaps wise words for us too...Shalom!

# President's Corner

## March 2020

### Spring Transitions

A couple of days ago my wife and I were talking, she mentioned that Daylight Saving Time begins on March 8th with the first day of Spring on March 19,... what kind of March Madness is this? As I look out the window, there is a pile of snow that I have shoveled off my deck which is at least 9 feet high, the piles of snow that surround my drive are at least 7 feet high.....so this is Spring? March for me has always been a transition month. Winter is slowly ending with unpredictable weather as we move toward Spring. This is why Chris and I transition in March to a warmer climate, this year Arizona.

When you think about it, our lives are always transitioning. Perhaps a young married couple has their first child, parents transition when their last child leaves home and realize they are now empty nesters or perhaps we transition from our home to Assisted Care as we realize we need a bit more help than we used to. Sometimes transitions can be fast and shocking or perhaps it is a slower progression, either way it happens to all of us.

During the next Month or so, 40 days of Lent, we also prepare for a transition. Lent, a humble and reflective time in which we pray and repent against sin is our transition time as we move toward the celebration of Easter and the resurrection of Christ.

We at BLC go through many transitions, Spiritual, Personal, Family or others and from time to time these transitions can seem overwhelming and/or challenging. What I find so impressive is that our BLC family always seem to be there to provide care and support for those going through transitions. It is rare to find this kind of support in the world today and I am so grateful to be a member here.

See you all next month,

Chuck

Bethlehem Lutheran Church, Traverse City, Michigan  
"We Journey with God to serve with Love."

Minutes from the Church Council Meeting of January 21, 2020

CALL TO ORDER: Chuck Ardingo, President, at 6:06 p.m.

OPENING PRAYER: Tim Fox

ROLL CALL: Tim Fox, Secretary: In attendance: Chuck Ardingo, Pastor Paul Busekist, Phil Anderson, Jan Stretlien, Nancy Downer, Cindy Monroe, Leonard Graf, Mark McPherson, Jim Monroe, Katie Fox, Paul Wiemerslage and Tim Fox. Excused absence: Annie Slabaugh

VISITOR/S OR CONGREGATIONAL COMMENT: None.

APPROVAL OF THE AGENDA: A motion to approve the agenda for the 01/21/2020 Council Meeting, motion to approve by Mark McPherson, seconded by Leonard Graf, motion carried.

APPROVAL OF THE MINUTES FROM DECEMBER 17, 2019 COUNCIL MEETING: Motion to approve the minutes as amended by Leonard Graf, seconded by Tim Fox. Motion carried.

REPORTS:

PRESIDENT'S REPORT: Chuck Ardingo, President: 1) Chuck stated that the Budget of 2019 was a tough task and took a great commitment from all involved, including the Congregation. He mentioned that we as Council will review the Budget each quarter to ensure we don't have to present the Congregation with a deficit at the end of 2020. 2) Chuck mentioned that Christian Care is in great need of volunteers as are Worship and Music and Stewardship. These seem to be on going needs.

PASTOR'S REPORT: Pastor Paul Busekist: 1) Pastor mentioned that Art Newhouse would be preaching and presiding for the two weekends he will be in Tucson, Arizona for the Wilderness First Responder course. 2) Pastor stated that the Wilderness Responder Course will be his Continuing Education. It is an 80hour course and is part of his creation care program. He stated this will allow him to lead excursions to places like Manitou Island. 3) Pastor then spoke about Worship Renewal and that the first meeting was 1/05/2020. The issues he mentioned were Pastor fatigue with 3 services. He also said that on 2/08 and 2/15, after the Saturday worship services there would be an open forum for discussion of the Saturday service structure. Pastor mentioned more Holden Prayer services on Saturdays, along with more Taize services. Pastor will preach once per month on Saturday, is his thoughts. Pastor did mention that Zeke was receptive to the potential change. 4) Pastor stated that fast on the heels of the Renewal Worship is the Revive Program through the Synod and the choosing of the Revive Team. Pastor would like to have the Renewal Worship structure set before beginning on Revive. He mentioned that Bethlehem Vision will be selecting and recommending the Revive Team. 5) Back to Worship Renewal, Saturday service, the question was asked about combining a service with another Church/Congregation. Phil Anderson mentioned that we would run into issues of collections of giving and counting to name a couple of the issues that stick out.

TREASURER'S REPORT: Katie Fox: Prior to the meeting Katie provided Council with her December and YTD Financial Summary and various reports. 1) Katie stated that she will be providing Council with the minutes of the Financial Committee meeting each month. 2) Katie spoke on Church Attendance stating that for 2019 we have been averaging 145.3 versus 2018 153.1 and 2017 159.2. 3) Katie talked about the December income of \$38,338 which was over the Budgeted income of \$36,867. She then said December expenses of \$36,018 over budget of \$31,371. The reasons for the expense overage were, renovations to the rental house, Pastor's Continuing Education in November didn't hit the statement until November and repairs and tuning of the organ. 4) Katie then spoke on the Fiscal 2019 Net results, saying that we budgeted to have a deficit of \$7,208 at the end of 2019, but that we would end December, 2019 with a surplus of \$10,829, which means we are \$18,037 ahead of where we budgeted to be at this point in time. This is the result of strong contributions in October and November in combination with lower than budgeted expenses in August and September, helping to bring the Church into the black. 5) Katie then thanked the Stewardship Committee for their great effort during the Budget of 2020 process.

CONSENT CALENDAR: A motion to approve the various Committee Reports was made by Tim Fox and seconded by Leonard Graf, motion carried. Reports removed from the Consent Calendar: Christian Care Giving, Visions and Stewardship. (Membership Report to be discussed under New Business.) 1) Christian Care: Jan Stretlien, spoke of a family, member family, in need of meals and the days of the week and time that was best to deliver the food. (The family name has been omitted from these public for privacy concerns.) 2) Visions: Phil Anderson: Presented a Revive handout and discussed the Team Revive selection process. Phil stressed the need and desire to be transparent in the selection of the Revive Team. Chuck Ardingo also mentioned having a range of age in the comprising the Revive Team, from young to old. 3) Stewardship: Mark McPherson spoke regarding, a) The aging of our Church membership and the need for new and active members, b) how traditional Church attendance is becoming less and less each year, with an example of a Church out East that was started by direct descendants of the Mayflower but now it is set to close, c) and that the Synod is reporting overall Church attendance is down 13-16%, we at BLC are down only a small percentage.

At this point in the meeting on motion from Leonard Graf, Council broke for Executive Session. Seconded by Tim Fox. The discussion in Executive Session is not reported in the minutes for privacy concerns. Executive Session lasted approximately 20 minutes. Leonard Graf motioned to end Executive Session, Tim Fox seconded. Both motions carried.

#### OLD BUSINESS:

- A. Synod Revive (Discussed prior in Pastor's Report and the Vision's Report.)



## NEW BUSINESS

A.MEMBERSHIP/ REMOVAL OF NAMES/YOUTH MAILBOXES/NEW PACKET/WEBPAGE: Cindy Monroe: 1) Removal of Annie Callahan and Joanne Thomas from Membership, motioned by Cindy, Seconded by Chuck Ardingo. Motion carried. 2) There was discussion of youth mailboxes for our confirmed youth, 3) Cindy spoke on getting a new packet for visitors versus always the coffee mug, as we are down to about 35 mugs. 4) There was discussion on updating the webpage for more current information. Pastor was to send out the password for webpage access. This would be for a “members only access” portion.

B.COMPUTER REPLACEMENT: Chuck Ardingo: motioned to approve 2 new office computers, at a cost, not to exceed \$1,500. Seconded by Cindy Monroe. Motion Carried. Jim Monroe asked that we ensure that the information on the old computers is backed up for recordkeeping purposes.

C.QUARTERLY DONATION SELECTION: Phil Anderson: discussed and requested a charity for our non-ELCA donations for the quarter, dollar amount \$259, Jan Stretlien motioned to give the monies to a Human Trafficking Organization in the area. Seconded by Cindy Monroe. Motion Carried.

D.NEW CUSTODIAN: Leonard Graf: mentioned that the newly hired custodian resigned for personal reasons, so we will continue to search for a replacement.

E.REPLACEMENT TABLES IN FELLOWSHIP HALL: Chuck Ardingo: Replacing 12 tables, cost \$1,680, WELCA will donate \$500 and the rest of the monies from budget. Motioned by Cindy Monroe, seconded by Mark McPherson. Motion carried. Old tables are free to members or anyone.

VISITOR OR CONGRESSIONAL COMMENT: None.

GOOD OF THE ORDER: A time for general/undocumented comments by each Council Member is so desired.

LORD’ S PRAYER: The Lord’ s Prayer was said by all.

ADJOURNMENT: Motion to adjourn by Leonard Graf and seconded by Cindy Monroe, motion carried. Adjournment at 8:20 P.M.

Respectfully submitted,  
Tim Fox, Council Secretary

# ABRIDGED WITH ANNIE: A SUMMARY OF YOUTH EVENTS FOR MARCH...

Hello, Bethlehem! The Season of Lent is about to begin! It's always such a humbling experience to reflect on what it means to be a follower of Christ. I'm looking forward as well to all of the things we have planned for our youth during this time. We've got a lot coming up.



## MARCH HAPPENINGS ...

**Lent Nights** happen this month on **Wednesdays March 4<sup>th</sup>, March 11<sup>th</sup>, March 18<sup>th</sup>, March 25<sup>th</sup>** and **April 1<sup>st</sup>** from **5:30PM – 7:00PM**. We will be doing the traditional Lenten Meals before our programming. The Christian Education Committee will be leading the youth in some special projects during the programs and I urge you to come—there is something for the entire family!

Due to the Lenten Season we will **not** be having **BLUES, Middle School Night** or **High School Night**. We'll pick the fun back up in April, so stay tuned for that! Until then, I encourage everyone to join us at the Lent Nights!

I'm super excited to be joining some of our youth and another adult leader this month at **CHARGE** hosted by Living Water Ministries at the Great Wolf Lodge! We will be attending from **Friday March 20<sup>th</sup> – Sunday March 22<sup>nd</sup>** and I ask that you keep our youth in your prayers as we travel (although it's not very far) and that this experience equips and empowers our attending youth to learn, lead, laugh and love as an expression of their faith in Jesus.

The **Annual Chili Cook-off** will be taking place on **Sunday, March 29<sup>th</sup> after the Jubilee Service**. We will come together to enjoy different chili masterpieces, prepared by the hands of our BLC folks! If you would like to compete in the cook-off, there is a sign-up sheet in the Narthex; all are welcome to join and enjoy the food! Free-will donations will go towards our youth.

Be sure to mark your calendars for all these fun events!

As we go into the month of March I ask that you keep Bethlehem's youth and their families in your prayers as they go about their busy lives during this Lenten Season.

*"Humble yourselves therefore under the mighty hand of God, so that he may exalt you in due time."  
(1 Peter 5:6)*

Cheerfully in Christ,  
*Annie Slabaugh*

Director of Youth and Outreach  
Bethlehem Lutheran Church – Traverse City



# January 2020 Financial Summary

## Treasurer's Report

### **Attendance:**

Full year 2019 attendance = 846 for an average of 141.0

Full year 2020 attendance = 739 for an average of 123.2

Full year 2018 average attendance = 153.1

### **January Financial Results:**

January income of \$25,868 was \$7,373 under budgeted income of \$33,241. January expense of \$35,820 was \$795 under budgeted expense of \$36,615. January was budgeted to have a deficit of \$3,374, but BLC actually had a \$9,952 deficit. The increased deficit is primarily attributed to the lower than expected contributions in January. It is too early in the year to raise alarm over the deficit as one month of results does not show a trend.

---

### **American Cancer Society's 24-hour**

**Relay for Life:** Our loyal runner, Shelly (McAllister) Carpenter, is once again looking for walkers/runners, as well as, sponsors and donors for this event. It runs from 10am on Saturday, June 20 through 10am on Sunday, June 21<sup>st</sup>. at the Northwestern Michigan Fairgrounds. PLEASE call or text her at 231-631-4346 or [smcallister3@hotmail.com](mailto:smcallister3@hotmail.com) to help her support this worthy cause.



**The Wednesday Morning Drop-In Bible Study** is studying the "good news" of Matthew. Come. Bring your bible and share at 9:30 on Wednesday mornings in the Youth Room. All are welcome.



# Lent 2020

*Jesus Days in the Desert:  
He Delivers Us*

*A Group Film Study  
Sunday Mornings and Wednesday Evenings*

## LENTEN PROGRAMMING

WEDNESDAY FEBRUARY 26<sup>TH</sup> - 7:00 PM (ASH WEDNESDAY)

SUNDAY MARCH 1<sup>ST</sup> - 9:45 AM

WEDNESDAY MARCH 4<sup>TH</sup> - 5:30 PM

SUNDAY MARCH 8<sup>TH</sup> - 9:45 AM

WEDNESDAY MARCH 11<sup>TH</sup> - 5:30 PM

SUNDAY MARCH 15<sup>TH</sup> - 9:45 AM (SPECIAL PROGRAM)

WEDNESDAY MARCH 18<sup>TH</sup> - 5:30 PM (SPECIAL PROGRAM)

SUNDAY MARCH 22<sup>ND</sup> - 9:45 AM

WEDNESDAY MARCH 25<sup>TH</sup> - 5:30 PM

## HOLY WEEK *and* EASTER

SATURDAY APRIL 4<sup>TH</sup> - 5:00 PM (PALM SATURDAY)

SUNDAY APRIL 5<sup>TH</sup> - 8:30 AM & 11:00 AM (PALM SUNDAY)

THURSDAY APRIL 9<sup>TH</sup> - 7:00 PM (MAUNDY THURSDAY)

FRIDAY APRIL 10<sup>TH</sup> - 7:00 PM (GOOD FRIDAY)

SATURDAY APRIL 11<sup>TH</sup> - 7:00 PM (EASTER VIGIL)

SUNDAY APRIL 12<sup>TH</sup> - 8:30 AM & 11:00 AM (EASTER SUNDAY)

## **Lenten Wednesday Dinner Schedule**

### **5:30 PM**

**March 4** – Meatloaf and Mashed Potatoes, Salad, Ice-Cream Dessert

**March 11** – WELCA serving Soup or Pizza (to be determined)

**March 18** – Mac and Cheese, Salad, Pudding Dessert

**March 25** – Chili, Salad, Ice-Cream Dessert

**April 1** – Baked Potato Bar, Salad, Connie's Pies for Dessert



---

### **STAR and Bulletin Deadlines**

To be sure that your article or announcement is in STAR or Bulletin issue that you want, please note the following deadlines:

STAR: by the third Wednesday of the month

Bulletin: by the Wednesday before each weekend

Submission by email is preferred ([admin@bethlehemtc.org](mailto:admin@bethlehemtc.org)) with either the word STAR or Bulletin in the subject line. Please write exactly what you want in the article or announcement. Be sure to include all pertinent information about your event, i.e. dates, time, location, etc. You can put it in the body of the email or as an attachment as a Word doc or .pdf. Also, please include the month(s) for the STAR issue or the date(s) for the Bulletin issue that you need your article or announcement included. If you have any questions, please contact Barbara Oster when she works in the office on Thursdays. Also note that if you want an announcement on the weekly PowerPoint, please send to [annie.slabaugh@bethlehemtc.org](mailto:annie.slabaugh@bethlehemtc.org).

# Christian Education News

## March 2020



### LENTEN NIGHTS: EVERY WEDNESDAY

Lenten Nights begins this month!

March 4<sup>th</sup>

March 11<sup>th</sup>

March 18<sup>th</sup>

March 25<sup>th</sup>

April 1<sup>st</sup>

Christian Ed. will have special activities for children during the adult worship time.

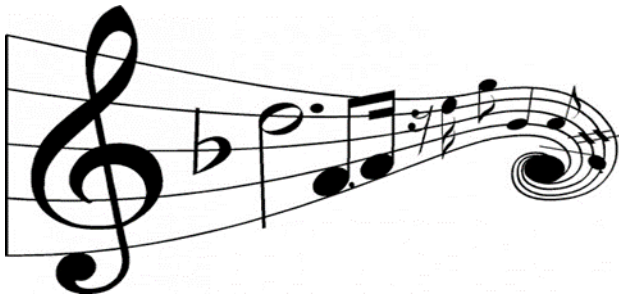
### Teachers needed for Sunday School

Pre-K

K-2<sup>nd</sup>

3<sup>rd</sup>-6<sup>th</sup>

This very brief commitment runs between services 9:45am-10:45am and simple lessons are pre-scripted with all materials.



### Calling All Musicians

Christian Ed. is looking for musicians to accompany our Sunday School opening songs.

We love piano music, but guitar, ukulele, or other instruments are also welcome! This short commitment is approximately 15-30" typically twice per month with very simple songs.

Please prayerfully consider this service ministry for our children.

### Vacation Bible School (VBS)

Dive in with us!!!

Make plans to join us at

“Great Bible Reef”  
July 20<sup>th</sup> to July 24<sup>th</sup>  
this summer!

We need MANY volunteers in MANY areas ☺







# WOMEN OF BETHLEHEM

WELCOME MARCH 2020!



*Look for the goodness in everyone you meet today and every day forward. Open your heart and become someone who gives a gift of peace, joy or hope...And watch the ripple effect of miracles and blessings unfold in your life. Unknown*

## UPCOMING EVENTS:

### **TRIENNIAL CONVENTION OF WOMEN OF ELCA:**

The 22nd Triennial Convention will be held July 14-16, 2020 in Phoenix, Arizona. This convention is the highest legislative authority within the organization. For further information, please check the WELCA website.

**SPRING FLING:** May 8th, 6:30 PM. Put the date on your calendar now and watch for further details.

### **CHURCH WOMEN UNITED LENTEN LUNCHEON SERIES:**

This Lenten devotional series begins on Thursday, February 27th from 11:30-1:00 PM at the Presbyterian Church on Westminster.

The remaining dates are March 5th, March 12th, March 19th, March 26th, and April 2nd. Check the kiosk for further information.

**WELCA SPRING GATHERING:** Mark April 25th on your calendars for the Spring Gathering being held at Hope Lutheran Church in Marlette, Michigan. Watch for further information.

**GATHER BIBLE STUDY FOR MARCH:** Session 3 is entitled "*Called to Serve*". *Jesus was clear: our two calls - loving God and loving neighbors - are linked.*



Evangelical Lutheran Church in America  
God's work. Our hands.

# ELCA GLOBAL LINKS

Stay informed. Be inspired. Get involved.



## Lutheran Church Women in India

The Bible Women of the Andhra Evangelical Lutheran Church use creative storytelling methods to bring the story of Jesus and the Bible to villages in the state of Andhra Pradesh, India. Telling the story one-on-one is helpful in reaching women who may not be able to read. Combining drama, song and dance brings Bible stories alive so they are even more relevant to people hearing these stories for the first time. Traditional storytelling plus building friendships over years of visiting villages and families leads many to the Christian faith.



THE  
LUTHERAN  
WORLD  
FEDERATION

## Lutheran Costa Rican Church Recognized for Refugee Response

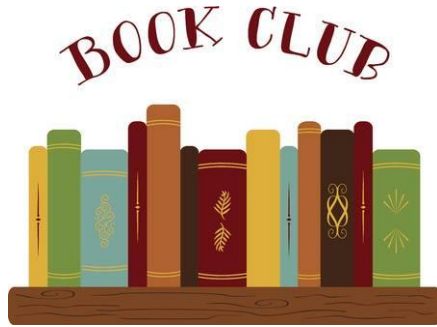
The United Nations High Commissioner for Refugees (UNHCR) recently recognized the Lutheran Costa Rican Church (ILCO), along with other organizations, with the “Living Integration Seal” award for supporting refugees and asylum-seekers. UNHCR representative Milton Moreno expressed “a sincere congratulation to the church for being a fundamental actor in humanitarian response.”



**Reminder**---All are welcome at our Council Meetings: Tuesday March 17 at 6 pm is our next meeting. There is a time slot for guests to speak at the beginning of the meeting.

**DEADLINE FOR COUNCIL REPORTS IS WEDNESDAY, March 11**

---



**Bethlehem Book Club:** Our club continues to meet the 4<sup>th</sup> Tuesday at 5:30 at the Cottage Café. The book for March 24 is *The Code Girls* by Liza Muncy. All are welcome. You can choose to eat and drink something or just share in the discussion.

**Finger Food Fellowship:** Thanks to all the wonderful volunteers who have signed up to bring treats on Sunday morning. This is an equal opportunity event. Please feel free to add your name to the sign up and bring anything that only requires a napkin. Hungry bellies appreciate that little bite of something.



## **SHOP AT FAMILY FARE AND HELP RAISE MONEY FOR QUILTS!!**

Shop at Family Fare, 905 E. 8<sup>th</sup> Street here in Traverse City (or at any Family Fare in the area) and help raise money for quilts!

*To warm others with more than a prayers,  
save register receipts when you shop Family Fare!  
Lutheran World Relief quilters need help from you.  
Bring Family Fare receipts to us that you could do.  
This helps raise money for the supplies it will take...  
for fabric, thread, and shipping necessary for the quilts we make!*

Questions? Please call Betty Rutila at 231-947-1013

**Interested in membership at BLC?** It is always wonderful to welcome new members to Bethlehem. To help you know a little more about our congregation and to help you find your spot in the life of our church the next orientation sessions are scheduled for two Sunday mornings at 9:45 on March 8 and March 15. This allows you to attend the 8:30 or 11:00 service and not have to come out for a meeting on a cold winter night. If you have not already expressed your interest please contact the church office at 947-9880 or Membership chair, Cindy Monroe at [cmonroe@chartermi.net](mailto:cmonroe@chartermi.net). New members will be received at the 10:00 Jubilee service on March 29.



**Become  
Part of  
*Our*  
Church  
Family**



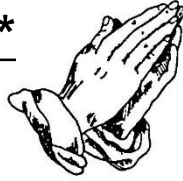
**Did you know Love Thy Neighbor has a Medical Equipment Loan Ministry?** If you, a friend or a family members needs a wheelchair, walker, cane, bathroom equipment or more, we can help! We have closet locations at Christ the King in Acme, Grace Episcopal mid-town, St. Patrick in the Grawn area and at the Love Thy Neighbor office on East Front Street. **Call 941-5683** to speak with us about a loan or a donation of equipment. Thanks to our partnership you can have love and care at home!

### **Habitat for Humanity**

Habitat for Humanity is always looking for volunteers:

- 1.Skilled/Unskilled volunteers to serve as site coaches leading and teaching groups of volunteers in finish carpentry. No experience necessary.
  - 2.Committee Members. Time commitment is about three hours a month. Committees needing members are Faith Relations, Family Selection and Events.
  - 3.Re-Store volunteers / Donation drives / Pickup and Delivery
  - 4.Lunch volunteers to feed construction site crews.
  - 5.Deconstruction teams to salvage materials to be sold at the Re-Sale Store.
- If you' re interested in helping out, please call Michelle Reichert at 231-941-4663

## Health Concerns\*



## The Power of Prayer

*Richard Fernholz, Nancy Smith, Hazel Lautner, Tom Miller, Margie Whitney, Jo Hasse, Ruth Boerman, Ellie Tacke, Bev Attwood, Roy Stowe, Priscilla Thompson, Marleen Baesch, Alvin Kober,, Lynn Hoyt, Jan Waisanen, Molly Eastman, Harper Wiemerslage, Chuck Hanson, Roy & Marilyn Dumond, Roy Weller, Emily Wilson, and Brenda Denoyer*

**Grand Traverse Pavilions:** Bev Attwood

**Medilodge:** Julie LaPeer

**Homebound:** Hazel Lautner, Ruth Boerman, Marleen Baesch

**Traverse Manor:** Margie Whitney, Marinan Bradford

**French Manor LaFranier:** Jo Hasse, Roy Stowe

**Boardman Lake Glens:** Inge Thomas, Bill & Dee Springer

**Samaritas (Acme):** Priscilla Thompson

**Munson Hospice House:** Ruth Boerman

**Hospital Visits:** Please let the church office know if you are going into the hospital for a scheduled procedure or an emergency so Pastor Paul can visit you.



**BLC' s PRAYER CHAIN** is always seeking partners in prayer.

**More volunteers are needed for this crucial ministry.**

**For more information or to set the Prayer Chain in motion, call Jan Stretlien @ 947-3265 or email [jstretlien@gmail.net](mailto:jstretlien@gmail.net)**

\*If you would like your name, or the name of a loved one, to appear on this list which appears here and in the weekly bulletin, please call the church office at 947-9880.

Are you checking for the latest BLC updates at: [www.bethlehemtc.org?](http://www.bethlehemtc.org?)

You saw Norm and others take the photos...be sure you see them at [www.bethlehemtc.org!](http://www.bethlehemtc.org!)

Good News...and great news...at [www.bethlehemtc.org...](http://www.bethlehemtc.org...)

# HONORING GOD'S CREATION

## PFAS

PFAS, or Per- and polyfluoroalkyl substances, is a family over 4,000-5,000 chemicals found everywhere in the environment, including, soil, surface water and groundwater as well as in most of all humans. Most blood serum tests will detect some amount of PFAS in all of us. PFAS is ever increasingly in the news including making its way into many political campaigns and states and the federal budget to address. This write-up will be short and simplified (if that is possible).

### What are PFAS?

It is a broad group of Per- and polyfluoroalkyl substances. The unique chemistry of PFAS chemicals, including being composed of long chains of carbon and fluorine bonds, make the chemicals incredibly stable and very persistent in the environment and humans. This chemistry is resulted in many calling PFAS "Forever Chemicals". Side effects in animals and humans for certain PFAS chemicals have been found to be dangerous and very low levels (parts per trillion).

### History of PFAS

PFAS was first invented in the 1930s and continued to be modified for many purposes sought to improve the quality of life. Such applications included: firefighting foam for chemical or electrical fires, non-stick coating, waterproof fabrics and manufacturing processes like metal finishing and coating. Additional commercial uses were found more products and applications. Harmful effects became known particularly for the PFAS chemicals of PFOA and PFOS, which currently are the most extensively studied and widely used around the world.

### Harmful effects of PFAS

As mentioned earlier, PFAS are often referred to as a "forever chemicals" because many forms of the chemicals, especially the longer chain PFAS chemicals, break down slowly. PFAS chemicals also easily binds with other substances. For example, some PFAS easily bind with chemicals in the human body and remain there for many years, or certain soil types. Research is being done into how PFAS chemicals affects the human body possibly causing some types of cancer and harmful reproductive effects. Research is also being done as to the extent it is found in our soil, ground water, surface water and drinking water. Drinking water is currently of particular concern.

### What is being done today?

1. The United States has banned the production of PFOS and PFOA (currently thought to be the most dangerous forms of PFAS). Products made of these substances can still be imported.
2. Regulations are being drafted and implemented at state, federal and local levels regarding the disposal of materials containing PFAS. These regulations are administered and implemented by governmental agencies and their employees. As research continues and evolves, regulations will need to be revised and ways to measure both the levels of PFAS and the damage they cause will need to be improved.

### What can we do?

The biggest thing is to stay informed as a society, support credible science and research and follow-up governmental action. This issue is not something that we as individuals can solve. Some sources suggest certain products we should not use. With PFAS ubiquitous in our world, as well as claims and counter claims of its effects on humans, recommendations on the use of specific products will not be discussed in this article.

### Future Discussion

There will be another article on PFAS. If there are questions you want addressed or if you want to help with the article, contact Judy Strickland at (231) 620-6765.



# Sledding with the Youth



# Our Bethlehem Family



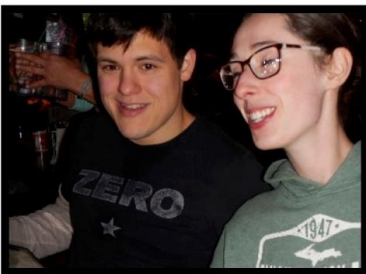


# Skiing at Crystal Mountain





# Skiing at Crystal Mountain



# BLC Contacts

PLEASE NOTE SEVERAL ADDRESS UPDATES

## Church Office

Pastor Paul Busekist	<a href="mailto:paul.busekist@bethlehemtc.org">paul.busekist@bethlehemtc.org</a>
Admin. Asst. Sharon Weller	<a href="mailto:admin@bethlehemtc.org">admin@bethlehemtc.org</a>
Admin. Aide Barbara Oster	<a href="mailto:admin@bethlehemtc.org">admin@bethlehemtc.org</a>
Bookkeeper, Phil Anderson	<a href="mailto:bookkeeper@bethlehemtc.org">bookkeeper@bethlehemtc.org</a>
Sharon Weller, Music Director	<a href="mailto:sharon.weller@bethlehemtc.org">sharon.weller@bethlehemtc.org</a>
Annie Slabaugh, Youth & Outreach Director	<a href="mailto:annie.slabaugh@bethlehemtc.org">annie.slabaugh@bethlehemtc.org</a>
Website	<a href="http://www.bethlehemtc.org">www.bethlehemtc.org</a>

## Church Council

Chuck Ardingo, President	<a href="mailto:president.council@bethlehemtc.org">president.council@bethlehemtc.org</a>
Leonard Graf, Vice President	<a href="mailto:vicepresident.council@bethlehemtc.org">vicepresident.council@bethlehemtc.org</a>
Tim Fox, Secretary	<a href="mailto:secretary.council@bethlehemtc.org">secretary.council@bethlehemtc.org</a>
Katie Fox, Treasurer	<a href="mailto:treasurer.council@bethlehemtc.org">treasurer.council@bethlehemtc.org</a>
Jim Monroe, Financial Sec.	<a href="mailto:financialsecretary.council@bethlehemtc.org">financialsecretary.council@bethlehemtc.org</a>
Phil Anderson, Bethlehem Vision	<a href="mailto:Bookkeeper@bethlehemtc.org">Bookkeeper@bethlehemtc.org</a>
Jan Stretlien, Christian Care Giving	<a href="mailto:christiancaregiving.committee@bethlehemtc.org">christiancaregiving.committee@bethlehemtc.org</a>
, Christian Ed.	<a href="mailto:christianeducation@bethlehemtc.org">christianeducation@bethlehemtc.org</a>
, Fellowship	<a href="mailto:fellowship.committee@bethlehemtc.org">fellowship.committee@bethlehemtc.org</a>
Cindy Monroe, Membership/Evangelism	<a href="mailto:membershipevangelism.committee@bethlehemtc.org">membershipevangelism.committee@bethlehemtc.org</a>
, Property (Carl Lehto-Not on Council)	<a href="mailto:property.committee@bethlehemtc.org">property.committee@bethlehemtc.org</a>
Mark McPherson, Stewardship	<a href="mailto:stewardship.committee@bethlehemtc.org">stewardship.committee@bethlehemtc.org</a>
Nancy Downer, Worship and Music	<a href="mailto:worship.committee@bethlehemtc.org">worship.committee@bethlehemtc.org</a>
Paul Wiemerslage, Youth/Y2A	<a href="mailto:youth.committee@bethlehemtc.org">youth.committee@bethlehemtc.org</a>

If you have an interest in serving on any of the above Committees,  
Please contact the Committee Chairperson(s).

BLC - Non assigned mtg. space, Conference Room, Entire BLC, Event Held Outside of BLC, Fellowship Hall, Gathering Space, Mar 2020 (Eastern Time - New York)  
 Lower Room 2, Lower Room 3, Lower Room 4, Nursery Room 1, Nursery Room 3, Nursery Room No #, Sanctuary, Youth Room

Sun	Mon	Tue	Wed	Thu	Fri	Sat
8:30am - Worship Service 9:45am - Adult Education 9:45am - Membership & 9:45am - Sunday School 9:45am - WELCA Board 11am - Modern Worship - S 12:30pm - Wor. & Mus. 1pm - Dave Warne 1pm - Drive My Way 1:15pm - Confirmation	10am - Alanon-LR2 10am - Staff Meeting 3pm - Lessons/Weller 4pm - Drive My Way 6:30pm - Gambliers	9am - LWR Quilters 9am - Prayer Shawl 9am - Property Work Group 4pm - Drive My Way 4:30pm - Set-Up AAUW 5:30pm - AAUW Meeting 6:30pm - Christian Ed Mtg.	9:30am - Neighborhood 3pm - Lessons/Weller 4pm - Drive My Way 5:30pm - Lenten Wed.	4pm - Drive My Way 5pm - Worship Team 5:30pm - ACOA (LR) 6pm - Bell Choir Rehearsal 7pm - Vocal Choir	10am - Alanon-LR2	5pm - Worship Team
8:30am - Worship Service 9:45am - Adult Education 9:45am - Sunday School 11am - Modern Worship - S	10am - Alanon-LR2 10am - Staff Meeting 3pm - Lessons/Weller 4pm - Drive My Way 5pm - Finance Cmte. 6:30pm - Gambliers	9am - LWR Quilters 9am - Prayer Shawl 9am - Property Work Group 12pm - Sarah Circle 1pm - Ruth Circle @ 4pm - Drive My Way 4:30pm - Executive 6pm - Y2A Mtg.	9:30am - Neighborhood 2pm - ALS Foundation 3pm - Lessons/Weller 4pm - Drive My Way 5:30pm - Lenten Wed.	9am - Baby Pantry-FH 1pm - Rebecca/Ann Circle 4pm - Drive My Way 5pm - Worship Team 5:30pm - ACOA (LR) 6pm - Bell Choir Rehearsal 7pm - Vocal Choir	10am - Alanon-LR2 6pm - Faith and Family	5pm - Holden Evening
8:30am - Worship Service 9:45am - Adult Education 9:45am - Sunday School 11am - Christensen SG 11am - Modern Worship - S 12:30pm - Monroe SG 1:15pm - Confirmation	10am - Alanon-LR2 10am - Staff Meeting 3pm - Lessons/Weller 3pm - Oster SG 4pm - Drive My Way 6:30pm - Gambliers	9am - LWR Quilters 9am - Prayer Shawl 9am - Property Work Group 4pm - Drive My Way 6pm - Council Meeting 7pm - Lauther SG @ at the	9:30am - Neighborhood 3pm - Lessons/Weller 4pm - Drive My Way 5:30pm - Lenten Wed.	4pm - Drive My Way 5pm - Worship Team 5:30pm - ACOA (LR) 6pm - Bell Choir Rehearsal 7pm - Vocal Choir	CHARGE 10am - Alanon-LR2 10am - Sew Pieciful 4pm - Drive My Way	1pm - Drive My Way 5pm - Celebrate! Band
CHARGE 8:30am - Worship Service 9:45am - Adult Education 9:45am - Sunday School 11am - Modern Worship - S 1pm - Drive My Way	10am - Alanon-LR2 10am - Staff Meeting 3pm - Lessons/Weller 6:30pm - Gambliers	9am - LWR Quilters 9am - Prayer Shawl 9am - Property Work Group 5:30pm - Book/Supper Club 5:30pm - Newcomers	9:30am - Neighborhood 1pm - Johnson SG (Offsite) 3pm - Lessons/Weller 5:30pm - Lenten Wed.	9am - Baby Pantry-FH 1pm - Lehto SG 5pm - Worship Team 5:30pm - ACOA (LR) 6pm - Bell Choir Rehearsal 7pm - Vocal Choir	10am - Alanon-LR2	5pm - No Service
10am - Jubilee Service 11am - Chili Cook Off	10am - Alanon-LR2 10am - Staff Meeting 3pm - Lessons/Weller 6:30pm - Gambliers	9am - LWR Quilters 9am - Prayer Shawl 9am - Property Work Group				





**REYNOLDS JONKHOFF**  
*Funeral Home & Cremation Services*

305 Sixth St. 947-6347

[www.reynolds-jonkhoff.com](http://www.reynolds-jonkhoff.com)

For six generations... the Jonkhoff family and caring staff are the ones you can trust and depend on... today and tomorrow.



1029 Carver Street  
Traverse City, MI 49686  
(231) 947-7670  
Fax (231) 947-7199  
[www.deweesehardware.com](http://www.deweesehardware.com)

**BLOXSOM** ROOFING & SIDING

*Generations of Knowledge and Trust*  
3733 Blair Townhall Road - Traverse City, MI 49684  
Ph: 231.943.8781 - Fax: 231.943.9146  
[www.bloxsomroofing.com](http://www.bloxsomroofing.com)



DELIVERING ENERGY EFFICIENCY SOLUTIONS  
**Temperature Control, Inc.**  
1623 Northern Star Drive • Traverse City, MI 49696  
Control Systems • Air Conditioning • Heating  
Commercial • Industrial  
Phone (231) 922-1862

**Our Locations:**

**Covell**  
*Funeral Homes*

Phone: (231) 946-6515  
Fax: (231) 946-1099



232 E. State Street  
Traverse City, MI 49684  
200 N. Brownson Avenue  
Kingsley, MI 49649  
312 Pine Street  
Elk Rapids, MI 49629

[www.CovellFuneralHomes.com](http://www.CovellFuneralHomes.com)

Monthly donation: 1/16 page \$25; 1/8 \$50; 1/4 \$80. Pay for a year in full---get 1 Month Free Questions??? Please contact Barbara Wright 231-735-3227 or [mzbright9006@yahoo.com](mailto:mzbright9006@yahoo.com) or Renae Wells at 616-204-8900 or [wellsrenae17411@gmail.com](mailto:wellsrenae17411@gmail.com). Make checks payable to BLC...put Renae Wells name on envelope.