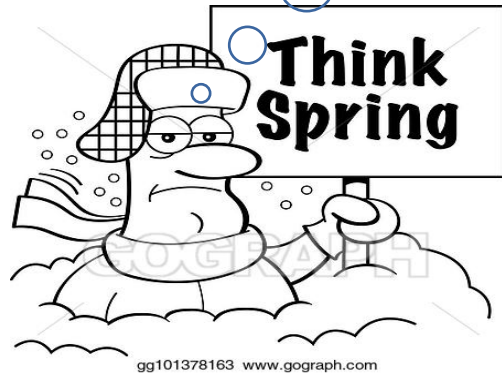


MARCH 2019



Bethlehem
LUTHERAN CHURCH

Traverse City, MI 49686
(231) 947-9880



gg101378163 www.gograph.com

Website: www.bethlehemtc.org
Email: bethlehem@bethlehemtc.org

Building Hours:

Monday – Thursday, 9am to 3pm

Office Hours

Monday – Thursday, 9am to 3pm

Worship Times:

Saturday: 5 pm Celebrate! Worship
Sunday: 8:30 am Traditional Worship
9:45 am Education Hour
11 am Modern Worship

Communion at all services

Follow the STAR to Bethlehem!

Our Mission...

“We journey with God, to serve with love”

Our Vision...

“As a community of believers journeying with God together, we at Bethlehem are called to serve with love by growing a premier youth ministry; enlivening Christian discipleship through lifelong learning, care, and spiritual formation; fostering a vibrant and inspiring worship experience; utilizing our natural setting and location for faithful creation care and outdoor ministry; and opening our doors always to be a “campus at the crossroads” for the mission and ministry of Jesus Christ.”



*"I am about to do a new thing;
now it springs forth, do you not perceive it?
I will make a way in the wilderness
and rivers in the desert— Isaiah 43:19 (NRSV)*

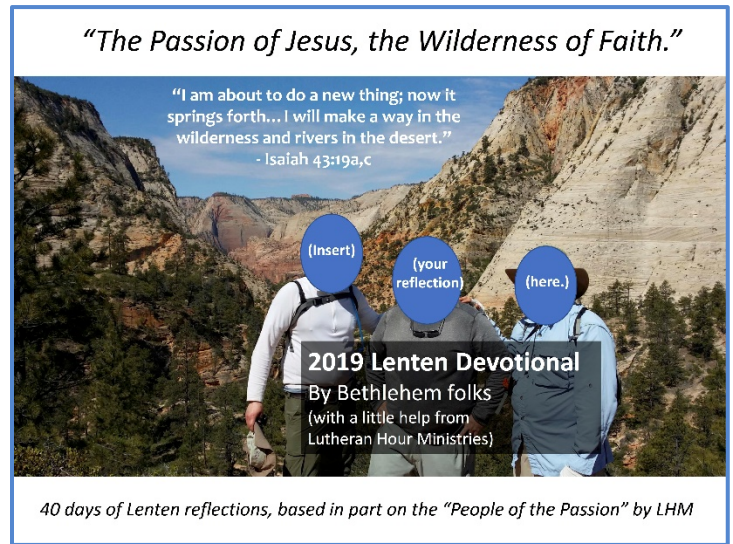


Friends at Bethlehem,

The above bible verse is the central verse for our new (hot off the press!) Lenten Devotional. It was co-created by you, me, Lutheran Hour Ministries, meditations from naturalists and prophets alike (i.e. John Muir, etc), and we've called it "The Passion of Jesus, the Wilderness of Faith." Please feel free to pick up a copy of it in the Gathering Space, office or sanctuary, and we hope you enjoy!

Also: We are approaching a new "trailhead" together (and I don't mean the wilderness!) ☺

This March we find out from Wartburg Seminary in Iowa whether we will be receiving (i.e. welcoming) an intern for the 2019-2020 year! While that is exciting, should we get an intern, it will also be a *call to action: much work needs to be done* to ready ourselves as leaders, teachers, hosts and – yes, even students – of such an endeavor. From securing housing, to making sure he/she has adequate programming and spiritual support, we will rally together.



(Front page of YOUR 2019 Lenten Devotional)

If we by chance to not get an intern this year, a whole other series of staffing and ministry preparations would need to be underway. Join me in prayer these next few weeks as we seek the guidance of the Holy Spirit in our midst!

New Adult Ed. Series to Accompany the Lenten Devotional

Ash Wednesday is the day we begin our Lenten journey in penitence and reflection. What better time to begin a new set of devotions for our 40-walk, co-authored by YOU? In addition, **each Sunday morning (and Wednesday evening) in Lent, starting on March 10th we will engage in a new perspective for our 2019 Lenten theme "The Passion of Jesus, the Wilderness of Faith" as follows:**

Sun 3/10 & Wed 3/13: "Creation Wild: God Meets Us in The Scripture of Nature"

Sun 3/17 and Wed 3/20: "Re-Created: A New Heaven and Earth"

Sun 3/24 and Wed 3/27: "Wilderness Prophets, Part 1"

***Sun 3/31 (Jubilee – no class) but Wed 4/3** "Wilderness Prophets, Part 2"

Sun 4/7 and Wed 4/10: "The Passion of Jesus Transforms"

We will draw heavily on modern works of wilderness spirituality, along with scripture and Lenten reflections. Hope to see you there!

President's Report

March 2019



Give thanks to the Lord, for he is good; His love endures forever.

I Chronicles 16:34

I want to talk to you a little bit about thankfulness. I am very thankful for this wonderful church we call Bethlehem Lutheran Church. The building, yes. However more importantly it is the people who are the real Church. There are so many families in the congregation that have stepped up and given of themselves in terms of their time, talent, and treasure. I don't want to try to name them all as I know I will miss some. So instead, I want to give you all a group "hug" and a shout out, "THANKS!"

Being thankful isn't just for the Thanksgiving holiday or special occasions. Scripture tells us to be "thankful in everything, in all circumstances. When we find ourselves overwhelmed with burdens and worried about tomorrow, we can praise God for who He is and His promise to never leave us or forsake us. We have been blessed with the free gift of salvation and eternal life! God desires to enrich us so that we can, not only meet our needs, but so we may overflow in generosity. When we give freely in Jesus' name, the thankfulness of its recipients is given to God—and not to us.

I am thankful that it is now March – the Teaser Month. We get a glimpse of spring and new growth. I start thinking about the motor home and the call of the open road and the woods. To me, it is a time with family and enjoying God's outdoor creation. The Lenten season is about to begin and this is also to time of reflection and gratitude for the ultimate sacrifice made He for all of us.

I hope you take time to be thankful this month and, in gratitude for all God has done in your life, take time to bless someone else as you have been blessed.

Thanks be to God,

Jim Parkinson
Church Council President

FROM THE DESK OF YOUTH DIRECTOR AND OUTREACH



Can you believe it's already March?! Only 3 more months of programming, then it is summertime (and no more cabin fever)!

Some recaps and upcoming events...

First, we had an amazing **Family Ski Trip!** A huge THANK YOU to everyone who helped out, donated, and prayed for us! We're excited to keep this tradition going!

Our February **BLUES** Movie Night was a smaller crew, but we had a wonderful time together! Our next hang-out will be on **Friday, April 26th**, a **GAME NIGHT!** More details to come... Please note that we aren't having BLUES (or a High School Night) in March because it's **LENTEN SEASON!** We encourage kids to come out for our Wednesday night dinners and programming (**March 13th—April 10th**), we've got lots of fun activities planned! ☺

Our **High School Nights** will continue on **Sunday, April 28th** with a trip to the movies! More details to be released next month...

And finally, **The Big Event** for this month is our **Annual Chili Cook-Off!** We'll be gathering together as a community on **March 31st at 11:30am** (after the Jubilee service) to enjoy the different chili masterpieces, prepared by the hands of our BLC folk! If you would like to compete in the cook-off, there is a sign-up sheet in the Narthex; if not, please come and hang out and enjoy the food! Need more incentive? **Free-will donations** will go towards our **2019 YouthWorks** trip to **Marvell, AR!**

Our friends at **Thrivent** will be helping too—covering all incidental costs so ALL donations will go directly towards the trip.

SEEKING ADULT CHAPERONE & VEHICLE: We are looking for an adult **at/over the age of 25** to help shepherd our students going on the trip to Marvell, AR as well as a **reliable 7+ passenger vehicle** to make the trip! If you (or someone you know) may be able to help, please contact me as soon as possible for details. This is an extremely rewarding experience, so please consider it!

And lastly, **VBS 2019 Registration is now OPEN and FREE!** Check out the VBS'19 Facebook page or the Bethlehem website to get info and register online.

Thank you always for your continued support of our youth programs! ☺

Peace,

Alexis Steig

Director of Youth and Outreach
Bethlehem Lutheran Church, TC



The Christian Education Committee would like to THANK the congregation for their donations to our 'love/care' package project. Our Sunday Schoolers assembled 12 packages to be sent to our students, away at college. (No Military this year) We included a current Christian music CD, daily devotionals and prayers, school and personal items as well as LOTS of fun goodies, games and treats. These boxes remind our students that there is a church family at home that LOVES them and prays for their health, safety and success. We have no idea how impactful this knowledge can be in their life. Thrivent supported this project again this year. Their help is much appreciated, too. THANKS BLC!!!

PIANIST NEEDED: Christian Ed is looking for a piano player for our Sunday School Opening on the 1st and 3rd Sundays of each month (going through May). All easy songs!! You yourself know how beautiful the piano/organ music is in regular worship and we want to have that in our Sunday School Sanctuary time each week, too. Please prayerfully consider this ministry. Call Nancy Ammann 946-8433! Thank You!

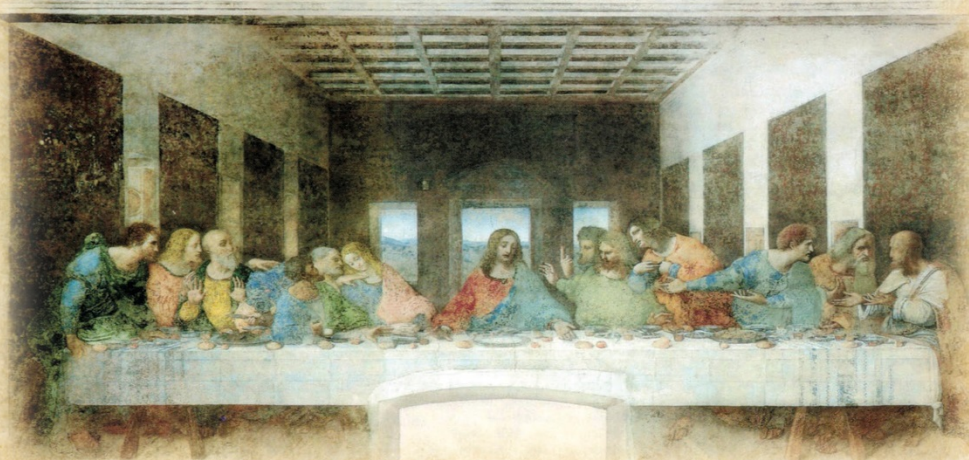
LENTEN WEDNESDAY NIGHTS: Following dinner at 5:30 the children will be able to come together to learn about prayer following the A.C.T.S. format: Adoration, Confession, Thanksgiving, Supplication. Prayer is so important in the Christian life and we want our children to know how important it is for them and different ways they can talk with the Lord. Please bring your children!

FIRST COMMUNION CLASSES: Suzanne Lehto will be teaching this class during the Lenten Wednesday nights. Look for further information in the bulletin. If anyone is interested in having their children take part in this class, please contact Suzanne for further information.

PALM SUNDAY: There will be regular Sunday School classes on Palm Sunday.

EASTER SUNDAY: There will be no regular Sunday School classes on Easter Sunday; however, we will have an 'event' during the Easter breakfast. Children may eat with their families and then take part in the 'event' which will highlight Holy Week. Please join us!

A BELOVED TRADITION BROUGHT TO YOU BY THE PARISHIONERS



COME AND EXPERIENCE WITH THE APOSTLES
AND BEGIN TO UNDERSTAND THE TRUE MEANING
OF THE LAST SUPPER

BASED ON LEONARDO DA VINCI'S PAINTING
THE
LIVING LAST SUPPER

- THREE OPPORTUNITIES -

FRIDAY APRIL 12 AT 7 PM

BETHLEHEM LUTHERAN CHURCH,
1050 PENINSULA DR, TRAVERSE CITY

SATURDAY APRIL 13 AT 7 PM

ST. ANN CATHOLIC CHURCH,
800 WEST 13TH, CADILLAC
SPONSORED BY FAITH AFIRE

SUNDAY APRIL 14 AT 3 PM

ST. PATRICK CATHOLIC CHURCH,
630 W SILVER LAKE ROAD, TRAVERSE CITY

FREE WILL OFFERING

PROCEEDS TO ASSIST ST. PATRICK ELEMENTARY FAITH FORMATION & SACRAMENT PREP

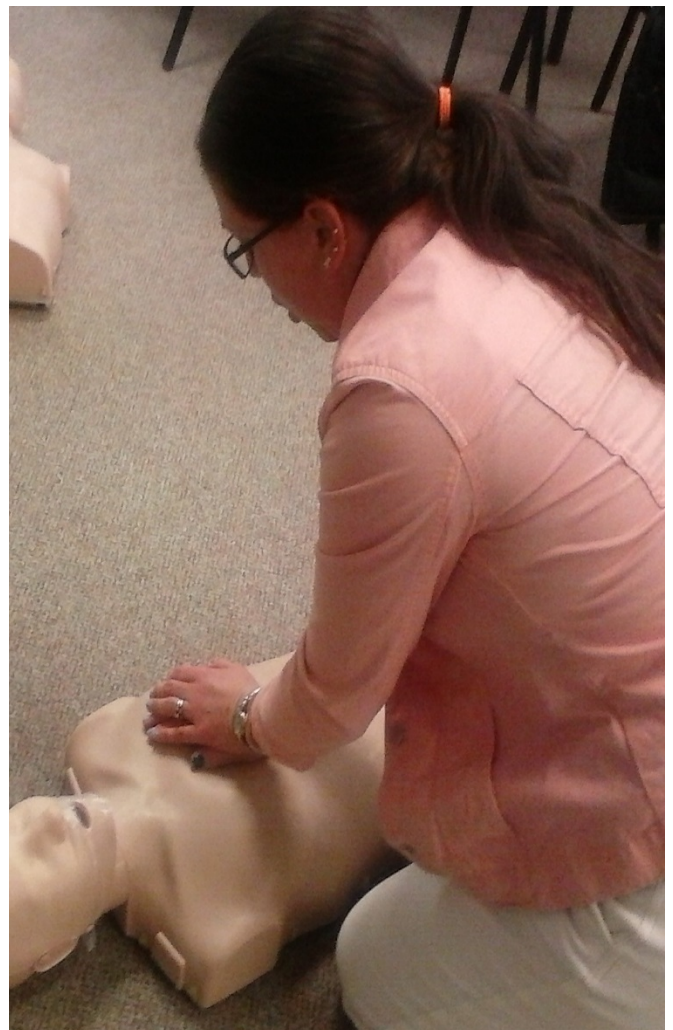


Health and Wellness is the ministry of the Christensen Small Group at Bethlehem Lutheran

Lutheran Church. We held a fund drive to purchase an AED (Automated External Defibrillator) in 2013. Since then we have purchased replacements pads as they expired and trained people in its use. On Sunday, January 20, seven more people earned a 2-yr certification in CPR and AED from the American Heart Association. Thank you to all who contributed.

If you are currently certified in CPR/AED, please give a copy to BJ Christensen to include in our Medical Emergency box here at Bethlehem. The box is next to the elevator and across from the entrance to the sanctuary and includes an AED, Blood Pressure Monitor, and First Aid Kit.

Our group also does the blood pressure screening each month, includes information on symptoms of heart attack and stroke, located in the bathrooms. We also try to include a healthy snack for the after-service coffee hour. This year we hope to include in the STAR important health information and its sources. Thank you to our volunteers and donors.



THRIVENT CHOICE DOLLARS: With 2019 now upon us, it is a good time to remind those members that utilize Thrivent Financial of their Choice Dollar program. Basically, eligible members can recommend where Thrivent distributes a portion of its charitable funding by directing Choice Dollars to Bethlehem Lutheran Church for our General Fund. Members become eligible for Thrivent Choice based on insurance premiums, contract values and Thrivent volunteer leadership. Several BLC members currently use this program to direct dollars to our church. Every dollar helps and is much appreciated. Feel free to contact our Treasurer—Dave Peppler or Bookkeeper—Phil Anderson if you have questions.

Qualified Charitable IRA Distributions *A way to make charitable donations tax-free and still use the standard deduction when filing taxes.* **Written by Jim Hutchison**

This year Margaret and I have elected to make our donations to the church and other charities using a provision the IRS calls a Qualified Charitable IRA Distribution. These withdrawals from my IRA are not subject to income tax. If you qualify, you may wish to investigate this form of giving.

To qualify

- You must be age 70 ½ or older.
- The donation must be transferred directly from a traditional IRA to the charity.

To set up our donation I use the web site of my IRA manager - in my case TIAA/CREF. I fill out a form listing the amount of my withdrawal with the name and address of the charitable origination to which they will directly send a check. I need to complete the form every time we make a donation. We plan to make quarterly donations to the church and annual donations to other charities.

This donation is not counted as part of the taxable income we receive from the IRA, hence we lower our tax bill, and we will be able to take advantage of the new higher standard deduction when we file our taxes. Even though the donation does not count as taxable income, it does count toward satisfying the Required Minimum Distribution (RMD).

Please note I am only describing my understanding of this type of IRA withdrawal. I am not qualified to offer tax advice. You should consult a tax advisor or IRA manager. A web search for *Qualified Charitable IRA Distributions* will generate useful information.

NEWS FLASH

In the 2019 budget, we created a couple small line items for new revenue/contributions to address our tight budget moving forward. One of those ideas is hosting an “Ad Page” on the back page of the STAR newsletter. We have volunteers who will help make this happen and would like to get the word out that if you or someone you know would like publicity for an organization or business, we will offer 1/16th of a page for \$25/month or 1/8 page for \$50/month or 1/4 page for \$80. A parishioner with graphic design experience has graciously offered members a free, one time layout for their ad (i.e. the equivalent of about 20 minutes of work to get set up) and another member has offered to lay out the page. Our bookkeeper, Phil Anderson will track and document the contributions/donations to help us move forward. Please contact Renae Wells [616-204-8900](tel:616-204-8900)/wellsrenae17411@gmail.com and/or Barbara Wright [231-735-3227](tel:231-735-3227)/mzbright9006@yahoo.com in the office if you are interested.

Your Stewardship Committee



DEADLINE FOR COUNCIL REPORTS IS WEDNESDAY, MARCH 13.

April 12th begins our Revamped Sew-Pieceful-Quilters

We are looking forward to having new and long-time quilters join us for an easy quilt project. If you can sew a straight seam, you're "in."

Our first project will be a simple table runner, 18 ½ x 49" called a "Ribbon Pole Table Runner. A sample of the finished runner is with the poster in the Gathering Space. The fabric sizes you will need are also there. You can choose any color or seasonal-themed fabric you wish.

Our May meeting will be on the 17th since the Sprign Fling is on the 10th. We will be making an easy tote bag. (If time allows that will be posed also with the fabric needs).

No need to buy all the quilting needs, like cutting boards, rotary cutter, rulers, etc. if you are a beginner. We'll share ours until you know you want to continue quilting. Just bring your sew machine and thread.

Would you like to try us out? You are most welcome to join us. If you have any questions, please call Suzanne Lehto (223-7187) or Tracey Moyer (276-6222). Hope to see you April 12 & May 17, 10am-1pm.

SEEKING MEMBERS: Please consider sharing a bit of your time, input, talent, and LOVE for BLC. The following groups could use your help: The Stewardship Committee (Chair Barbara Wright 231-735-3227), The Altar Guild (Barbara Oster 231-668-7038), and Y2A (needs parents of youth and children for future programming) (Alexis Steig—Church office).

COMMUNION PARTIES AT BAY RIDGE: Once a month, (currently on the second Wednesday at 2pm) Pastor Paul, John and Jan Stretlien, and occasionally other folks, go to Bay Ridge to offer a Communion Party to the residents. This happens at 2:00 pm and there are songs, communion, a short sermon and fellowship with coffee and cookies after. The congregation is welcome to attend! ☺

Reminder---All are welcome at our Council Meetings: Tuesday, March 19 at 6 pm.
There is a time slot for guests to speak at the beginning of the meeting,.

SAVE THE DATE: Celebrate the arrival of spring with food, fun, and fellowship.
Plan to join us at the Spring Fling for dinner on Friday May 10. More details to follow.

End of the year financial information is still being tabulated and received.
Look for updated information on this in your March Star.

FROM OUR CHURCH COUNCIL

SECRETARY'S HIGHLIGHTS FROM FEBRUARY 26, 2019 COUNCIL MEETING

Carl Lehto reported for Stewardship Committee, that we are having good success in getting advertisers for the STAR, Thrivent and Temperature Control are 2 examples.

Cindy Monroe was unanimously voted and approved to replace LoAnn Vande Leest as Chairperson of the Membership Committee, with a her term running until June of 2019.

Pastor Paul reported that we should know within a month's time frame if we will receive an Intern as our application has been submitted to the appropriate parties.

Dave Peppler, Treasurer, reported that we will have an approximate \$2,000 deficit to budget by the end of February. Dave did mention that this "snapshot" is only from 2 winter months.

Chuck Ardingo, Fellowship Chairperson, reported that we will be having a "Living Last Supper" play at Bethlehem on April, 12, 2019 at 7:00 p.m. at Friday. Please watch for more information on this exciting event.

Nancy Downer, Worship and Music, reported that we are very short on volunteers for the Worship Services at Bethlehem. Please give prayerful thought on becoming a Worship volunteer.

This month I have highlighted a few topics from our February Council Meeting. We have a lot more going on at each meeting and I will continue to try keep you informed of the highlights of each meeting. Our goal is to ensure Bethlehem continues to thrive and prosper and we appreciate any thoughts, comments and prayers you may have for Council.

Respectfully submitted,

Tim Fox
Council Secretary

Bethlehem's Safe Harbor Ministry for 2019

A cadre of enthusiastic volunteers, charged with Christ's message to love and serve our neighbors, supported our ministry to persons experiencing homelessness during our period of Safe Harbor service, February 9-12. An average of 82 men and women each night were given a hot evening meal, a safe place to sleep, and breakfast at the Safe Harbor Emergency Housing Shelter on Wellington Street. About 60 BLC volunteers cooked, served, cleaned, supervised, and purchased groceries in support of our mission. Through our gift of service we acted as the hands, feet, and soul of Jesus. And there is a return gift to us: It is the gift of recognition that the Safe Harbor guests were our neighbors worthy of support, encouragement, and love, rather than persons to be avoided and rendered invisible. To all our volunteers we say thank you!

Financial grants from the BLC Mission Endowment Fund and Thrivent Financial for food purchases, and the donation of snacks and breakfast items by BLC members were essential components of this ministry.

This was the tenth year of our BLC Safe Harbor ministry and was the second year of service at the new shelter building. For five prior years we housed guests at our church where they slept on the floor in Fellowship Hall, and for three years earlier we volunteered to support other congregations that housed guests in their own church building.

A measure of the need for this ministry is the fact that in 2017, the last year we housed guests in our building, we averaged 35 guests per night. This year on Monday night there were 90 guests, the maximum number allowed by the shelter permit. Since the building has 82 beds some guests slept on mats on the floor.



WOMEN OF BETHLEHEM - MARCH 2019

AN IRISH PRAYER

May God give you...

For every storm, a rainbow;
For every tear, a smile;
For every care, a promise;
And a blessing in each trial.
For every problem life sends
A faithful friend to share;
For every sigh, a sweet song
And an answer for each prayer.

CHURCH WOMEN UNITED is hosting it's annual Lenten luncheon series
at the Presbyterian Church on Westminster on the following Thursdays
during Lent: March 7th, 14th, 21st & 28th and April 4th & 11th.
For further information, contact Betty Coons 941-8912.

THE SPRING FLING IS COMING!

It's time to set aside the date of May 11th to attend the Spring Fling.
Please watch for further details

Gather's Bible Study from the Gospel of John continues this month with
"Friends for Life in Christ". See how the lives of a woman who committed
adultery, a blind man and three friends of Jesus are transformed by faith.



Evangelical Lutheran Church in America
God's work. Our hands.

ELCA GLOBAL LINKS

Stay informed. Be inspired. Get involved.

**Readers of the *Bethlehem Star* are encouraged to
learn about Lutherans and other Christians around the world
-- their ministry and their work --**

New ELCA Podcast on ELCA Missionaries and Global Mission

In the ELCA there is no mission “to,” only mission “with” and “among” as its missionaries walk together with those they serve. In this episode of the Three Sides podcast, ELCA missionaries and Global Mission staff talk about what “accompaniment” means: walking together and sharing God’s love in communities throughout the world. The following link will connect your computer or MP3 to the fascinating story of work being done in Cairo, Egypt. Begin with Rev. Kirsten Fryer the ongoing ministry:

<https://www.livinglutheran.org/podcast/walking-together/>

Liberia’s “Thursdays in Black” Campaign Amplifies Efforts to End Gender-based Violence

The launch of a “Thursdays in Black” campaign by the Lutheran Church in Liberia (LCL) recently served as a public call to action against violence directed at women and girls and an acknowledgment that, as the Rev. Janice Fajue Gonoe points out, such abuse “is not always physical. It can be verbal, psychological, economic. It can involve the environment.”

Watch and listen to the story:

<https://www.lutheranworld.org/news/liberias-thursdays-black-campaign-amplifies-efforts-end-gender-based-violence>

Hospital in Naples Marks Half Century of “Open Arms”

The Evangelical Lutheran Church in Italy (CELI), a member of the Lutheran World Federation, has been celebrating the 50th anniversary of a hospital in Naples that provides high-quality care for some of the city’s most impoverished inhabitants. This inspiring ministry of the small, 7,000 member CELI church in Italy can be found at:

<https://www.lutheranworld.org/news/hospital-naples-marks-half-century-open-arms>

Young Adults in Global Mission in the Heart of the Holy Land

The Revs. Colin and Jeni Grangaard arrived in Jerusalem in June 2015 to serve as country coordinators for Young Adults in Global Mission (YAGM). Over the past few years they have journeyed alongside YAGM program participants and their hosts in the often deeply challenging yet joy-filled environment of the Holy Land. Walk with Jeni and Colin as they reflect upon this ministry of accompaniment in the second chapter of our three-part video series on ELCA missionaries in the Holy Land. Learn more about the YAGM program by visiting: <https://www.ELCA.org/YAGM>.



Has taken its meetings into the Community. We now meet on the 4th Tuesday at 5:30 at the Cottage Café (During the summer only back at church. You can choose a meal or just join in the discussion. ALL ARE WELCOME & bring a friend. On February 26, we will discuss "A Gentleman in Moscow" By Towles. On March 26, we will discuss "The Storied Life of A.J.Fikrey" by Gabrielle Zevin.

XYZ

Our next XYZ pot luck lunch will be Thursday, March 21 at noon. Our program will be presented by computer expert Mad Mike. All are welcome. Questions and/or comments can be directed to Butch or Jan at 231-271-3802 or etsaisanen@centurytel.net.

OLESON'S RECEIPTS: Please continue to bring in your Oleson's cash register receipts. We recently received a check for \$253.70. Thanks to all, especially Oleson's

Finger-Food Fellowship!

Any person or group can sign up to bring Cookies or a Finger Food (requiring only a napkin) to serve on Sunday. One tray needs to be ready after both Sunday Services with someone to clean up after late service. PLEASE WRITE DOWN YOUR DATE—there is no reminder system for this. A wonderful ministry for members, but also to welcome visitors.



SHOP AT FAMILY FARE AND HELP RAISE MONEY FOR QUILTS!!

Shop at Family Fare, 905 E. 8th Street here in Traverse City (or at any Family Fare in the area) and help raise money for quilts!

*To warm others with more than a prayers,
save register receipts when you shop Family Fare!
Lutheran World Relief quilters need help from you.
Bring Family Fare receipts to us that you could do.
This helps raise money for the supplies it will take...
for fabric, thread, and shipping necessary for the quilts we make!*

Questions? Please call Betty Rutila at 231-947-1013



WELCOME TO OUR NEW PAGE

“We Care for God’s Creation”



This page will be a monthly feature page in the Star dedicated to taking care of our environment and appreciating the bounty that God has given us. We are going to be looking for your contributions. Help us highlight our gratitude to Him from whom flows all blessings. Please contact Judy Strickland with your ideas or the church office.

CREATION PAGE CONTRIBUTIONS

FROM JUDY STRICKLAND: We need your help for the April edition.

Please send an email to the church office, admin@bethlehemtc.org ATT: Renae. In you email please let us know where in nature God speaks to you through his creation. “Being in Torch Lake on a beautiful summer day would be one for me”, says Judy. “Our national parks are another place, at this time of year through technology, see the National Park Foundation.”

FROM THE MONROE SMALL GROUP: Our small group has purchased a second recycling bin for the kitchen/fellowship hall. They are in the process of making folks aware of all the items which can be recycled after large congregational meals. Don’t throw that placemat or napkin away unless it is really dirty and wet.

SPECIAL RECOGNITION: We would like to recognize Carl Tacke as our #1 recycler!!!! He has been collecting all the recycling around the building and takes our bin out for pickup.



The Worship & Music Committee has restored the custom of honoring new members of the family of God with a rose at the Altar. Those who wish to celebrate their new child or grandchild can contact the church office. The cost is \$10.00 to be submitted to the church office, or labeled as such and placed in the collection plate. The rose and vase can be taken by the family after the 11:00 service on Sunday.

Musicality

Another way to support your Bethlehem Music Department is to join one of the music groups. Depending on the one you join, you could be a part of services every 2 months, once a month, once every three weeks, or about every other week. They all have different schedules. What fits you best?

Your choices are steel pans, bells, Worship Team, and choir. They rehearse once a week with trained directors and really build up quite a comradery. It's fun. Think about it.



Did you know Love In the Name of Christ has a Medical Equipment Loan Ministry? If you, a friend or a family members needs a wheelchair, walker, cane, bathroom equipment or more, we can help! We have closet locations at Christ the King in Acme, Grace Episcopal mid-town, St. Patrick in the Grawn area and at the Love INC offices on East Front Street. **Call 941-5683** to speak with us about a loan or a donation of equipment. Thanks to our partnership you can have love and care at home!

Habitat for Humanity

Habitat for Humanity is always looking for volunteers:

1. Skilled/Unskilled volunteers to serve as site coaches leading and teaching groups of volunteers in finish carpentry. No experience necessary.
 2. Committee Members. Time commitment is about three hours a month. Committees needing members are Faith Relations, Family Selection and Events.
 3. Re-Store volunteers / Donation drives / Pickup and Delivery
 4. Lunch volunteers to feed construction site crews.
 5. Deconstruction teams to salvage materials to be sold at the Re-Sale Store.
- If you're interested in helping out, please call Michelle Reichert at 231-941-4663

Health Concerns*



*Richard Fernholz, Nancy Smith, Hazel Lautner,
Margie Whitney, Jo Hasse, Mary Gordon, Ruth Boerman,
Tom Miller, Ellie & Carl Tacke, Vern and Bev Attwood, Cheryl Clark,
Arline & Roy Stowe, Kate Holtfreter, Joyce Rombouts, Priscilla Thompson,
Marlene Baesch, Alvin Kober, Bill Gourdie, Dee Springer, Bill Gibson, Lynn
Hoyt, Jacque Rossfeld, Jan Waisanen, Pastor Fred Overdier, & Maggie
Pearce*

Grand Traverse Pavilions: Vern & Bev Attwood, Bill Gourdie, Tom Miller

Homebound: Hazel Lautner, Ruth Boerman

Traverse Manor: Margie Whitney

French Manor LaFranier: Jo Hasse, Joyce Rombouts, Roy & Arline Stowe

French Manor: Mary Gordon

Boardman Lake Glens: Inge Thomas, Bill & Dee Springer

Hospital Visits: Please let the church office know if you are going into the hospital for a scheduled procedure or an emergency so Pastor Paul can visit you.



BLC's PRAYER CHAIN is always seeking partners in prayer.

More volunteers are needed for this crucial ministry.

**For more information or to set the Prayer Chain in motion,
call Jan Stretlien @ 947-3265 or email jstretlien@gmail.net**

*If you would like your name, or the name of a loved one, to appear on this list which appears here and in the weekly bulletin, please call the church office at 947-9880.

Are you checking for the latest BLC updates at: www.bethlehemtc.org?

You saw Norm and others take the photos...be sure you see them at www.bethlehemtc.org!

Good News...and great news...at www.bethlehemtc.org...

OPTIONS FOR OUTSIDE ACTIVITIES

*****BEREAVEMENT SUPPORT:** Munson Hospice Bereavement Support Groups and Programs are available to the general public free of charge. Many groups and dates are available. (See flier on outside of Office) There is a workshop starting January 16 in Traverse City—"Understanding Your Grief" which meets for 10 weeks.

****FATHER FRED:** Wednesday morning volunteers now needed. The typical shift is 10-2pm and you will receive an orientation and work with another volunteer that will help train you. Contact: Elaine Keaton at 231-947-2055 Ext: 118 or ekeaton@fatherfred.org

****GRAND TRAVERSE BAY AREA STROKE CLUB:** Provides Monthly opportunities. Next event: Wednesday, March 13. Program: "Who Will Speak for You? Putting your Medical Wishes in Writing" Most meetings are held on the 2nd Wednesday of each month from 2:30-4:30 at the Presbyterian Church located on Westminster Road. Contact Melinda Hollands, at 935-6380.

****CENTRAL UNITED METHODIST CHURCH:** Volunteers to feed the local homeless and financially insecure, a free meal 7 days a week....any level of commitment is welcome. To volunteer, contact Rev. Jane Lippert at janerobertalippert@gmail.com or 231-946-5191

BETHANY CHRISTIAN SERVICES: Has an urgent need for foster parents for their Refugee and Immigrant Youth Program. Informational sessions with no Commitment Monthly: Next session Wednesday, March 21---6-8pm. MUST RSVP. For more info: 231-995-0870. Meeting held at 1055 Carriage Hill Dr.

EMPLOYMENT OPPORTUNITY: Love Thy Neighbor Grand Traverse Region (formerly Love INC) is looking for an Executive Director (25 hr/wk). We have been a partner in the community and with local churches for 30 years and are looking for the next leader for our local ministry work. We are looking for a goal oriented, independent worker with a commitment to building relationships in the community and developing program supports. Experience in grant writing and fundraising preferred. A commitment to working to serve our neighbors in need as well as promoting the gospel message of grace and forgiveness as a means of change are the underpinnings of this job. Submit resumes to lovethyneighborgt.org.



BLC Contacts

PLEASE NOTE SEVERAL ADDRESS UPDATES

Church Office

Pastor Paul Busekist	paul.busekist@bethlehemtc.org
Admin. Asst. Sharon Weller	admin@bethlehemtc.org
Admin. Aide Renae Wells	admin@bethlehemtc.org
Bookkeeper, Phil Anderson	bookkeeper@bethlehemtc.org
Sharon Weller, Music Director	sharon.weller@bethlehemtc.org
Alexis Steig, Youth & Outreach Director	alexis.steig@bethlehemtc.org
Website	www.bethlehemtc.org

Church Council

Jim Parkinson, President	president.council@bethlehemtc.org
Chuck Ardingo, Vice President	vicepresident.council@bethlehemtc.org
Tim Fox, Secretary	secretary.council@bethlehemtc.org
Dave Peppler, Treasurer	treasurer.council@bethlehemtc.org
Shelly McAllister, Financial Sec.	Secretary.council@bethlehemtc.org
Phil Anderson, Bethlehem Vision	Bookkeeper@bethlehemtc.org
Jan Stretlien, Christian Care Giving	christiancaregiving.committee@bethlehemtc.org
Barbara Graf, Christian Ed.	christianeducation@bethlehemtc.org
Evangelism	evangelism@bethlehemtc.org
Chuck Ardingo, Fellowship	fellowship.committee@bethlehemtc.org
Membership	membershipevangelism.committee@bethlehemtc.org
Chuck Ardingo, Property	property.committee@bethlehemtc.org
Barbara Wright, Stewardship	stewardship.committee@bethlehemtc.org
Nancy Downer, Worship and Music	worship.committee@bethlehemtc.org
Barbara Graf, Youth/Y2A	youth.committee@bethlehemtc.org

If you have an interest in serving on any of the above Committees,
Please contact the Committee Chairperson(s).

Sun	Mon	Tue	Wed	Thu	Fri	Sat
24	25	26	27	28	1	2
3	4	5	6	7	8	9
8:30am - Worship Service 9:45am - Membership & 9:45am - Sunday School 9:45am - WELCA Board 11am - Modern Worship - S 12:30pm - Wor. & Mus. 1:15pm - Confirmation	10am - AIAnon-B 10am - Alanon-LR3 10am - Staff Meeting 3pm - Lessons/Weller 4pm - Drive My Way 6:15pm - Apprentice 6:30pm - Gamblers	9am - LWR Quilting 9am - Prayer Shawl 9am - Property Work Group 3pm - Lessons/Warner 4pm - Drive My Way 4:30pm - AAUW 6pm - Christian Ed Mtg.	3pm - Lessons/Weller 4pm - Drive My Way 6pm - Worship Team	3pm - Lessons/Warner 4pm - Drive My Way 5:30pm - ACOA (LR) 6pm - Bell Choir Rehearsal 7pm - Choir Rehearsal	10am - AIAnon-B 10am - Alanon-LR3 2:30pm - Front Street Jazz 6pm - Faith and Family	5pm - Celebrate! Worship 5pm - Worship-S
10	11	12	13	14	15	16
8:30am - Worship Service 9:45am - Sunday School 11am - Modern Worship - S 6pm - Grandparents	10am - AIAnon-B 10am - Alanon-LR3 10am - Piano Tuning - FH 10am - Staff Meeting 3pm - Lessons/Weller 4pm - Drive My Way 6pm - Sew Peaceful Quilters	9am - LWR Quilting 9am - Prayer Shawl 9am - Property Work Group 10am - Finance-CR 12pm - Sarah Circle 3pm - Executive Committee 3pm - Lessons/Warner	2pm - Communion Party-BR 3pm - Lessons/Weller 4pm - Drive My Way 6pm - Worship Team	9am - Baby Pantry-FH 1pm - Rebecca/Ann Circle 3pm - Lessons/Warner 4pm - Drive My Way 5:30pm - ACOA (LR) 6pm - Bell Choir Rehearsal 7pm - Choir Rehearsal	10am - AIAnon-B 10am - Alanon-LR3 2:30pm - Front Street Jazz 4pm - Drive My Way	1pm - Drive My Way 5pm - Worship-S
17	18	19	20	21	22	23
8:30am - Worship Service 9:45am - Sunday School 11am - Christensen SG 11am - Modern Worship - S 12:30pm - Monroe SG 1pm - Drive My Way 1:15pm - Confirmation	10am - AIAnon-B 10am - Alanon-LR3 10am - Staff Meeting 3pm - Lessons/Weller 3pm - Oster SG 4pm - Drive My Way 6:15pm - Apprentice	9am - LWR Quilting 9am - Prayer Shawl 9am - Property Work Group 3pm - Lessons/Warner 4pm - Drive My Way 6pm - Council Meeting 7pm - Lautner SG @ the	3pm - Lessons/Weller 4pm - Drive My Way 6pm - Worship Team	12pm - XYZ 3pm - Lessons/Warner 4pm - Drive My Way 5:30pm - ACOA (LR) 6pm - Bell Choir Rehearsal 7pm - Choir Rehearsal	CHARGE 10am - AIAnon-B 10am - Alanon-LR3 2:30pm - Front Street Jazz	5pm - Worship-S
24	25	26	27	28	29	30
CHARGE 8:30am - Worship Service 9:45am - Sunday School 11am - Modern Worship - S 1pm - Apprentice Grad 6pm - Grandparents	10am - AIAnon-B 10am - Alanon-LR3 10am - Staff Meeting 3pm - Lessons/Weller 6:30pm - Gamblers	9am - LWR Quilting 9am - Prayer Shawl 9am - Property Work Group 3pm - Lessons/Warner 5:30pm - Book/Supper Club 5:30pm - Newcomers	1pm - Johnson SG (Offsite) 3pm - Lessons/Weller 6pm - Worship Team	9am - Baby Pantry-FH 1pm - Lehto SG 3pm - Lessons/Warner 5:30pm - ACOA (LR) 6pm - Bell Choir Rehearsal 7pm - Choir Rehearsal	NO BLUES 10am - AIAnon-B 10am - Alanon-LR3 2:30pm - Front Street Jazz	5pm - Worship-S
31	1	2	3	4	5	6
8:30am - Worship Service 9:45am - Sunday School 11am - Modern Worship - S 11:30am - CHILI COOKOFF						

Coldwell Banker Schmidt Realtors
The Stireman Team

Barbara Wright
Licensed Associate
402 E. Front Street
Traverse City, MI 49686
Mobile: (231) 735-3227
mzbright9006@yahoo.com
www.stireman.com

THRIVENT FINANCIAL



Jeremy W. Jackson, CFP®, ChFC®, RIC
Financial Associate
3116 Logan Valley Rd
Traverse City, MI 49684
231-486-6021
CA Insurance OJ07681

Connecting faith & finances for good.®

Certified Financial Planner Board of Standards Inc. owns the certification marks CFP® and CERTIFIED FINANCIAL PLANNER™ in the U.S. 27193 R6-16



1029 Carver Street
Traverse City, MI 49686
(231) 947-7670
Fax (231) 947-7199
www.deweesehardware.com

Covell Funeral Homes

Our Locations:
232 E. State Street
Traverse City, MI 49684
200 N. Brownson Avenue
Kingsley, MI 49649
312 Pine Street
Elk Rapids, MI 49629
www.CovellFuneralHomes.com

Phone: (231) 946-6515
Fax: (231) 946-1099




1623 Northern Star Drive • Traverse City, MI 49696
Control Systems • Air Conditioning • Heating
Commercial • Industrial
Phone (231) 922-1862

We've Moved!



We can help with Cemetery Burial, Natural Burial in the green section of the cemetery, Body Donation, and Cremation.


Cost friendly,
Locally owned and
not franchised

Be an informed consumer... Call to see why your friends and neighbors choose Life Story

231-941-9034

**400 W. Hammond Rd,
Traverse City, MI**
East of Garfield and next to
Traversefield Industrial Park
LeVon M. Seavolt, Owner/Manager

Life Story FUNERAL HOME
Traverse City



REYNOLDS JONKHOFF
Funeral Home & Cremation Services

305 Sixth St. 947-6347
www.reynolds-jonkhoff.com

For six generations... the Jonkhoff family and caring staff are the ones you can trust and depend on... today and tomorrow.

TOP 10 REASONS TO EAT AT



- 1 Breakfast, lunch, and dinner – from 7am-10pm Monday thru Sunday
- 2 Awesome burgers and sandwiches, all of which come with endless fries!
- 3 Locally owned and family operated
- 4 We offer a contemporary twist on dishes we all know and love – comfort food with a modern flare!
- 5 Friendly staff that accommodates any special requests!
- 6 Crispy and delicious all-you-can-eat perch every day of the week
- 7 Convenient location away from downtown traffic provides ample free parking
- 8 Large groups and gatherings handled with ease
- 9 Yummy soups homemade daily
- 10 Made-from-scratch desserts and freshly brewed coffee

OPEN DAILY 7am-10pm • 472 Munson Ave Traverse City, MI 49686
facebook.com/thecottageetc • 231-947-9261

Monthly donation: 1/16 page \$25; 1/8 \$50; 1/4 \$80. Pay for a year in full---get 1 Month Free
Questions??? Please contact Barbara Wright 231-735-3227 or mzbright9006@yahoo.com or Renae Wells at 616-204-8900 or wellsrenae17411@gmail.com. Make checks payable to BLC...put Renae Wells name on envelope.