



Bethlehem
LUTHERAN CHURCH

Traverse City, MI 49686
(231) 947-9880

JUNE 2018



Website: www.bethlehemtc.org
Email: bethlehem@bethlehemtc.org

Building Hours:

Monday – Thursday, 9am to 3pm

Office Hours

Monday – Thursday, 9am to 3pm

Worship Times:

Saturday: 5 pm Celebrate! Worship
Sunday: 8:45 am Traditional Worship
9:45 am Education Hour
11 am Modern Worship

Communion at all services

Follow the STAR to Bethlehem!

Our Mission...

“We journey with God, to serve with love”

Our Vision...

“As a community of believers journeying with God together, we at Bethlehem are called to serve with love by growing a premier youth ministry; enlivening Christian discipleship through lifelong learning, care, and spiritual formation; fostering a vibrant and inspiring worship experience; utilizing our natural setting and location for faithful creation care and outdoor ministry; and opening our doors always to be a “campus at the crossroads” for the mission and ministry of Jesus Christ.”



“So if anyone is in Christ, there is a new creation: everything old has passed away; see, everything has become new!”

- 2 Corinthians 5:17

Years ago when sitting at a table of pastors and call committee chairs, I remember defending this statement from 2nd Corinthians: “In Christ, there is a new creation.” I was fresh out of seminary, ready for my first call, and charged with what I might call (for any of you “runner” types) the “second wind creation” - which is, of course, the resurrection and the gospel.

Then what is the “first wind,” you may ask? It is the beginning, the Creation of all things (in Genesis)... the universe, the earth, and all that it contains. Our first wind is the very breath of life we start with. The second wind, however, is why we Christian types are in this wonderful race called life, as the apostle Paul would say. Jesus gives us this new creation (via baptism, communion together, and the grace we share) so that we too might be re-created each day, in ways too numerous to count.

How is Christ re-creating you today?

Traditionally we think of summer as a time of rest and renewal. But it is also the time when many of us reflect and look forward to what we would like to embark upon in the coming fall. This summer, as we do just that at Bethlehem, I encourage you to ask yourself these two simple questions:

What new thing is God creating in me (ahem, you ☺) this coming year?

What new thing might the Spirit be creating in Bethlehem...through me?

...We’d love to know, if you’d like to share. Have a wonderful June and blessings on the beginning of your summer.

In peace,
Pr. Paul

President's Corner

Each one should use whatever gift he has received to serve others, faithfully administering God's grace in its various forms—1 Peter 4:10

Thank you! It is time to say "Goodbye and Thank you", to those who have served and are going off Church Council this month. Dianne Blair has been a rock in her support for Christian Education. Her insights and voice have been consistent and respected by the council for many years. We will miss her strength and character. Jodi Kelly has always been The Voice of the Youth Program and its significance to Bethlehem. She has taken on many challenges in this position and brought great insight and experience to council. The youth of Bethlehem could not ask for a stronger advocate. Carl Lehto has been the face of the Property Committee. Whatever needed to get done around the building or grounds, Carl was The Man. We have been blessed with his "can do – will do" attitude. His, will be big shoes to fill. He also brought many years of institutional knowledge to council that earned him great respect. Barbara Oster is also leaving council. As chair of the Worship and Music Committee, she was a tireless advocate for the worship experience that we all love and appreciate. She also coordinated the many volunteers that make the services possible. She always displayed a positive attitude and at the same time fought hard for her committee. A big thanks to the council members that are staying on for another year. Each of them is dedicated to making Bethlehem Lutheran Church the best possible place to worship and grow in faith. This church family is a big tent where all can feel welcome, wanted, and supported. As the new council members are elected and take on new responsibilities, please pray for them. We endeavor to do God's work with our hands.

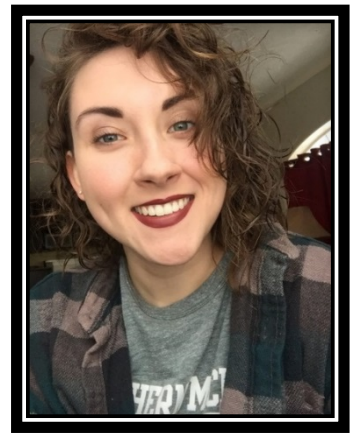
I also want to thank the Executive Committee, Pastor Paul, Dave Peppler, Jim Parkinson and Tim Fox. This team has been on the front lines of moving forward the projects and priorities of the church and Church Council. Each of these individuals deserves kudos and thanks for their work and dedication.

I too am ending my second year as your Council President. I have appreciated your support of Church Council and am proud of our accomplishments. The Council has worked well together as we have tackled many problems and challenges. To be sure it is not about me, but about what we have accomplished as a team. I will be continuing on as a member of council in a new and exciting role. The church needs to revive its long range planning process and I will be leading that effort. At this point, I am a committee of one. That is not a sustainable situation so I am seeking a group of folks that want to be involved. If that kind of challenge interests you, let's talk.

Summer is here and I hope that wherever the road ahead takes you, you experience the blessing of God's creation and that you can do something to bless others as you have been richly blessed. I hope to see you around our second home, Bethlehem Lutheran Church!

Phil Anderson

FROM THE DESK OF ALEXIS DIRECTOR OF YOUTH AND OUTREACH



Well folks, we've wrapped up most of our youth programming for the season, but we've got a LOT Going on in the summer months as well! Some **program recaps** for you, first...

THEO, our 'pilot' Young Adult program, had a great first run, with monthly meetings January through May reaching an average of 6-7 attendees! We are looking forward to starting back up in the fall with an improved structure. We may even have an event over the summer!

Our other pilot program, *"The 30-Minute Journey: Jesus and TED"*, geared toward our older youth and adults, was a success as well! We enjoys some insightful speakers and conversation and hope to continue the pattern this fall, whether in the same format or a revised version.

Confirmation classes have concluded for the semester, and we'll start up again in the fall! Taylor Brown was confirmed at Feast of Victory Lutheran Church in Acme on May 20th with all of her FOV peers; it was a beautiful celebration of faith and friendship! We are looking forward to having 2 confirmands in the fall, and we would love more! ☺

BLUES wrapped up on May 25th with a family hike on the Vasa trail! Lots of fun was had and we enjoyed a lovely spaghetti dinner afterward (thanks Meghan and Sharon!) We're looking forward to testing out some new activities in the fall...thanks to all for an awesome year!

Now, **what's next?**

The ELCA National Youth Gathering is rapidly approaching! We'll be leaving for Houston on June 26th, which is in only a few weeks! Please be praying for our students (Ally, Courtney & Austin) along with our partners from Zion (Cadillac) and Ascension (Saginaw) as we embark on this awesome journey! If you would like to help out, we have our annual **Parking Lot Fundraiser** during Cherry Fest (which needs volunteers) or you can contact me directly to contribute in other ways. ☺

For our elementary and middle school youth, **Summer Camp at Stony Lake** is Week 5! We have 2 confirmation students attending and one Challenger camper! There may still be slots open, so call Living Waters SOON if you'd like to register your child!

And rounding out the summer is our **VBS'18 program!** For the first time in several years, we are going to do an in-house vacation bible school, which is a big task to take on, but the pay-off is worth it! And we have already surpassed last summer's attendance by almost DOUBLE! How exciting is that? Keep your eyes peeled for VBS Planning Party dates and more (on Facebook, screen-announcements, etc.....)

Finally, thank you all for your generous contributions of time, finances and other resources... we couldn't do any of this without you! ☺

Peace and Blessings,

Alexis Steig

Director of Youth and Outreach

Christian Education Highlights

June 2018



May has come to a close and we are heading into our summer season, also known as Road Construction Season, in Traverse City. Not only are the roads going to be covered by orange cones, but also filled with out of towners. Summer is a busy season around here. Cherry Festival brings in many people as does Film Festival and all the other festivals in Traverse City and the surrounding areas. As anyone who travels the crammed roads knows, traffic can provoke many headaches! *1 John 4:19 reminds us, "We love because he first loved us."* Even when we have the worst of headaches from all the bustle we must remember that because he first loved us we must love one another.

BLUES met for the last time till the fall on May 25th. Our BLUES kids and their families came together for a hike on the Vasa trail to celebrate God's creation and reflect on the time they have spent together.

Also, Sunday school wrapped up for the school year on May 20th by dedicating the Weeping Cherry tree we planted in the beginning of the school year. "The Well" began on **June 3rd** and will be held every Sunday at the **11 o'clock service** throughout the summer.

If you haven't already, mark your calendars for the week of VBS, **July 30th through August 3rd**. Doors will open at 8:30 am but opening worship will begin at 9am. Early departure will begin each day at 12:30pm and final closing will be at 1pm. Free registration ended on June 1st, however registration is still open. There is a \$5 fee per family. If there are any questions or concerns regarding registration please contact Alexis or myself.

Peace and blessings this summer season,

Meghan Denton

Christian Education Coordinator

Bethlehem Lutheran Church

PHOTO MAKEUP DATE: Our make-up day is Wednesday, June 13 from 4pm-9pm. Please sign up by using this link: <https://booknow-lifetouch.appointment-plus.com/yc7n2e2y/>

Parking Lot Fundraiser 2018: Everyone with children and youth at BLC has four terrific opportunities to help out this year during Cherry Festival, the best being the Blue Angels on June 30 and July 1. Signup sheets are on the table in the Gathering Space. Please sign up soon so we know who is on our “team.” Please know that the Council adopted a set of guidelines for fundraisers. They are posted in the Gathering Space. Please take a few minutes to go over them.

HUGE THANK YOU: The Stewardship Committee would like to thank everyone who so generously gave additional gifts in response to Jim Hutchison’s wonderful “Bridge the Gap” Temple talks. We are now at \$5283 of our \$6000 goal. ONLY \$800 to go!!! Thank you to all you Joyful Givers.

“We Care for God’s Creation”

Stewardship would like to make this feature a monthly part of the STAR to highlight ways that groups and individuals in the congregation are demonstrating their care for God’s creation. To make this feature a success we need your contributions. Send articles or photos accompanied by a brief description of what you are doing to Sharon/Renae. Hopefully this will help us appreciate the contributions of others and encourage us to find ways we can care for God’s creation.

Prayer shared by Cindy Monroe: Almighty God, our Rock and our Salvation, we beg you to pour out your Holy Spirit upon our fractured Nation. Heal the divisions that separate us, and remove all obstacles to authentic unity. May you guide this great country of ours and lead our citizen to embrace one another as neighbors and fellow countrymen, created in your own image and likeness. Give us a fresh opportunity for renewal and true solidarity for the common good of our Homeland. May we return to our true identity as a people of faith and charity. Help us to always remain One Nation, Under God, Indivisible, with Liberty and Justice for all. Amen



Treasurer Update

April numbers show we had a very good month, and the same for YTD. April cash flow was positive by \$12,742. We had budgeted April to have a positive cash flow by \$7,169 which means we are ahead \$5,573 from where we thought we would be for the month. The good April numbers also helped us have a YTD positive cash flow of \$5,142.

A key contributor for this good news is \$5,280 we received in *Close the Budget Gap* funds. You may recall our 2018 budget projected a deficit of \$6,539. The *Close the Budget Gap* initiative was to proactively address the shortage. Receipt of these funds makes our first four months look very good.

One area of concern is the level of weekly / quarterly giving. We are running about 3% lower than what we budgeted. The Budget Gap initiative has helped mask the impact of this shortfall. It is important we sustain a strong level of giving throughout the year to meet our goal of a balanced budget.

There is good news on the expense front...so far anyway. After taking into account expenses that have been incurred but have not yet hit the books, we are running about \$4,000 under budget. The lower expenses are primarily in repairs and maintenance which can turn into real expense the moment something breaks or a repair is needed.

Net net...a good start to the year, with a caution on the need to correct weaker giving than hoped. To keep ourselves fiscally fit we need to stay vigilant with expense and generous with our contributions.

FROM: Shelly McAllister, Financial Secretary
RE: Semi-Annual Congregational Meeting Report
DATE: April 26, 2018

Our current number of counters is 31 including substitutes. They are eager to perform this essential function for our church efficiently and accurately. As always their assistance is greatly appreciated. Thank you all so much for your time and efforts. We welcome anyone interested in assisting with counting the offering to contact Shelly McAllister at 631-4346 or smcallister3@hotmail.com.

Council Meeting of May 15, 2018

The one piece of outstanding news that was a blessing to hear from the last Council meeting was that we, as a Bethlehem Family, have greatly closed the 2018 Budget Gap of \$6,000 to an amount in the \$800 range. I know you may already have heard this news from a Council Member, a fellow member or read the news in the bulletin at Church, but I think it is worth repeating. The work of our Stewardship Committee, Chairperson Barbara Wright and Jim Hutchison did a marvelous job with the Budget Gap Fund. The wonderful Temple Talks by Jim proved to be beneficial as the Budget Gap Fund grew in contributions of \$2,000 to \$5,200 this past month. Thanks to all of the Bethlehem Family! As our Mission Statement says, "We journey with God, to serve with love."

Tim Fox, Council Secretary



WOMEN OF BETHLEHEM - June 2018

LET US PRAY

Jesus says: "Don't think of prayer as a chore. Instead view it as communicating with the One you adore. Delight yourself in Me; this will draw you irresistibly into communion with Me. Often the easiest way to start talking with Me is to thank Me for being your Savior, Redeemer and Friend. You can also give thanks for things that are happening in your life, your family, your church, and beyond. These grateful prayers connect you with Me and ease the way into other prayers. You can talk freely with Me since I know everything about you and your circumstances.

Trust Me enough to pour out your heart to Me, for I am your Refuge.

(Taken from Jesus Always, written by Sarah Young)

June Bible Study: "Let Us Pray", written by Anna Madsen. This study will continue throughout the summer. In session one, we will talk about the paradoxes of prayer. In prayer, we call upon a God who may respond in unexpected ways. If you would like to join one of the circles for this study, please contact Nancy

Ammann

UPCOMING EVENTS:

June 20th - General Meeting - 6:30PM at Bethlehem - Potluck - Bring dish to pass and your own table service

July 25th - Bible Study at home of Barb & Leonard Graf - 6:30PM - RSVP by July 22nd to Barb 946-5 120

Potluck: meat and drinks provided - Bring dish to pass, lawn chair and a Friend!

Bible Study: Second session on "Let Us Pray"

WELCA PROJECT FOR TOILETRY/UTILITY BAGS IS CONTINUING!!

We will continue to collect items throughout this year to fill the cosmetic/utility bags for men and women to be distributed to people at the community meals and Safe Harbor. The list of items needed is attached to the collection box located near the mailboxes. Please take one! Thank you all for your response so far. The students at Traverse City High School very much appreciated being remembered by you.



Evangelical Lutheran Church in America
God's work. Our hands.

ELCA GLOBAL LINKS

Stay informed. Be inspired. Get involved.

2018-19 Young Adults in Global Mission Called to Service

In mid-April, over **80 young adults** were called to serve through the Young Adults in Global Mission program, which sends people ages 21-29 into a year of faith formation, relationship building and transformative service with our companions in **14 countries** around the world. To learn more about this year's participants and how to support them, contact globalchurch@elca.org. Please join us in welcoming and praying for these individuals as they prepare to enter service in August.

First International Women Leaders Scholar Graduates

On April 28, Sarah Abendanon of the Evangelical Lutheran Church in Suriname graduated from Augsburg University, making her the first of the ELCA International Women Leaders scholarship recipients to complete her studies. Since 2015, 24 women, including Sarah, have received scholarships to study at ELCA institutions in the United States through International Women Leaders, which supports emerging women leaders from our companion churches in pursuit of further education. Learn more at ELCA.org/IWL.

Strengthening the Church in Central America

The Lutheran churches in Costa Rica and Honduras are small but have a strong commitment to serve the most marginalized and impoverished people in their countries. Through the global ministry project Strengthening the Church for Mission and Ministry, the ELCA has committed to accompanying these churches as they build up a strong foundation to continue serving those most in need. The church in Honduras is one of our synod's companion churches. For additional information about this project learn more at: [http://download.elca.org/ELCA%20Resource%20Repository/Central America Honduras CostaRica Strengthening Small Churches.pdf](http://download.elca.org/ELCA%20Resource%20Repository/Central%20America%20Honduras%20CostaRica%20Strengthening%20Small%20Churches.pdf)

First Lutheran Women Ordained in Thailand

On April 27, [The Evangelical Lutheran Church in Thailand](#), a member of The Lutheran World Federation, ordained its first two women pastors, the Rev. Jongkolnee Sampachanyanon Sim and the Rev. Somporn Kulachote. View the posted photos at: <https://www.lutheranworld.org/news/thailand-first-lutheran-women-ordained-ministry>

WORSHIP VOLUNTEERS ARE STILL NEEDED

There are many opportunities for our members to be a part of any of BLC's three services. Some are "in front of the congregation" and many are behind the scenes. With more volunteers on the list for each worship team, the rotation could be every 4 – 6 weeks more or less. We also have music teams that could use your voice or musical skills. Please prayerfully consider joining one of these worship/music teams (training is available for all):

1. **Altar Guild:** Prepares the altar for worship and Communion (one group of two people per weekend)
2. **Assisting Ministers:** Assists the pastor during the worship service and helps serve Communion (one per each of three services)
3. **A/V Team:** Sits in the balcony & manages the weekly "Screenouncements" and worship power point presentations (Sat. 5pm/Sun. 11am)
4. **Lectors:** Reads the Scripture lessons at worship services (one per each of three services)
5. **Hospitality:** Greets people at the door to the Sanctuary, hands out worship folders and collects the offering (groups of two people each for the Sat 5pm and Sun 8:45am services and groups of four people for the Sun 11am service)
6. **Bell Ringers:** Rings the BLC bell in the Gathering Space at the beginning of the service (one per each of three services)
7. **Welcome Table:** Greets people as they enter the church from the parking lot and assists visitors with the layout of the church (coat room, restrooms, nursery, Fellowship Hall, etc) (one or two per each of three services)
8. **Worship Assembly and Sanctuary Preparation:** Assembles the weekly worship folder and prepares the Sanctuary (one group of two people per weekend)
9. **Counters:** Counts the weekly offering collection. (Teams of three or four will rotate on a monthly basis)

1. **Adult Choir:** Sings at different services each month. Rehearses weekly, except for summer months.
2. **Hand Bell Choir:** Plays approximately once per month in a Traditional and Modern service. Rehearses weekly, except for summer months.
3. **Worship Team:** Leads music once a month at the Celebrate! And Modern services. Rehearses weekly, year round.
4. **Steel Pans:** Plays once a month at various services, mostly during the summer months and Christmas services.

For Worship Volunteer Teams 1 through 8, please contact Barbara Oster at 231-668-7038 or beo6475@yahoo.com

For Counters, please contact Shelly McAllister at smcallister3@hotmail.com

For Music Teams, please contact our Music Coordinator, Sharon Weller at 231-947-9880.

THANK YOU, THANK YOU, THANK YOU to all who participated in Cookies, Coffee, and Conversation.

XYZ

Thank you to all who attended the XYZ lunches and programs during the past 'season'. Our recent trip to the American Waste Recycling Plant was very interesting and informative. A huge thank you to all those who helped to make these gatherings a success, especially to the dish washing crew. Also a thank you to those who did the programs and to Oleson's Food Stores and the Great Lake Potato Chip Company for their donation of food. We had a nice variety of programs and the lunches were super with a great mix and plenty of food.

Attendance was down a little bit, we certainly would like to see more faces. Maybe a different day of the week, a different time or format is something we should think about. Please let us know if you have any thoughts or ideas which would encourage greater participation. As always ideas for programs are encouraged. We will take the summer off but get back at it in September. Any thoughts, ideas and or questions can be directed to Butch or Jan at 241-271-3802 or etwaisanen@centurytel.net

Thanks - Wish U Enough,
Butch

SMALL GROUP BIBLE STUDY

New Folks are always Welcome!!!!

A Bethlehem tradition for more than a decade has been for small groups to discuss the work of Christ in our lives using Bible references and published materials. Through our study we experience a closer bond to Christ and to each other. Having Christ centered mutual support from our friends is very uplifting and helps us develop the spiritual gifts we are to share with each other. We welcome you to join a group or create one of your own that meets at a time more convenient to you. For questions, call BJ Christensen 231-228-3426.

<u>Meeting time</u>	<u>Facilitator</u>	<u>Location</u>	<u>Theme</u>
3 rd Sunday 12:30pm	Cindy Monroe 231-941-0788	Betty Rutila's Home	Poverty
3 rd Monday 3:00pm	Barbara Oster 231-668-7038	BLC Conference Room	Monthly Study from Living Lutheran
3 rd Tuesday 7:00pm	Joy Johnson 231-357-7722	Helen Rafeld's House	Revelation "Breaking the Code"
3 rd Thursday 1:00pm	Suzanne Lehto 231-223-7187	BLC	Small Catechism
3 rd Sunday 12:30pm	BJ & Tom Christensen 231-228-3426	BLC	Martin Luther 95 Theses
2 nd Friday 6:00pm	Matt Branch & Tina Dohm Faith and Family	BLC	Raising Kids God's Way



Book/Supper Discussion Group

We meet from 5 to 7 pm on the 4th Tuesday of the month. Join us, and if you have any questions, please contact Ellie Long at 231-935-4595.

May 23—A Wrinkle in Time by Madeline L'Engle

June 26—The Whistling Season by Ivan Doig

July—NO MEETING

August 29—A Gentleman in Moscow by Amor Towles

September 25—Lilac Girls* by Martha Hall Kelly

October 23—Before We Were Yours by Lisa Wingate

November 27—Discussion with Paul Wiemerslage about
our Christian relationship to God's Creation

December 4—POTLUCK

(*Based on a true story)

THANK YOU---THANK YOU and keep up the good work. Please continue to turn in your Oleson's receipts!



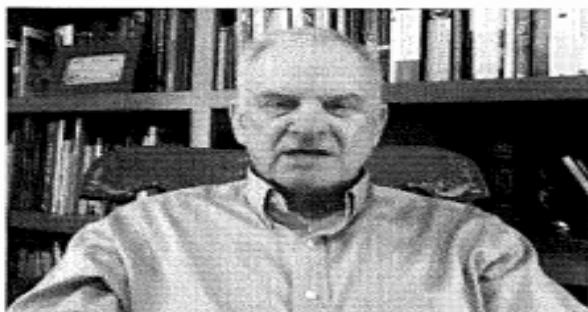
SHOP AT FAMILY FARE AND HELP RAISE MONEY FOR QUILTS!!

Shop at Family Fare, 905 E. 8th Street here in Traverse City (or at any Family Fare in the area) and help raise money for quilts!

*To warm others with more than a prayers,
save register receipts when you shop Family Fare!
Lutheran World Relief quilters need help from you.
Bring Family Fare receipts to us that you could do.
This helps raise money for the supplies it will take...
for fabric, thread, and shipping necessary for the quilts we make!*

Questions? Please call Betty Rutila at 231-947-1013

Important Endowment News, Video on Kiosk



Former Bethlehem Pastor David Gabel speaks of

Mission Endowment History in new video

There are two pieces of news about Bethlehem and our (formerly-named) "Endowment Fund."

- First, the name of the previously-referred-to "Endowment Fund" - intended predominantly for funding mission work outside Bethlehem's walls - was refocused to its original scope and name, the "Mission Endowment Fund" (that was actually done a couple years ago, but...) **The Mission Endowment Committee has since worked with former BLC pastor David Gabel to create a short video on the Mission Endowment Fund's history.** This video is now available and will be shown for the next few weeks on the Gathering Space kiosk.
- Second, BLC Church Council voted this May to **formalize the process of eventually creating a second Endowment Fund and Committee, called the "Sustaining Endowment Fund"** - intended for helping fund and sustain specialized ministries for and within Bethlehem. This is an exciting development that is unfolding in the coming months.

Qualified Charitable IRA Distributions

A way to make charitable donations tax-free and still use the standard deduction when filing taxes.

Written by Jim Hutchison

This year Margaret and I have elected to make our donations to the church and other charities using a provision the IRS calls a Qualified Charitable IRA Distribution. These withdrawals from my IRA are not subject to income tax. If you qualify, you may wish to investigate this form of giving.

To qualify

- You must be age 70 $\frac{1}{2}$ or older.
- The donation must be transferred directly from a traditional IRA to the charity.

To set up our donation I use the web site of my IRA manager - in my case TIAA/CREF. I fill out a form listing the amount of my withdrawal with the name and address of the charitable origination to which they will directly send a check. I need to complete the form every time we make a donation. We plan to make quarterly donations to the church and annual donations to other charities.

This donation is not counted as part of the taxable income we receive from the IRA, hence we lower our tax bill, and we will be able to take advantage of the new higher standard deduction when we file our taxes. Even though the donation does not count as taxable income, it does count toward satisfying the Required Minimum Distribution (RMD).

Please note I am only describing my understanding of this type of IRA withdrawal. I am not qualified to offer tax advice. You should consult a tax advisor or IRA manager. A web search for *Qualified Charitable IRA Distributions* will generate useful information.



The Worship & Music Committee has restored the custom of honoring new members of the family of God with a rose at the Altar. Those who wish to celebrate their new child or grandchild can contact committee chair, Barbara Oster at: beo6475@yahoo.com or via phone 668-7038. The cost is \$10.00 to be submitted to the church office, or labeled as such and placed in the collection plate. The rose and vase can be taken by the family after the 11:00 service on Sunday.

Musicality

Another way to support your Bethlehem Music Department is to join one of the music groups. Depending on the one you join, you could be a part of services every 2 months, once a month, once every three weeks, or about every other week. They all have different schedules. What fits you best?

Your choices are steel pans, bells, Worship Team, and choir. They rehearse once a week with trained directors and really build up quite a comradery. It's fun. Think about it.



Did you know Love In the Name of Christ has a Medical Equipment Loan Ministry? If you, a friend or a family members needs a wheelchair, walker, cane, bathroom equipment or more, we can help! We have closet locations at Christ the King in Acme, Grace Episcopal mid-town, St. Patrick in the Grawn area and at the Love INC offices on East Front Street. **Call 941-5683** to speak with us about a loan or a donation of equipment. Thanks to our partnership you can have love and care at home!

Habitat for Humanity

Habitat for Humanity is always looking for volunteers:

1. Skilled/Unskilled volunteers to serve as site coaches leading and teaching groups of volunteers in finish carpentry. No experience necessary.
 2. Committee Members. Time commitment is about three hours a month. Committees needing members are Faith Relations, Family Selection and Events.
 3. Re-Store volunteers / Donation drives / Pickup and Delivery
 4. Lunch volunteers to feed construction site crews.
 5. Deconstruction teams to salvage materials to be sold at the Re-Sale Store.
- If you're interested in helping out, please call Michelle Reichert at 231-941-4663



Health Concerns*

***Richard Fernholz, Ron Hellenga, Nancy Smith,
Miriam Schreck, Margie Whitney, Jo Hasse, Mary Gordon,
Tom Woodworth, Ellie Tacke, Vern and Bev Atwood,
Kate Holtfreter, Sherryl Hellenga, Mary Lou Deutsch,
Joyce Rombouts, Marlene Baesch, Virginia Fleming,
Dan Morley and Harper Wiemerschlage***

Grand Traverse Pavilions: Virginia Fleming

Joy Givers: Hazel Lautner **Boardman Lake Glens:** Inge Thomas

French Manor: Mary Gordon, Joyce Rombouts

Traverse Manor: Margie Whitney, Juanita Lautner

French Manor Lafranier: Jo Hasse **Orchard Creek:** Miriam Schreck

Kate Holtfreter will be in Ann Arbor recovering from her kidney transplant for several weeks: Cards c/o Marcia Wells, 1190 Jeffery Lane, Saline, MI 48176.

Dan Morley will be in Ann Arbor at UofM for several weeks: Cards to Daniel Morley, 8A UH room 8403, 1500 Medical Center Dr, Ann Arbor, MI 48109-5110.

Hospital Visits: Please let the church office know if you are going into the hospital for a scheduled procedure or an emergency so Pastor Paul can visit you.



BLC's PRAYER CHAIN is always seeking partners in prayer.

More volunteers are needed for this crucial ministry.

**For more information or to set the Prayer Chain in motion,
call Jan Stretlien @ 947-3265 or email jstretlen@gmail.net.**

*If you would like your name, or the name of a loved one, to appear on this list which appears here and in the weekly bulletin, please call the church office at 947-9880.

Are you checking for the latest BLC updates at: www.bethlehemtc.org?

You saw Norm and others take the photos...be sure you see them at www.bethlehemtc.org!

Good News...and great news...at www.bethlehemtc.org...

OPTIONS FOR OUTSIDE ACTIVITIES:

****FATHER FRED:** Needs drivers to pick up furniture from donors. Call Sue, the volunteer coordinator at 231-947-2055 Ext 134 or email sbauer@fatherfred.org for more details if you could donate a small amount of your time.

****GRAND TRAVERSE BAY AREA STROKE CLUB:** Monthly Activities on June 13, and August 8. With questions, contact Melinda Hollands, LMSW at 231-935-6380.

XYZ'ers at American Waste



WELCA Toiletries Bags



CHILI COOK-OFF WINNERS



L-R: Meredith Busekist, Jodi Kelly, Alexis Steig and Peg Pepler

MEREDITH BUSEKIST'S CHILI (1st Place)

Traverse City is known for its cherries, nearby sandy dunes, and white chicken chili. I knew I had to find a recipe I could make at home that would come close to the first bowl I had after we arrived (thank you Minervas). I stumbled across a Record Eagle article that shared an "Award-Winning White Chicken Chili," recipe from an old hotel that was no longer in business. I gave it a try and found it lived up to its name. It's especially good on a cold evening or to serve a crowd. Enjoy!

"Award-Winning White Chicken Chili"

- 1 packet of El Paso Original Taco Seasoning
- 4-15 ounce cans northern white beans (drained and rinsed)
- 3 lbs. chicken breast – cooked as original recipe suggests
- 1 stick butter
- 1 large Spanish onion, diced
- 2 T. garlic, minced
- 1 jalapeno, diced – removed veins and seeds (optional)
- 2 T. chili powder
- 2 T. ground cumin
- 1/4 c. all-purpose flour
- 5 c. chicken stock
- 2 c. half and half (or milk)
- 2 T. kosher salt
- 10 dashes of favorite hot sauce (optional)
- 3 T. Worcestershire sauce
- 1 lb. shredded Monterey Jack cheese

Preheat oven to 375. Rub the chicken with the taco seasoning. Bake until chicken tests 165 degrees, (about 30 minutes). Let meat cool a bit and dice into bite size pieces or shred with two forks. Set meat aside until soup is made.

Melt butter and sauté onion, garlic and jalapenos until the onions are translucent. Drain and rinse beans and add to sautéed mixture, cooking for five minutes.

Combine chili powder, cumin and flour together in a bowl, then add to soup, stir for five minutes. Add chicken stock, half and half, kosher salt, red hot sauce and Worcestershire, cooking until mixture is thickened and beans are soft. Add shredded chicken and cheese, stirring until cheese is melted. Makes one gallon.

JODI KELLY'S CHILI (2nd Place)

1 ½ Medium Onions, chopped coarse
2-3 Med Garlic Cloves, minced fine (or ½ tsp Garlic Powder)
1 Tbls Vegetable Oil
2 lbs Ground Round or Ground Chuck
1 ½ tsp Ground Cumin
1 Tbls Chili Powder
1 Can Tomato Soup
1 Jar Benmamin Twiggs Garden Vegetable Cherry Salsa

1 Can Diced Tomatoes

1 Can Whole Peeled Tomatoes, chopped coarse (14.5 oz)

1 C Benjamin Twiggs Dried Cherries

1 Can Dark or Light Red Kidney Beans, drained and rinsed (1/2 can works well too)

1 Can Canellini-white kidney beans, drained and rinsed (1/2 can works well too)

Salt and Pepper to taste

Directions:

Soak dried cherries in very hot water for 10 minutes to soften and plump.

Heat oil and saute onions and garlic over medium heat, until soft and translucent.

Add ground beef and cook till no pink remains.

Add the next 6 ingredients, including the cherries, drained, and cook, stirring often, for 5 minutes.

Add beans and stir gently, until well combined.

Add salt and pepper to taste.

Let chili simmer on low heat for 10 minutes.

Serves 6-8---I doubled the recipe using only 1 can of each bean and one can of diced tomatoes.

PEG PEPLER'S CHILI (3rd Place)

This recipe makes 3 gallons so I have done the math and given both the full recipe and the saner family size option!

FULL RECIPE

1/2C. vegetable oil
2 pounds boneless pork, cut in small dice
3 ½ pounds round steak, cut in small dice
4 pounds ground round
3 large onions, diced
3 large green peppers, diced
6 Tbls plus 2 t. minced fresh garlic
6 small hot peppers (or to taste), minced
6 bay leaves
6 ounces chili powder
4 ounces cumin powder
4 ounces beef base granules
2 T. Accent (optional)
½ ounce dried minced onion (about 2T)
1t. celery salt
1t. sugar
1t. black pepper
½ t. allspice
½ t. seasoned salt
¼ t. dried basil
¼ t. dried oregano
4- 28 ounce cans tomatoes, chopped (undrained)
3-15 ounce cans tomato puree
3-6 ounce cans tomato juice

SMALLER BATCH

2T vegetable oil
½ pound boneless pork
¾ pound round steak
1 pound ground round
1 medium onion, diced
1 medium green pepper, diced
1 Tbls plus 2 t. minced fresh garlic
1-2 small hot peppers (or to taste)
1-2 bay leaves
1.5 ounces chili powder
1 ounce cumin powder
1 ounce beef base granules
½ T. Accent (optional)
1/8 ounce dried minced onion (about ½ T.)
¼ t. celery salt
¼ t. sugar
¼ t. black pepper
1/8 t. allspice
1/8 t. seasoned salt
pinch basil
pinch oregano
1-28 ounce can tomatoes, chopped
1 ½ 15 ounce cans tomato puree
1 ½ 6 ounce cans tomato juice

In a large Dutch oven or stewpot, heat some of the oil until shimmering. Add 1/3 of the diced meats and sauté until browned then remove to a bowl and repeat twice with the remaining meats and oil. Set aside. Add the onions, peppers, garlic and hot peppers and sauté until softened. Add the seasonings and cook until fragrant, about 30 seconds. Add tomatoes, puree and one can of the tomato juice. Add back the meats and stir well. Bring the chili to a boil then lower heat to a simmer and simmer for several hours until the meats are tender, stirring often. Chili at this point can be put into a slow cooker on low and cook for several hours, about 8, until the meat is tender. If the chili seems too thick, add more of the tomato juice.

Congratulations to all three of these ladies! All who attended also “won”...it was a fantastic meal 😊 Thank you to everyone who helped make this a successful event!!



BLC Contacts

PLEASE NOTE SEVERAL ADDRESS UPDATES

Church Office

Pastor Paul Busekist	paul.busekist@bethlehemtc.org
Admin. Asst. Sharon Weller	admin@bethlehemtc.org
Admin. Aide Renae Wells	admin@bethlehemtc.org
Mary Lou Deutsch/Phil Anderson	
Bookkeepers	bookkeeper@bethlehemtc.org
Sharon Weller, Music Director	sharon.weller@bethlehemtc.org
Alexis Steig, Youth & Outreach Director	alexis.steig@bethlehemtc.org
Meghan Denton, Christian Ed Coord.	meghan.denton@bethlehemtc.org
Website	www.bethlehemtc.org

Church Council

Phil Anderson, President	president.council@bethlehemtc.org
Jim Parkinson, Vice President	vicepresident.council@bethlehemtc.org
Tim Fox, Secretary	secretary.council@bethlehemtc.org
Dave Pepler, Treasurer	treasurer.council@bethlehemtc.org
Shelly McAllister, Financial Sec.	secretary.council@bethlehemtc.org
Jan Stretlien, Christian Care Giving	christiancaregiving.committee@bethlehemtc.org
Dianne Blair, Christian Ed.	christianeducation@bethlehemtc.org
LoAnn VandeLeest, Evangelism	evangelism@bethlehemtc.org
Chuck Ardingo, Fellowship	fellowship.committee@bethlehemtc.org
LoAnn VandeLeest, Membership	membershipevangelism.committee@bethlehemtc.org
_____, Personnel	personnel.committee@bethlehemtc.org
Carl Lehto, Property	property.committee@bethlehemtc.org
Barbara Wright, Stewardship	stewardship.committee@bethlehemtc.org
Barbara Oster, Worship and Music	worship.committee@bethlehemtc.org
Jodi Kelly, Youth/Y2A	youth.committee@bethlehemtc.org

If you have an interest in serving on any of the above Committees,
Please contact the Committee Chairperson(s).

Sun	Mon	Tue	Wed	Thu	Fri	Sat
27	28	29	30	31	1	2
8:45am - Worship Service 9:45am - WELCA Board 11am - Modern Worship - S 12:30pm - Wor. & Mus.	10am - Alanon-B 10am - Alanon-LR3 10am - Staff Meeting 3:30pm - Lessons/Weller 4pm - Drive My Way 6:30pm - Gamblers	9am - Prayer Shawl 9am - Property Work Group 3pm - LessonsWarne 4pm - Drive My Way 6pm - Christian Ed Mtg. 6:30pm - Evang/Membershi	2pm - Communion Party-BR 3pm - Lessons/Weller 4pm - Drive My Way 7pm - Worship Team	11am - Peppier Meeting 3pm - LessonsWarne 4pm - Drive My Way 5:30pm - ACOA (LR) 6:30pm - Gamblers	10am - Alanon-B 10am - Alanon-LR3 12pm - Sisco Food Prep 2:30pm - Rehearsal/SlJazz 6:30pm - Sisco Benefit	5pm - Celebrate! Worship
10	11	12	13	14	15	16
8:45am - Worship Service 11am - Modern Worship - S 12:30pm - VBS Plan Mtg.	10am - Alanon-B 10am - Alanon-LR3 10am - Staff Meeting 3:30pm - Lessons/Weller 4pm - Drive My Way 6pm - Sew Piecetail Quilters 6:30pm - Gamblers	9am - Prayer Shawl 9am - Property Work Group 10am - Finance-CR 12pm - Sarah Circle 3pm - Executive Committee 3pm - LessonsWarne 4pm - Drive My Way 6pm - Y2A Meeting (C) 7pm - Ruth Circle (GS)	9am - Drive My Way 9:30am - Quilters By the 3pm - Lessons/Weller 7pm - Worship Team	9am - Baby Panty-FH 9am - Drive My Way 1pm - RebeccaAnn Circle 3pm - LessonsWarne 5:30pm - ACOA (LR) 6:30pm - Gamblers	10am - Alanon-B 10am - Alanon-LR3 2:30pm - Rehearsal/SlJazz	5pm - Worship-S
17	18	19	20	21	22	23
8:45am - Worship Service 11am - Modern Worship - S 2pm - Christensen Small	9am - Drive My Way 10am - Alanon-B 10am - Alanon-LR3 10am - Staff Meeting 3pm - Oster Small Group 3:30pm - Lessons/Weller 6:30pm - Gamblers	9am - Drive My Way 9am - Prayer Shawl 9am - Property Work Group 3pm - LessonsWarne 6pm - Council Meeting 7pm - Gray SG 7pm - Lautner SG @ the	9am - Drive My Way 10am - Winkler Memorial @ 11am - Winkler Luncheon 3pm - Lessons/Weller 4:30pm - Set-Up-WELCA 6pm - Gathering Mtg 6:30pm - WELCA General 7pm - Worship Team	9am - Drive My Way 3pm - LessonsWarne 5:30pm - ACOA (LR) 6:30pm - Gamblers	10am - Alanon-B 10am - Alanon-LR3 1pm - Drive My Way 2:30pm - Rehearsal/SlJazz	1pm - Drive My Way 5pm - Worship-S
24	25	26	27	28	29	30
8:45am - Worship Service 11am - Modern Worship - S 1pm - Drive My Way	10am - Alanon-B 10am - Alanon-LR3 10am - Staff Meeting 3:30pm - Lessons/Weller 6pm - Sew Piecetail Quilters 6:30pm - Gamblers	ELCA Natl. Gathering @ Houston, TX, USA		9am - Baby Panty-FH 3pm - LessonsWarne 5:30pm - ACOA (LR) 6:30pm - Gamblers	10am - Alanon-B 10am - Alanon-LR3 2:30pm - Rehearsal/SlJazz	5pm - Worship-S

Because of the many activities here at BLC, this is only a partial calendar. You can view the entire calendar at <http://www.bethlehemtc.org/community-calendar> or call the office at 947-9880 for more information (and corrections/additions).