



**Bethlehem**  
LUTHERAN CHURCH

**Traverse City, MI 49686**  
**(231) 947-9880**

# May 2018



Website: [www.bethlehemtc.org](http://www.bethlehemtc.org)  
Email: [bethlehem@bethlehemtc.org](mailto:bethlehem@bethlehemtc.org)

### Building Hours:

Monday – Thursday, 9am to 3pm

### Office Hours

Monday – Thursday, 9am to 3pm

### Worship Times:

Saturday: 5 pm Celebrate! Worship  
Sunday: 8:45 am Traditional Worship  
9:45 am Education Hour  
11 am Modern Worship

Communion at all services

## Follow the STAR to Bethlehem!

### Our Mission...

**“We journey with God, to serve with love”**

### Our Vision...

*“As a community of believers journeying with God together, we at Bethlehem are called to serve with love by growing a premier youth ministry; enlivening Christian discipleship through lifelong learning, care, and spiritual formation; fostering a vibrant and inspiring worship experience; utilizing our natural setting and location for faithful creation care and outdoor ministry; and opening our doors always to be a “campus at the crossroads” for the mission and ministry of Jesus Christ.”*



What did Pentecost?

When I was a kid, my father used to tell me these corny geography one-liners to help my sister and I remember the names of U.S. states. You have probably heard most if not all of them: "What did Mississippi? She sipped a Minnesota. What did Delaware? ...A New Jersey, etc, etc. Corny, yes. But they worked. My favorite was probably "What did Tennessee?" The answer (you guessed it) was "She saw what Arkansas." But for some reason, with Pentecost now firmly in my mind and heart this May, I wonder...in a very serious way...how would we Christians respond to this question: "What did Pentecost?"

The answers likely vary by the number of readers of this document. Some answers may sound very Lutheran ("It doesn't 'cost' us anything! God's grace is FREE!) But in other ways, the Pentecost message is far more complex, critical and beautiful than a quick or corny response would warrant. Pentecost is when God's Holy Spirit welcomed every language and every people to partake in the one language we all know by heart: Love. And while it may not 'cost' us anything, when we give grace to one another, the value of the newness of life through the Gospel is beyond any earthly price.

This month we turn the corner from Easter to Pentecost. And when we do, on May 20<sup>th</sup>, we will partake in a fun exercise (to be named later) that will playfully remind us of this all-inclusive moment in the history of our faith. Stay tuned...

In the meantime, I invite you to look ahead at these future waypoints on the Pentecost journey:

- **Fun: Verse ONTAP** (this weekend, **May 6th at 6pm**): Let's show our Presbyterian friends we can match their presence and spirit at **The Workshop Brewery and Restaurant** for some songs & scripture...our very own Celebrate! Band is performing "Songs on Growing Up," and if you liked classics "Cat's in the Cradle" and "Beautiful Boy" or relatively recent pop hits like "Don't You Worry Child" and "The Story of My Life," you're in for a treat!
- **Work: New Leaders needed!** For Council (coming up in June) and for our *new (tentatively named) "Bethlehem Vision" Strategic Planning Group that Phil Anderson and other leaders hope to launch this month (May)*. Please let us know how we can welcome your voice, your leadership and your gifts to our ministry here moving forward!
- **Study:** A New Bible Study is coming in the fall...and we are open to hearing which biblical book or theme/s interest you. Please contact me if you are interested.

Alleluia, Christ is risen...indeed!

-Pr. Paul

# President's Corner

## For we walk by faith, not by sight. 2 Corinthians 5:7

Each day we see huge mountains looming in the distance. We see giants that block our paths and we start wondering how are we going to scale those heights or battle the giants we fear. All the while, because we are focused on the future, we are not looking where our feet are going and we stumble on the easy path where God is leading us today. We cry out in prayer about our worries about the cliffs ahead or how to fight the giants that might torment us tomorrow. God reminds you to stay centered on the present. Let Him lead, guide, and direct you to green pastures. His plan for you may take an abrupt turn, leading you away from the mountains and the things you fear most. There may be an easier way up the mountains than is visible from today's distance. Keep your mind on the present journey, enjoying God's presence. Trust in Him to open up the way before you.

Spring seems to have finally arrived in northern Michigan! Let us rejoice and be glad. I hope you all heard Jim Hutchison's Temple Talk on "Bridge the Gap". I thought it was spot on and captured the need perfectly. We all love Bethlehem Lutheran Church and its many and diverse ministries. I hope each family will prayerfully consider making a Bridge the Gap donation in the coming weeks. I think I can speak for the church staff and the church council when I tell you that your donations are important to us and we will spend them prudently.

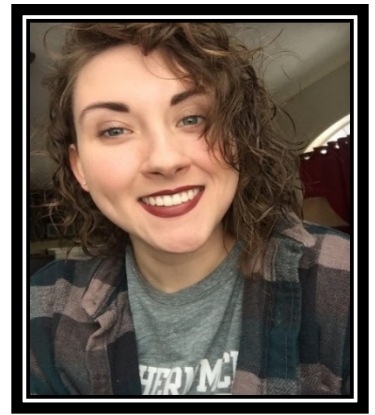
Speaking of Church Council, have you ever considered serving on Church Council? Jim Parkinson, your council Vice President is looking for individuals who would like to take on the challenge of serving on council. He would love to hear from you! Council can be a very fulfilling opportunity to serve your church and become part of the decision-making process.

Get out and embrace the glory of God's creation!

My hand in yours, our hearts with Him,

Phil Anderson, Council President

# FROM THE DESK OF OUR DIRECTOR OF YOUTH AND OUTREACH



'May' the Peace of the Lord be with you all! It's hard to believe that we're nearing the end of the school year!

**THEO** had a record high turn-out in April with **11 students** present!

**Our last meeting** for the school year will be this month on **Sunday, May 6<sup>th</sup>**! We will be joining the Verse ONTAP crew at the Workshop Brewery and Restaurant at 6pm and participating in their programming. It's guaranteed to be a whole lot of fun!

There are only 2 classes left for our **confirmation students**! Taylor Brown will be confirmed on Pentecost Sunday, **May 20<sup>th</sup>**! We will be praying for her during the 8:45am service, plus holding a small **reception** between services starting at 9:45. We hope you can join us!

**VBS'18** planning is coming along nicely! Our next Planning Party will be on **Wednesday, May 23<sup>rd</sup>** from **6pm—8pm**. If you or anyone you know may be interested in volunteering time or talents, please invite them! The more the merrier.

Though the weather initially postponed our efforts, we pulled through with a VERY successful turnout on **April 29<sup>th</sup>** for our **Chili Cook-Off**! A huge **THANK YOU** to all of the chili competitors and folks who donated time, talents and monetary gifts! (Cindy Monroe, Patty Liebenguth, Chuck Ardingo, Kim Mende and Laura & Dan Hahn, plus many others... you guys ROCK!) We couldn't do any of this without you! And congrats to Meredith, Peg and Jodi for taking home the prizes. They were well deserved! The profits (**over \$1,000!!**) will go directly to our trip to The **ELCA National Youth Gathering**, which is coming up in June!!

**Youth and Adult Education "The 30-Minute Journey: Jesus and TED"**—Our first meeting had a great turnout with **15-20** folks attending! We are excited to have Phil Anderson and Cindy Petersen facilitating our next meetings on May 6<sup>th</sup> and May 13<sup>th</sup>!

A closing remark: I recently attended a youth pastor meeting with some other ministers from area churches (Faith Reformed, Living Hope, etc.) and we talked about the changing nature of youth ministry. In today's world, it is important that we are being proactive, from a youth director *and* congregant perspective.

If we want kids to experience Christ, it's our job to show His love to them and be willing to mentor them through it. We are evolving out of the age of the traditional youth group—it's time that we grow with the changing of times, and it's going to be a community effort! Please take the time to connect with our youth, whether that be attending school events or just spending time with them at church.

Your care and compassion reaches further than you know! ☺

Peace and Blessings,

*Alexis Steig*

Director of Youth and Outreach  
Bethlehem Lutheran, TC

# **CHRISTIAN EDUCATION HIGHLIGHTS MAY 2018**



Spring is in the air folks! Although we were still seeing snow late in April, summer is quickly approaching. Most colleges around our area are wrapping up spring semester the first week of May, soon our elementary, middle and high schools will be doing the same, as will Sunday school, Confirmation, and Blues.

The last day of Sunday school for this school year will be May 20<sup>th</sup>. We will celebrate our year by dedicating our Sunday school tree that we planted at the beginning of the year, followed by a few songs and games during the education hour. "The Well" will start up the following Sunday, June 3<sup>rd</sup> and will be held throughout the summer every Sunday (unless otherwise noted) at the 11 o'clock service. (Pastor Art Newhouse will hold down the fort at BLC for the 11am service on the 20<sup>th</sup>.)

The congregation will also be celebrating Taylor Brown's confirmation on May 20<sup>th</sup> during the 8:45 service. There will be a reception in the gathering space following her confirmation before Taylor, Alexis and Pastor Paul depart to Feast of Victory to celebrate her confirmation amongst her fellow confirmands.

Blues will have their final gathering on May 25<sup>th</sup> at 5 pm. Families are welcome to join us as we hike the Vasa trail and celebrate God's creation! Contact Alexis or myself for more information.

Dianne Blair will be teaching Bibles to 3<sup>rd</sup> Graders Classes beginning April 29<sup>th</sup>. Class will meet on 4/29, 5/6, 5/13 and 5/27 (unless otherwise noted) and will be held during the education hour. Please contact Dianne with any questions.

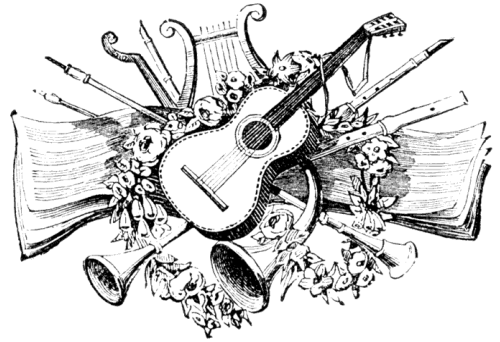
Mark your calendars for May 23<sup>rd</sup>! We are having our second VBS '18 planning party from 6pm to 8pm. We will be checking in with activity station leaders, learning some of the music and choreography and talking about supplies. Dinner will be potluck style so bring a dish to pass. Contact Alexis or myself if you would like to sign up to bring a dish or have any material donations or are looking for a volunteer opportunity and, of course, if you have any questions.

Peace and blessing to all, this spring season!

*Meghan Denton*  
Christian Education Coordinator

### **VERSE ON TAP:**

Our next event is taking place on Sunday, May 6 at 6:00 pm at the Workshop Brewery and Restaurant. Our Own "Celebrate Band" will be providing the music, and the TC Presbyterian Church will facilitate the discussion based on our theme of "Songs on Growing Up". Our THEO group will be joining us as well.



**Prayer shared by Cindy Monroe:** Almighty God, our Rock and our Salvation, we beg you to pour out your Holy Spirit upon our fractured Nation. Heal the divisions that separate us, and remove all obstacles to authentic unity. May you guide this great country of ours and lead our citizen to embrace one another as neighbors and fellow countrymen, created in your own image and likeness. Give us a fresh opportunity for renewal and true solidarity for the common good of our Homeland. May we return to our true identity as a people of faith and charity. Help us to always remain One Nation, Under God, Indivisible, with Liberty and Justice for all. Amen

**YOUTH AND ADULT ED: The 30 Minute Journey is here!!!!** We have 2 Sundays left: May 6 & 13 from 10:15-10:45. Join us for this Adult Ed class. Having educational opportunities for adults was highly requested in our Congregational Survey.

### **Welcome Our New Bookkeeper**

We welcome our New Bookkeeper, Phil Anderson!!!!

Phil will be moving out of his role as Council President and into the Bookkeeper position over the next couple months. He was already scheduled to step down as President in June when his two year term ended, so this move fits nicely into his future plans. He intends to remain on Council in a non-voting capacity. His voice on the Council has been extremely valuable in the past and will benefit us going forward. Please join us in welcoming and congratulating Phil!

### **CHURCH COUNCIL REMINDER:**

Our next Church Council meeting will be Tuesday, May 16, promptly at 6 pm in the Fellowship Hall. All Members are invited to attend at any time. We have two opportunities for your suggestions or comments; one at the beginning and one at the end of the meeting. I invite you to attend and watch your Council at work.

**MEN'S CLUB:** Our Men's Club will be meeting on Wednesday, May 23, at 6:00pm in the office. If you have any questions or would like to join us (men only) please contact Chuck Ardingo, 206-919-7487 or dingo457@msn.com.

## TREASURER UPDATE:

Income for March was \$29,902 with expenses of \$35,088 resulting in a negative cash flow of \$5,188. While it is concerning whenever cash flow is negative, keep in mind that revenue and expense fluctuates month to month depending on how many Sundays there are...how many paydays there are...one time income or expense, etc. From a budget perspective, we anticipated and budgeted March to have a negative cash flow; however too many negative months in a row is when problems arise. April is budgeted to be a positive cash flow month due to there being five Sundays (includes Easter) and only two paydays.

With April budgeted to have a strong cash flow, it will provide us with a good indicator of how our year is shaping up after the first four months. It is also the month after which the Finance Committee and Church Council will be evaluating how we are doing on our goal to have a balanced budget by year end. You may recall the Budget Resolution from last December where the commitment was made to be on track for a balanced budget by year end or steps would be taken to get back on track.

Income for the first two Sundays of April was weaker than budgeted and the third Sunday was snowed out. Hopefully collections from the fourth Sunday will make up for the snow-out and we can get on track. As always let me know if you have questions.

Dave Pepler - Treasurer

---


### Council Meeting of 4/17/2018

The subject that really popped out to me from our April Church Council Meeting was the presentation during our Visitor or Congregational Comments section of the meeting agenda by Sergeant Gray of the Traverse City Police Department regarding an “active shooter situation.” Sgt. Gray spoke for about 15 minutes to Council discussing active shooter situations on an informational basis and showed us a video regarding this. It was all very basic. The main “take away” that Sgt. Gray wanted us to keep in mind that should we ever be in an active shooter situation, whether at Bethlehem or elsewhere, our response should be in the following order: first, **RUN**; second, **HIDE**; and if left with no other choice, **FIGHT** by any means that you have available. Sgt. Gray suggested that we have an Emergency Action Plan for Bethlehem, which your Council will be putting together. The active shooter situation is something we all pray and hope we, nor anyone, has to deal with, but we must be educated and prepared to respond.

Blessings,

Tim Fox, Church Council Secretary





**WOMEN OF BETHLEHEM**  
**MAY 2018**



Spring is here! Praise the Lord! The following is taken from *'Touchpoints Guideposts'*: 'Psalm 95 speaks of worship as a reverent celebration. We express our devotion to God by singing His praises and celebrating His goodness with shouts of joy. Yet we also kneel in humility and great reverence before the Creator and Ruler of the universe. The dual focus of celebration and reverence keeps our worship from becoming either too restrained or too superficial.' Spring is always a time of gratitude and gladness that winter is over. We so enjoy the warmth of the sun, melting snow, buds springing forth, robins, and the list goes on. Take time to be glad and to kneel before the Creator in gratitude and reverence for all of His blessings.

\*\*\*\*\*

**WELCA PROJECT:** Toiletry/utility bags: Items for these bags will be collected through May 31st. Bags will be distributed to Traverse City High School students and during community meals. There is a list of items by the WELCA box near the mailboxes.

Please take one.

\*\*\*\*\*

**MAY BIBLE STUDY:** Taken from the May issue of *Gather* magazine. It is entitled "All Are Welcome" written by Julie A. Kanarr. "More than just 'good manners', hospitality is a spiritual matter. Our invitation can - and should - reflect the hospitality of Jesus." We will discuss hospitality within our own lives and congregation.

\*\*\*\*\*

**SPRING BLESSINGS:** (Spring Fling) - May 4th - 6:30PM



**HAPPY MOTHER'S DAY!**





Evangelical Lutheran Church in America  
God's work. Our hands.

# ELCA GLOBAL LINKS

Stay informed. Be inspired. Get involved.

## **LWF delegates speak at U.N.'s Commission on the Status of Women**

At this year's 62nd session of the U.N.'s Commission on the Status of Women, a panel of representatives from The Lutheran World Federation (LWF) and other faith-based organizations discussed the significant role that faith-based organizations play in advocating for women's rights. Learn more about the faith coalition on the LWF website.

<https://www.lutheranworld.org/news/faith-actors-vocal-promoting-womens-rights>

## **Renewal in Nigeria**

[The Lutheran Church of Christ in Nigeria](#) is in the midst of a renewal campaign to revitalize the church's educational ministries and welcome members and youth to better understand their faith as Lutheran Christians. The ELCA has been invited to be a part of this renewal process, helping raise \$350,000 toward evaluating and restructuring education initiatives and increasing youth engagement in creative new ways. Go to the web site below to learn more about this [global ministry project](#) and how to support it.

<http://www.evangelikus.hu/english/service-others-%E2%80%93-interview-pearl-penumaka?language=en>

## **Updates on the South Sudan global ministry project**

Since its official dedication in November, the new Reconciliation Lutheran Church in Juba, South Sudan, has become an important center for the community, with *over 1,000 people attending weekly worship* and many more receiving skills training and health care through the community center and clinic. Gifts to the South Sudan Global Ministry project have brought us this far, but Reconciliation still needs support to provide necessary resources and programming. See photos of this incredible ministry in action on BLC bulletin board, or at:

<https://www.facebook.com/ELCAGlobalChurch/posts/1862423767124225>

## **Outreach in Malaysia**

With laws in place that prohibit evangelism to Muslim or Malay people in Malaysia, it is challenging for the Lutheran Church in Malaysia to continue growing. However, the largely ethnic-Chinese Lutheran community is seeking to broaden and deepen their outreach with the indigenous Orang Asli, who have been left behind in the development of the country. Learn about how the ELCA is accompanying the Lutheran Church in Malaysia in its [outreach efforts](#) and the development of faithful leaders. See:

[http://download.elca.org/ELCA%20Resource%20Repository/Global\\_Ministries\\_Malaysia.pdf?utm\\_medium=email](http://download.elca.org/ELCA%20Resource%20Repository/Global_Ministries_Malaysia.pdf?utm_medium=email)

## XYZ

Our next XYZ gathering will be **THURSDAY**, May 17 at noon. It will not be a pot luck, but bring your own bag lunch and beverage. We will be carpooling for our appointment at 1 pm to American Waste for a tour of their recycling facility. There will be some walking and stair climbing (both are optional) so wear closed toe/closed heel shoes if you would like to walk and/or just hear the program without doing the stairs. All are welcome to bring a guest (or two). Please contact Jan or Butch Waisanen with questions at [etwaisanen@centurytel.net](mailto:etwaisanen@centurytel.net) or call 231-271-3802.

## **SMALL GROUP BIBLE STUDY**

New Folks are always Welcome!!!!

A Bethlehem tradition for more than a decade has been for small groups to discuss the work of Christ in our lives using Bible references and published materials. Through our study we experience a closer bond to Christ and to each other. Having Christ centered mutual support from our friends is very uplifting and helps us develop the spiritual gifts we are to share with each other. We welcome you to join a group or create one of your own that meets at a time more convenient to you. For questions, call BJ Christensen 231-228-3426.

<b><u>Meeting time</u></b>	<b><u>Facilitator</u></b>	<b><u>Location</u></b>	<b><u>Theme</u></b>
3 <sup>rd</sup> Sunday 12:30pm	Cindy Monroe 231-941-0788	Betty Rutila's Home	Poverty
3 <sup>rd</sup> Monday 3:00pm	Barbara Oster 231-668-7038	BLC Conference Room	Monthly Study from Living Lutheran
3 <sup>rd</sup> Tuesday 7:00pm	Joy Johnson 231-357-7722	Helen Rafeld's House	Revelation "Breaking the Code"
3 <sup>rd</sup> Thursday 1:00pm	Suzanne Lehto 231-223-7187	BLC	Small Catechism
3 <sup>rd</sup> Sunday 12:30pm	BJ & Tom Christensen 231-228-3426	BLC	Martin Luther 95 Theses
2 <sup>nd</sup> Friday 6:00pm	Matt Branch & Tina Dohm Faith and Family	BLC	Lutheranism 101

---

## **YOUTH FUNDRAISER GUIDELINES**

Our church council has adopted a set of Guidelines for all to follow when conducting any kind of fundraiser. These Guidelines are posted in the Gathering Space. Please contact the church office if you would like a copy.

---

### **ACTS Thrift Store and Food Pantry in Williamsburg is looking for volunteers for the following times:**

Food Pantry – Wednesday afternoons and Saturday mornings

Thrift Store – Tuesday-Friday 10am-5pm

Saturday – 10 am-3pm

ACTS provides food, clothing, furniture and household items to people in need from Antrim, Kalkaska and Grand Traverse Counties. They are always looking for donations of clean items in good condition. Contact Matt Maby at 231-463-8002 for more information.

**SHARED BY A WISE MAN—TOM WOODWORTH:** According to Mr. Rogers, “It’s not the honors and the prizes and the fancy outsides of life that ultimately nourish our souls. It’s the knowing that we can be trusted, that we never have to fear the truth, that the bedrock of our very being is firm.”

---



### **Book/Supper Discussion Group**

We meet from 5 to 7 pm on the 4th Tuesday of the month. Join us, and if you have any questions, please contact Ellie Long at 231-935-4595.

May 23—A Wrinkle in Time by Madeline L’Engle

June 26—Before We Were Yours\* by Lisa Wingate

July—NO MEETING

August 29—A Gentleman in Moscow by Amor Towles

September 25—Lilac Girls\* by Martha Hall Kelly

October 23 & November 27—”Still Reviewing Options”

December 4—POTLUCK

(\*Based on a true story)

---

**THANK YOU---THANK YOU** and keep up the good work. For turning in your Oleson’s receipts we received a check for \$228.38. Please continue to share these with us.

---



## **SHOP AT FAMILY FARE AND HELP RAISE MONEY FOR QUILTS!!**

Shop at Family Fare, 905 E. 8<sup>th</sup> Street here in Traverse City (or at any Family Fare in the area) and help raise money for quilts!

*To warm others with more than a prayers,  
save register receipts when you shop Family Fare!  
Lutheran World Relief quilters need help from you.  
Bring Family Fare receipts to us that you could do.  
This helps raise money for the supplies it will take...  
for fabric, thread, and shipping necessary for the quilts we make!*

Questions? Please call Betty Rutila at 231-947-1013

The Stewardship Committee would like to emphasize all aspects of stewardship, not just focusing on the Budget. We all are stewards of the resources, abilities and opportunities that God has entrusted to our care.

Thank you to all who responded to the Congregational survey. There were 2 focus areas:

1. Continual Year long effort We are working on a more viable presence all year long- not just a fall pledge drive. In the works are an on-going Banner Project to span 4 years, more community involvement and exploring world relief donations through alternative means, as well as a Ministry Fair in late September.
2. More revenue from members Now this is an Interesting comment and an ongoing challenge to be sure. Yes, we need more revenue from members. Keep in mind the Budget Gap initiative. We as a congregation passed a deficit budget and we have gathered nearly \$5,000 of our \$6,000 goal to fill the gap. Many thanks to all who have given to date. We hoped that if all members would participate with a \$50 donation, that we could reach our goal. Even if you can't donate \$50, please give what you can- every bit helps.

After all, as Luke 14:28 says: for which of you, desiring to build a tower, does not first sit down and count the cost- whether he has enough to complete it?

Do we have enough to complete our goal? Time is running out, and council will need to make some very difficult alterations to the budget if we cannot come up with the shortfall. So there you have it. I hope that each and everyone of us can prayerfully consider giving more to the **Budget Gap Fund** right now ( green envelopes are in every pew) so that we can maintain and grow the wonderful programs, ministries and quality of life here at BLC.

Lastly, we need more members on our Stewardship Committee. Maybe you've been thinking of becoming more involved at BLC - this is a great place to start. We meet once or twice a month for an hour or so. Please call me with any questions- we would really appreciate your new ideas and assistance. Phone 231-735-3227.

Thank you,  
Barbara Wright  
Stewardship Chair

---

### **Qualified Charitable IRA Distributions**

*A way to make charitable donations tax-free and still use the standard deduction when filing taxes.*

**Written by Jim Hutchison**

This year Margaret and I have elected to make our donations to the church and other charities using a provision the IRS calls a Qualified Charitable IRA Distribution. These withdrawals from my IRA are not subject to income tax. If you qualify, you may wish to investigate this form of giving.

To qualify

- You must be age **70 ½** or older.
- The donation must be transferred directly from a traditional IRA to the charity.

To set up our donation I use the web site of my IRA manager - in my case TIAA/CREF. I fill out a form listing the amount of my withdrawal with the name and address of the charitable origination to which they will directly send a check. I need to complete the form every time we make a donation. We plan to make quarterly donations to the church and annual donations to other charities.

This donation is not counted as part of the taxable income we receive from the IRA, hence we lower our tax bill, and we will be able to take advantage of the new higher standard deduction when we file our taxes. Even though the donation does not count as taxable income, it does count toward satisfying the Required Minimum Distribution (RMD).

Please note I am only describing my understanding of this type of IRA withdrawal. I am not qualified to offer tax advice. You should consult a tax advisor or IRA manager. A web search for [Qualified Charitable IRA Distributions](#) will generate useful information.



**The Worship & Music Committee** has restored the custom of honoring new members of the family of God with a rose at the Altar. Those who wish to celebrate their new child or grandchild can contact committee chair, Barbara Oster at: beo6475@yahoo.com or via phone 668-7038. The cost is \$10.00 to be submitted to the church office, or labeled as such and placed in the collection plate. The rose and vase can be taken by the family after the 11:00 service on Sunday.

### **Musicality**

Another way to support your Bethlehem Music Department is to join one of the music groups. Depending on the one you join, you could be a part of services every 2 months, once a month, once every three weeks, or about every other week. They all have different schedules. What fits you best?

Your choices are steel pans, bells, Worship Team, and choir. They rehearse once a week with trained directors and really build up quite a comradery. It's fun. Think about it.



**Did you know Love In the Name of Christ has a Medical Equipment Loan Ministry?** If you, a friend or a family members needs a wheelchair, walker, cane, bathroom equipment or more, we can help! We have closet locations at Christ the King in Acme, Grace Episcopal mid-town, St. Patrick in the Grawn area and at the Love INC offices on East Front Street. **Call 941-5683** to speak with us about a loan or a donation of equipment. Thanks to our partnership you can have love and care at home!

### **Habitat for Humanity**

Habitat for Humanity is always looking for volunteers:

1. Skilled/Unskilled volunteers to serve as site coaches leading and teaching groups of volunteers in finish carpentry. No experience necessary.
2. Committee Members. Time commitment is about three hours a month. Committees needing members are Faith Relations, Family Selection and Events.
3. Re-Store volunteers / Donation drives / Pickup and Delivery
4. Lunch volunteers to feed construction site crews.
5. Deconstruction teams to salvage materials to be sold at the Re-Sale Store.

If you're interested in helping out, please call Michelle Reichert at 231-941-4663



## Health Concerns\*

***Richard Fernholz, Ron Hellenga, Nancy Smith,  
Margie Whitney, Jo Hasse, Mary Gordon, Tom Woodworth,  
Ellie Tacke, Vern and Bev Atwood, Thad Hellenga,  
Kate Holtfreter, Joyce Rombouts, Marlene Baesch,  
Virginia Fleming, Dan Morley and Harper Wiemerschlag***

**Grand Traverse Pavilions:** Virginia Fleming

**Joy Givers:** Hazel Lautner

**French Manor:** Mary Gordon, Joyce Rombouts

**Traverse Manor:** Margie Whitney, Juanita Lautner

**French Manor Lafranier:** Jo Hasse

**Boardman Lake Glens:** Inge Thomas

**Hospital Visits:** Please let the church office know if you are going into the hospital for a scheduled procedure or an emergency so Pastor Paul can visit you.



**BLC's PRAYER CHAIN** is always seeking partners in prayer.  
More volunteers are needed for this crucial ministry.  
For more information or to set the Prayer Chain in motion,  
call Jan Stretlien @ 947-3265 or email [jstretlen@gmail.net](mailto:jstretlen@gmail.net).

---

\*If you would like your name, or the name of a loved one, to appear on this list which appears here and in the weekly bulletin, please call the church office at 947-9880.

Are you checking for the latest BLC updates at: [www.bethlehemtc.org](http://www.bethlehemtc.org)?

You saw Norm and others take the photos...be sure you see them at [www.bethlehemtc.org](http://www.bethlehemtc.org)!

Good News...and great news...at [www.bethlehemtc.org](http://www.bethlehemtc.org)...

## OPTIONS FOR OUTSIDE ACTIVITIES:

**\*\*LOVE, INC:** offers a loan program of medical equipment: IE: wheelchairs, walkers, canes or bath equipment. Call 231-941-5683 for further information.

**\*\*FATHER FRED:** Needs drivers to pick up furniture from donors. Call Sue, the volunteer coordinator at 231-947-2055 Ext 134 or email [sbauer@fatherfred.org](mailto:sbauer@fatherfred.org) for more details if you could donate a small amount of your time.

**\*\*GRAND TRAVERSE BAY AREA STROKE CLUB:** Monthly Activities on May 16, June 13, and August 8. With questions, contact Melinda Hollands, LMSW at 231-935-6380.

**\*\*MANITOU WOODS SPRING CONCERT:** “Sojourn of Spring”-- Saturday, May 12: 7:30pm at Central United Methodist Church, Traverse City. Admission is Free. The free-will offering will benefit scholarships for music students at Interlochen Arts Academy.

**\*\*WORLD VISION: “6K for Water”:**—Sat, May 19: 10:00am—Medalie Part, 1910 S. Airport Rd, TC. \$50/adults & \$25/child 18 years and under. Each participant will wear a unique race bib with the photo of a child benefiting from clean water—and go home with a T-shirt and finisher medal. **Your \$50 also brings clean water to one person in need for life!!!** Contact Cynthia Wellington at 916-715-7319 and register at [www.teamworldvision.org/team/tc6k](http://www.teamworldvision.org/team/tc6k).

---

*Don't miss the last spring '30 Minute Journey' sessions, Sundays May 6 & 13!*

A YOUTH & ADULT EDUCATION OPPORTUNITY

T H E 3 0

M I N U T E

J O U R N E Y :

J E S U S & T E D







# BLC Contacts

## PLEASE NOTE SEVERAL ADDRESS UPDATES

### Church Office

Pastor Paul Busekist	<a href="mailto:paul.busekist@bethlehemtc.org">paul.busekist@bethlehemtc.org</a>
Admin. Asst. Sharon Weller	<a href="mailto:admin@bethlehemtc.org">admin@bethlehemtc.org</a>
Admin. Aide Renae Wells	<a href="mailto:admin@bethlehemtc.org">admin@bethlehemtc.org</a>
Mary Lou Deutsch/Phil Anderson	
Bookkeepers	<a href="mailto:bookkeeper@bethlehemtc.org">bookkeeper@bethlehemtc.org</a>
Sharon Weller, Music Director	<a href="mailto:sharon.weller@bethlehemtc.org">sharon.weller@bethlehemtc.org</a>
Alexis Steig, Youth & Outreach Director	<a href="mailto:alexis.steig@bethlehemtc.org">alexis.steig@bethlehemtc.org</a>
Meghan Denton, Christian Ed Coord.	<a href="mailto:meghan.denton@bethlehemtc.org">meghan.denton@bethlehemtc.org</a>
Website	<a href="http://www.bethlehemtc.org">www.bethlehemtc.org</a>

### Church Council

Phil Anderson, President	<a href="mailto:president.council@bethlehemtc.org">president.council@bethlehemtc.org</a>
Jim Parkinson, Vice President	<a href="mailto:vicepresident.council@bethlehemtc.org">vicepresident.council@bethlehemtc.org</a>
Tim Fox, Secretary	<a href="mailto:secretary.council@bethlehemtc.org">secretary.council@bethlehemtc.org</a>
Dave Pepler, Treasurer	<a href="mailto:treasurer.council@bethlehemtc.org">treasurer.council@bethlehemtc.org</a>
Shelly McAllister, Financial Sec.	<a href="mailto:secretary.council@bethlehemtc.org">secretary.council@bethlehemtc.org</a>
Jan Stretlien, Christian Care Giving	<a href="mailto:christiancaregiving.committee@bethlehemtc.org">christiancaregiving.committee@bethlehemtc.org</a>
Dianne Blair, Christian Ed.	<a href="mailto:christianeducation@bethlehemtc.org">christianeducation@bethlehemtc.org</a>
LoAnn VandeLeest, Evangelism	<a href="mailto:evangelism@bethlehemtc.org">evangelism@bethlehemtc.org</a>
Chuck Ardingo, Fellowship	<a href="mailto:fellowship.committee@bethlehemtc.org">fellowship.committee@bethlehemtc.org</a>
LoAnn VandeLeest, Membership	<a href="mailto:membershipevangelism.committee@bethlehemtc.org">membershipevangelism.committee@bethlehemtc.org</a>
_____, Personnel	<a href="mailto:personnel.committee@bethlehemtc.org">personnel.committee@bethlehemtc.org</a>
Carl Lehto, Property	<a href="mailto:property.committee@bethlehemtc.org">property.committee@bethlehemtc.org</a>
Barbara Wright, Stewardship	<a href="mailto:stewardship.committee@bethlehemtc.org">stewardship.committee@bethlehemtc.org</a>
Barbara Oster, Worship and Music	<a href="mailto:worship.committee@bethlehemtc.org">worship.committee@bethlehemtc.org</a>
Jodi Kelly, Youth/Y2A	<a href="mailto:youth.committee@bethlehemtc.org">youth.committee@bethlehemtc.org</a>

If you have an interest in serving on any of the above Committees,  
Please contact the Committee Chairperson(s).

BLC - Non assigned mtg. space, Conference Room, Entire BLC, Event Held Outside of BLC, Fellowship Hall, Gathering Space, Lower Room 2 May 2018 (Eastern Time)  
 , Lower Room 3, Lower Room 4, Nursery Room 1, Nursery Room 3, Nursery Room No #, Sanctuary, Youth Room

Sun	Mon	Tue	Wed	Thu	Fri	Sat
10am - Jubilee 11:30am - Chili Cook-Off 1pm - Drive My Way	10am - AIAnon-B 10am - Alanon-LR3 10am - Staff Meeting 3:30pm - Lessons/Weller 6pm - Sew Pieceful Quilters 6:30pm - Gamblers	9am - LWR Sewing Group 9am - Prayer Shawl 9am - Property Work Group 3pm - Lessons/Warne 5:30pm - Set-up AAUW 6pm - Christian Ed Mtg.	3pm - Lessons/Weller 5:45pm - Confirmation 7pm - Worship Team	3pm - Lessons/Warne 5:30pm - ACOA (LR) 6pm - BellChoir/Reh 6:30pm - Gamblers 7pm - Choir/Reh	Spring Blessings Sat-up 10am - AIAnon-B 10am - Alanon-LR3 2:30pm - RehearsalFrStJazz 5pm - Spring Blessings	5pm - Celebratel Worship
8:45am - Worship Service 9:45am - Sunday School 9:45am - WELCA Board 10:15am - Youth/Adult Ed 11am - Modern Worship - S 12:30pm - VBS Set Mtg. 12:30pm - Wor. & Mus. 7pm - THEO FINALE	10am - AIAnon-B 10am - Alanon-LR3 10am - Staff Meeting 1pm - Baby Pantry - 3:30pm - Lessons/Weller 6:15pm - Drive My Way 6:30pm - Gamblers	9am - LWR Sewing Group 9am - Prayer Shawl 9am - Property Work Group 10am - Finance-CR 12pm - Sarah Circle 3pm - Executive Committee 3pm - Lessons/Warne 6pm - Y2A Meeting (C)	9:30am - Quilters By the 2pm - Communion Party at 3pm - Lessons/Weller 5:30pm - Senior High Night 5:45pm - Conf.@FOV 6:15pm - Drive My Way 7pm - Worship Team	9am - Baby Pantry-FH 1pm - Rebecca/Ann Circle 3pm - Lessons/Warne 5:30pm - ACOA (LR) 6pm - BellChoir/Reh 6:15pm - Drive My Way 6:30pm - Gamblers 7pm - Choir/Reh	10am - AIAnon-B 10am - Alanon-LR3 2:30pm - RehearsalFrStJazz 7pm - Bridge-GS	5pm - Worship-S
8:45am - Worship Service 9:45am - Sunday School 10:15am - Youth/Adult Ed 11am - Modern Worship - S	10am - AIAnon-B 10am - Alanon-LR3 10am - Staff Meeting 3pm - Oster Small Group 3:30pm - Lessons/Weller 6pm - Sew Pieceful Quilters 6:15pm - Drive My Way 6:30pm - Gamblers	9am - LWR Sewing Group 9am - Prayer Shawl 9am - Property Work Group 2pm - Picture Dir. Photos 3pm - Lessons/Warne 6pm - Council Meeting 6:15pm - Drive My Way 7pm - Gray SG	2pm - Picture Dir. Photos 3pm - Lessons/Weller 5:45pm - Confirmation 6:15pm - Drive My Way 7pm - Worship Team	12:30pm - XYZ - Luncheon 2pm - Picture Dir. Photos 3pm - Lessons/Warne 5:30pm - ACOA (LR) 6pm - BellChoir/Reh 6:15pm - Drive My Way 6:30pm - Gamblers 7pm - Choir/Reh	10am - AIAnon-B 10am - Alanon-LR3 2pm - Picture Dir. Photos 2:30pm - RehearsalFrStJazz 6pm - Faith and Family	10am - Picture Dir. Photos 5pm - Worship-S
End of Sunday School Sunday School Game Day 8:45am - Worship Service 9:45am - Sunday School 9:45am - Taylor Conf. Party 11am - Confirm. Ceremony 11am - Modern Worship - S 12:30pm - Monroe Small	10am - AIAnon-B 10am - Alanon-LR3 10am - Staff Meeting 3:30pm - Lessons/Weller 6:15pm - Drive My Way 6:30pm - Gamblers	9am - LWR Sewing Group 9am - Prayer Shawl 9am - Property Work Group 3pm - Lessons/Warne 5pm - Book/Supper Club 5:30pm - Newcomers 6:15pm - Drive My Way	3pm - Lessons/Weller 6pm - Men's Group 6pm - VBS'18 Meeting 6:15pm - Drive My Way 7pm - Worship Team	9am - Baby Pantry-FH 1pm - Lehto SG 3pm - Lessons/Warne 5:30pm - ACOA (LR) 6pm - BellChoir/Reh 6:15pm - Drive My Way 6:30pm - Gamblers 7pm - Choir/Reh	10am - AIAnon-B 10am - Alanon-LR3 2:30pm - RehearsalFrStJazz 5pm - BLUES FINALE 5:15pm - Drive My Way	1pm - Drive My Way 5pm - Worship-S
8:45am - Worship Service 9:45am - Sunday School 11am - Modern Worship - S 1pm - Drive My Way	10am - AIAnon-B 10am - Alanon-LR3 10am - Staff Meeting 3:30pm - Lessons/Weller 6pm - Sew Pieceful Quilters	9am - LWR Sewing Group 9am - Prayer Shawl 9am - Property Work Group 3pm - Lessons/Warne 6:30pm - Newcomer's	3pm - Lessons/Weller 7pm - Worship Team	3pm - Lessons/Warne 5:30pm - ACOA (LR) 6:30pm - Gamblers	10am - AIAnon-B 10am - Alanon-LR3 2:30pm - RehearsalFrStJazz	5pm - Celebratel Worship

Because of the many activities here at BLC, this is only a partial calendar. You can view the entire calendar at <http://www.bethlehemtc.org/community-calendar> or call the office at 947-9880 for more information (and corrections/additions).