

JULY 2019



Bethlehem
LUTHERAN CHURCH

Traverse City, MI 49686
(231) 947-9880



Website: www.bethlehemtc.org
Email: bethlehem@bethlehemtc.org

Building Hours:
Monday – Thursday, 9am to 3pm

Office Hours
Monday – Thursday, 9am to 3pm

Worship Times:

Saturday: 5 pm Celebrate! Worship
Sunday: 8:30 am Traditional Worship
9:45 am Education Hour
11 am Modern Worship

Communion at all services

Follow the STAR to Bethlehem!

Our Mission...

“We journey with God, to serve with love”

Our Vision...

“As a community of believers journeying with God together, we at Bethlehem are called to serve with love by growing a premier youth ministry; enlivening Christian discipleship through lifelong learning, care, and spiritual formation; fostering a vibrant and inspiring worship experience; utilizing our natural setting and location for faithful creation care and outdoor ministry; and opening our doors always to be a “campus at the crossroads” for the mission and ministry of Jesus Christ.”



"We walk by faith
and not by sight."
-2 Corinthians 5:7



Dear friends,

When the apostle Paul talks about faith, he is talking about the "real deal." So many of us (myself included) profess our faith continually, but often fall short. We rely on other things, that we can see (material), and touch (money), and sense in other ways...But as for things that do not fit into one of our five sensory avenues, well...We pray for trust and belief, echoing that other famous phrase from the father seeking healing of Jesus in Mark's gospel ("Lord, I believe. Help my unbelief.")

But we have much to be thankful for, and much to believe - both seen and unseen - this summer as we enter into another "school year" together in Christ.

Our first thanksgiving is our new hire and new member welcome to Y2A and Bethlehem, Anne Slabaugh, who will become our Youth and Outreach Director. "Annie" will continue the work and job role as Alexis and will be shadowing Alexis from July 17th until Alexis' last day, July 31st. Annie will also be leading the games portion of VBS during the 2 weeks of her transition with Alexis. We look forward to her ministry and relationship building with our youth, young adults and congregation as we move forward together.

Speaking of moving forward, your Bethlehem Church Council has voted to invite Pastor Adam Miller-Stubbendick to BLC on the weekend of September 6-8th to work with Council, our Visioning team (Bethlehem Visions) and the congregation - to get us started with formulating a new, 3 to 5 year vision for the future. Pastor Adam brings a lot of experience to the conversation, having served as a senior pastor for several years, in single and multi-point (i.e. multi-church) congregations, as interim pastor at more than one site, and has experience walking congregations through the visioning process. He has also supervised interns, which will add to our discernment of whether or not we wish to become a "teaching congregation" in the near future.

Finally, we walk by faith and not (just) sight in September, as I will be doing a three-part sermon series on a topic we all may do, and think about, but not always both at the same time: Prayer.

I look forward to what the summer and fall will bring, and may God bring us a double-dose of vision, belief, and sense of discovery together in the coming weeks and months!

Together...in peace,

Pastor Paul

President's Corner

July 2019

My New Adventure at Bethlehem

It started when I was putting my toe in the water and before I knew it was taking a plunge! Funny how Bethlehem grows on you after you have been here a while. Now with the support of Council I am privileged to serve as Council President.

First, I would like to thank Jim Parkinson for his dedication and service as Council President for the last year. Jim was always available for help and support, it is and was greatly appreciated. I also want to thank the Church Council for providing me the opportunity to work with them as Council President. We have many new Council members (Paul Wiemerslage, Mark McPherson, Leonard Graf, Cindy Monroe and Jim Monroe stepping in as Financial Secretary) I look forward to a great year with all of them. I also want to let the Congregation know that I will do my best to represent Bethlehem Lutheran and invite you to share your thoughts and concerns with me.

As we begin Summer, the upcoming months will be filled with many activities and a few transitions. At the end of July, Alexis will begin a new chapter in her life, (hard to say goodbye) moving on to Central Europe and a Global Mission. Alexis has been a part of the Bethlehem family since mid 2017 and has done a remarkable job developing our Youth and Outreach Program and we all wish Alexis the very best as she travels the world. Anne Slabaugh was offered and accepted the position as the incoming Youth and Outreach Director. Anne will be working with Alexis for a few weeks in July as she moves into the Youth and Outreach position. Please extend a warm Bethlehem welcome to Anne.

VBS will take front and center the week of July 22 through the 26th, so get ready for a week of fun. Also, our Vision's Committee has been quietly working on a future plan for Bethlehem. In a few weeks, the Visions Committee will be seeking Congregational feedback. Please show your support by responding to the information they seek.

I am looking forward to a great year with everyone!

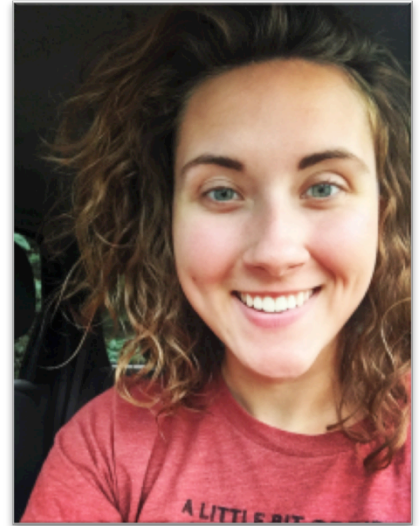
Thank you all for your support.

Chuck

Where is the time going?! Happy July, BLC!

UPCOMING JULY EVENTS

- July 4th, 6th, 7th—Parking Lot Fundraiser
- July 6th—12th: **Mission Trip to Marvell, AR!**
- July 21st: Final VBS Meeting
- July 22nd—26th: **VACATION BIBLE SCHOOL!**
- July 27th/28th—Special Guest Preaching (Me!)
- July 28th—Alexis Send-Off (between services)



Our two biggest summer youth events (bolded above) are happening this month! Woohoo! A few reminders...

Mission Trip: Please be praying for our high school students, Leonard Graf, and myself as we make the 28-hour trip to/from Marvell, Arkansas and serve in the community there. We will try to give you regular updates, and are still working on a presentation date...

Vacation Bible School: If you plan to volunteer, please let me know, and **come to the July 21st meeting!** If you just show up the day-of, we may not have the best fit position for you, and we want you to be prepared! If you aren't planning on volunteering, reconsider! This is an amazing week you won't want to miss out on. ☺ (*VBS runs from 8am-1pm, Monday through Friday, registration is free.*)

On a closing note, I am both excited and sad to be spending my last month here with all of you. I will have an 'official farewell' in the August edition of the STAR, and I hope you'll read it. You all mean so very much to me!

Pray with me: *Gracious Lord, let this month be one of faith formation, growth, community, and sunshine! Help us to open our eyes to the beauty of your creation this summer, and to enjoy the company of our loved ones in the midst of it. Call our servant hearts to your work, in whatever context that may be, and give us peace and rest when we need it. Thank you, Lord, for the many blessings we have here in Traverse City, and for this amazing community at Bethlehem. You are so good to us. Amen.*

Peace and Blessings,

Alexis Steig

*Director of Youth and Outreach
Bethlehem Lutheran Church, TC, MI
alexis.steig@bethlehemtc.org*

Christian Education News

July 2019



VACATION BIBLE SCHOOL (VBS):
CALLING ALL VOLUNTEERS!!!

VBS runs 7/22 to 7/26 this summer!

We have **just one more** full-group planning meeting
7/21 @ 12:30pm (*final* strategizing meeting)

Help is still needed!

Contact Alexis Steig or Laura Acker
to learn all the different opportunities for involvement!



Although we've concluded our official Sunday School season, there will still be children's activities this summer during the 11:00am late service, starting Sunday, June 2nd.

Children are invited to "The Well" during a brief portion of the service while the adults enjoy Pastor's message.

Sunday School needs teachers for all our classrooms:
Pre-K
K-2nd grade
3rd-6th grade

This very brief commitment runs between services approximately
9:45am-10:45am Sunday mornings,
and
simple lessons are pre-scripted with all the material.

Please prayerfully consider this service ministry
for our children.
Call Nancy Ammann 946-8433 for more details.



Christian Education would like to send their fondest wishes to
Alexis Steig
as she leaves Bethlehem this month for her new mission!

You've been such a blessing to our Bethlehem family,
and we cannot thank you enough
for journeying and serving with us.

WE WILL MISS YOU!!!

¹⁸ Then Jesus came to them and said,
"...¹⁹ Therefore go and make disciples of all nations...
²⁰ ...And surely I am with you always,
to the very end of the age."
(Matthew 28: 18-20, NIV)



Peace & Blessings, Alexis!

Bethlehem Visions Committee
June 2019

Great people, it seems, have a clear vision for their future. J. F. Kennedy

Visioning generates a common goal, hope, and encouragement. The process offers a possibility for fundamental change; gives people a sense of control; gives a group something to move toward; and generates creative thinking and purpose.

Your Bethlehem Visions Committee has been working towards new directions in ministry for Bethlehem. To better understand the needs of the congregation, we are developing a series of questions for the congregation to answer. This will give us a more empirical sense of support and direction that the congregation wishes to take. Our plan is to roll out the survey before the end of July and report back to you in August. Your participation will be critical as we face the "Forks in the Road" Pastor Paul spoke about in May.

Our committee is always looking to add new members to our group. If visioning is something you enjoy doing, give me a call and I would be happy to discuss this opportunity to serve with you.

Bethlehem blessings,
Phil Anderson
Committee chair

Reminder--All are welcome at our Council Meetings: Tuesday, July 16 at 6 pm. is our next meeting. There is a time slot for guests to speak at the beginning of the meeting.

DEADLINE FOR COUNCIL REPORTS IS WEDNESDAY, JULY 10

SEE THE BACK AD PAGE

In the 2019 budget, we created a couple of small line items for new revenue/contributions to address our tight budget moving forward. One of those ideas is hosting an "Ad Page" on the back page of the STAR newsletter. We have volunteers who will help make this happen and would like to get the word out that if you or someone you know would like publicity for an organization or business, we will offer 1/16th of a page for \$25/month or 1/8 page for \$50/month or 1/4 page for \$80. A parishioner with graphic design experience has graciously offered members a free, one time layout for their ad (i.e. the equivalent of about 20 minutes of work to get set up) and another member has offered to lay out the page. Our bookkeeper, Phil Anderson will track and document the contributions/donations to help us move forward. Please contact Renae Wells

616-204-8900/wellsrenae17411@gmail.com and/or Barbara Wright
231-735-3227/mzbright9006@yahoo.com in the office if you are interested.

Your Stewardship Committee

WOMEN OF BETHLEHEM - JULY, 2019



HELLO, JULY! WE'RE GLAD YOU'RE HERE!

The secret strength of a nation is found in the faith that abides in the hearts and homes of the country. --*Billy Graham*

what lies behind us and what lies before us are tiny matters compared to what lies within us. --*Ralph Waldo Emerson*

May we think of freedom - not as the right to do as we please - but as the opportunity to do what is right. --*Peter Marshall*

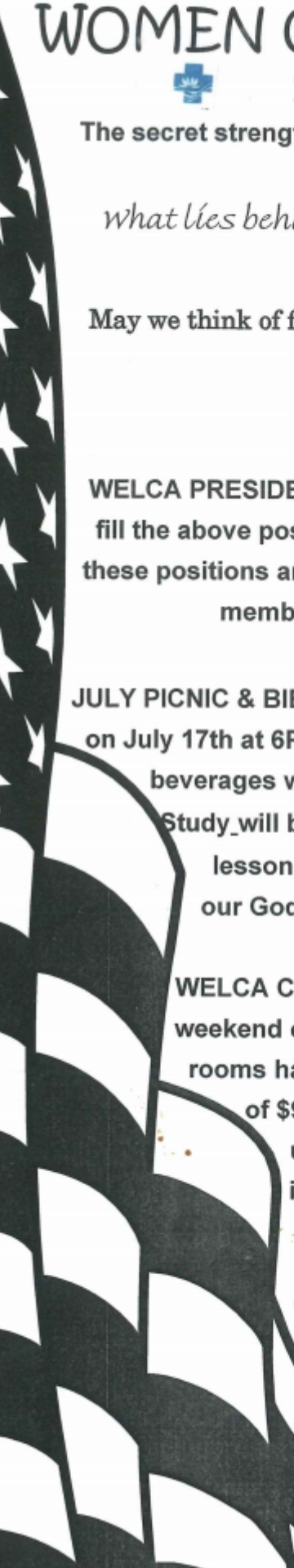


WELCA PRESIDENT, VICE-PRESIDENT & TREASURER NEEDED! We are still looking to fill the above positions on the WELCA Board. Please prayerfully consider filling one of these positions and contact Nancy Ammann for further information. Remember that as a member of Bethlehem you are automatically a member of WELCA.

JULY PICNIC & BIBLE STUDY: We will meet at the home of Barb Graf, 7429 E. Fouch Road on July 17th at 6PM. Bring a dish to pass and a lawn chair. Burgers, hot dogs and beverages will be provided. RSVP TO BARB AT 946-5120 BY JULY 10TH! The Bible Study will be taken from the July/August *Gather* magazine. This will be the second lesson on Esther: "Using our voices: When we, like Esther, nurture our faith, our God-given voices flourish." Contact Nancy Ammann for further details.

WELCA CONVENTION/RETREAT: The Fall Convention/retreat will be held on the weekend of September 27/28 at Zion Lutheran Church in Cadillac, MI. A block of rooms have been set aside at the Hampton Inn in Cadillac at a reduced price of \$93/breakfast buffet is included in price. Rooms will be held at this rate until August 15th. Rates may change after that date. Cost of the retreat is \$50. Final date for registration is Septmeber 15th. Contact your circle leader &/or check the kiosk for all the information.

They are asking us to bring items to be used as bingo prizes which will be given to the Samaratis Home in Cadillac.



COUNCIL SECRETARY'S COMMENTS

At our most recent Church Council meeting on June 18th we welcomed the new Council Members you as a Congregation elected at our June 9th Congregational Meeting. The new Council Members elected to a 3 year term are Katie Fox, Leonard Graf, Cindy Monroe, Mark McPherson and Paul Wiemerslage. Also, the major issue on the agenda was to nominate and approve the Council Members to various Council positions, they are as follows:

Chuck Ardingo, President
Leonard Graf, Vice President
Katie Fox, Treasurer
Tim Fox, Secretary
Jim Monroe, Financial Secretary
Open Position, Stewardship
Mark McPherson, Fellowship
Chuck Ardingo, Property
Open Position, Christian Education
Paul Wiemerslage, Y2A
Leonard Graf, Personnel
Cindy Monroe, Membership & Evangelism
Jan Stretien, Christian Care Giving
Nancy Downer, Worship & Music
Phil Anderson, Bethlehem Visions

Please join me in thanking these individuals for being Members of your Church Council.

Have a Blessed month of July!

Tim Fox, Council Secretary

May & YTD 2019 Financial Update

May income of \$30,762 was \$448 under budgeted income of \$31,210. May expense of \$30,198 was \$1,549 under budgeted expense of \$31,747. May was budgeted to have a deficit of \$537. The actual surplus was \$565. Combining the two numbers results in an improvement of \$1,102 against budget. May was pretty much a breakeven month from a cash flow perspective...a little less income and a little less expense than projected.

YTD income of \$168,577 is \$7,269 above budgeted income of \$161,308. YTD expense of \$162,317 is \$218 under budgeted expense of \$162,535. YTD we budgeted to have a deficit of \$1,227 as of the end of May. We ended May with a surplus of \$6,260 which means we are \$7,487 ahead of where we budgeted to be at this point in time. To further understand this number \$2,752 of the \$7,487 surplus is from higher weekly giving than budgeted. The remaining \$4,735 surplus is primarily from higher non-operating income (e.g., Grant Income, Star Ad Revenue, Building Use).

To net this out, after the first five months of the year we have a surplus cash flow of \$6,260. Our budget over the remaining seven months shows a deficit cash flow of \$5,981. Said another way, we have built up enough surplus over the first five months to offset the budgeted deficit over the remaining seven months and hopefully end the year in a breakeven position. This of course assumes our giving and non-operating income levels remain strong and no large unexpected expenses are incurred



Has taken its meetings into the Community. We now meet on the 4th Tuesday at 5:30 at the Cottage Café (During the summer only back at church.) You can choose a meal or just join in the discussion. ALL ARE WELCOME & bring a friend.

SPECIAL NOTE: There will not be a July meeting. The group will resume in August at the Cottage Café.

IN YOUR SPRING CLEANING, have you found some old water bottles you no longer use? Please donate them to support a local group which runs a school for 500 students in Haiti. Children at Anchor of Hope Haiti need water bottles so they do not all have to drink from a common cup. There is a box by member mailboxes for your donation of reusable bottles. Any questions contact Cindy Monroe, 231-941-0788.

Finger-Food Fellowship!

Any person or group can sign up to bring Cookies or a Finger Food (requiring only a napkin) to serve on Sunday. One tray needs to be ready after both Sunday Services with someone to clean up after late service. PLEASE WRITE DOWN YOUR DATE—there is no reminder system for this. A wonderful ministry for members, but also to welcome visitors. **EQUAL OPPORTUNITY VOLUNTEERS NEEDED.**



SHOP AT FAMILY FARE AND HELP RAISE MONEY FOR QUILTS!!

Shop at Family Fare, 905 E. 8th Street here in Traverse City (or at any Family Fare in the area) and help raise money for quilts!

*To warm others with more than a prayers,
save register receipts when you shop Family Fare!
Lutheran World Relief quilters need help from you.
Bring Family Fare receipts to us that you could do.
This helps raise money for the supplies it will take...
for fabric, thread, and shipping necessary for the quilts we make!*

Questions? Please call Betty Rutila at 231-947-1013



The Worship & Music Committee has restored the custom of honoring new members of the family of God with a rose at the Altar. Those who wish to celebrate their new child or grandchild can contact the church office. The cost is \$10.00 to be submitted to the church office, or labeled as such and placed in the collection plate. The rose and vase can be taken by the family after the 11:00 service on Sunday.

Musicality

Another way to support your Bethlehem Music Department is to join one of the music groups. Depending on the one you join, you could be a part of services every 2 months, once a month, once every three weeks, or about every other week. They all have different schedules. What fits you best?

Your choices are steel pans, bells, Worship Team, and choir. They rehearse once a week with trained directors and really build up quite a comradery. It's fun. Think about it.



Did you know Love Thy Neighbor has a Medical Equipment Loan Ministry? If you, a friend or a family members needs a wheelchair, walker, cane, bathroom equipment or more, we can help! We have closet locations at Christ the King in Acme, Grace Episcopal mid-town, St. Patrick in the Grawn area and at the Love Thy Neighbor office on East Front Street. **Call 941-5683** to speak with us about a loan or a donation of equipment. Thanks to our partnership you can have love and care at home!



Habitat for Humanity

Habitat for Humanity is always looking for volunteers:

- 1.Skilled/Unskilled volunteers to serve as site coaches leading and teaching groups of volunteers in finish carpentry. No experience necessary.
 - 2.Committee Members. Time commitment is about three hours a month. Committees needing members are Faith Relations, Family Selection and Events.
 - 3.Re-Store volunteers / Donation drives / Pickup and Delivery
 - 4.Lunch volunteers to feed construction site crews.
 - 5.Deconstruction teams to salvage materials to be sold at the Re-Sale Store.
- If you're interested in helping out, please call Michelle Reichert at 231-941-4663

Health Concerns*



The Power of Prayer

*Richard Fernholz, Nancy Smith, Hazel Lautner, Tom Miller, Margie Whitney,
Jo Hasse, Mary Gordon, Ruth Boerman, Ellie Tacke,
Bev Attwood, Roy Stowe, Priscilla Thompson,
Marlene Baesch, Alvin Kober, Bill Gourdie, Bill Gibson, Lynn Hoyt, Jacque
Rossfeld, Jan Waisanen, Bill Allen,
Molly Eastman, Harper Wiemerslage, Brenda Denoyer and Richard Oster*

Grand Traverse Pavilions: Bev Attwood, Bill Gourdie

Homebound: Hazel Lautner, Ruth Boerman

Traverse Manor: Margie Whitney

French Manor LaFranier: Jo Hasse, Roy Stowe

French Manor: Mary Gordon

Boardman Lake Glens: Inge Thomas, Bill & Dee Springer

Samaritas (Acme): Priscilla Thompson

Hospital Visits: Please let the church office know if you are going into the hospital for a scheduled procedure or an emergency so Pastor Paul can visit you.



BLC' s PRAYER CHAIN is always seeking partners in prayer.
More volunteers are needed for this crucial ministry.
For more information or to set the Prayer Chain in motion,
call Jan Stretlien @ 947-3265 or email jstretlien@gmail.net

*If you would like your name, or the name of a loved one, to appear on this list which appears here and in the weekly bulletin, please call the church office at 947-9880.

Are you checking for the latest BLC updates at: www.bethlehemtc.org?

You saw Norm and others take the photos...be sure you see them at www.bethlehemtc.org!

Good News...and great news...at www.bethlehemtc.org...

WELCOME TO OUR NEW PAGE

HONORING GOD'S CREATION

Interesting facts about Sleeping Bear National Seashore:

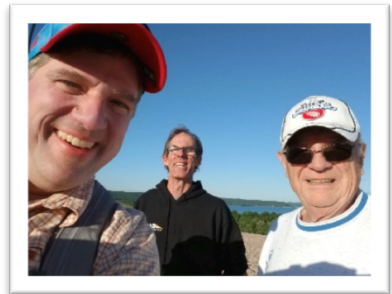
- ❖ It is called a seashore rather than a national park because it is considered our third coast;
- ❖ It was named the most beautiful place in America by ABC's Good Morning America;
- ❖ Sleeping Bear consists of 71,187 acres of forests, beaches, dune formation, glacial phenomena;
- ❖ It is both drivable and walkable;
- ❖ Friends of Sleeping Bear do volunteer work making trails and keeping the park clean.



There are many places besides church that we feel close to God. God speaks to us through his creation. We would like to make a sharing list in the September STAR where members feel in touch with God. Please send your name and special spot to admin@bethlehemtc.org or to Judy Strickland.

THIS PAGE IS WAITING FOR CONTRIBUTIONS FROM THE CONGREGATION. EX. Gardening, Recycling, Saving the Planet. Please email to admin@bethlehemtc.org and indicate you would like your ideas in the Monthly Star

Longest day hike Sleeping bear dunes June 20, 2019





New Council Members 2019



Leonard Graf
Vice President
Personnel



Katie Fox
Treasurer



Paul Wiemerslage
Y2A



Cindy Monroe
Membership &
Evangelism



Jim Monroe
Financial Secretary



Mark McPherson
Fellowship

BLC Contacts

PLEASE NOTE SEVERAL ADDRESS UPDATES

Church Office

Pastor Paul Busekist paul.busekist@bethlehemtc.org
Admin. Asst. Sharon Weller admin@bethlehemtc.org
Admin. Aide Barbara Oster admin@bethlehemtc.org
Bookkeeper, Phil Anderson bookkeeper@bethlehemtc.org
Sharon Weller, Music Director sharon.weller@bethlehemtc.org
Alexis Steig, Youth & Outreach Director alexis.steig@bethlehemtc.org
Website www.bethlehemtc.org

Church Council

Chuck Ardingo, President president.council@bethlehemtc.org
Leonard Graf, Vice President vicepresident.council@bethlehemtc.org
Tim Fox, Secretary secretary.council@bethlehemtc.org
Katie Fox, Treasurer treasurer.council@bethlehemtc.org
Jim Monroe, Financial Sec. Secretary.council@bethlehemtc.org
Phil Anderson, Bethlehem Vision Bookkeeper@bethlehemtc.org
Jan Stretlien, Christian Care Giving christiancaregiving.committee@bethlehemtc.org
, Christian Ed. christianeducation@bethlehemtc.org
Chuck Ardingo, Fellowship fellowship.committee@bethlehemtc.org
Cindy Monroe, Membership/Evangelism membershipevangelism.committee@bethlehemtc.org
Chuck Ardingo, Property property.committee@bethlehemtc.org
, Stewardship stewardship.committee@bethlehemtc.org
Nancy Downer, Worship and Music worship.committee@bethlehemtc.org
Paul Wiemerslage, Youth/Y2A youth.committee@bethlehemtc.org
Mark McPherson, At-Large

If you have an interest in serving on any of the above Committees,
Please contact the Committee Chairperson(s).

Lower Room 3, Lower Room 4, Nursery Room 1, Nursery Room 3, Nursery Room No #, Sanctuary, Youth Room

Sun	Mon	Tue	Wed	Thu	Fri	Sat
30	1	2	3	4	5	6
10am - AIAnon-B 10am - Alanon-LR3 10am - Staff Meeting 12pm - All Star DE 1 3pm - Lessons/Weller 6:30pm - Gambiers	9am - Property Work Group 12pm - All Star DE 1 6pm - Christian Ed Mtg.	9am - Property Work Group 12pm - All Star DE 1 6pm - Christian Ed Mtg.	3pm - Lessons/Weller 6pm - Steel Pan Rehearsal 6:45pm - Worship Team		10am - AIAnon-B 10am - Alanon-LR3	HS MISSION TRIP @
7	8	9	10	11	12	13
HS MISSION TRIP @ Marvell, AR 72366, USA	9am - Drive My Way 10am - AIAnon-B 10am - Alanon-LR3 10am - Staff Meeting 12pm - All Star DE 3pm - Lessons/Weller 6:30pm - Gambiers	9am - Drive My Way 9am - Property Work Group 11:30am - Finance-CR 12pm - All Star DE 12pm - Sarah Circle 3pm - Executive Committee 6pm - Y2A Mtg.	9am - Drive My Way 12pm - All Star DE 3pm - Lessons/Weller 6pm - Steel Pan Rehearsal 6:45pm - Worship Team	9am - Baby Pantry-FH 9am - Drive My Way 12pm - All Star DE 1pm - Rebecca/Ann Circle	10am - AIAnon-B 10am - Alanon-LR3 2:30pm - Front Street Jazz 6pm - Faith and Family	5pm - Worship-S
14	15	16	17	18	19	20
8:30am - Worship Service 11am - Modern Worship - S 6pm - Grandparents	9am - Drive My Way 10am - AIAnon-B 10am - Alanon-LR3 10am - Staff Meeting 12pm - All Star DE 2pm - All Star DE 3pm - Lessons/Weller 6:30pm - Gambiers	9am - Drive My Way 9am - Property Work Group 12pm - All Star DE 2pm - All Star DE 6pm - Council Meeting 7pm - Lautner SG @ at the	9am - Drive My Way 12pm - All Star DE 3pm - Lessons/Weller 6pm - Steel Pan Rehearsal 6:45pm - Worship Team	9am - Drive My Way 12pm - All Star DE	10am - AIAnon-B 10am - Alanon-LR3 2:30pm - Front Street Jazz	5pm - Worship-S
21	22	23	24	25	26	27
8:30am - Worship Service 11am - Christensen SG 11am - Modern Worship - S 12:30pm - VBS MTG FINAL 6pm - Grandparents	VBS 9am - Drive My Way 10am - AIAnon-B 10am - Alanon-LR3 10am - Staff Meeting 11:30am - Drive My Way 12pm - All Star DE	9am - Drive My Way 9am - Property Work Group 11:30am - Drive My Way 12pm - All Star DE	9am - Drive My Way 11:30am - Drive My Way 12pm - All Star DE 1pm - Johnson SG (Offsite) 3pm - Lessons/Weller 6pm - Steel Pan Rehearsal 6:45pm - Worship Team	9am - Baby Pantry-FH 9am - Drive My Way 12pm - All Star DE 1pm - Lehto SG	10am - AIAnon-B 10am - Alanon-LR3 2:30pm - Front Street Jazz	5pm - Worship-S
28	29	30	31	1	2	3
8:30am - Worship Service 10am - Alexis Send-Off 11am - Modern Worship - S 6pm - Grandparents	10am - AIAnon-B 10am - Alanon-LR3 10am - Staff Meeting 3pm - Lessons/Weller 6:30pm - Gambiers	9am - Property Work Group	3pm - Lessons/Weller 6pm - Steel Pan Rehearsal 6:45pm - Worship Team			



REYNOLDS JONKHOFF
Funeral Home & Cremation Services

305 Sixth St. 947-6347

www.reynolds-jonkhoff.com

For six generations... the Jonkhoff family and caring staff are the ones you can trust and depend on... today and tomorrow.

We've Moved!



We can help with Cemetery Burial, Natural Burial in the green section of the cemetery, Body Donation, and Cremation.

Cost friendly,
Locally owned and
not franchised

Be an informed consumer... Call to see why your friends and neighbors choose Life Story

231-941-9034

**400 Hammond Rd. W.,
Traverse City, MI**
East of Garfield and next to
Traversefield Industrial Park



Levon M. Seavolt, Owner/Manager



WE DELIVER!

**1217 E. FRONT ST.
231.929.2999**
**1294 W. SOUTH AIRPORT RD.
231.935.9355**



Jeremy W. Jackson, CFP®, ChFC®, FIC
Financial Associate
3116 Logan Valley Rd
Traverse City, MI 49684
231-486-6021
CA Insurance OJ07681

Connecting faith & finances for good.®

Certified Financial Planner Board of Standards Inc. owns the certification marks CFP® and CERTIFIED FINANCIAL PLANNER™ in the U.S. 27193 R6-16

BLOXSOM

ROOFING & SIDING

Generations of Knowledge and Trust

3733 Blair Townhall Road - Traverse City, MI 49684
Ph: 231.943.8781 - Fax: 231.943.9146
www.blossomroofing.com



1029 Carver Street
Traverse City, MI 49686
(231) 947-7670
Fax (231) 947-7199
www.deweesehardware.com



Phone: (231) 946-6515
Fax: (231) 946-1099



Our Locations:

232 E. State Street
Traverse City, MI 49684

200 N. Brownson Avenue
Kingsley, MI 49649

312 Pine Street
Elk Rapids, MI 49629

www.CovellFuneralHomes.com

THE COTTAGE

Comfortable food

Open daily 7am-10pm

472 Munson Ave 231-947-9261



DELIVERING ENERGY EFFICIENCY SOLUTIONS
Temperature Control, Inc.

1623 Northern Star Drive • Traverse City, MI 49696
Control Systems • Air Conditioning • Heating
Commercial • Industrial
Phone (231) 922-1862