



Bethlehem
LUTHERAN CHURCH

Traverse City, MI 49686
(231) 947-9880

SEPTEMBER 2018



Website: www.bethlehemtc.org
Email: bethlehem@bethlehemtc.org

Building Hours:

Monday – Thursday, 9am to 3pm

Office Hours

Monday – Thursday, 9am to 3pm

Worship Times:

Saturday: 5 pm Celebrate! Worship
Sunday: 8:45 am Traditional Worship
9:45 am Education Hour
11 am Modern Worship

Communion at all services

Follow the STAR to Bethlehem!

Our Mission...

“We journey with God, to serve with love”

Our Vision...

“As a community of believers journeying with God together, we at Bethlehem are called to serve with love by growing a premier youth ministry; enlivening Christian discipleship through lifelong learning, care, and spiritual formation; fostering a vibrant and inspiring worship experience; utilizing our natural setting and location for faithful creation care and outdoor ministry; and opening our doors always to be a “campus at the crossroads” for the mission and ministry of Jesus Christ.”



**"I am about to do a new thing; now it
springs forth..."**

**I will make a way in the wilderness and
rivers in the desert."**

-Isaiah 43:19 (NRSV)



Friends at Bethlehem, we are not only entering into a new "school year" this month as we kick off our 2018 "Rally Day" (or "God's Work. Our Hands.") Weekend...but we may be entering into a new chapter of staffing and ministry at Bethlehem starting one year from today. Exactly what we do is a bit of an unknown as we continue to research the options, but we do know for sure that our wonderful Director of Youth and Outreach, Alexis Steig, has been hoping to join the 2019-2020 team of YAGM (Young Adults in Global Mission) this time next year (and we wish her the very best on her application process this fall)...So, I believe the Holy Spirit is inviting us to re-imagine our staff looking into the coming year.

What will that vision look like? Perhaps taking on an intern mid-2019, possibly becoming an internship congregation on a regular (i.e. yearly) basis? Or perhaps another permutation of ministry staffing in the short and long term?

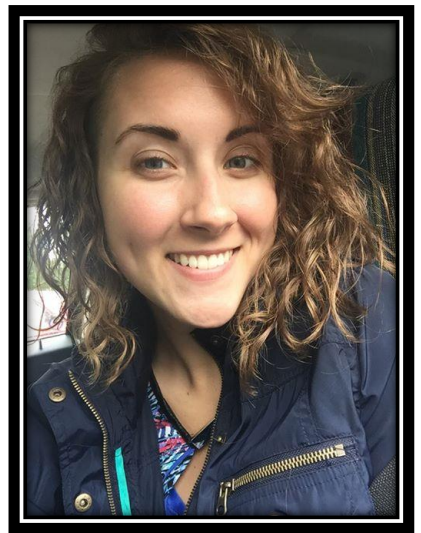
At the end of this month, at the **September 30th Jubilee luncheon (during the second half of our lunch slot) we invite you to our first "All Church Forum"** where we will listen to our revitalized Long Range Planning Committee (renamed "Bethlehem Visions") as they present to us a vision for the future...One step, perhaps toward many others.

The words above from Isaiah harken to something new. The actor is not us directly, but the Lord, through us. Even in the wilderness of new and unrealized potential, life and direction will emerge.

We hope to see you there.

In peace,
Pr. Paul

FROM THE DESK OF ALEXIS DIRECTOR OF YOUTH AND OUTREACH



Hello BLC Family!

September marks an important anniversary—it's officially been a **whole YEAR** that I've been with all of you here at Bethlehem! One year ago, I was just beginning to experience the love and compassion that all of you have in your hearts for the youth here—and I'm so glad for it! As we embark on the 2018-19 school year, we have a few important dates to remember for our returning programming!

KEY Kick-Off Dates:

Sunday School —September 9th @9:45am (GWOH/Rally Day!)

Adult Ed, 30 Minute Journey—September 16th (**tentative**)

THEO—September 12th @7pm

BLUES—October 26th @5pm

Confirmation (in partnership with FOV)—TBD

High School nights are now taking on a new format and dates will be announced on a monthly basis.

****A MASTER CALENDAR of Youth Events will be released soon, so keep your eyes peeled!**

September 9th is a big day, as it is **God's Work Our Hands Sunday!** (Formerly known as Rally Day.) We will have snacks and games for the kiddos, and this year (for our service project emphasis) we will be planting flowers by one of our Bethlehem signs! Kids are encouraged to wear appropriate 'gardening' clothes (don't want to ruin any nice suits or dresses!) It will be a great time to celebrate the beginning of the school year. ☺

And, as I'm sure some/most of you know, I will be taking over Meghan's duties temporarily (until December), so you'll be seeing a little more of me! I truly feel that God is calling me to serve the youth here in a larger capacity, however that may look!

To wrap up my article this month, I want to share a poem that I've found encouraging over the course of this summer, a goal to strive for. (Note: the 'she' pronoun is used, but it is applicable to all, regardless of gender!) Please reflect with me...

"She was the one who let Jesus interrupt her journey... She let him take over every thought and moment, so much to the point that she forgot to worry about what she was waiting for; because she fell so deeply in love travelling through life with Him... Anticipating every small and great thing He had in store." —*Morgan Harper Nichols*

Peace, and God's Blessings,

Alexis Steig

*Director of Youth and Outreach
Bethlehem Lutheran Church, TC*

A Very Morley Thank-You

Words cannot express my gratitude for all of my BLC family. The support you have given Dan and me over the last almost three years has been heart filled. All of the cards, flowers, teddy bears, meals, gifts, texts, prayers and emails have carried us through this very difficult cancer journey. It will never be forgotten.

Thank you to all who helped serve the 100+ people after the memorial service. Given you only had three days to prepare, you guys rocked it right out of the park. I received so many kind words from many people stating what a wonderful support system we have at Bethlehem.

I know you all will cherish memories of Dan for a very long time. He certainly left his mark on this church. He loved being a member here.

I have started the Dan Morley Memorial Fund, with the help of Northern Michigan Mountain Bike Association (NMMBA). This is in it's infancy of development right now. It is my hope to mature this into an endowment fund in his honor. As you all know, mountain biking was Dan's passion. I want to make this passion contagious through this memorial fund. The vision is for this fund to help put on "biking events," naming new trails "#bigdanstrong" and/or sponsoring mile markers on the new section of the Tart Trail System. If you would like to keep up with what is happening with the fund to keep Dan's memory alive, go to the NMMBA Facebook page or to their website nmmba.net to see updates regarding these things.

God has blessed my family with all of you and I thank Him for that every day.

Blessings to you all,

Betsy, Sam and Madelyn Morley

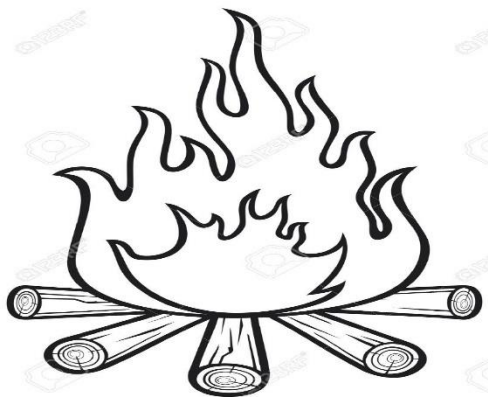


ANNUAL BLC FAMILY CAMPOUT
SEPTEMBER 14, 15, & 16
TURTLE LAKE CAMPGROUND
(NEAR BEULAH)

This large campground has a playground for the littles and a swimming area for those who are brave enough. You can rent a canoe or bring your own (kayaks welcome). Take a hike, go fishing, or just relax. Come for the weekend....make reservations online at turtlelakecampground.com or call 231-275-7353.

Come for Saturday evening meal at 6 pm. Bring a dish to pass.

Questions can be answered by Barb or Leonard Graf at 231-946-5120.



A Little Note: Once a month, (currently on the second Wednesday at 2pm) Pastor Paul, John and Jan Stretlien, and occasionally other folks, go to Bay Ridge to offer a Communion Party to the residents. This happens at 2:00 pm and there are songs, communion, a short sermon and fellowship with coffee and cookies after. The congregation is welcome to attend! 😊

Reminder---All are welcome at our Council Meetings: Tuesday, September 18 at 6 pm. There is a time slot for guests to speak at the beginning of the meeting,.

Treasurer Update – July 2018 Financial Results

July cash flow was negative with expense exceeding income by \$3,119. This was anticipated as we had a property tax payment of \$3,610 during the month. While July cash flow was negative, our YTD cash flow remains positive by \$12,234.

It is difficult to budget exactly when income and expenses will hit. When I look at our anticipated income and expense for the remaining five months, I estimate expenses exceeding income by \$14,063. This would leave us with a negative cash flow of \$1,412 (e.g., \$12,234 - \$14,063) come December 31st. This is not a big number and will certainly change as we go forward. As each month goes by we get a clearer picture of how year-end will look. So far so good and we remain on target, thanks in large part to the Close Budget Gap initiative bringing in \$6,880.

It is important we sustain a strong level of giving throughout the year to meet our goal of a balanced budget. Overall, we remain on track for a balanced budget.

Dave Peppler – Treasurer & Finance Committee Chair

Secretary's Council Highlight for August

My highlight for last month, July, was membership and at this month's, August, Council meeting membership, growth, vision and ministry all were at the forefront of our meeting. The morning after our meeting I read the following prayer, which I have as a bookmark from a Church that Louise and I belonged to in Ohio. (I changed the Church name at the end after we moved to Traverse City.) I feel this prayer speaks to all of us as we work together as a Bethlehem Family to ensure the continued growth of Bethlehem:

MORNING PRAYER

God, this is a new day. Thank you for that gift.

As you are building your Church in this world, I freshly commit myself to the role you have invited me to play. I am awestruck again today that you include me in this grand life-giving, world-transforming endeavor.

So today I joyfully offer you:

My Love, My Heart, My Talents, My Energy, My Creativity,
My Faithfulness, My Resources and My Gratitude.

I commit all of myself to the role you have assigned me in the building of Bethlehem Lutheran Church so that it may thrive in this world. I will bring my first and best. You deserve it. Your Church deserves it for your Church is the hope of the world.

Respectfully, Tim Fox, Council Secretary



WOMEN OF BETHLEHEM

HELLO, SEPTEMBER 2018!!



**Wake up every morning with the thought that
something wonderful is about to happen!**

UPCOMING EVENTS:

CIRCLE BIBLE STUDIES BEGIN: September is the beginning of the new year of Bible Studies. Those circles who take their study from the *Gather Magazine* are going to explore what repentance means for Lutheran Christians.

WELCA GENERAL MEETING: September 19th at 6:30PM
- potluck dinner - bring a dish to pass and your own complete table service. We will hold elections for Vice-President and Secretary. A program on making bows will be presented by our very own Marilyn Skay. **ANYONE AND EVERYONE** is invited and encouraged to attend! Call Nancy Ammann for information 946-8433

WOMEN'S RETREAT AT TUSTIN: September 28-29 There will be a group going down on Saturday morning for the day. If you would like to join us, please contact Nancy Ammann 946-8433. See flyer on kiosk for further information on this retreat.



Why Send Missionaries to Australia?

In 2016, the ELCA launched a site in Australia for the Young Adults in Global Mission (YAGM) program in partnership with the Lutheran Church in Australia. In a June 2018 [Living Lutheran article](#), read about the transformative experience young adult missionaries are having through the program and how it is challenging traditional notions of mission. Issues are available at the table by the entrance door.

LWF Welcomes Three New Churches

At the 2018 Lutheran World Federation (LWF) Council meeting, the council voted to welcome three new-member churches into the LWF: the Christ Lutheran Church (India), the United Evangelical Church in Cuba – Lutheran Synod and the Augustinian Lutheran Church of Guatemala. With these additions, the LWF now has 148 member churches in 99 countries. Read more about these [new-member churches](#).

<http://www.elca.org/Our-Work/Global-Church/Global-Mission/Companion-Synod-Relationships>

Outreach in Malaysia

The ELCA is accompanying the Lutheran Church in Malaysia in its efforts to provide food, training and education for leaders and community members of the Orang Asli villages, the indigenous communities of Malaysia. Malaysia is a majority Muslim nation, and the government withholds many rights and benefits from those who are not Muslim.

Normally, anyone born in Malaysia is considered Muslim, and as such they have greater access to basic amenities, but the Orang Asli people and other first-nation communities are not included. They are not born Muslim and thus are denied basic things like access to clean water and electricity. Supporting our Orang Asli neighbors in Malaysia helps give them access to these amenities, while respecting their right to religious freedom. Learn more about this [outreach initiative](#).

http://download.elca.org/ELCA%20Resource%20Repository/Global_Ministries_Malaysia.pdf

International Women Leaders Seminars - Unite Women Modern Reformers

One year ago, 22 women from nine nations gathered in Wittenberg, Germany, to take part in the sixth International Women Leaders seminar. Since 2014, almost 100 women from 40 countries have participated in these opportunities to exchange ideas and perspectives on their culture and faith, a platform where collective ideas can grow and flourish. [Learn more about the International Women Leaders program today](#).

<http://www.elca.org/Our-Work/Global-Church/Global-Church-Sponsorship/Supporting-International-Women-Leaders>



BETHLEHEM LUTHERAN CHURCH

"ART & CRAFT SHOW"

SATURDAY, OCTOBER 13, 2018

9:00a.m. – 3:00p.m.

1050 Peninsula Dr., Traverse City, Mi. 49684

**Featuring 40 local & original handcrafted
artists and crafters**

The "Art & Craft Sale" at Bethlehem Lutheran Church

GOALS

1. Organize a fund raiser for the Worship and Music Committee and Fellowship Committee. All vendor rental space, table rentals and food sales will go to our music and fellowship programs. We encourage other committees from our church to participate in this fundraiser. As an example, the Youth/Y2 Committee set up a bake sale table to raise funding for their trips and programs during the MOM2MOM SALE last September and had an excellent response from the congregation and the sale.
2. Provide a community event which will give more exposure to Bethlehem's ministries and bring new faces in our church.

I will be the main contact person for the vendors and committees involved. I can be reached at 231- 499-2816 for any questions or concerns. Vendor information and contracts will be available at the church office or through my email at jpleiby@charter.net. Sincerely, Patty Leibenguth



Update on Book Supper Club: We will be moving the start time for our meetings to 5:30 to accommodate the schedules of those who still work and cannot be in at 5:00. The group voted that we will TRY a meeting at the Cottage Café (located at 420 Munson Ave.) on September 25. We were able to reserve the large room there. We will be ordering small menu items so as not to tie up too much time with eating. We will vote at this meeting whether to continue gathering at the restaurant or try something else. Russ and Carole Luttinen are retiring from set-up/clean-up. We thank them for their years of service! ☺ The book we are reading for September is "Lilac Girls" by Martha Hall Kelly.

XYZ—PLEASE NOTE SCHEDULE CHANGE

A number of folks in our group have discussed moving our gatherings to the 3rd Thursday, September-May: Noon- 2. We think we would get more people involved plus Friday's are often busy even for old folks. Our first event for fall will be September 20 at Noon.

CCC NEEDS YOU: After five years of partnering with the small groups to bring the congregation sweet treats each Sunday morning, Marilyn Skay and Meredith Busekist are hanging up their aprons. If anyone has an interest in picking up the whisk and coordinating with small group leaders for Cookies, Coffee, and Conversation (CCC), please reach out to one of them, and they will gladly share the recipe for success with you....and please note that while you might say it doesn't "pay well", we guarantee you'll be rolling in the dough!:)---With love, cookies, and a little urgency, Meredith & Marilyn

THANK YOU---THANK YOU and keep up the good work. Please continue to turn in your Oleson's receipts! Bethlehem just received a check for \$282.28.



SHOP AT FAMILY FARE AND HELP RAISE MONEY FOR QUILTS!!

Shop at Family Fare, 905 E. 8th Street here in Traverse City (or at any Family Fare in the area) and help raise money for quilts!

*To warm others with more than a prayers,
save register receipts when you shop Family Fare!
Lutheran World Relief quilters need help from you.
Bring Family Fare receipts to us that you could do.
This helps raise money for the supplies it will take...
for fabric, thread, and shipping necessary for the quilts we make!*

Questions? Please call Betty Rutila at 231-947-1013

WELCOME TO OUR NEW PAGE

"We Care for God's Creation"

This page will be a monthly feature page in the Star dedicated to taking care of our environment and appreciating the bounty that God has given us. We are going to be looking for your contributions. Help us highlight our gratitude to Him from whom flows all blessings. Please contact Judy Strickland with your ideas or the church office.

TEACHING CHILDREN ABOUT PLANTING AND WAYS TO PRESERVE OUR ENVIRONMENT VBS 2018



You don't have to do things like this to be a good steward of the environment. Some of us take our stewardship to a higher level. By simply picking up a wrapper on the street or a plastic bottle in the weeds when on a hike or changing a trash bag in a city park is a good way the help the Earth. If each person picked up one piece of litter a day, the world would be a sparkling and wonderfully clean place----Norm Fred

Mark your calendars for September 30. Get your recyclables ready for **"Clean Up Green Up"** which is being held at West High School parking lot from 9am-3pm. You will find more information on facebook under "Clean Up Green Up" as to what items we actually accept. You can contact Renae Wells at wellsrenae17411@gmail.com with questions.



The Worship & Music Committee has restored the custom of honoring new members of the family of God with a rose at the Altar. Those who wish to celebrate their new child or grandchild can contact the church office. The cost is \$10.00 to be submitted to the church office, or labeled as such and placed in the collection plate. The rose and vase can be taken by the family after the 11:00 service on Sunday.

Musicality

Another way to support your Bethlehem Music Department is to join one of the music groups. Depending on the one you join, you could be a part of services every 2 months, once a month, once every three weeks, or about every other week. They all have different schedules. What fits you best?

Your choices are steel pans, bells, Worship Team, and choir. They rehearse once a week with trained directors and really build up quite a comradery. It's fun. Think about it.



Did you know Love In the Name of Christ has a Medical Equipment Loan Ministry? If you, a friend or a family members needs a wheelchair, walker, cane, bathroom equipment or more, we can help! We have closet locations at Christ the King in Acme, Grace Episcopal mid-town, St. Patrick in the Grawn area and at the Love INC offices on East Front Street. **Call 941-5683** to speak with us about a loan or a donation of equipment. Thanks to our partnership you can have love and care at home!

Habitat for Humanity

Habitat for Humanity is always looking for volunteers:

1. Skilled/Unskilled volunteers to serve as site coaches leading and teaching groups of volunteers in finish carpentry. No experience necessary.
 2. Committee Members. Time commitment is about three hours a month. Committees needing members are Faith Relations, Family Selection and Events.
 3. Re-Store volunteers / Donation drives / Pickup and Delivery
 4. Lunch volunteers to feed construction site crews.
 5. Deconstruction teams to salvage materials to be sold at the Re-Sale Store.
- If you're interested in helping out, please call Michelle Reichert at 231-941-4663



Health Concerns*

Richard Fernholz, Nancy Smith, Richard Oster, Hazel Lautner, Margie Whitney, Jo Hasse, Mary Gordon, Ruth Boerman, Linda Davis, Juanita Lautner, Ellie Tacke, Vern and Bev Attwood, Marilyn Achard, Kate Holtfreter, Karen Dorvinen, Joyce Rombouts, Richard Spencer, David Mann, Marlene Baesch, Alvin Kober, Mandy Hitesman, Dee Springer, and Harper Wiemerschlage

Grand Traverse Pavilions: Ruth Boerman, Vern & Bev Attwood,

Joy Givers: Hazel Lautner/ **Culver Meadows:** Karen Dorvinen

Traverse Manor: Margie Whitney, Juanita Lautner

French Manor LaFranier: Jo Hasse, Joyce Rombouts

French Manor: Mary Gordon/ **Medilodge GTC:** David Mann

Boardman Lake Glens: Inge Thomas

Hospital Visits: Please let the church office know if you are going into the hospital for a scheduled procedure or an emergency so Pastor Paul can visit you.



BLC's PRAYER CHAIN is always seeking partners in prayer.

More volunteers are needed for this crucial ministry.

For more information or to set the Prayer Chain in motion, call Jan Stretlien @ 947-3265 or email jstretlien@gmail.net

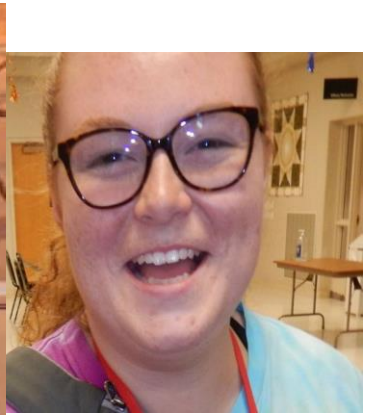
*If you would like your name, or the name of a loved one, to appear on this list which appears here and in the weekly bulletin, please call the church office at 947-9880.

Are you checking for the latest BLC updates at: www.bethlehemtc.org?

You saw Norm and others take the photos...be sure you see them at www.bethlehemtc.org!

Good News...and great news...at www.bethlehemtc.org...







BLC Contacts

PLEASE NOTE SEVERAL ADDRESS UPDATES

Church Office

Pastor Paul Busekist	paul.busekist@bethlehemtc.org
Admin. Asst. Sharon Weller	admin@bethlehemtc.org
Admin. Aide Renae Wells	admin@bethlehemtc.org
Bookkeeper, Phil Anderson	bookkeeper@bethlehemtc.org
Sharon Weller, Music Director	sharon.weller@bethlehemtc.org
Alexis Steig, Youth & Outreach Director	alexis.steig@bethlehemtc.org
Meghan Denton, Christian Ed Coord.	meghan.denton@bethlehemtc.org
Website	www.bethlehemtc.org

Church Council

Jim Parkinson, President	president.council@bethlehemtc.org
Chuck Ardingo, Vice President	vicepresident.council@bethlehemtc.org
Tim Fox, Secretary	secretary.council@bethlehemtc.org
Dave Peppler, Treasurer	treasurer.council@bethlehemtc.org
Shelly McAllister, Financial Sec.	Secretary.council@bethlehemtc.org
Phil Anderson, Bethlehem Vision	Bookkeeper@bethlehemtc.org
Jan Stretlien, Christian Care Giving	christiancaregiving.committee@bethlehemtc.org
Barbara Graf, Christian Ed.	christianeducation@bethlehemtc.org
LoAnn VandeLeest, Evangelism	evangelism@bethlehemtc.org
Chuck Ardingo, Fellowship	fellowship.committee@bethlehemtc.org
LoAnn VandeLeest, Membership	membershipevangelism.committee@bethlehemtc.org
LoAnn VandeLeest, Personnel	personnel.committee@bethlehemtc.org
Chuck Ardingo, Property	property.committee@bethlehemtc.org
Barbara Wright, Stewardship	stewardship.committee@bethlehemtc.org
Nancy Downer, Worship and Music	worship.committee@bethlehemtc.org
Barbara Graf, Youth/Y2A	youth.committee@bethlehemtc.org

If you have an interest in serving on any of the above Committees,
Please contact the Committee Chairperson(s).

BLC - Non assigned mtg. space, Conference Room, Event Held Outside of BLC, Fellowship Hall, Gathering Space, Lower Room 2 Sep 2018 (Eastern Time - New York)
 , Lower Room 3, Lower Room 4, Nursery Room 1, Nursery Room 3, Nursery Room No #, Sanctuary, Youth Room

Sun	Mon	Tue	Wed	Thu	Fri	Sat
26	27	28	29	30	31	1
8:45am - Worship Service 9:45am - Membership & 9:45am - WELCA Board 11am - Modern Worship - S 12:30pm - Wor. & Mus.	10am - AIAnon-B 10am - AIAnon-LR3 10am - Staff Meeting 3pm - Lessons/Weller 6:30pm - Gamblers	9am - LWR Quilting 9am - Prayer Shawl 9am - Property Work Group 3pm - Lessons/Warner 6pm - Christian Ed Mtg. 6:30pm - Evang/Memberahi	3pm - Lessons/Weller 6pm - Steel Pan Rehearsal 7pm - Worship Team	3pm - Lessons/Warner 5:30pm - ACOA (LR) 6:15pm - Bell Choir 7pm - Choir Rehearsal	Lozitsky Rehearsal 5:30 10am - AIAnon-B 10am - AIAnon-LR3	Lozitsky Wedding - 1:00 5pm - Worship-S
2	3	4	5	6	7	8
GWONH Weekend 8:45am - Worship Service 9:45am - GWOH Activities 11am - Modern Worship - S	10am - AIAnon-B 10am - AIAnon-LR3 10am - Staff Meeting 3pm - Lessons/Weller 8pm - Sew Pieciful Quilters 6pm - Spiritual Gifts 8:15pm - Apprentice 8:30pm - Gamblers	9am - LWR Quilting 9am - Prayer Shawl 9am - Property Work Group 10am - Baby Pantry Set Up 10am - Finance-CR 12pm - Sarah Circle 3pm - Executive Committee 3pm - Lessons/Warner 6pm - Y2A Meeting (C)	2pm - ALS Support Group 2pm - Communion Party-BR 3pm - Lessons/Weller 6pm - Steel Pan Rehearsal 7pm - THEO 7pm - Worship Team	9am - Baby Pantry-FH 1pm - Rebecca/Ann Circle 3pm - Lessons/Warner 5:30pm - ACOA (LR) 6:15pm - Bell Choir 7pm - Choir Rehearsal	10am - AIAnon-B 10am - AIAnon-LR3 6pm - Faith and Family 7pm - Bridge-GS	5pm - Worship-S
15	17	18	19	20	21	22
8:45am - Worship Service 9:45am - Mary Lou's 9:45am - Sunday School 11am - Modern Worship - S 2pm - Christensen Small 5:30pm - HSNight	10am - AIAnon-B 10am - AIAnon-LR3 10am - Staff Meeting 3pm - Lessons/Weller 6pm - Spiritual Gifts 8:15pm - Apprentice 8:30pm - Gamblers	9am - LWR Quilting 9am - Prayer Shawl 9am - Property Work Group 3pm - Lessons/Warner 6pm - Council Meeting 7pm - Gray SG 7pm - Lautner SG @ at the	3pm - Lessons/Weller 4:30pm - Set-up WELCA 6pm - Steel Pan Rehearsal 6:30pm - Conf. Parent Mtg 6:30pm - WELCA General 7pm - Worship Team	12pm - XYZ 3pm - Lessons/Warner 5:30pm - ACOA (LR) 6:15pm - Bell Choir 7pm - Choir Rehearsal	10am - AIAnon-B 10am - AIAnon-LR3	Funeral - Ellie Long 5pm - Worship-S
23	24	25	26	27	28	29
8:45am - Worship Service 9:45am - Sunday School 11am - Modern Worship - S	10am - AIAnon-B 10am - AIAnon-LR3 10am - Staff Meeting 3pm - Lessons/Weller 6pm - Sew Pieciful Quilters 6pm - Spiritual Gifts 8:15pm - Apprentice 8:30pm - Gamblers	9am - LWR Quilting 9am - Prayer Shawl 9am - Property Work Group 3pm - Lessons/Warner 5pm - Book/Supper Club	3pm - Lessons/Weller 6pm - Man's Club 6pm - Steel Pan Rehearsal 7pm - Worship Team	9am - Baby Pantry-FH 3pm - Lessons/Warner 5:30pm - ACOA (LR) 6:15pm - Bell Choir 7pm - Choir Rehearsal	10am - AIAnon-B 10am - AIAnon-LR3	5pm - No Worship
30	1	2	3	4	5	6
10am - Jubilee Sunday 11am - Jubilee Luncheon						

Because of the many activities here at BLC, this is only a partial calendar. You can view the entire calendar at <http://www.bethlehemtc.org/community-calendar> or call the office at 947-9880 for more information (and corrections/additions).