

SPECIAL STEWARDSHIP EDITION-OCTOBER 2018



Bethlehem
LUTHERAN CHURCH

Traverse City, MI 49686
(231) 947-9880



Website: www.bethlehemtc.org
Email: bethlehem@bethlehemtc.org

Building Hours:

Monday – Thursday, 9am to 3pm

Office Hours

Monday – Thursday, 9am to 3pm

Worship Times:

Saturday: 5 pm Celebrate! Worship
Sunday: 8:45 am Traditional Worship
9:45 am Education Hour
11 am Modern Worship

Communion at all services

Follow the STAR to Bethlehem!

Our Mission...

“We journey with God, to serve with love”

Our Vision...

“As a community of believers journeying with God together, we at Bethlehem are called to serve with love by growing a premier youth ministry; enlivening Christian discipleship through lifelong learning, care, and spiritual formation; fostering a vibrant and inspiring worship experience; utilizing our natural setting and location for faithful creation care and outdoor ministry; and opening our doors always to be a “campus at the crossroads” for the mission and ministry of Jesus Christ.”



Friends at Bethlehem,

This month I am sharing my “page” for two reasons: (1) because I’ve already written a LOT in the coming pages ☺ and (2) I wanted to empower our wonderful Stewardship Committee chair Barbara Wright (see section below) to share the key concepts of our Stewardship campaign: Coming Together to begin the next century (i.e. 100 years) as a congregation, and trying something bold... That involves reaching out to our neighbors and welcoming them to become part of this journey with us, and also uniting behind a new strategy for depth and growth at BLC: becoming a “teaching congregation”. The rest I will leave to Barbara, to the notes from our “All Church Forum” (found in the next few pages), and to the inspired words of our Temple Talk-ers these next few weeks. Something exciting is happening at Bethlehem. Can’t wait to walk with you!

—Pr. Paul

Dear Bethlehem Friends,

We would like you to read the following synopsis of the All Church Forum and hopefully find it exciting with possibilities to inspire and grow our faith and teaching community at BLC.



Wouldn't it be wonderful if TOGETHER we came up with 100 ways to make BLC even more welcoming and a center for faith based learning and growth?

You might have a small idea- or large- that you have been thinking of doing or sharing, but find it hard to get started. There are a lot of helpful people around you- just ask! Maybe it's bringing a friend to church, maybe it's bringing cookies for social hour, maybe it's seeking out new visitors and asking them for coffee or lunch. Perhaps you are musically Inclined, or could help with AV or Altar Guild. Maybe you sew- or are handy in the garden. Maybe it's some extra prayers for the sick - or being a caring visitor. Maybe it's finding just a little time in your busy schedule to pray for BLC on its journey forward.

Whatever you discover in your prayers as to how you can contribute your time, talents and possessions will be so meaningful and appreciated, and yes, impactful.

Remember, it will take all of us, TOGETHER, as Stewards of our resources, to not only sustain BLC today, but plant the seeds to grow a foundation for a continued legacy of welcoming, teaching and nurturing people of faith in the next 100 years.

Blessings and Peace,
Barbara Wright, Stewardship Chair.

Slide 1

Bethlehem: Our Shared Vision
(Planting a Seed)

September 30, 2018
All Church Forum

This is our first “All Church Forum” and one tied to our original 2012-2022 vision six years ago. The image back then was five overlapping circles (or vision focus areas) with a growing church in the center.

Today’s image is one of planting new seeds for growth - notably in our staffing and sense of welcome and

Slide 2

■ **Matthew 13:31-32**

■ ³¹ Jesus put before them another parable: “The kingdom of heaven is like a mustard seed that someone took and sowed in his field; ³²it is the smallest of all the seeds, but when it has grown it is the greatest of shrubs and becomes a tree, so that the birds of the air come and make nests in its branches.”

A famous parable, this “mustard seed” of Christ’s gospel among us is symbolic of our efforts moving forward, whether big or small...but always impactful.

Now is the time to inspire and plant.

Slide 3

Our first project: to fill a hole

Three Y2A Directors,
2013-Present:

- Continuity
- Personality
- Breadth of Ministry
- (Is this model sustainable?)



Our journey with a Y2A Director thus far has led us to prioritize having an extra person on staff to augment and assist the pastor.

Will Alexis’ planned departure (to pursue new ministry with Young Adults in Global Mission, or YAGM) inspire us to change our ministry for staffing as well?

Slide 4

Whoa, back up, Planters!

(Who – currently - does what, and how?)

Pastor Paul:

- What does your week look like?
- *A wedding, three funerals and a baptism: 20 hours of prep and presence (sermons, meeting with families)
- Administration: staff & committee mtgs, worship prep and one-on-ones: 10 hours
- Counselling and giving to those in need: 2-3 hours
- Regular sermon preparation: 5-10 hours
- (in)formal conversations with people: 3-5 hours
- Other office Work: 5-8 hours
- Weekend worship & presence at church: 8 hours
- Tangential music and other leadership: 1-2 hours

Before we tackle our “auxiliary ministry” position needs (i.e. Y2A Director or other), perhaps we should look at how Pr. Paul spends his time each week.

Note: when exceptional weeks (see asterisk* areas on the slide) do NOT occur, his office hour or visitations often compensate for that time difference.

Slide 5

Whoa, back up, Planters!

(Who – currently - does what, and how?)

Pastor Paul:

- Worship/Preach
- Pastoral Care
- Administration
- Building Leaders*
- Vision/Mission
- Small Grp. Leading

Y2A Director:

- Youth
- Young Adult Min.
- Outreach
- C.Ed (separate?)
- Confirmation

Currently, Pr. Paul shares the general tasks of ministry with Alexis, as follows (to the left.)

Whatever staffing scenario we choose (“post-Alexis”) two things are clear: (1) the pastor needs consistent and qualified help on staff, and (2) we need to retain a separate, (lightly) part-time Christian Education position, estimated at 7 hours/week.

Slide 6

What if we planted differently?

(Could a ministry intern cover the bases?)

Pastor Paul:

- Worship/Preach lead
- Pastoral Care
- Administration
- Building Leaders*
- Vision/Mission
- Youth co-lead

Intern:

- Worship/Preach help
- P. Care assist
- Building Leaders
- Focus area/s
- Small Grp Lead.
- Teach/Learn min.

If Bethlehem returned to the internship configuration we had in the 1970s and 80s, Pr. Paul could share ministry duties with an intern and look to volunteers to team up for critical ministries like Y2A (Youth and Young Adults). To understand whether it is possible to “insource” ministries with a staff/volunteer team (once handled solely by staff), we need only look to our successful VBS this

Slide 7

Pruning and Grafting

(What does pastor give up, and take on?)

Pastor Paul:

- Gives up some of his preaching, small group leading and pastoral Care
- Takes on part of youth work, with intern and volunteer team

Intern:

- Takes on some of Confirmation, preaching and leading worship, etc
- Becomes part of a new energy of teaching and learning at BLC

Pr .Paul would take on the role of intern supervisor, a ministry both for Bethlehem and (in some ways) for the ELCA, helping form a new minister for the larger church, and sharing that teaching role with you!

This means Pr. Paul may need to “let go of” some preaching/pastoral responsibilities to free up his schedule, and also help the intern to learn and grow by sharing leadership.

Slide 8

What would it mean to be a Teaching parish/congregation?

(Who reaps, who sows?)

For the larger church:

- They invest their students in us
- We support leaders for today & tomorrow



For this congregation:

- We receive eager learners and qualified leaders with theological minds and hearts
- BLC transforms >> a new place of teaching

This is the MOST EXCITING SLIDE of this PowerPoint presentation.

Why? Because when (y)our church becomes an internship site, that process creates teachers and students of us all! Every day and every week, we become part of something bigger, and we all learn and grow in our faith together.

Slide 9

What would it take to plant this field?

(A fallow field gets turned...)

Modeling on the 2010 Challenge Fund:

- \$26k planted seeds for eventually making up 20% of the Y2A Director salary for 2016-now
- This fund runs out tomorrow, Oct 1, 2018

Seeding a new Challenge:

- Stewardship leading a challenge for \$75-100k to seed an intern for next 3-5 years
- Beyond 5 years? Intern site, 2nd pastor, etc?

Our first Youth/Family Challenge Fund was in 2010 raised an impressive \$26,000. Over the last few years, we have stewarded that fund by supplementing a small but significant portion of our Y2A Director's salary (approx. \$4-8,000/year). That fund has run out. We believe the Spirit is calling us to renew that challenge with a new one, to the tune of \$75-100k, to help “seed” new leadership

Slide 10

What could I do as a member of this congregation ("I'm just one plant of many.")

Modeling on our past successes (125th):

- Scatter the seed
- Invite and gather
- Follow up and water/feed
- Pray for God's pruning of weeds/branches*
- Encourage the light
- Help the new teams forming
- Attach to the "true vine" (Jesus!!!)

Oftentimes a vision like this can seem daunting or even overwhelming...But it is primarily inspiring & full of new potential.

You are part of the new "100"...

- **100 new years of Bethlehem**
- **100 new faces in the pews in next 5 yrs**
- **100 new seeds of discipleship at BLC**

Slide 11 **100 new ways to fund future**

Q & A:

Here are a few questions (and answers) that followed our time together:

Q. What might Bethlehem look like in 5 or more years with this new "teaching congregation" strategy?

A. Though it's impossible to say, of course, there is a good chance that Bethlehem could either become a more permanent "teaching site" or if we grow significantly we could either take on additional ministry personnel (like a youth minister, second pastor, or some other staffing configuration.)

Q. Is Alexis aware of, and ok with, this process?

A. Yes. This new visioning began over a year ago, as soon as we heard that Alexis was discerning whether she wanted to go into the ministry in a new way – via seminary, YAGM, or something else next year. We honor her journey of discernment and the calling of The Spirit...though we secretly hope Alexis stays as long as possible! ☺

Q. Will gaps in ministry be possible with an intern?

A. Possibly, but those gaps will almost certainly be filled with fresh perspective, as our church transforms in ways we simply cannot know, by new leaders from within.

Q. Would a one-year internship provide good consistency at BLC?

A. Yes and no. One year gives ample time for an intern to "dive right in" and help with tasks and learning...but losing a good intern would be part of a year's rhythm and growing pains. One thing we do know: We grow when we reach out and deep within. So we encourage all to plant new seeds and

(Stewardship Letter distributed last week...)

"Jesus said to them, 'I am the bread of life. Whoever comes to me will never be hungry, and whoever believes in me will never be thirsty.'" -John 6:35



October 10, 2018

Together

How very good and
pleasant it is when kindred
live together in unity!
- Psalm 133:1

Dear Bethlehem Family,

We continually give praise to God and thanks to you all for your contributions of time, talent and treasure. Last year we not only had an amazing staff and year of ministry together, but when we saw a small shortfall and asked you for help, you answered. Our December 2017 "Bridge the Gap" campaign helped balance the 2018 budget and exceeded our goal of \$6,000 by over \$800. This year we have new areas of concern, and a lot of exciting potential directions for ministry.

First and foremost, the Youth Challenge Fund initiated in 2010 has run out, and the funds we used to supplement our Y2A ministry each year (averaging \$6k/year) are no longer available. When you couple that with the obligations we face for outreach, ministry and growth, our financial leaders tell us we need to raise our regular giving by over \$18,000 this coming year to maintain our current programming and staffing.

So, in addition to welcoming more members each weekend, one way to increase our giving is to focus on our vision and mission through an exciting new process of discovery: a call to visualize what we hope to look like in the future, with a clear and bold new set of goals. We have thrived at Bethlehem for 125 years (technically, 126!), so now we ask "How will we begin the next 100 years, or the 'new century' of Bethlehem, together?"

This year we focus on the theme "Together" as we move forward, visualizing 100 ways of...:

- 1.) **Welcoming: 100 New Faces in the pews...**To keep growing, we do well to focus on one of our biggest strengths – our hospitality and sense of community. Starting in 2014, we spent three years building up to our 125th Anniversary with the goal of welcoming 125 new members. We fell short of that goal, but only by a few (we brought in about 110 new members!) If we made our new goal 100 members over the next 3-5 years, could we not do the same? However, this time we could focus not solely on the numbers, but on new ministry to engage our new friends and help them stay, thrive and lead – with a new energy for a new goal: becoming a place of deeper teaching, and a place where disciples make disciples who make more and more disciples.
- 2.) **Growing Closer: 100 New Ways to Build Relationship...**Growth is not just about getting "bigger" as a church; it is about getting deeper in relationship to God and with one another. At Bethlehem there is a need, and indeed a clamoring, for more small groups, bible studies, and other specialized ministries that might require shorter time commitments (for those not wanting to serve on a committee, for example) with just as much depth and impact. Studies have shown that getting new members involved *early* and connected to their passions of ministry help strengthen their faith and increase the likelihood they will remain and thrive with the flock.
- 3.) **Building Sustainability: An additional "100" for each family to contribute...**Here we get real about the finances. For us to meet our current budget, we are told that each family at Bethlehem would either need to increase their pledge by 7% more than last year's giving, or for each family to make, on average, a *one-time* contribution of \$100 in addition to their regular giving.

Our vision is clear, and our congregation is strong. But our needs are real. Please consider what the Bethlehem faith community means to you and how you can help us thrive and grow based on the above themes and considerations. The enclosed pledge card can be returned on Pledge Weekend (November 3rd and 4th), via mail, or placed in the office mailbox of Bookkeeper Phil Anderson.

Grace and peace to you,

Your Stewardship Committee

President's Corner

Fall is here again! The smell of leaves, pumpkins and apple cider for sale, and cooler weather all remind us that the seasons are changing – again. One thing that does not change is the excitement and activities that abound at Bethlehem Lutheran Church. We have a long and cherished history of events, groups to join, and activities to be involved with. I hope you can take advantage of some of the many events on going at your church. Check your weekly bulletin and The Star for all the wonderful details.

We are blessed with strong pastoral and spiritual guidance in Pastor Paul. He, along with Sharon Weller our Music Coordinator work hard to provide us with three unique worship settings that will appeal to all of our members.

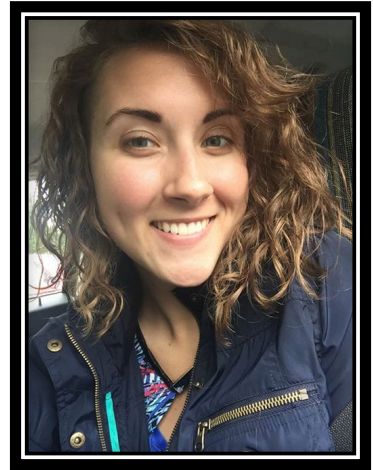
With so many blessings come some challenges as well. This is one that every member of Bethlehem can be a part of the solution. Simply stated: we need more members! The Membership and Evangelism Committee is dedicated to grow the membership, but they need our help. During the past several years, we had a goal to bring in 125 new members. That goal needs to be renewed and expanded upon. That's where you come into the picture. Each of us need to become ambassadors for Bethlehem Lutheran Church. When you are talking with friends or co-workers, invite them to worship with us. You are a powerful force in bringing in new members. We have big plans to grow our mission both within and outside our walls. To actualize these plans we need more members. Please do all you can to be part of the solution!

Have a blessed month and walk in the peace of God,

Jim Parkinson

Church Council President

FROM THE DESK OF ALEXIS—DIRECTOR OF YOUTH AND OUTREACH



Happy Fall, Bethlehem! Some updates for you...

Confirmation classes are now full swing, as is our **Sunday School** program—please keep your eyes peeled for opportunities to help out with classes!

Our first **High School Night** (hosted in Suttons Bay) was a blast—and our next event will be on **Saturday, October 20th**... going to Jacob's Corn Maze! We will be carpooling from Tom's West Bay at 6pm, so let me know if you have questions.

Though our numbers are small, **THEO** kicked-off in style on September 12th! We will be at **Horizon Books** for our **October 10th** meeting!

The 30-Minute Journey (our adult education offering) has resumed, and we are looking into the life of **C.S Lewis**! We hope you'll join us for some fruitful discussion!

Can't leave the younger ones out—**BLUES** is kicking off on **October 26th** with pumpkin decorating and snacks... we're excited to see all of you and create some beautiful masterpieces!

And last but not least, registration is open for the **Great Lakes Gathering**, the annual high school/young adult conference event hosted by Living Water Ministries, but we have plenty of room for more! We will be partnering with Zion Lutheran (of Cadillac) again as we travel south to Lansing. And registration for **Charge** (for our middle school students) opens in November! Please consider sending your kiddos to this awesome event!

****The YOUTH EVENTS MASTER CALENDAR is available! This packet includes all the information you could possibly need concerning our youth programs and how you can get involved! ****

On a more personal note, as was mentioned at the September Jubilee, I will be applying to **YAGM (Young Adults in Global Mission)**, this December. This program entails a 1-year-long trip to one of thirteen different countries designated by the **ELCA**, and is something that I have been desiring to do for over 5 years now. This means that I will be leaving Bethlehem in August of 2019, should I be accepted to the program. (I should know the status of my application by February/March of 2019.) I want to express (with great emphasis) that my choice to move on has nothing to do with the community at Bethlehem—I have received nothing but love and support from you all, and I continue to be amazed with your generosity and compassion. I feel like I have a family here that is irreplaceable. However, as I stated, this trip is one that I cannot pass up, as mission work has been a passion of mine for the past 7 years. I appreciate your flexibility in this time of transition, and I will keep you posted as more information becomes available!

Peace, and God's Blessings,

Alexis Steig

Director of Youth and Outreach
Bethlehem Lutheran Church, TC

TOGETHER: Threads of Giving, Bread of Life

We are launching our 2018-2019 Stewardship Campaign Together: Threads of Giving, Bread of life with Temple Talks October 20/21, and October 27/28. The focus of 2019 is working **TOGETHER** to build a vital BLC community with our given talents and resources. Special thanks to Jane Fred and Sharon Weller for helping with the mailing. We ask you to consider how you might become more involved in helping us not only maintain, but grow our BLC Community through outreach and giving.

OPPORTUNITY: We have a paid staffing opportunity!!!! BLC is looking for an individual who would be interested in serving as the Christian Education Coordinator. This position is budgeted for an average of 7 hours per week—understanding that there are busy times in the church year, where more hours will be needed, and slower times where less are needed. This exciting opportunity is integrally involved with, and supported by, the Christian Education Committee. For more information, please contact LoAnn VandeLeest, Personnel Committee Chair at 231-620-5445.

SEEKING MEMBERS: Please consider sharing a bit of your time, input, talent, and LOVE for BLC. The following groups could use your help: The Stewardship Committee (Chair Barbara Wright 231-735-3227), The Altar Guild (Barbara Oster 231-668-7038), and Y2A (needs parents of youth and children for future programming) (Alexis Steig—Church office).

LITTLE ARMS OPEN: Our Baby Pantry is hosting a Family Outreach at Bethlehem on November 8, 10am-4pm. The Grand Traverse Health Department will provide Health & Nutrition events, information on dental services and safe sleep. We will have Outreach Counselors on site to assist families. ACTS in Williamsburg will provide vouchers to families for their food pantry. Contact Chuck Ardingo with questions. **Items needed are: Pull Up Diapers sizes 2T and 3T, Baby Wipes, Bibs, Cardboard Books, Toddler Size Winter Undershirts, Children's Boots, Toddler Size Socks, Cold Weather Items (gloves, mittens, hats, etc.)** If you are able to assist with a donation, it would be greatly appreciated. Leave items in the Gathering Space on the table marked "Baby Pantry Items." Thank you!

Giving statements through August 31 are in your mailboxes. Please review and contact the bookkeeper with any questions. If you are without a mailbox and would like to have a record of your giving for the first two thirds of 2018, the bookkeeper can accomplish that as well. Call or stop in during office hours Mon., Tues., or Thurs. or email at bookkeeper@bethlehemtc.org. Thank you.

THE FELLOWSHIP COMMITTEE has reserved 20 seats for the December 2, 2018, 2:00 PM Matinee of "A Christmas Carol" at the Old Town Playhouse. 10 seats are in the balcony and 10 seats are on the main floor. The price is \$22 per person (adult and youth), provided we fill all 20 seats. We plan to meet in the Fellowship Hall for a "bring your own lunch" get together after the 11 AM service on December 2nd and then go to the show. A sign-up sheet is in the Gathering Space. If you have any questions please contact Chuck Ardingo.

BETHLEHEM LUTHERAN ART & CRAFT SHOW THANK YOU

A heart filled "THANK YOU" goes out to all who participated in the October 13th "Art & Craft Show". Our goals of organizing a productive fundraiser and providing a community event, which gave more exposure to Bethlehem and brought in new faces to our church, were overwhelmingly reached. From the planning stages to the day of the show, there have been many hands working together to make this event happen. THANK YOU—Nancy Ammann, Phil Anderson, Chuck & Kris Ardingo, Diane Blair, Connie Christopherson, Mary Lou Deutsch, Tina Dohm, Nancy Downer, Norm & Jane Fred, Monica Graf, Kate Holtfreter, Pete Hoopfer, Carl & Suzanne Lehto, Jim Leibenguth, Jim & Cindy Monroe, Donna Novak, Barbara Oster, Jim Painey, Alexis Steig, Frank Wall, Sharon Weller, Renae Wells, Barbara Wright, and those who brought in baked goods for the Christian Education Bake Sale. A special kudos goes out to my sister, Sue VanZee, for the countless hours she put in on the building layout for the vendors and creative ideas for the show. Also, thank you to all the members who took time out of their day to check out the 40 artists and crafters and support our cause.

Faith is taking on all challenges with an open heart and mind, with no doubts, total trust in His Word. Thank you, Bethlehem, for hosting this Historic Event and making it happen. Blessings, Patricia Leibenguth.

HUGE THANK YOU: We would like to send a HUGE THANK YOU to all of our men and women who help work on the funeral luncheons. We have had several in the last week or so, and we are very thankful for all of you coming out to help us prepare and serve these families. It could never get done without the help of each and every one of you, THANK YOU!! We would also, like to thank all of the Fellowship Committee people who helped us out on the luncheons, as well. It was GREAT to have your help to make things easier too. THANK YOU!! Many hands make light work.

Thank you to each and every one of you, you are GREATLY APPRECIATED, and we can not thank you enough. God Bless You All, Sharon Stowe and Judy Fenton

7th Annual BLC Family Camp Turtle Lake Campground, Beulah, MI September 2018

The weather was gorgeous. Chris & Steve Hubert and Katie Pierce arrived on Wednesday. They learned that the Campground was going to be celebrating Halloween on Saturday with Trick or Treat and other activities. Katie's tent soon became a huge Halloween monster and the Hubert's camper was decorated with various ghosts and goblins, rats and walking hands! On Thursday the Barb & Leonard Graf, Carl & Suzanne Lehto, and Tom & Helen Dorsey (Helen is Carl's sister.) arrived. On Friday, Tracey Moyer (with Angel), Martin & Monica Graf (& Jacob & Aleah), Jim and Sandy Parkinson. Carl and Suzanne picked up their grandchildren, Jaxxon and Jameson Lehto Friday evening. Eighteen campers in all!!!

There were Halloween costumes and decorations, trick or treating and pumpkin carving. The weather was very accommodating for early morning kayaking, canoeing and fishing, with a beautiful mist rising off the water. We sat around the campfires visiting morning, noon, and night. Chris's brother Howard Cook and his wife Mary stopped by. Some played Rubicube, Pigmania, Cribbage or Ladder Ball. Matt Branch and Shannon Nemeth with Quentin and Landon (& Athena and I'm sorry I can't remember the other dog's name) came for all day Saturday. Several went swimming at the sandy beach. The Branch's also brought their kayaks. Jacob rolled his kayak (a first and then rolled it again. What fun!!!) Aleah had her first kayak solo. Carl and Jim decided to attend a nearby Farm Auction. Steve had brought his 1915 Model T and gave everyone rides. What an experience. Jacob learned he could be sitting on a bomb! (The gas tank is located beneath the front seat!) Martin caught some fish but I don't think that he kept any. All the kids bicycled around. The Graf's brought a hand-turned ice cream freezer, so we enjoyed some home-made vanilla ice cream. The kids played tag in the dark with light sabres and made use of both of the play grounds. The adults had tours of everyone's campers.

We had several visitors (15 in all) throughout the day and join us for Saturday evening's meal: Jackie Putnam, Rachel Moyer, Jenny Cillufo, Helen Rafeld. Pastor Paul, Meredith and Parker came for the evening campfire. Byron and Maggie Pierce brought a delicious chocolate cake to celebrate Katie's 17th birthday.

Come Sunday, being so close to Traverse City, some packed up and headed to Bethlehem for Church. Others took their time closing up their campsites, enjoying the friendships and visits and looking forward to camping in 2019.



GOD'S WORK - OUR HANDS//RALLY DAY WAS A BIG SUCCESS! Our Sunday School children planted daffodils bulbs under the church sign at the corner of Peninsula Drive (under the direction and supervision of Dan and Laura Hahn plus many parents/grandparents). We thank our children and the adults who took the time to be here for them. Be sure to watch for the burst of yellow next spring!!



Sunday School is off and running again for this year. We are using the Whirl curriculum in our classes. We begin with our opening in the Sunday School Sanctuary in the Fellowship Hall. You are invited to stop by and join us in our worship!



BAKE SALE AT CRAFT SHOW! Christian Ed is hosting a baked goods table at the craft show on October 13th. We would be happy to accept donations from the congregation for our sale. Please bring items to church on Friday evening from 4 to 7PM or drop them off between 7 and 9AM on Saturday. We would appreciate it if you would place one or two cookies/bars in a baggie OR be sure each individual item is PRE-WRAPPED. Monies will be used to fund extra activities for our kids. Thank you!



UPCOMING EVENTS:

Reformation Sunday: October 28th - See display of Martin Luther Books

Advent Nights: December 5th, 9th & 19th - Shut-in gifts - Nativity Stories

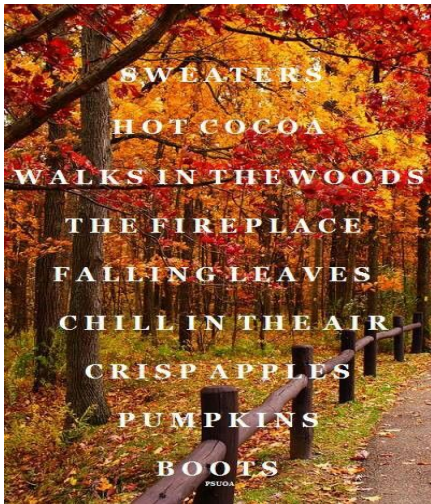
Sunday School Christmas Program - December 16th - Watch for details

Sunday School will be held on December 23rd during Education Hour

NO Sunday School on December 30th - Jubilee Sunday

AUTUMN BLESSINGS TO ALL!

DEADLINE FOR COUNCIL REPORTS IS WEDNESDAY, OCTOBER 10



A Little Note: Once a month, (currently on the second Wednesday at 2pm) Pastor Paul, John and Jan Stretlien, and occasionally other folks, go to Bay Ridge to offer a Communion Party to the residents. This happens at 2:00 pm and there are songs, communion, a short sermon and fellowship with coffee and cookies after. The congregation is welcome to attend! 😊

FROM THE MEMBERSHIP COMMITTEE & “A LITTLE BIRD” WITH THE INITIALS BG

**“I know how ugly I are,
My face it ain’t no star;
But I don’t mind it because
I’m behind it,
The fellow in front gets the jar”**

This is a Crazy Camp song from long ago that brings to mind an idea about NAMETAGS.

Wearing your nametag is not for you; it is for the person who is in front of you.

You think, “I know everybody and everybody knows me, I don’t need a name tag”; but how true is that? Have you ever thought, “I know this person, I just can’t think of their name”? Or this person really looks familiar, “who is she/he”? Is the person to whom you are speaking thinking those thoughts about you?

At Bethlehem we are privileged to be able to attend three different Services. However, most of us attend the same Service each week. Unless we make an effort to attend a different Service, we probably do not know many people at the “other” Services. Sometimes it is embarrassing to talk with someone who you think may be a visitor or a new member only to discover that they have been a member as long as you.

Fortunately we have Jubilee Service when there is a five Sunday month where we can all be together at the same Service. Our nametags are especially helpful on Jubilee Sunday.

We have had a member that constructed personal mailboxes for all of us. One reason was to store your nametag in order that it would be available each week. Another reason was to notice if paperwork piles up in a neighboring box, you might notice and deliver it or call that person, to spend a little time visiting with a fellow member.

Please wear your nametag; remember it is not for you but for the person to whom you are witnessing, sharing, being friendly whether they are a visitor or a long-time member.

If you have lost your nametag or haven’t received one, please notify the Sharon or Renee in the office. They are not mind readers and know whose nametags are up-to-date.

Reminder---All are welcome at our Council Meetings: Tuesday, November 20, at 6 pm. There is a time slot for guests to speak at the beginning of the meeting,.

Treasurer Update – September 2018

Although the giving level was below what was budgeted, September cash flow was positive by \$4,718. We had budgeted September cash flow to be positive by \$5,453 so we missed our target by \$735. You never want to complain when cash flow is positive, but when it is less than budgeted there is always concern. Our YTD cash flow is positive by \$1,487.

Again, positive cash flow is always good...but there are clouds on the horizon. October and November are budgeted with large negative cash flows and December of course is positive due to the Holidays. They do not offset each other. The negatives outweigh the positives. Thus I forecast we will be negative come year end. Much can change in the last few months. A strong push is needed on 4Q giving to give us a successful year end.

Dave Peppler – Treasurer and Finance Committee Chair

Council Meeting of 09/18/2018

The topic that seemed to be part of all discussions on Tuesday, 9/18, at Council was the growth of Bethlehem. The first thing I want to say before my few comments on growth is, "Thank you very much for all you already do for Bethlehem." Whether it is Membership, membership is down slightly from 2017, or Stewardship, the average giving at Bethlehem is down. We as a Church Family must prayerfully look to assist Bethlehem with the growth of both Membership and Stewardship.

If we ask ourselves the question, "But what can I as one member do?", the answer may be as simple as, wearing your name badge each Sunday and greeting a visitor, a slight increase in our weekly offering or joining a committee for a small time commitment each month. Bethlehem Vision is a new committee that will also address our growth needs and we are blessed for their work. As Pastor Paul stated at Council, one of the goals of Bethlehem is to "cast a vision that inspires everyone." I believe we all need to continue to pray for our Church growth and look inside for further ways we can assist in that growth.

Tim Fox Church Council Secretary



WOMEN OF BETHLEHEM

OCTOBER 2018

A PRAYER FOR OCTOBER



This day, Father, may my eyes be opened to see all the beauty in all that is ordinary - yet special - around me. May the glory of all that You have made remind me of Your presence and lead me closer to You. Amen.



Suzanne Lehto has graciously volunteered to be secretary of WELCA beginning in January, 2019. We thank her and welcome her to our fold!

* * * * *

UPCOMING EVENTS:

November 10-11: Thank Offering Weekend: All services at this weekend will be presided over by the women of our congregation. We will highlight work being done by the women of Bethlehem and women throughout the world. There will be a special offering taken at all services. Many of you took a thank offering jar last year and this will be the time to return it filled with your thanks for the many blessings God has given you. Jars will be available in the coming weeks if you would like one. However, you do not need a jar to contribute. *(Please note if you desire to give your gift via check, make it out to WELCA or Women of the ELCA.)*

This special offering will be used to support WELCA ministries that reach thousands of communities - locally, nationally and internationally.

Please join us.

December 1, 2018: Advent Luncheon: Stay tuned for further information!

Blessings for a beautiful season of Autumn!



Evangelical Lutheran Church in America
God's work. Our hands.

ELCA GLOBAL LINKS

Stay informed. Be inspired. Get involved.

ELCA welcomes 12 new missionaries

In July, the ELCA welcomed 12 new missionaries into service. Erica Bryer, Jordan Collins-Brown and Erin Ryan will serve as teachers in Japan. Megan Freudenberg, Patrick Lynch, David Meza, Carol Schwantes, Kevin Tresselt and Deborah ZudellDickey will serve as teachers in Slovakia. Three seminarians will complete their pastoral internships with our companion churches – Tom Gehring will serve in Malaysia, Caitlyn Melillo will serve in Uruguay, and Joshua Menke will serve in Switzerland. Please join us in celebration and prayer for these new missionaries! To learn more about how you can support their ministry, please contact globalchurch@elca.org.

‘Creating space to experience God’

An alum of the Young Adults in Global Mission program in South Africa, Nate Berkas now serves as the site director of Wilderness Canoe Base, Grand Marais, Minn., where he helps young people connect with creation and experience God in new ways. In this Living Lutheran article, read how Nate’s experience serving with YAGM helped him discern the call to outdoor ministry. A copy of the August issue of Living Lutheran may be accessed from this link.

<https://www.livinglutheran.org/2018/08/creating-space-to-experience-god/>

Effective evangelism – Learning from Our Tanzanian Companions

Since 1963, the Evangelical Lutheran Church in Tanzania (ELCT) has grown from 500,000 members to 6.1 million – approximately 13 percent of the population of Tanzania. Now, the ELCT sees an opportunity to share the important lessons they’ve learned about effective evangelism and outreach strategies with other churches in East Africa and beyond. The ELCA has been invited by the ELCT to help make this training program possible. Learn more about this initiative and how you can support it. Check out this link:

http://download.elca.org/ELCA%20Resource%20Repository/Global_Ministries_Tanzania.pdf

New ELCA podcast – ‘Three Sides’

“Three Sides” is a new monthly podcast featuring stories from the ELCA. As a church that believes God is calling us into the world – together, “Three Sides” presents diverse voices from across the ELCA. Listen as we share stories from the many expressions of this church. Join the conversation at:

<https://www.livinglutheran.org/podcast/>



Dear Bethlehem Family,

Our family has been overwhelmed by your support in the last few weeks of David's life. It was a difficult journey for David and for us, as well. We will always cherish your willingness to assist us in any way. Some were able to visit him at Medilodge before he lapsed into semi-consciousness. Others steadfastly prayed every day for our family and the situations we faced. Still others stepped forward to assist at the time of his memorial service. Many worked diligently in the kitchen and fellowship hall to provide a delicious luncheon at tables with centerpieces bursting forth in brilliant autumn colors.

Our family has grown closer to each other as we took care of so many tasks that were suddenly set before us. It has been so revealing for us to realize exactly how the Lord provides for his children in times of deepest need.

It cannot be understated that Bethlehem people are people of deep faith, who provide comfort and support when it is desperately needed! God's love shines through each of you as you minister to those in who are in need. We have seen you shine brightly -- declaring the hope of eternal life with our Lord and Savior.

Our gratitude to each of you who had any part in upholding us during our time of need. We thank Pastor Paul and the mighty prayer warriors who were relentless in their petitions to God's throne of Grace. We will always remember this time in our lives. We rejoice and thank God that David's suffering has ended. He is at peace and at home with the Lord.

Our love to each one,

Carolyn, Christine, Julie
and the family of David Mann



Update on Book Supper Club: We will be moving the start time for our meetings to 5:30 to accommodate the schedules of those who still work and cannot be in at 5:00. The group voted that we will TRY a meeting at the Cottage Café (located at 420 Munson Ave.) on October 23. We were able to reserve the large room there. We will be ordering small menu items so as not to tie up too much time with eating. Russ and Carole Luttinen are retiring from set-up/clean-up. We thank them for their years of service! 😊

AED CERTIFICATION: The Christensen Small Group is working on the recertification of BLC's AED Equipment. Ideally, we would like to have People Certified in CPR/AED that represent different groups and times at church. We need to maintain a list of everyone currently certified. Barb is working to set up a training. If you have a current CPR/AED certification or are interested in taking a one-half day class, contact Barb Graf at 946-5120

CCC is moving down the alphabet to FFF: Finger-Food Fellowship!

This is a way for any Bethlehem member to be involved! We all know how nice it is to munch a little something on Sunday morning while chatting. Any person, couple or group can sign up to bring cookies OR ANY FINGER-FOOD which only requires a napkin. It could be crackers, cheese and meat cubes, veggies, nuts, candy, mini-sandwiches, or whatever your clever brain and hands can create. One tray should be ready after both Sunday services with someone cleaning up before leaving church. Please feel the spirit moving you and sign up on the sheet in the Narthex. AND WRITE DOWN YOUR DATE BECAUSE NO ONE WILL BE REMINDING YOU. This is a wonderful ministry not only for members but also for welcoming visitors.



SHOP AT FAMILY FARE AND HELP RAISE MONEY FOR QUILTS!!

Shop at Family Fare, 905 E. 8th Street here in Traverse City (or at any Family Fare in the area) and help raise money for quilts!

*To warm others with more than a prayers,
save register receipts when you shop Family Fare!
Lutheran World Relief quilters need help from you.
Bring Family Fare receipts to us that you could do.
This helps raise money for the supplies it will take...
for fabric, thread, and shipping necessary for the quilts we make!*

Questions? Please call Betty Rutila at 231-947-1013

WELCOME TO OUR NEW PAGE

“We Care for God’s Creation”



This page will be a monthly feature page in the Star dedicated to taking care of our environment and appreciating the bounty that God has given us. We are going to be looking for your contributions. Help us highlight our gratitude to Him from whom flows all blessings. Please contact Judy Strickland with your ideas or the church office.



Plant Milkweeds....that is
what the monarch
survives on



CLEAN UP GREEN UP—22
VENDORS ACCEPTED 700 CARS
WITH ITEMS TO BE RECYCLED



Head out for a self-guided field trip during fall colors....for ideas: nature.org/miplaces

Let us leave a splendid legacy for our children....let us turn to them and say, this you inherit: Guard it well, for it is far more precious than money....and once destroyed, nature’s beauty cannot be repurchased at any price”---Ansel Adams

THE 3 R’S OF CONSERVATION

REFUSE—Say “No Thank You” to unnecessary things, i.e. plastic grocery bags, straws, etc.

REUSE—reuse the bag, donate old sheets to the quilters

RECYCLE—Paper, plastic, metal, batteries, etc.



The Worship & Music Committee has restored the custom of honoring new members of the family of God with a rose at the Altar. Those who wish to celebrate their new child or grandchild can contact the church office. The cost is \$10.00 to be submitted to the church office, or labeled as such and placed in the collection plate. The rose and vase can be taken by the family after the 11:00 service on Sunday.

Musicality

Another way to support your Bethlehem Music Department is to join one of the music groups. Depending on the one you join, you could be a part of services every 2 months, once a month, once every three weeks, or about every other week. They all have different schedules. What fits you best?

Your choices are steel pans, bells, Worship Team, and choir. They rehearse once a week with trained directors and really build up quite a comradery. It's fun. Think about it.



Did you know Love In the Name of Christ has a Medical Equipment Loan Ministry? If you, a friend or a family members needs a wheelchair, walker, cane, bathroom equipment or more, we can help! We have closet locations at Christ the King in Acme, Grace Episcopal mid-town, St. Patrick in the Grawn area and at the Love INC offices on East Front Street. **Call 941-5683** to speak with us about a loan or a donation of equipment. Thanks to our partnership you can have love and care at home!

Habitat for Humanity

Habitat for Humanity is always looking for volunteers:

1. Skilled/Unskilled volunteers to serve as site coaches leading and teaching groups of volunteers in finish carpentry. No experience necessary.
 2. Committee Members. Time commitment is about three hours a month. Committees needing members are Faith Relations, Family Selection and Events.
 3. Re-Store volunteers / Donation drives / Pickup and Delivery
 4. Lunch volunteers to feed construction site crews.
 5. Deconstruction teams to salvage materials to be sold at the Re-Sale Store.
- If you're interested in helping out, please call Michelle Reichert at 231-941-4663



Health Concerns*

*Richard Fernholz, Nancy Smith, Hazel Lautner,
Margie Whitney, Jo Hasse, Mary Gordon, Ruth Boerman,
Linda Davis, Juanita Lautner, Ellie Tacke, Vern and Bev Attwood,
Roy Stowe, Kate Holtfreter, Joyce Rombouts,
Marlene Baesch, Alvin Kober,
Mandy Hitesman, Dee Springer, and Harper Wiemerschlage*

Grand Traverse Pavilions: Vern & Bev Attwood,

Homebound: Hazel Lautner, Ruth Boerman

Traverse Manor: Margie Whitney, Juanita Lautner

French Manor LaFranier: Jo Hasse, Joyce Rombouts

French Manor: Mary Gordon

Boardman Lake Glens: Inge Thomas

Hospital Visits: Please let the church office know if you are going into the hospital for a scheduled procedure or an emergency so Pastor Paul can visit you.



BLC's PRAYER CHAIN is always seeking partners in prayer.

More volunteers are needed for this crucial ministry.

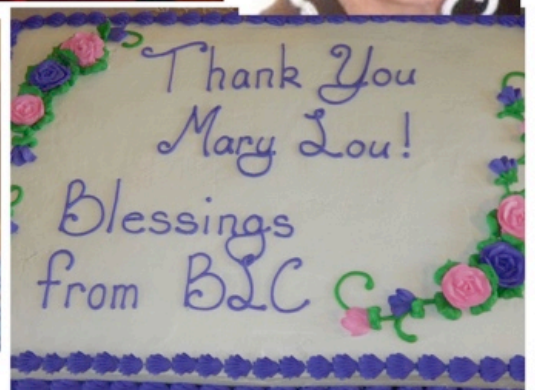
**For more information or to set the Prayer Chain in motion,
call Jan Stretlien @ 947-3265 or email jstretlien@gmail.net**

*If you would like your name, or the name of a loved one, to appear on this list which appears here and in the weekly bulletin, please call the church office at 947-9880.

Are you checking for the latest BLC updates at: www.bethlehemtc.org?

You saw Norm and others take the photos...be sure you see them at www.bethlehemtc.org!

Good News...and great news...at www.bethlehemtc.org...



BLC Contacts

PLEASE NOTE SEVERAL ADDRESS UPDATES

Church Office

Pastor Paul Busekist	paul.busekist@bethlehemtc.org
Admin. Asst. Sharon Weller	admin@bethlehemtc.org
Admin. Aide Renae Wells	admin@bethlehemtc.org
Bookkeeper, Phil Anderson	bookkeeper@bethlehemtc.org
Sharon Weller, Music Director	sharon.weller@bethlehemtc.org
Alexis Steig, Youth & Outreach Director	alexis.steig@bethlehemtc.org
Website	www.bethlehemtc.org

Church Council

Jim Parkinson, President	president.council@bethlehemtc.org
Chuck Ardingo, Vice President	vicepresident.council@bethlehemtc.org
Tim Fox, Secretary	secretary.council@bethlehemtc.org
Dave Peppler, Treasurer	treasurer.council@bethlehemtc.org
Shelly McAllister, Financial Sec.	Secretary.council@bethlehemtc.org
Phil Anderson, Bethlehem Vision	Bookkeeper@bethlehemtc.org
Jan Stretlien, Christian Care Giving	christiancaregiving.committee@bethlehemtc.org
Barbara Graf, Christian Ed.	christianeducation@bethlehemtc.org
LoAnn VandeLeest, Evangelism	evangelism@bethlehemtc.org
Chuck Ardingo, Fellowship	fellowship.committee@bethlehemtc.org
LoAnn VandeLeest, Membership	membershipevangelism.committee@bethlehemtc.org
LoAnn VandeLeest, Personnel	personnel.committee@bethlehemtc.org
Chuck Ardingo, Property	property.committee@bethlehemtc.org
Barbara Wright, Stewardship	stewardship.committee@bethlehemtc.org
Nancy Downer, Worship and Music	worship.committee@bethlehemtc.org
Barbara Graf, Youth/Y2A	youth.committee@bethlehemtc.org

If you have an interest in serving on any of the above Committees,
Please contact the Committee Chairperson(s).

BLC - Non assigned mtg, space, Conference Room, Event Held Outside of BLC, Fellowship Hall, Gathering Space, Lower Room 2, Oct 2018 (Eastern Time - New York)
Lower Room 3, Lower Room 4, Nursery Room 1, Nursery Room 3, Nursery Room No #, Sanctuary, Youth Room

Sun	Mon	Tue	Wed	Thu	Fri	Sat
<div>10am - Jubilee Sunday</div> <div>11am - Jubilee Luncheon</div> <div>1pm - Drive My Way</div>	<div>10am - Alanon-B</div> <div>10am - Alanon-LR3</div> <div>10am - Staff Meeting</div> <div>2:30pm - Stewardship Mtg.</div> <div>3pm - Lessons/Weller</div> <div>6:30pm - Apprentice</div>	<div>9am - LWR Quilting</div> <div>9am - Prayer Shawl</div> <div>9am - Property Work Group</div> <div>3pm - Lessons/Warne</div> <div>5:30pm - AAUW</div> <div>6pm - Christian Ed Mtg.</div>	<div>3pm - Lessons/Weller</div> <div>6pm - Worship Team</div>	<div>3pm - Lessons/Warne</div> <div>5:30pm - ACOA (LR)</div> <div>6:15pm - Bell Choir</div> <div>6:30pm - Fellowship Comm.</div> <div>7pm - Choir Rehearsal</div>	<div>10am - Alanon-B</div> <div>10am - Alanon-LR3</div> <div>2:30pm - Front Street Jazz</div> <div>5pm - Wedding Reh.</div>	<div>2pm - Wedding -</div> <div>5pm - Celebrate! Worship</div>
<div>8:45am - Worship Service</div> <div>9:45am - Adult Ed.</div> <div>9:45am - Membership &</div> <div>9:45am - Sunday School</div> <div>9:45am - WELCA Board</div> <div>11am - Modern Worship - S</div> <div>12:30pm - Wor. & Mus.</div> <div>1:15pm - Confirm.</div>	<div>10am - Alanon-B</div> <div>10am - Alanon-LR3</div> <div>10am - Staff Meeting</div> <div>3pm - Executive Committee</div> <div>3pm - Lessons/Weller</div> <div>4pm - Drive My Way</div> <div>6pm - Sew Pieciful Quilters</div> <div>6:30pm - Apprentice</div>	<div>9am - LWR Quilting</div> <div>9am - Prayer Shawl</div> <div>9am - Property Work Group</div> <div>10am - Finance-CR</div> <div>12pm - Sarah Circle</div> <div>3pm - Lessons/Warne</div> <div>4pm - Drive My Way</div> <div>6pm - Y2A Meeting (C)</div>	<div>2pm - ALS Support Group</div> <div>2pm - Communion Party-BR</div> <div>3pm - Lessons/Weller</div> <div>4pm - Drive My Way</div> <div>6pm - Worship Team</div> <div>7pm - THEO</div>	<div>9am - Baby Panty-FH</div> <div>1pm - Rebecca/Ann Circle</div> <div>3pm - Lessons/Warne</div> <div>4pm - Drive My Way</div> <div>5pm - Craft Fair Set-Up</div> <div>5:30pm - ACOA (LR)</div> <div>6:15pm - Bell Choir</div> <div>7pm - Choir Rehearsal</div>	<div>10am - Alanon-B</div> <div>10am - Alanon-LR3</div> <div>2:30pm - Front Street Jazz</div> <div>3pm - Craft Fair Set-Up</div> <div>6pm - Faith and Family</div> <div>7pm - Bridge-GS</div>	<div>9am - Craft Fair</div> <div>5pm - Worship-S</div>
<div>8:45am - Worship Service</div> <div>9:45am - Adult Ed.</div> <div>9:45am - Sunday School</div> <div>11am - Modern Worship - S</div>	<div>10am - Alanon-B</div> <div>10am - Alanon-LR3</div> <div>10am - Staff Meeting</div> <div>3pm - Lessons/Weller</div> <div>4pm - Drive My Way</div> <div>6pm - Oster SG</div> <div>4pm - Drive My Way</div> <div>6:30pm - Apprentice</div> <div>6:30pm - Gamblers</div>	<div>9am - LWR Quilting</div> <div>9am - Prayer Shawl</div> <div>9am - Property Work Group</div> <div>3pm - Lessons/Warne</div> <div>4pm - Drive My Way</div> <div>6pm - Council Meeting</div> <div>7pm - Gray SG</div> <div>7pm - Lautner SG @ the</div>	<div>3pm - Lessons/Weller</div> <div>4pm - Drive My Way</div> <div>6pm - Worship Team</div>	<div>12pm - XYZ</div> <div>3pm - Lessons/Warne</div> <div>4pm - Drive My Way</div> <div>5:30pm - ACOA (LR)</div> <div>6:15pm - Bell Choir</div> <div>7pm - Choir Rehearsal</div>	<div>10am - Alanon-B</div> <div>10am - Alanon-LR3</div> <div>2:30pm - Front Street Jazz</div> <div>5pm - Provo Wedding Reh.</div> <div>5pm - Worship-S</div> <div>5:30pm - Grand Traverse</div> <div>6:30pm - HSNIGHT</div>	<div>8:30am - App. Silent</div> <div>1pm - Provo Wedding</div> <div>5pm - Baptism - Max</div> <div>5pm - Worship-S</div> <div>5:30pm - Grand Traverse</div> <div>6:30pm - HSNIGHT</div>
<div>8:45am - Worship Service</div> <div>9:45am - Adult Ed.</div> <div>9:45am - Sunday School</div> <div>11am - Modern Worship - S</div> <div>1:15pm - Confirm.</div>	<div>10am - Alanon-B</div> <div>10am - Alanon-LR3</div> <div>10am - Staff Meeting</div> <div>3pm - Lessons/Weller</div> <div>4pm - Drive My Way</div> <div>6pm - Sew Pieciful Quilters</div> <div>6:30pm - Apprentice</div>	<div>9am - LWR Quilting</div> <div>9am - Prayer Shawl</div> <div>9am - Property Work Group</div> <div>3pm - Lessons/Warne</div> <div>4pm - Drive My Way</div> <div>5:30pm - Book/Supper Club</div> <div>5:30pm - Newcomers</div>	<div>3pm - Lessons/Weller</div> <div>4pm - Drive My Way</div> <div>6pm - Worship Team</div>	<div>9am - Baby Panty-FH</div> <div>3pm - Lessons/Warne</div> <div>4pm - Drive My Way</div> <div>5:30pm - ACOA (LR)</div> <div>6:15pm - Bell Choir</div> <div>7pm - Choir Rehearsal</div>	<div>10am - Alanon-B</div> <div>10am - Alanon-LR3</div> <div>2:30pm - Front Street Jazz</div> <div>4pm - Drive My Way</div> <div>5pm - BLUES @ BLC</div>	<div>1pm - Drive My Way</div> <div>5pm - Holden EP</div>
<div>8:45am - Worship Service</div> <div>9:45am - Adult Ed.</div> <div>9:45am - Sunday School</div> <div>11am - Modern Worship - S</div> <div>1pm - Drive My Way</div> <div>2pm - Christensen Small</div>	<div>10am - Alanon-B</div> <div>10am - Alanon-LR3</div> <div>10am - Staff Meeting</div> <div>3pm - Lessons/Weller</div> <div>6:30pm - Apprentice</div>	<div>9am - LWR Quilting</div> <div>9am - Prayer Shawl</div> <div>9am - Property Work Group</div> <div>3pm - Lessons/Warne</div> <div>4pm - Drive My Way</div> <div>5:30pm - Book/Supper Club</div> <div>5:30pm - Newcomers</div>	<div>3pm - Lessons/Weller</div> <div>6pm - Worship Team</div>	<div>3pm - Lessons/Warne</div> <div>5:30pm - ACOA (LR)</div> <div>6:15pm - Bell Choir</div> <div>7pm - Choir Rehearsal</div>	<div>10am - Alanon-B</div> <div>10am - Alanon-LR3</div> <div>2:30pm - Front Street Jazz</div>	<div>5pm - Celebrate! Worship</div> <div>5pm - Worship-S</div>
	<div>28</div>	<div>29</div>	<div>30</div>	<div>31</div>	<div>1</div>	<div>2</div>
						<div>3</div>

Because of the many activities here at BLC, this is only a partial calendar. You can view the entire calendar at <http://www.bethlehemtc.org/community-calendar> or call the office at 947-9880 for more information (and corrections/additions).