



Bethlehem
LUTHERAN CHURCH

Traverse City, MI 49686
(231) 947-9880

JULY 2018



Website: www.bethlehemtc.org
Email: bethlehem@bethlehemtc.org

Building Hours:

Monday – Thursday, 9am to 3pm

Office Hours

Monday – Thursday, 9am to 3pm

Worship Times:

Saturday: 5 pm Celebrate! Worship
Sunday: 8:45 am Traditional Worship
9:45 am Education Hour
11 am Modern Worship

Communion at all services

Follow the STAR to Bethlehem!

Our Mission...

“We journey with God, to serve with love”

Our Vision...

“As a community of believers journeying with God together, we at Bethlehem are called to serve with love by growing a premier youth ministry; enlivening Christian discipleship through lifelong learning, care, and spiritual formation; fostering a vibrant and inspiring worship experience; utilizing our natural setting and location for faithful creation care and outdoor ministry; and opening our doors always to be a “campus at the crossroads” for the mission and ministry of Jesus Christ.”



"Be still and know that I am God."

Recently I recalled in a sermon an old meditational practice based on the above verse from Psalm 46 (verse 10, to be exact). The meditation invites you to say the verse over and over, eventually subtracting one or two words from the right side of the sentence, until you just have the one-word statement: "Be."

So, here goes:

Be still and know that I am God. (This is the original verse; the focus is clear.)

Be still and know that I AM. (This - "I AM" is one of God's first "names" - as God recounted to Moses long ago. God is, was, and will always be.)

Be still and know that. (Let that previous sentence stick, like the residual image you might see after looking at a bright light then looking away...this time focusing on God's mysterious and wondrous presence and power.)

Be still and know. (There is a certain type of "knowing" that comes with meditation...and allowing God's presence to be *experienced* as part of that knowledge.)

Be still. (Let nothing get in the way...And just listen...Then simply...)

Be.

I hope this July month, often seen as a "sabbath" for families and church committees alike, is one in which you can be and do this little "psalm-editation" exercise (yes, I just made up a word! ☺)

In the meantime, as I write these words I also prepare in just moments to head off with Alexis and the Leatherman youth (Austin, Ally and Courtney) to Houston, Texas for the National Youth Gathering. It will be a time of journey, action, service and (hopefully) a little solace and still-ness. There is nothing like these gatherings, with tens of thousands of worshippers, disciples and servants - often under one roof - praising God with their words, thoughts and deeds.

And so we go, no doubt to return with stories...

See you soon, and don't forget: this July will be a month (and outdoor Jubilee) to remember!

In peace always,
Pr. Paul

President's Corner

Thank you one and all for your congratulations. It has been overwhelming... I hope that I can live up to your expectations. If I do, it will only be with the open thoughts and support of our church council, past members and parishioners.

I joined the Bethlehem Lutheran Church Council because I thought I would bring some new/different thoughts and perspectives. Ironically it has given me some new/different thoughts and perspectives as well as opened my eyes to different approaches to dealing with others and life's issues...

As you may have noticed I am not comfortable in front of the church, I am not a public speaker unless I am on firm footing. Let's talk about a business/sales direction, how we can build it and what products will accomplish the goal, I am on firm footing. I believe I am a good listener but as it has been pointed out to me at home...not as good as I think I am. 😊

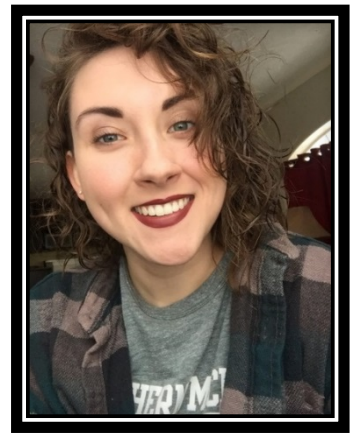
I never considered retirement, I enjoyed what I was doing, but here I am. Now in retirement I am a little overwhelmed by the demands for my time, many times wondering how did I get it all done when I was working full time?

This will be a learning process that with God's help and your patience I will endeavor to get the job done.

Jim Parkinson, Council President

June 2018

FROM THE DESK OF ALEXIS DIRECTOR OF YOUTH AND OUTREACH



Happy July, folks! I hope you've been able to enjoy the GORGEOUS weather and this beautiful area that we live in! ☺ Some updates for you...

As I write this, the **ELCA National Youth Gathering** has not happened yet, so my next article will contain more fun details. However, we hosted our final prep meeting on June 20th and had a blast with the folks from Immanuel Lutheran (Suttons Bay)! Lots of excitement for the work we'll be doing in Houston! More to come... ☺

Our **Parking Lot Fundraiser** this year is in the capable hands of our leader, Renae Wells, along with the Branch Family and many other volunteers! Thanks for all your help! Results from the event will be in my August STAR article...

Our **VBS'18** preparations are bearing fruit! We're now well into developing our set, bible study, worship, and craft plans and we're ready for **July 30th** to come!! Don't forget, registration is now FREE, but donations are gladly accepted, as are volunteers! Contact me or Meghan with any questions.

And a final teaser for you... Plans are in the making for a **trip to Michigan's Adventure** (for our high school students) in August... Keep your eyes peeled for updates!

To wrap up my article this month, I wanted to reflect with you about the idea of **'having faith like a child'** (Matthew 18:1-5). Summer has arrived, and with it have been many trips to the beach! On my days at Bryant Park, I'll often catch myself smiling at the many kids milling around the beach, braving the water (too cold for me, thanks!) and having odd conversations that only kids can truly understand. Truthfully, I miss it. The innocence that leaves as you enter adulthood should be *even more sorely missed* when Jesus tells us that we ought to be more kid-ish! He tells us to trust in him with a sort of reckless abandon; knowing that, somehow, He's going to work it out for us. We don't have to know how, when, where, or why... just that His plan will always prevail, and we need not worry! ☺

I pray that even the 'oldest' among us can achieve this child-like faith... We'd be happier for it!

Peace, and God's Blessings,

Alexis Steig
Director of Youth and Outreach
Bethlehem Lutheran, TC

Christian Education Highlights July 2018



VBS is here folks! Vacation bible school is this month! The dates this year are July 30th through August 3rd. Planning is coming together and props and set building are coming along. You'll be seeing some changes to the sanctuary and fellowship hall throughout the coming weeks as we create our "Shipwrecked" VBS scenery. Although it's coming together well, we could always use more hands, especially during the week leading up to VBS and the Sunday before the first day. We will be needing all hands on deck (pun intended)! We'd love to see you come out and join us during the week leading up to VBS.

Most activity stations have their plans in order and a few are looking for help from the congregation. The Snack station is in need of food donations such as, apples, grapes, clementines, carrots, celery, cucumbers, ranch dressing, some sweet and salty snacks to make trail mixes and especially hot dogs and buns or a dish to share for the Friday family picnic. Contact Renae Wells in the church office (947-9880) with your snack related questions and contributions.

We are still in need of an older kid's Crew Leader as well as more help with audio and visual. Contact me or Alexis if you are interested in traveling with a group of kids from one station to the next throughout the week and if you have a/v tech skills, (or would like to learn)!!

Registration is FREE for everyone so if your kids aren't registered yet or you know someone who would like to register their kids you can either contact Alexis or me, use the portal on the Bethlehem website to begin registering or register completely online at <https://vbspro.events/p/4c0f32>.

Summer is a busy time around Traverse City and BLC. Remember to stay safe and thank our Lord for all the wonderful characteristics Traverse City has to offer that attracts many visitors. Enjoy this beautiful summer before it leaves us. ☺

Peace and Blessings,

Meghan Denton

Christian Education Coordinator

Reminder---All are welcome at our Council Meetings: Tuesday, July 17. There is a time slot for guests to speak at the beginning of the meeting,.

June 13, 2018

Treasurer Update

May 2018 numbers show we had a good month, and the same for YTD. May cash flow was positive by \$3,448. We had budgeted May to have a negative cash flow of \$3,320 which means we are ahead \$6,768 from where we thought we would be for the month. The good May numbers also helped us have a YTD positive cash flow of \$8,808.

A key contributor for this good news was the \$5,740 we received in *Close the Budget Gap* funds. You may recall our 2018 budget projected a deficit of \$6,539. The *Close the Budget Gap* initiative was to proactively address the shortage. Receipt of these funds makes our first five months look good. Without these monies our YTD positive cash flow figure would be \$3,068. It is important we sustain a strong level of giving throughout the year to meet our goal of a balanced budget.

On the expense front we are running close to what was budgeted so far this year. Once you take into account expenses that have been incurred but have not yet hit the books, we are running slightly under budget.

As we enter the summer months, vacation and travel often impact the level of giving. One specific area of concern is our Challenge Grant will run out at the end of 3Q18. This leaves a \$2,000 hole in the 4Q18. Overall, we are having a good year so far, with a few clouds out there to keep an eye on.

Secretary's June Church Council Highlights

The June Council Meeting was dominated by the welcoming of new Council members and the election of Church Officers.

But first, I want to thank our outgoing Council Members, Dianne Blair, Jodi Kelly, Barbara Oster and Carl Lehto. Your service on Council was greatly appreciated and you are a blessing to our Bethlehem Family.

Phil Anderson is stepping down from his President position on Council as he will be the full time bookkeeper for the Church starting July 1st. Phil will continue on Council, as a non-voting member, as the head of Bethlehem Vision our long range planning group that is in development right now. Thank you Phil for your great leadership and vision!

We welcome Nancy Downer as a new Council Member with a 3 year term, Barbara Graf with a 1 year term and LoAnn Vande Leest with a 1 year term. Thank you Nancy, Barb and LoAnn, Council is blessed to have you serving our Bethlehem Family.

Our Church Officers are as follows:

- Jim Parkinson, President
- Chuck Ardingo, Vice President
- David Pepler, Treasurer
- Shelley McAllister, Financial Secretary
- Tim Fox, Secretary

Thank you Officers and we look forward to your insight and leadership at Bethlehem.

Respectfully submitted,

Tim Fox
Church Council Secretary



'Hope Rising in Juba, South Sudan'

In November 2017, the Reconciliation Lutheran Church Community Center and Primary Health Care Clinic opened its doors in Juba, South Sudan, as thousands gathered to worship and celebrate. Since November, incredible work has been happening every day at Reconciliation, with youth programs and training classes seeing participation beyond their imagination and nearly 1,000 attending weekly worship. But the need continues, especially as programming and operational costs start to build. You can make a gift to this crucial ministry of hope by visiting ELCA.org/southsudan. A picture of the church is on the kiosk in the gathering area.

Young Adults in Global Mission Endowment Fund Created

Thanks to a major gift from a generous ELCA family, an endowment fund in support of the Young Adults in Global Mission (YAGM) program has been created! The endowment fund will provide support to the YAGM program in perpetuity. You may make gifts to the endowment fund by selecting "Young Adults in Global Mission Endowment" from the dropdown menu at ELCA.org/global_mission.

'Rewriting the Narrative' At Shekinah Chapel

In Riverdale, IL, 41 members came together to pledge \$33,000 toward constructing a new church with the Evangelical Lutheran Church in Zambia. As a congregation that also receives ELCA Mission Support, Shekinah is rewriting the narrative around giving in our church. Read more about this in the *Living Lutheran*. Copies are available by the entrance.

An Emerging Church in Cambodia

In 2010, the ELCA accompanied the Lutheran Church in Singapore as it began a mission in Cambodia focused on service, evangelism and leadership development. In November 2017, the Lutheran Church in Cambodia ordained its first pastor and continues to grow today through evangelism and outreach, including sustainable development projects and teaching English. The ELCA is excited to witness and invest in the capacity building of this emerging church as it empowers families with the resources they need to know God's promise of life abundant for this world.

WOMEN OF BETHLEHEM - JULY 2018

AMERICA



A - is for the Attitudes that conquer any quest

M - is for the Multitudes who know just why they're blessed

E - pluribus unum from sea to shining sea

R - for all the Riches found where everyone is free

I - for Individuals who sacrifice their all

C - because our Christian faith will answer every call.

So one more - A - for Attitudes that live inside of us.

God has blessed America because God is Who we trust.

by William Heffner

* * * * *

UP-COMING EVENTS:

JULY 25TH - Bible Study at home of Barb and Leonard Graf - 6:30 PM -

RSVP by July 22nd to Barb at 946-5120

Potluck meal: meat and drinks provided. Bring dish to pass, lawn chair, and a Friend! Study - Let Us Pray - will be taken from *Gather* magazine, July/August issue. Meet at church at 6PM to car pool. Questions? Call

Nancy Ammann 946-8433.

ALL WOMEN OF BETHLEHEM ARE INVITED!

WELCA PROJECT FOR TOILETRY/UTILITY BAGS IS CONTINUING!!

We will continue to collect items throughout this year to fill the cosmetic/utility bags for men and women to be distributed to people at community meals and Safe Harbor. A new and revised list of items needed is attached to the collection box located near the mailboxes.

Please note that items need to be travel size in order to fit into the bags.

Thank you all for your response so far. The students at Traverse City High School very much appreciated being remembered by you.

FALL RETREAT AT TUSTIN, MICHIGAN:

September 28-29, 2018

Watch for further information AND check the kiosk for info and registration form.



WORSHIP VOLUNTEERS ARE STILL NEEDED

There are many opportunities for our members to be a part of any of BLC's three services. Some are "in front of the congregation" and many are behind the scenes. With more volunteers on the list for each worship team, the rotation could be every 4 – 6 weeks more or less. We also have music teams that could use your voice or musical skills. Please prayerfully consider joining one of these worship/music teams (training is available for all):

1. **Altar Guild:** Prepares the altar for worship and Communion (one group of two people per weekend)
2. **Assisting Ministers:** Assists the pastor during the worship service and helps serve Communion (one per each of three services)
3. **A/V Team:** Sits in the balcony & manages the weekly "Screenouncements" and worship power point presentations (Sat. 5pm/Sun. 11am)
4. **Lectors:** Reads the Scripture lessons at worship services (one per each of three services)
5. **Hospitality:** Greets people at the door to the Sanctuary, hands out worship folders and collects the offering (groups of two people each for the Sat 5pm and Sun 8:45am services and groups of four people for the Sun 11am service)
6. **Bell Ringers:** Rings the BLC bell in the Gathering Space at the beginning of the service (one per each of three services)
7. **Welcome Table:** Greets people as they enter the church from the parking lot and assists visitors with the layout of the church (coat room, restrooms, nursery, Fellowship Hall, etc) (one or two per each of three services)
8. **Worship Assembly and Sanctuary Preparation:** Assembles the weekly worship folder and prepares the Sanctuary (one group of two people per weekend)
9. **Counters:** Counts the weekly offering collection. (Teams of three or four will rotate on a monthly basis)

1. **Adult Choir:** Sings at different services each month. Rehearses weekly, except for summer months.
2. **Hand Bell Choir:** Plays approximately once per month in a Traditional and Modern service. Rehearses weekly, except for summer months.
3. **Worship Team:** Leads music once a month at the Celebrate! And Modern services. Rehearses weekly, year round.
4. **Steel Pans:** Plays once a month at various services, mostly during the summer months and Christmas services.

For Worship Volunteer Teams 1 through 8, please contact Barbara Oster at 231-668-7038 or beo6475@yahoo.com

For Counters, please contact Shelly McAllister at smcallister3@hotmail.com

For Music Teams, please contact our Music Coordinator, Sharon Weller at 231-947-9880.



Book/Supper Discussion Group

We meet from 5 to 7 pm on the 4th Tuesday of the month. Join us, and if you have any questions, please contact Ellie Long at 231-935-4595.

July—NO MEETING

August 29—A Gentleman in Moscow by Amor Towles

September 25—Lilac Girls* by Martha Hall Kelly

October 23—Before We Were Yours by Lisa Wingate

November 27—Discussion with Paul Wiemerslage about
our Christian relationship to God's Creation

December 4—POTLUCK

(*Based on a true story)

THANK YOU---THANK YOU and keep up the good work. Please continue to turn in your Oleson's receipts!



SHOP AT FAMILY FARE AND HELP RAISE MONEY FOR QUILTS!!

Shop at Family Fare, 905 E. 8th Street here in Traverse City (or at any Family Fare in the area) and help raise money for quilts!

*To warm others with more than a prayers,
save register receipts when you shop Family Fare!
Lutheran World Relief quilters need help from you.
Bring Family Fare receipts to us that you could do.
This helps raise money for the supplies it will take...
for fabric, thread, and shipping necessary for the quilts we make!*

Questions? Please call Betty Rutila at 231-947-1013

WELCOME TO OUR NEW PAGE

“We Care for God’s Creation”

This page will be a monthly feature page in the Star dedicated to taking care of our environment and appreciating the bounty that God has given us. We are going to be looking for your contributions. Help us highlight our gratitude to Him from whom flows all blessings.

From Leonard & Barb Graf’s Garden
All Native Species

Help Preserve Nature
for our hikes



Mark your calendars for September 30. Get your recyclables ready for “Clean Up Green Up” which is being held at West High School parking lot from 9am-3pm. You will find more information on facebook under “Clean Up Green Up” as to what items we actually accept. You can contact Renae Wells at wellsrenae17411@gmail.com with questions.





The Worship & Music Committee has restored the custom of honoring new members of the family of God with a rose at the Altar. Those who wish to celebrate their new child or grandchild can contact committee chair, Barbara Oster at: beo6475@yahoo.com or via phone 668-7038. The cost is \$10.00 to be submitted to the church office, or labeled as such and placed in the collection plate. The rose and vase can be taken by the family after the 11:00 service on Sunday.

Musicality

Another way to support your Bethlehem Music Department is to join one of the music groups. Depending on the one you join, you could be a part of services every 2 months, once a month, once every three weeks, or about every other week. They all have different schedules. What fits you best?

Your choices are steel pans, bells, Worship Team, and choir. They rehearse once a week with trained directors and really build up quite a comradery. It's fun. Think about it.



Did you know Love In the Name of Christ has a Medical Equipment Loan Ministry? If you, a friend or a family members needs a wheelchair, walker, cane, bathroom equipment or more, we can help! We have closet locations at Christ the King in Acme, Grace Episcopal mid-town, St. Patrick in the Grawn area and at the Love INC offices on East Front Street. **Call 941-5683** to speak with us about a loan or a donation of equipment. Thanks to our partnership you can have love and care at home!

Habitat for Humanity

Habitat for Humanity is always looking for volunteers:

1. Skilled/Unskilled volunteers to serve as site coaches leading and teaching groups of volunteers in finish carpentry. No experience necessary.
 2. Committee Members. Time commitment is about three hours a month. Committees needing members are Faith Relations, Family Selection and Events.
 3. Re-Store volunteers / Donation drives / Pickup and Delivery
 4. Lunch volunteers to feed construction site crews.
 5. Deconstruction teams to salvage materials to be sold at the Re-Sale Store.
- If you're interested in helping out, please call Michelle Reichert at 231-941-4663

Health Concerns*

*Richard Fernholz, Ron & Sherryl Hellenga, Nancy Smith,
Margie Whitney, Jo Hasse, Mary Gordon, Ruth Boerman, Ellie Tacke,
Karen Dorvinen, Mandy Hitesman, Vern and Bev Atwood,
Kate Holtfreter, Joyce Rombouts, Marlene Baesch, Dan Morley,
Harper Wiemerschlage*

Grand Traverse Pavilions: Vern & Bev Attwood, Karen Dorvinen,
Ruth Boerman

Joy Givers: Hazel Lautner **Boardman Lake Glens:** Inge Thomas

French Manor: Mary Gordon, Joyce Rombouts

Traverse Manor: Margie Whitney, Juanita Lautner

French Manor Lafranier: Jo Hasse **Orchard Creek:** Miriam Schreck

Kate Holtfreter will be in Ann Arbor recovering from her kidney transplant for several weeks: Cards c/o David Holtfreter, 2818 Roundtree Blvd, Ypsilanti, MI 48197

Dan Morley will be in Ann Arbor at UofM for several weeks: Cards to Daniel Morley, 8A UH room 8403, 1500 Medical Center Dr, Ann Arbor, MI 48109-5110.

Hospital Visits: Please let the church office know if you are going into the hospital for a scheduled procedure or an emergency so Pastor Paul can visit you.



BLC's PRAYER CHAIN is always seeking partners in prayer.

More volunteers are needed for this crucial ministry.

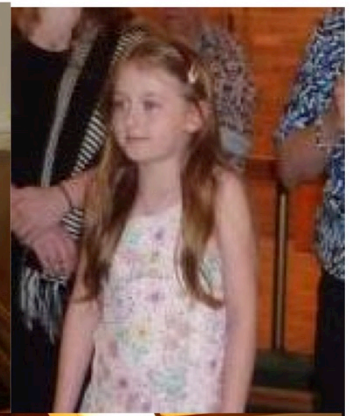
**For more information or to set the Prayer Chain in motion,
call Jan Stretlien @ 947-3265 or email jstretlen@gmail.net.**

*If you would like your name, or the name of a loved one, to appear on this list which appears here and in the weekly bulletin, please call the church office at 947-9880.

Are you checking for the latest BLC updates at: www.bethlehemtc.org?

You saw Norm and others take the photos...be sure you see them at www.bethlehemtc.org!

Good News...and great news...at www.bethlehemtc.org...



BLC Contacts

PLEASE NOTE SEVERAL ADDRESS UPDATES

Church Office

Pastor Paul Busekist	paul.busekist@bethlehemtc.org
Admin. Asst. Sharon Weller	admin@bethlehemtc.org
Admin. Aide Renae Wells	admin@bethlehemtc.org
Mary Lou Deutsch/Phil Anderson	
Bookkeepers	bookkeeper@bethlehemtc.org
Sharon Weller, Music Director	sharon.weller@bethlehemtc.org
Alexis Steig, Youth & Outreach Director	alexis.steig@bethlehemtc.org
Meghan Denton, Christian Ed Coord.	meghan.denton@bethlehemtc.org
Website	www.bethlehemtc.org

Church Council

Jim Parkinson, President	president.council@bethlehemtc.org
Chuck Ardingo, Vice President	vicepresident.council@bethlehemtc.org
Tim Fox, Secretary	secretary.council@bethlehemtc.org
Dave Peppler, Treasurer	treasurer.council@bethlehemtc.org
Shelly McAllister, Financial Sec.	secretary.council@bethlehemtc.org
Jan Stretlien, Christian Care Giving	christiancaregiving.committee@bethlehemtc.org
_____, Christian Ed.	christianeducation@bethlehemtc.org
LoAnn VandeLeest, Evangelism	evangelism@bethlehemtc.org
Chuck Ardingo, Fellowship	fellowship.committee@bethlehemtc.org
LoAnn VandeLeest, Membership	membershipevangelism.committee@bethlehemtc.org
_____, Personnel	personnel.committee@bethlehemtc.org
_____, Property	property.committee@bethlehemtc.org
Barbara Wright, Stewardship	stewardship.committee@bethlehemtc.org
_____, Worship and Music	worship.committee@bethlehemtc.org
_____, Youth/Y2A	youth.committee@bethlehemtc.org

If you have an interest in serving on any of the above Committees,
Please contact the Committee Chairperson(s).

Sun	Mon	Tue	Wed	Thu	Fri	Sat
1	2	3	4	5	6	7
ELCA Natl. Gathering @ Houston, TX, USA	8:45am - Worship Service 9:45am - WELCA Board 11am - Modern Worship - S 12:30pm - Wor. & Mus.	10am - Alanon-B 10am - Alanon-LR3 10am - Staff Meeting 3:30pm - Lessons/Weller 6:30pm - Gamblers	9am - Prayer Shawl 9am - Property Work Group 3pm - Lessons/Warne 6:30pm - Evangl/Memberhi	2pm - Communion Party-BK 3pm - Lessons/Weller 7pm - Park Lot/Fundraiser 7pm - Worship Team	3pm - Lessons/Warne 5:30pm - ACOA (LR)	10am - Alanon-B 10am - Alanon-LR3 2:30pm - Rehearsal/FSJazz 8pm - Park Lot Fundraiser
8	9	10	11	12	13	14
8:45am - Worship Service 11am - Modern Worship - S	9am - Drive My Way 10am - Alanon-B 10am - Alanon-LR3 10am - Staff Meeting 3:30pm - Lessons/Weller 6pm - Sew Placeful Quilters 6:30pm - Gamblers	9am - Drive My Way 9am - Prayer Shawl 9am - Property Work Group 10am - Finance-CR 12pm - Sarah Circle 3pm - Executive Committee 3pm - Lessons/Warne	9am - Drive My Way 3pm - Lessons/Weller 7pm - Worship Team	9am - Baby Pantry-FH 9am - Drive My Way 1pm - Rebecca/Ann Circle 3pm - Lessons/Warne 5:30pm - ACOA (LR)	10am - Alanon-B 10am - Alanon-LR3 2:30pm - Rehearsal/FSJazz 6pm - Faith and Family 7pm - Bridge-GS	5pm - Worship-S
15	16	17	18	19	20	21
Week 5 LWCamp						5pm - Worship-S
8:45am - Worship Service 11am - Modern Worship - S 2pm - Christensen Snail	9am - Drive My Way 10am - Alanon-B 10am - Alanon-LR3 10am - Staff Meeting 3:30pm - Lessons/Weller 6:30pm - Gamblers	9am - Drive My Way 9am - Prayer Shawl 9am - Property Work Group 3pm - Lessons/Warne 6pm - Council Meeting 7pm - Gray SG 7pm - Lautner SG @ the	9am - Drive My Way 3pm - Lessons/Weller 7pm - Worship Team	9am - Drive My Way 3pm - Lessons/Warne 5:30pm - ACOA (LR)	10am - Alanon-B 10am - Alanon-LR3 2:30pm - Rehearsal/FSJazz	
22	23	24	25	26	27	28
8:45am - Worship Service 11am - Modern Worship - S	VBS Set Building 10am - Alanon-B 10am - Alanon-LR3 10am - Staff Meeting 1pm - Drive My Way 3:30pm - Lessons/Weller 6pm - Sew Placeful Quilters 6:30pm - Gamblers	9am - Prayer Shawl 9am - Property Work Group 1pm - Drive My Way 3pm - Lessons/Warne 5pm - Book/Supper Club	1pm - Drive My Way 3pm - Lessons/Weller 7pm - Worship Team	9am - Baby Pantry-FH 1pm - Drive My Way 3pm - Lessons/Warne 5:30pm - ACOA (LR)	10am - Alanon-B 10am - Alanon-LR3 1pm - Drive My Way 2:30pm - Rehearsal/FSJazz	1pm - Drive My Way 5pm - Worship-S
29	30	31	1	2	3	4
8:30am - Jubilee Breakfast 10am - Jubilee Service 12:30pm - Mandelary VBS 1pm - Drive My Way	Vacation Bible School 10am - Alanon-B 10am - Alanon-LR3 10am - Staff Meeting 3:30pm - Lessons/Weller 6:30pm - Gamblers	Vacation Bible School 9am - Prayer Shawl 9am - Property Work Group 3pm - Lessons/Warne				

Because of the many activities here at BLC, this is only a partial calendar. You can view the entire calendar at <http://www.bethlehemtc.org/community-calendar> or call the office at 947-9880 for more information (and corrections/additions).