



Bethlehem
LUTHERAN CHURCH

Traverse City, MI 49686
(231) 947-9880

April
2017



Website: www.bethlehemtc.org
Email: bethlehem@bethlehemtc.org

Building Hours:

Monday – Thursday, 9am to 3pm

Office Hours

Monday – Thursday, 9am to 3pm

Worship Times:

Saturday: 5 pm Celebrate! Worship
Sunday: 8:45 am Traditional Worship
9:45 am Education Hr.
11 am Modern Worship

Communion at all services

Follow the STAR to Bethlehem!

Our Mission...

“We journey with God, to serve with love”

Our Vision...

“As a community of believers journeying with God together, we at Bethlehem are called to serve with love by growing a premier youth ministry; enlivening Christian discipleship through lifelong learning, care, and spiritual formation; fostering a vibrant and inspiring worship experience; utilizing our natural setting and location for faithful creation care and outdoor ministry; and opening our doors always to be a “campus at the crossroads” for the mission and ministry of Jesus Christ.”



"²⁹But they urged him strongly, saying, "Stay with us, because it is almost evening and the day is now nearly over." So he went in to stay with them."



The above verse comes from our gospel reading at the end of April – at our next Jubilee worship. It is verse 29 from the famous "Road to Emmaus" story that only appears in Luke's gospel, chapter 24. It's a famous account of two disciples who did not realize that the resurrected Lord was literally *walking with them the whole time* on their journey to Emmaus. And before Jesus revealed himself to these two sojourners, they did something very important in their culture (and ours): they invited him to dinner.

I am guessing Jesus did not assume that they would invite him. In fact, he started to walk beyond them as they slowed at the proverbial "fork in the road" where they would peel off to walk toward their home. But one of them "urged him strongly" saying the words "Stay with us, because it is almost evening and the day is now nearly over."

Now, maybe it's because I've been planning Holy Week recently and have music on my brain. But when I re-read this story my mind immediately gravitated to the very beginning of Holden Evening Prayer, when we sing together the words "Jesus Christ, you are the light of the world...Stay with us now, for it is evening, and the day is almost over."

Is that a coincidence, or do those words from Holden E.P. come directly from Luke's Emmaus story? My hunch says that they do, and I take this as a reminder that this Lenten season--as we move toward Easter, the resurrection, and our proverbial walks with Christ to our daily destinations--we can be assured that Jesus is always "the light no darkness can overcome" and that when we invite Jesus to stay with us, he always will.

Join us this April, as we journey to the cross, especially these coming weeks for the "Real Final Four Days of Holy Week and Easter" and beyond...as we watch God's ministry continue to bloom and grow at Bethlehem, and we invite Christ into our midst with love, solace and joy.

In peace,

Pr. Paul

President's Corner

This month is so special to Christians around the world. We celebrate Easter this month. Our Lord and Savior Jesus Christ was crucified for our sins, and more importantly rose from the dead to fulfill the scriptures. Martin Luther said, "Our Lord has written the promise of the resurrection, not in books alone, but in every leaf in springtime." He has risen, and so shall you.

As we close the books on the first quarter, it's time to give you an update on the State of the Congregation. Much has been accomplished this year. The repair of the roof in the Gathering Space will soon commence. Various repairs and updates have taken place to make our facilities as accommodating as possible to all. Our thanks go to Carl Lehto and the Property Committee and their tireless attention to the needs of the physical building and grounds.

The various circles are busy with their projects and discipleship. The Christian Education Committee has gifted our 3rd to 6th graders with Bibles this year. Dianne Blair and Donna Novak provided four weeks of orientation on Bible content. Our young scholars are blooming. First Communion Classes for children in grades 1-5 are underway providing more opportunities to learn about what it means to be a Christian. Safe Harbor held its annual hosting of the homeless of Traverse City here at Bethlehem. Many volunteers helped to make the event a safe and successful week. The members of Bethlehem also demonstrated extraordinary compassion and generosity by supporting the campaign to generate a \$20,000 donation from BLC in support of the renovation of the new Safe Harbor facility. The XYZ group continues to hold monthly meetings organized by Butch and Jan Waisanen. The lunchtime gathering explores many timely topics enhanced by great food! Jan Stretlien continues to do wondrous things with her Bear Ministry and Prayer Chain. She has logged many hours and miles spreading joy and smiles to folks who are in need. She is a blessing to all of us! Sharon Weller is expanding our musical horizons with her brand of sacred music for all services. We are even holding a special organ recital on Saturday, April 22, featuring Thomas Bara, Instructor of Organ and Assistant Director of Music, Interlochen Arts Academy and Interlochen Arts Camp. This special music will celebrate Bethlehem and Habitat for Humanity, GTR. There are so many more, but this is just a few highlights.

While it is easy to celebrate our successes, we must also face our challenges. One of the most pressing is our need for your continued financial support. While we have diligently tried to keep expenses under budget, our Treasurer Dave Pepler points out that we are already receiving less than budgeted revenue from the congregation. This is most troubling as it will affect our future programs and support for the activities that make Bethlehem Lutheran Church such a special place for all of us. I appreciate that giving to your church is a personal decision. I wish there was an easier way to fulfill our financial needs, but we must rely on you, the members, to support our work and keep our programs and activities viable. No one on your Church Council wants to scale back our ambitious goals and visions. We prayerfully ask that you help to make this year, our 125th anniversary year, the best ever!

--Phil Anderson

TREASURER UPDATE

March Income and Expense for the General Fund on a cash basis:

March 2017	Actual	Budget	Variance	
Total Income (note 1)	43,288	40,045	3,243	
Total Expenses (note 2)	50,001	43,815	-6,186	
Over/Under (note 3)	-6,713	-3,770	-2,943	

Note 1: Safe Harbor funds inflated March income.
Quarterly contribution rec'd in March make month look good.
Stock grant funds budgeted for March will not be realized until April.

Note 2: Safe Harbor payment inflated March expenses.
Budgeted mortgage principal reduction of \$5,000 moved to April

Note 3: \$2,943 worse against budget for March

Year To Date numbers thru March 2017 for the General Fund on a cash basis are shown below.

YTD 2017	Actual	Budget	Variance	
Total Income	108,115	107,300	815	
Total Expenses	113,532	108,769	-4,763	
Over/Under	-5,417	-1,469	-3,948	

Note:

There were multiple one time transactions in March that complicate the numbers. For example we had Safe Harbor monies flowing in and out of the General Fund.

Also, we budgeted a one-time stock grant in March that will now occur in April which will also fund a \$5K mortgage principal reduction.

The real message is lower envelope giving YTD is being offset by lower expenses.
We need to maintain strong envelope contributions.



Our Countdown Hits a Target: TREES.TREES.TREES!

Save the Date! Anniversary Trees Planting! April 29!

Dedicate Anniversary Tree April 30!

1 Part of our vision for BLC is Creation Care. What better way to accomplish this than to plant 250 trees in the Brown Bridge Quiet Area and beautify our “neighborhood.” The anniversary task force has been looking forward to this event since its inception in May, 2016. The time has arrived for all of us to get on board.

THE HISTORY: Norm Fred came to our task force with the idea. Jim Hutchison, our contact person, has been in touch with Reb Ratliff of the Grand Traverse Conservation Department to work out a plan. We have waffled between 125 (for our 125th year) and 250 to allow for loss. With the generous help of Endowment Committee in providing funds, and searching for the right trees, we settled on 250. The plan is now coming to fruition.

THE PLAN: On **April 29th** -- as many as can hold a shovel, carry a small tree, push a wheelbarrow, tie deer abatement bags to trees, cheer on those who labor -- you are all invited to be part of this exciting event. Please find the sign-up sheet beginning April 1, and sign up to help! We seem to always count on the “other person” to get involved. Well, please join us in this opportunity to share of yourself.

2 Dedication Tree to be planted on our property in honor of our anniversary.

THE SOURCE: David Milarch of the Archangel Ancient Tree Archive in Copemish is known worldwide for cloning ancient trees. Pastor Fred Overdier was the first to acquaint us with David’s work. We are able to “buy” a clone of the Buckley Ancient Elm (400 years old). The tree is worth \$5000 and with pastor’s gracious relationship with David, it will cost us a donation of \$1000. If you would like to donate to help pay for the tree, please indicate “Tree Fund” on your donation.

THE DEDICATION:, the tree will be planted, thanks to our retiree Property Work group, on Tuesday April 25. The dedication ceremony will take place following the Jubilee Worship service on **April 30**.

TO SUM UP: Watch for the sign up opportunities starting **April 1** for our 250-tree planting event on **April 29** and more on the Dedication event on April **30**. Blessings to you for your involvement. Any questions, contact Jim Hutchison or Suzanne Lehto.



Strengthening the Church for Mission and Ministry in Costa Rica

The Costa Rican Lutheran Church (Iglesia Luterana Costarricense, ILCO) centers much of its mission on the most vulnerable populations – indigenous people, people living in poverty, immigrants, and people who are ill, among others. The church is quite small, but its reach is vast and, located in a region of the world that is dealing with significant migrant challenges due to violence; its call is clear. The ELCA has committed to supporting this church (and the Lutheran Church in Honduras) and helping strengthen these small churches that have such a significant impact.

In Costa Rica, the church welcomes Nicaraguan immigrants, informs them of their human rights, and accompanies them when their rights are violated. In addition, with the help of the church's legal-aid office, indigenous people have achieved legal citizenship and recovered their ancestral lands.

Honduras – A Companion Synod of the North/West Lower Michigan Synod

Honduras continues to be one of the poorest countries in the Western Hemisphere. The Lutheran church in Honduras does ministry in areas invaded by youth gangs and drug trafficking where violence envelops faith communities and forced migration to the U.S. is rampant. Within this context, the church has only one ordained pastor, along with a missionary from the Church of Sweden. The church relies on volunteer lay leaders who are highly committed but have limited access to formal education and theological training, especially in rural areas.



Lutheran-Catholic joint observance of 500th anniversary of the Reformation

On March 2, the ELCA Conference of Bishops' Ecumenical and Inter-Religious Committee and the United States Conference of Catholic Bishops' Ecumenical and Interreligious Affairs Committee gathered for a Lutheran-Catholic service in Chicago. This was a historic observance of the 500th anniversary of the Reformation. Presiding Bishop Elizabeth Eaton said, "The Lutheran-Roman Catholic joint prayer service, one of the fruits of 50 years of dialogue between our two churches, was a beautiful celebration of what we hold in common. We could see each other again as brothers and sisters in Christ. I pray that our increasing unity is a witness to our culture."

Keep Bethlehem Blooming

This is the final year of our three year Keep Bethlehem Blooming effort in preparation for celebrating Bethlehem's 125th Anniversary. It's been a significant success thanks to you!

We have accomplished much:

- A wonderful, visible, and very active new electronic sign
- New bicycle racks- that we obtained at no cost
- Multiple areas of new carpeting in worn high traffic areas
- New shades in Fellowship Hall- helping us stay warm in winter and cool in summer
- A wonderful Hearing Loop in the sanctuary to assist members and visitors in hearing the Good News
- An upgrading of our "Caring Table" collecting gifts for TCHS, Goodwill Inn, etc.
- The right-sizing of the grates on the side of the building to allow easier egress from the lower level
- A new bulb for the sanctuary projector (no small issue at @\$500)
- Altering the pews in the sanctuary to accommodate a row amenable to wheelchairs

Initially, we also supported a couple of areas that should be strictly in the operating budget- a Nursery Attendant and Vacation Bible School.

We are confident the congregation is enjoying these enhancements to the Bethlehem environment. This final year of shaping up to host our 125th Anniversary should allow us to accomplish another few projects. Please join in!



For 2017, the final season of **Keep Bethlehem Blooming**, the Stewardship Committee and Property Committee have suggested the following items to your Church Council for inclusion- and they have approved: The first three are the initial goal for this Spring.

Paint all exterior wood surfaces. This was last done in XXXX. Repair stucco ceiling along sanctuary wall as well. Two estimates are already in hand. Work will happen this Spring.
Estimate: \$6900

Repaint interior door jambs and sanctuary beams.
Estimate: \$3000

Repair parking lot pavement, reseal, and restripe.
Estimate: \$3000

Replace kitchen flooring. This is something of a contingency if the planned cleaning does not prove satisfactory. This effort may be aided by contributions from WELCA and the Funeral Committee. If so, it could move up the list.
Estimate: \$4800

125th Anniversary Tree. This is a hope of the 125th Anniversary Committee. The tree recommended by the Milarchs of the Arch Angel Tree Project is a "Buckley Elm". They put the worth of the tree at \$5,000, but will sell it Bethlehem for \$1,000. It will be about 14 feet tall when planted. Their family used to be connected to BLC.

Grand piano. There is a steady group of voices advocating for this enhancement to our worship space. A used baby grand in Northport was evaluated, but sold (@\$4000) before we could act. Other options are looking more dear.
Estimate: \$18000+

Install air conditioning in Fellowship Hall. This remains a goal.
Estimate: \$25,000

In addition to our Keep Bethlehem Blooming enhancements, necessary repairs are underway using our established **Asset Replacement Fund**. Those currently include:

Replacement of the flat roof located over the narthex "Gathering Space"; approx. XX years old; approx. XXX sq. feet. The plastic sheet under the gravel portion of the current roof is deteriorating resulting in leaks. We made some minor emergency repairs this Spring and need to fully address. The Council has endorsed this necessary repair.
Estimate: \$5350

Lead abatement on windows. A State Inspector found indications of lead based paint around the exterior windows of the Bethlehem Nursery School and they must be remediated. Two new wood windows can be purchased for about \$3000. Removal and disposal of the existing windows by the abatement firm and installing the windows would likely cost more than simply going the lead abatement route. New windows would probably provide increased energy efficiency. This cost should probably be covered by asset replacement funds.
Estimate: \$3500

Repair the leak in the wall between the men's restroom and the church office work space. Urine tainted water has been leaking into the work area for some time and this must be addressed. Currently, one urinal is unusable. This work is underway with Walters & Hemming. A portion of the impacted wall may have to be reconstructed as well.
Estimate: \$613

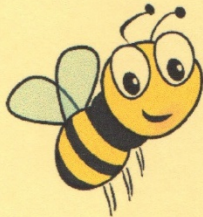
Clean or replace carpet in the church office work space. As the above leak is addressed, we will have to replace some stained and foul smelling carpet in the work area. We are working with Flood Fighters.
Estimate: \$1282

And, finally, the following are being undertaken within the constraints of the **Property Committee's Maintenance Budget** in the overall BLC Operating Budget:

20 Year Test of the Sprinkler System. This is mandatory.
Estimate: \$867

Kitchen floor and Fellowship Hall professional floor cleaning.
Estimate: \$600

New aluminum risers and replacement tables for the Fellowship Hall. The risers to facilitate concerts and events both in the sanctuary and the Fellowship Hall. The old wood ones that BLC has are very heavy and cumbersome. And many of the table at use in the Fellowship Hall have chips, dents, and missing pieces on the edges.
Estimate: \$TBD



Bee a part of KBB...let's keep buzzing...

At the end of this Keep Bethlehem Blooming effort, any remaining KBB funds will be shifted to the most appropriate ongoing Bethlehem fund as approved by the Church Council, with most going simply to the Asset Replacement Fund. One notable exception- funds in music area will go to Worship & Music.

There may be remaining funds for VBS...as a congregation member has pledged @ \$2500 for this year. We will speak with them about the handling of those funds.



Hey, it's a honey of a program...

The first two years of Keep Bethlehem Blooming generated over \$40,000... That's over \$20,000 average per year, and we'd like to exceed that average as we close this effort. Yes, "bee a part of it"!

You may make a donation at the Keep Bethlehem Blooming display that will be up in the Gathering Space after our Easter celebration, drop it off at the office addressed to our bookkeeper Mary Lou Deutsch, or simply put it in the collection plate. Please clearly note "Keep Bethlehem Blooming". Thank you for your supportive role in indeed keeping our Bethlehem building and grounds in peak condition to host our 125th Anniversary. Thanks be to God!





JACOB GRAF was presented his Bible on Sunday March 26th during the 11:00 service by instructor Dianne Blair. They spent four weeks learning many things including the books of the Bible, the authors, and different events which will guide Jacob as he goes through life. This vital ministry will be presented again next year.



FIRST COMMUNION CLASSES have been held on Wednesday evenings during Lent with Suzanne Lehto as instructor and eight children attending. The children will be receiving their first communion with their families during the Maundy Thursday service.

SUNDAY SCHOOL TEACHERS NEEDED: We are still looking for one or two people who would be willing to volunteer to teach during the 2017-18 school year. Grades affected are K-2nd and 3rd-6th. Our Sunday School material follows the lectionary. Please prayerfully consider enriching the lives of these young people (and you yourself will be enriched along the way!). Contact Nancy Ammann (946-8433) for further information and to volunteer!!

EASTER SUNDAY MOVIE!! During brunch on Easter Sunday the movie "The Easter Story" will be shown to the children. Watch the bulletin for further information.



UPCOMING EVENTS: April 30th - No Sunday School - Jubilee Sunday
April 9th - Palm Sunday - Sunday School as scheduled
April 16th - EASTER SUNDAY! Movie during brunch
May 21st - Game Day - Last day of Sunday School
May 21st - Recognition of BLC Graduates after 11:00

GENEROUS CONGRATIONAL GIFTS EXCEED THE SAFE HARBOR BUILDING CAMPAIGN GOAL

Additional donations for the Safe Harbor Building have been received bringing the total BLC congregational gift to \$15,773. Added to this will be the \$5,000 pledge from the Endowment Committee, which exceeds our \$20,000 campaign goal. Your generous level of giving and your enthusiastic service during our Safe Harbor housing week demonstrate true commitment to our mission to serve with love. Thank you for your gifts and service.

The following is a portion of the letter we received from Safe Harbor thanking us for our gift:

On behalf of Safe Harbor and the guests we serve, we thank you for your financial support of our effort to provide a secure and warm overnight seasonal shelter for the most vulnerable members of our community

*As you know Safe Harbor's mission is to recognize the dignity of those experiencing homelessness and to help protect their physical welfare by offering seasonal emergency shelter. Even though Safe Harbor will relocate operations to a permanent facility beginning with the 2017/18 season, its mission of recognizing the dignity of those experiencing homelessness and protecting their physical welfare by offering **Food, Shelter and Hope**, will not change*

Safe harbor's permanent facility will include a year-around Housing and Human Services Resource Center offering solution-oriented opportunities. Safe Harbor hopes that by providing easy access to other service providers included within the Continuum of Care, those suffering from homelessness will have a greater possibility of securing permanent housing.

BOOK CLUB



Book/Supper Discussion Group

We meet from 5 to 7 pm on the 4th Tuesday of the month. Join us, and if you have any questions, please contact Ellie Long at 935-4595.

April 25	<i>Ordinary Grace</i> by William Kent Krueger (novel)
May 23	<i>Our Souls at Night</i> by Kent Haruf (novel)
June 27	<i>All the Light We Cannot See</i> by Anthony Doerr (novel)
July	No Meeting—Film Festival
Aug. 22	<i>LaRose</i> by Louise Erdrich (novel)
Sept. 26	<i>The Nightingale</i> by Kristin Hannah (novel)

THANK YOU



Thank you so very much for the donations of CDs. We use the CDs to record the 8:45 am service. Copies are made and delivered to our Homebound Stars. A master copy is kept so that extra copies can always be made. Because of your generous donations, we now have lots of CDs. Special Thanks to: Shelly McAllister, Mary Lou Deutsch, Ellie Long, Jan and Butch Waisanen, an anonymous donor, and Marilyn Skay's donation of protective plastic Cd covers. Thank you and Blessings, Jan Stretlien.



Thank you to those who attended the March XYZ lunch; we had a very nice turnout. A special thanks to Tina Zinn, The Cheese Lady for the cheese samples and the very informative and entertaining program.

The April gathering will take place at noon on **Friday April 21**. The program will be presented by Dr. Paul Hanrahan, Audiologist of Family Hearing Care. There will be a pot luck lunch with ham provided by Oleson's Food Stores. Hope to see you there, and feel free to bring a friend and or a neighbor. Questions can be directed to Jan or Butch at 231-271-3802 or etwaisanen@centurytel.net

The BLC Fellowship Committee
invites everyone to Lenten Meals

The meals will be served on Wednesday evenings, beginning at 5:30pm as follows:

ONE MORE! Don't Miss It!

Wed. Apr 5: Baked potato bar w/butter, sour cream, shredded cheese, green onions & Chili, salad/ranch dressing, and ice cream for dessert.

Easter is two weeks away! Do you know of anyone who would like a ride to one of our church services? If so, please contact Jan Stretlien. phone: 231-947-3265 or email: jstretlien@gmail.com

Check out Rudy Kelly's adventures in New Zealand on her blog: www.rudykellyblog.wordpress.com

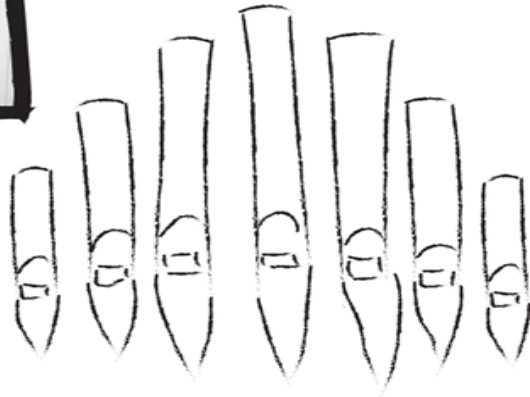
Thomas Bara

...in concert with special guests from Interlochen
Center for the Arts

Celebrating Bethlehem Lutheran Church and Habitat for Humanity, GTR



Thomas Bara
Instructor of Organ and Assistant Director
of Music, Interlochen Arts Academy and
Interlochen Arts Camp



Date: Saturday April 22th

Time: 6:00pm

Location:

Bethlehem Lutheran Church
1050 Peninsula Dr, Traverse City

Admission is FREE! Open to the public!

SUMMER CAMP!!

Summer camp registration is open for [ELCA Living Water Ministries!](#)

Bethlehem will be at Stony Lake Camp in New Era, MI July 9th - 14th & there are opportunities for all current 3rd - 12th grade youth.

Register online today & pay the \$100.00 non-refundable deposit to Living Water Ministries to confirm your child's spot at camp. Registration is filling up fast, so the sooner the better!

The financial breakdown for campers from BLC is...

- 33% BLC Youth Budget
- 33% BLC Fundraising Money Specific to Camp
- 33% Family Payment

If scholarship is needed, please talk with Pr. Paul. Any other questions? Check out the Living Water website at elcalivingwater.com &/or contact Pr. Paul in the church office (231-947-9880) or by e-mail at paul.busekist@bethlehemtc.org

ANNUAL SPRING EVENT

Attention: Ladies of all ages (0 - 100+)

Bethlehem Lutheran's Spring Event will be held **Friday, May 5.**

It will be a salad potluck and an evening of great entertainment.



Bring your family and friends. Please have your salads to the church by 6:15 pm.

Festivities begin at 6:30 pm. Sign up will be after services April 22/23 and April

29/30. We also need men to volunteer and help in the kitchen. Any questions,

call Cheryl Wegener at 231-258-4658.

We need volunteers to pick up our Home Bound members for this very special Easter Holiday. If you can help with please contact Jan Stretlien at 231-947-3265 or jstretlien@gmail.com. Thank you.

 In honor of Bethlehem's 125 year anniversary the worship and music committee would like to restore the custom of honoring new members of the family of God with a rose on the baptismal font. Those who wish to celebrate their new child or grandchild can contact committee chair, Barbara Oster at: beo6475@yahoo.com or via phone 668-7038. The cost is \$10.00 to be submitted to the church office, or labeled as such and placed in the collection plate. The rose and vase can be taken by the family after the 11:00 service on Sunday. 

Musicality

Another way to support your Bethlehem Music Department is to join one of the music groups. Depending on the one you join, you could be a part of services once every 2 months, once a month, once every three weeks, or about every other week. They all have different schedules. **What fits you best?**

Your choices are steel pans, bells, Worship Team, and choir. They rehearse once a week with trained directors and really build up quite a comradery. It's fun. Think about it.

Health Concerns

Jeri Boike, Richard Fernholz, Karen Anderson, Bob Jahnke, Christian Stretlien, Carol Collins, Dan Morley, Margie Whitney, Ava Oleson, Brenda Denoyer, Tom Miller, Thad Hellenga, Dee Springer, Kate Holtfreter, Virginia Fleming, Richard Oster, and Paul & Jessica Wiemerslage

Grand Traverse Pavilions: Walter & Jenni Goff, Virginia Fleming

French Manor: Martha LaVire; **Joy Givers:** Hazel Lautner

Traverse Manor: Margie Whitney, Juanita Lautner, Jane Witkop

French Manor Lafranier: Jo Hasse;

Culver Meadows AFC: Janet Hinds

Boardman Lake Glens: Ingie Thomas

Hospital Visits: Please let the church office know if you are going into the hospital for a scheduled procedure or an emergency so Pastor Paul can visit you.



BLC's PRAYER CHAIN is always seeking partners in prayer.

More volunteers are needed for this crucial ministry.

For more information or to set the Prayer Chain in motion, call Jan Stretlien @ 947-3265 or email jstretlen@gmail.net.

Are you checking for the latest BLC updates at: www.bethlehemtc.org?

You saw Norm and others take the photos...be sure you see them at www.bethlehemtc.org!

Good News...and great news...at www.bethlehemtc.org...

BLC Contacts

Church Office

Pastor Paul Busekist	paul.busekist@bethlehemtc.org
Deacon Julia Nelson	julia.nelson@bethlehemtc.org
Diane McWethy, Admin. Asst.	diane.mcwethy@bethlehemtc.org
Mary Lou Deutsch, Interim Bookkeeper	bookkeeper@bethlehemtc.org
Sharon Weller	sharon.weller@bethlehemtc.org
Website	www.bethlehemtc.org

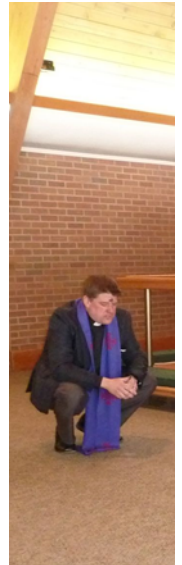
Church Council

Phil Anderson, President	president.council@bethlehemtc.org
Jim Parkinson, Vice President	vicepresident.council@bethlehemtc.org
Tom Rockne, Secretary	secretary.council@bethlehemtc.org
Dave Pepler, Treasurer	treasurer@bethlehemtc.org
Shelly McAllister, Financial Sec.	secretary.council@bethlehemtc.org
Jan Stretlien, Christian Care Giving	christiancaregiving.committee@bethlehemtc.org
Dianne Blair, Christian Ed.	christianeducation@bethlehemtc.org
Barbara Overdier, Evangelism	evangelism@bethlehemtc.org
_____, Fellowship	fellowship.committee@bethlehemtc.org
Barbara Overdier, Membership	membershipevangelism.committee@bethlehemtc.org
Leonard Graf, Personnel	personnel.committee@bethlehemtc.org
Carl Lehto, Property	property.committee@bethlehemtc.org
_____, Social Ministry	socialministry.committee@bethlehemtc.org
_____, Stewardship	stewardship.committee@bethlehemtc.org
Barbara Oster, Worship and Music	worship.committee@bethlehemttc.org
Jodi, Youth/Y2A	youth.committee@bethlehemtc.org

If you have an interest in serving on any of the above Committees,
Please contact the Committee Chairperson(s).



Put your phone to good use...take a picture of yourself, your family, pretty flowers...help fill this page!



Sun	Mon	Tue	Wed	Thu	Fri	Sat
8:45am - Worship-S 9:45am - Children's/Christia 9:45am - LentensPrivaUDis 11am - Modern Worship - S 2pm - Christensen SG	10am - AInanon-B 11:15am - StaffMeeting-C 3:30pm - MusicLessonsSha 5pm - Sew Pieceful Quilters 6:15pm - ApprenticesSeries- 7:30pm - Gambler's Anon	9am - ACOA 9am - LSSM-LWR Sewing 9am - Prayer Shawl 9am - Work Group 3pm - LessonsWarne 5pm - Book/Supper Club	5:30pm - LentenNight (FH) 6:15pm - 1stCommunionCla	3pm - LessonsWarne 5:30pm - ACOA (LR) 6:15pm - BellChoir Reh 6:30pm - Gambler's 7:30pm - Choir Reh	10am - AInanon-B 3:30pm - RehearsalF/SJazz	10am - ScrapbookCrop (FH) 5pm - Worship-S
8:45am - Worship-S 9:45am - Children's/Christia 9:45am - LentensPrivaUDis 11am - Modern Worship - S 12:30pm - MissionTripPlan	10am - AInanon-B 11:15am - StaffMeeting-C 6pm - Sew Pieceful Quilters 7:30pm - Gambler's Anon	9am - ACOA 9am - LSSM-LWR Sewing 9am - Prayer Shawl 9am - Work Group 3pm - LessonsWarne 6pm - Christian Ed Mtg.	5:30pm - LentenNight (FH) 5:30pm - Senior High Night	3pm - LessonsWarne 5:30pm - ACOA (LR) 6:15pm - BellChoir Reh 6:30pm - Gambler's 7:30pm - Choir Reh	10am - AInanon-B 3:30pm - RehearsalF/SJazz	8:30am - AAUWMtg-FH 5pm - Worship-S
8:45am - Worship-S 9:45am - Children's/Christia 9:45am - LentensPrivaUDis 11am - Modern Worship - S	10am - AInanon-B 11:15am - StaffMeeting-C 6pm - Sew Pieceful Quilters 7:30pm - Gambler's Anon	9am - ACOA 9am - LSSM-LWR Sewing 9am - Prayer Shawl 9am - Work Group 10am - Finance-CR	9:30am - QuiltersByBay @ 6pm - Confirmation-YR	9am - Baby Pantry-FH 1pm - RebeccalAnn Circle 3pm - LessonsWarne 5:30pm - ACOA (LR) 6:30pm - Gambler's 7pm - Maundy Thursday	10am - AInanon-B 7pm - Good Friday Worship	5pm - Worship-S 7pm - Easter Vigil
8:45am - Worship-S 9:45am - Children's/Christia 9:45am - LentensPrivaUDis 11am - Modern Worship - S	10am - AInanon-B 11:15am - StaffMeeting-C 7pm - Monroe SG @ Betty 7:30pm - Gambler's Anon	9am - ACOA 9am - LSSM-LWR Sewing 9am - Prayer Shawl 9am - Work Group 3pm - LessonsWarne	6pm - Confirmation (YR)	3pm - LessonsWarne 5:30pm - ACOA (LR) 6:15pm - BellChoir Reh 6:30pm - Gambler's 7:30pm - Choir Reh	10am - AInanon-B 6pm - Food for Thought	9am - AInanonCitywide 5pm - Worship-S
8:45am - Worship-S 9:45am - Children's/Christia 11am - Modern Worship - S	10am - AInanon-B 11:15am - StaffMeeting-C 6pm - Sew Pieceful Quilters 7:30pm - Gambler's Anon	9am - ACOA 9am - LSSM-LWR Sewing 9am - Prayer Shawl 9am - Work Group 3pm - LessonsWarne 5pm - Book/Supper Club	6pm - Confirmation (YR)	9am - Baby Pantry-FH 3pm - LessonsWarne 5:30pm - ACOA (LR) 6:15pm - BellChoir Reh 6:30pm - Gambler's 7:30pm - Choir Reh	10am - AInanon-B 3:30pm - RehearsalF/SJazz 5pm - B.L.U.E.S.FrisbeeGolf	5pm - Worship-S
8:45am - Worship-S 9:45am - Children's/Christia 11am - Modern Worship - S	10am - AInanon-B 11:15am - StaffMeeting-C 6:30pm - Wor. & Mus. Mtg- 7:30pm - Gambler's Anon	9am - ACOA 9am - LSSM-LWR Sewing 9am - Prayer Shawl 9am - Work Group 3pm - LessonsWarne	5:30pm - Senior High Night	3pm - LessonsWarne 5:30pm - ACOA (LR) 6:15pm - BellChoir Reh 6:30pm - Gambler's 7:30pm - Choir Reh	10am - AInanon-B 1pm - SpringFlsetuup 3:30pm - RehearsalF/SJazz 6:30pm - SPRINGFLING	12pm - KellyNigborMemor 5pm - Worship-S

Because of the many activities here at BLC, this is only a partial calendar. You can view the entire calendar at <http://www.bethlehemtc.org/community-calendar> or call the office at 947-9880 for more information (and corrections/additions).