



Bethlehem

LUTHERAN CHURCH

March
2017

Traverse City, MI 49686
(231) 947-9880

Website: www.bethlehemtc.org
Email: bethlehem@bethlehemtc.org

Building Hours:
Monday – Thursday, 9am to 3pm

Office Hours
Monday – Thursday, 9am to 3pm

Worship Times:

Saturday: 5 pm Celebrate! Worship
Sunday: 8:45 am Traditional Worship
9:45 am Education Hr.
11 am Modern Worship

Communion at all services

Follow the STAR to Bethlehem!

Our Mission...

“We journey with God, to serve with love”

Our Vision...

“As a community of believers journeying with God together, we at Bethlehem are called to serve with love by growing a premier youth ministry; enlivening Christian discipleship through lifelong learning, care, and spiritual formation; fostering a vibrant and inspiring worship experience; utilizing our natural setting and location for faithful creation care and outdoor ministry; and opening our doors always to be a “campus at the crossroads” for the mission and ministry of Jesus Christ.”



***“Return to the LORD, your God,
who is gracious and merciful, slow
to anger,
and abounding in steadfast love.”***



When Jesus told his disciples in John chapter 6 that he was the true “life of the world” and that “whoever eats [the living bread of God] will live because of me,” his disciples – in a moment of real honesty – said this to their rabbi and Lord: “This teaching is difficult; who can accept it?” (v.60)

Jesus’ response was one we do not often hear: “Does this offend you?”

He went on to say that our human flesh (and its desires) are “useless” when it comes to what really gives life; that source is the Spirit of God, with the words of life and love that ARE the Son...and that no one can truly come to Jesus without being granted that life by the Creator. Because of this mandate of love – to embody the Son, and listening to God – “many of the disciples turned back and no longer went about with [Jesus]” (v.66) I think it’s fair to say that departure concerned Jesus greatly. John continues: “So Jesus asked the twelve, ‘Do *you* also wish to go away?’”

Then comes the famous line from Peter that we now know as our regular (i.e. non-Lenten) Gospel acclamation for our traditional service: “Lord, to whom shall we go? You have the words of eternal life.” (John 6:68)

Of course, we add that holy “Allelu-word” to either side of that verse (the word we do not speak in Lent! ☺), but two take-aways are there: (1) for many believers, the words of the Gospel are difficult, and may seem downright “offensive” because they require us to think, pray, love and act differently than the world does – putting the truth and the gospel first; and (2) that when it comes to receiving the words and essence of life eternal, there is nowhere else to go but the God, who alone has “the words of eternal life.”

For Lent’s “Gospel Acclamation,” however, we shift gears in traditional worship and sing a different song, though it too is based on a scriptural verse: Joel 2:2-13:

***“Return to the LORD, your God,
for he is gracious and merciful,
slow to anger, and abounding in steadfast love.***

This is Lent: somewhere between the almost-offensive-ly good gospel (that we often walk away from) and the prophetic call to “return to Lord” – our God – who is gracious, merciful, patient and full of love.

And it is most certainly a journey, for Christ and for us. Join me on this journey, together as we explore the journey of Christ to the cross and another important milestone to our faith identity: the 500th year of the Lutheran Reformation – this Lenten season we will spend our Wednesday evenings watching and discussing the video “Rick Steve’s *Luther and the Reformation*” – an hour-long video split into 5 sections of roughly 10 to 12 minutes each. We are also reminded of a third milestone (besides the cross and the Reformation): our 125th anniversary as a congregation...which we continue together as it culminates later this year.

Cheers, reflection and grace for the days ahead...

With you on the journey, in all ways,

Pastor Paul

President's Corner

President's Corner March 2017 Star

March is the month of transition. The days get longer, the temperatures start a slow rise, and Spring begins to creep into our thinking. Seed catalogues turn into purchases. Ash Wednesday brings thoughts of Easter and the promise of Resurrection. The tomb is empty and the scriptures are fulfilled!

Lent is a time for reflection and prayer. Are you searching for something more? Tired of running in circles, but not really living life with direction, purpose or passion? It's pretty easy to get caught up in the drama of sports, relationships, family, and work. Our lives are filled with distractions that take us away from living a life with Christ. We try to fill the emptiness inside us with mindless TV, meaningless chatter on social media, stimulants, food, too many activities, or other irrelevant stuff. We run away from life and from God. Lent is a great time to "repent" -- to return to God and re-focus our lives to be more in line with Jesus. It's a 40 day trial run in changing your lifestyle and letting God change your heart.

Your Church Council has been busy at work making sure all the projects that need attention are getting done. We have approved the repair of the leaking roof in the Gathering Space. This will be accomplished as soon as nice weather returns. We are evaluating the floor in the kitchen with an eye toward possible replacement. The tiles are quite old and may need to be taken up and replaced. Council is also working closely with Pastor Paul on getting him some help over the coming months. Because of the extended leave for Deacon Julia, all the pastoral responsibilities will fall to Pastor. To prevent exhaustion, we are looking to bring on some supply pastors and a possible substitute Youth Minister. These are challenges that need to be addressed so we ask for your thoughts and prayers. As you know, the church is home to a privately run Day Nursery. To comply with state license requirements, the windows and surrounding area were checked for lead paint. Unfortunately, lead was found in the paint used on the outside windows. This will need to be remediated by a contractor licensed to do this type of work.

The Finance Committee reported a positive start to the year. I want to thank each of you for heading our call to giving. While one month does not make a trend, I am hopeful that your generosity and giving will continue all year. To maintain our programs and cover our obligations, we need your commitment.

We are still looking for a few willing people to serve on our Membership and Stewardship Committees. There is much work to be done in these areas and to be successful we need your help. If you would like to be a part of these teams, please contact any council member. If you really want to step up and make a difference, it's not too early to be thinking about being a member of your Church Council. I would be happy to discuss this with you at any time. Please contact me at your convenience.

In all your ways acknowledge Him, and He will make straight your paths." Proverbs 3:6

My hand in yours, our hearts with Him,

Phil Anderson, Church Council President



'Let's Go for a Run'

Zach Courter, serving as one of the YAGM country co-coordinators in Hungary for the Central Europe program, has a goal to run 1,031 miles between Jan. 1 and the 500th anniversary of the Reformation on Oct. 31 (10/31 – 1,031). Follow his journey and learn how his running is helping him learn about the ways we are all witnessing God's love around the world.

<https://zachandrachel.wordpress.com/2017/01/01/lets-go-for-a-run/>

'You've Got a Friend in Me'

Erik Bay is serving as a YAGM in the United Kingdom and wrote a blog reflecting on the half-way point of his YAGM year. Erik writes, "So, as the realization of having under 6 months left here settles in, I am motivated to continue walking alongside the good people of Bradford, England. There's still so much to learn and ways for me to grow. Indeed, there is so much for all of us to learn and grow from." How will you walk alongside your community in these next six months? What are you excited to learn and grow from in the months ahead?

Pick up a copy of the March issue of *Living Lutheran* – near the building entrance. Check out news about ELCA Global Mission.

"Descent into Wilderness" by Twila Schock, page 5. Twila speaks about a wonderful conversation she had with Bette. She is talking about retired missionary, **Bette Ann McCrandall**, whom BLC supported for many years.

"Called, Gathered and Sent" by Anne Basye, pages 14-19. These brief vignettes provide a wonderful view into the variety and scope of ELCA missionary work around the world. "Today ELCA missionaries partner with existing church bodies to spread the good news in their unique contexts:"

- Supporting health and healing in Tanzania
- Grace in the highlands of Bolivia
- Learning to be a pastor in Argentina
- Outreach in the outback [Australia]
- Telling the story in Jerusalem
- Nurturing gifts in Southern Africa
- Different roles, Same mission, Church support

God's Work. Our Hands.



BIBLES FOR 3RD-6TH GRADERS: We are pleased to be gifting our Third to Sixth Graders with Bibles this year. There will be four weeks of orientation on Bible content. Classes run from February 26th through March 19th during the 9:45 AM Sunday School hour. Instructors are Dianne Blair and Donna Novak. Bibles will be presented to the children during a Sunday service following the orientation. This is a vital ministry for our children

FIRST COMMUNION CLASSES! Children in grades 1-5 are invited to attend classes on Lenten Wednesday evenings beginning March 8th. Children must either be baptized or planning to be baptized. Class will begin promptly at 6:15 (following the Lenten supper) and will end at 7:15 to allow families to attend a short worship service. Please contact Suzanne Lehto (223-7187) if you have any questions.

LENTEN WEDNESDAY NIGHTS: After supper on each Wednesday night during Lent, children who are not attending the First Communion Class can spend some time celebrating the 500th anniversary of The Reformation learning about Martin Luther.. We have stories, crafts and games planned.

NEEDED! TWO SUNDAY SCHOOL TEACHERS: We are in need of two Sunday School teachers to begin the 2017-18 term of Sunday School. Grades affected are Kindergarten through Second Grade and Third through Sixth Grades. Our Sunday School material follows the lectionary.. Please prayerfully consider one of these positions. Contact Nancy Ammann (946-8433) for further information and to volunteer!!



2017 Safe Harbor Week at Bethlehem

A cadre of enthusiastic volunteers, charged with Christ's message to love and serve our neighbors, welcomed into our church persons experiencing homelessness during our Safe Harbor housing week, February 4 - 11. About 35 men and women each night were given a hot evening meal, a safe place to sleep, and breakfast. About 85 BLC volunteers cooked, served, cleaned, supervised, and purchased groceries in support of our mission to the homeless. An additional 5 persons from other churches assisted our program. Through our gift of service we acted as the hands, feet, and soul of Jesus. And there is a return gift to us: It is the gift of recognition that our guests were our neighbors worthy of support, encouragement, and love, rather than persons to be avoided and rendered invisible.

Next winter the homeless will be housed in the Safe Harbor Emergency Housing Shelter on Wellington Street that is currently being renovated. Our responsibilities for our Safe Harbor week, probably in late January or early February, will remain similar to what we've done in the past: providing meals and snacks, overnight supervision, cleaning, and creating a welcoming and encouraging environment.

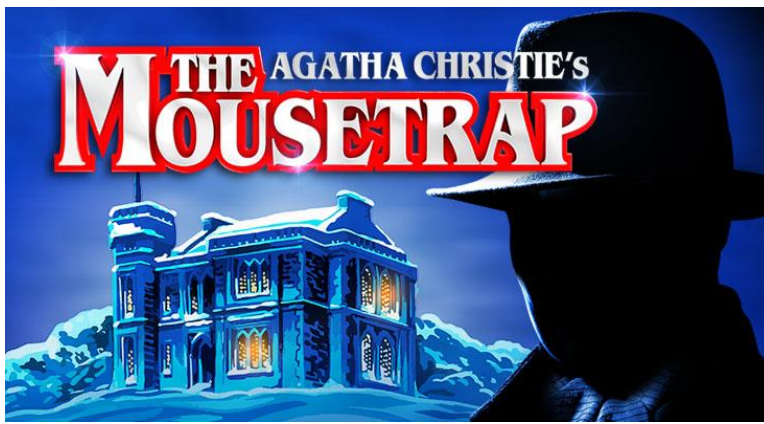
Members of the congregation have responded generously to our campaign to create a \$20,000 donation from BLC in support of the renovation of the building. Congregational donations to the campaign will be sent to the Safe Harbor organization by mid-March. We thank you for your donations. A full campaign report will be in the April STAR. Contributions to BLC in name of the Safe Harbor building may still be made.

Lenten Luncheon Series: Called to Life, Called to Love

The entire community is invited to a Lenten Luncheon Series being sponsored by Church Women United of Grand Traverse Area.

The luncheons are scheduled each Thursday during Lent, March 2 thru April 6, 2017. They all will be held in the Fellowship Hall of the Presbyterian Church of Traverse City. The church is located at 701 Westminster Road, Traverse City 49686. The time for the luncheons is 11:30 AM-1:00 PM.

Each week a local clergy person will lead attendees in a devotion based on the theme, "Called to Life, Called to Love." Journeying together through these Lenten Luncheons, we will realize Life in new ways.



SAVE THE DATE!! The Fellowship Committee is organizing an outing to the Old Town Playhouse for the matinee performance of Agatha Christie's Mousetrap . It will be March 19 at 2PM. More information to follow in weekly bulletin.

"Reformation 500 Book Store" comes to Bethlehem this March!

For two weekends (and two Wednesdays) in the beginning of Lent, BLC will host a display table of several new Lutheran books on March 5 & 12, available for mail order (i.e. not direct purchase), on March 18 & 25. They will also be available for perusal & ordering on Lenten Wednesdays. Prices on books will be heavily reduced during this time frame (by as much as 50% off retail price), so please make a point to stop by the Reformation 500 table in the Gathering Space soon. Questions can be directed to Barbara Overdier (boverdier@yahoo.com), Nancy Ammann (nmammann@gmail.com) or Jan Stretlein (jstretlien@gmail.com).

Anniversary Time Capsule

In 1962, Bethlehem changed from the Augustana Synod and joined the newly-formed Lutheran Church in America (LCA). Our fulltime pastor, Rev. Lloyd Hubert, along with his wife Betty and two sons Steve and Timothy, built a parsonage when the congregation purchased a residential lot on Peninsula Court. Steve and Chris Hubert are current members at Bethlehem.





Thank you to everyone who attended the February lunch and program. Thank you to Lori Wells of the Senior Center Network for the great program and all the valuable information about what is available at the center.

The next gathering will take place on Friday March 17th, pot luck lunch at noon with program to follow. Tina Zinn The Cheese Lady will tell us all about cheese, her store is located at 600 west front street, TC. All are welcome to attend, bring a friend and or neighbor. Questions can be answered by Jan or Butch, 231-271-3802 or etwaisanen@centurytel.net

The BLC Fellowship Committee
invites everyone to Lenten Meals

The meals will be served on Wednesday evenings, beginning at 5:30pm as follows:

Wed. Mar 8: Pancakes, sausages, butter, syrup, strawberries & fruit cups.

Wed. Mar 15: Cabbage hamburger soup, crackers, bread & butter, salad/ranch dressing and St. Patrick's cookies & ice cream for dessert.

Wed. Mar.22: Morley Soup, crackers, bread rolls and butter, salad/ranch dressing and PIES made by Connie Christopherson for dessert.

Wed. Mar.29: Chili w/shredded cheese & sour cream, salad/ranch dressing, crackers, bread & butter, and ice cream for dessert.

Wed. Apr 5: Baked potato bar w/butter, sour cream, shredded cheese, green onions & Chili, salad/ranch dressing, and ice cream for dessert.

Check out Rudy Kelly's adventures in New Zealand on her blog: www.rudykellyblog.wordpress.com

First Communion Classes during Lent

First through fifth graders who have not had First Communion Training, and have been baptized (or are considering baptism), are invited to join us during the five Wednesday evenings during Lent: March 8, 15, 22, 29 and April 5. Their first communion will be celebrated on Maundy Thursday, April 13. Parents are also invited to join us. Suzanne Lehto and Pastor Paul will be leading the class.

There is a Lenten supper at 5:30pm. Our class will begin promptly at 6:15 in the second classroom on the lower level. We will finish our time together at 7:15, allowing families to attend a short worship service. Please RSVP to Suzanne (223-7187) by March 1.

SUMMER CAMP!!

Summer camp registration is open for [ELCA Living Water Ministries!](#)

Bethlehem will be at Stony Lake Camp in New Era, MI July 9th - 14th & there are opportunities for all current 3rd - 12th grade youth.

Register online today & pay the \$100.00 non-refundable deposit to Living Water Ministries to confirm your child's spot at camp. Please register & pay deposit by March 1st to receive the best price for summer camp. The sooner, the better.

The financial breakdown for campers from BLC is...

- 33% BLC Youth Budget
- 33% BLC Fundraising Money Specific to Camp
- 33% Family Payment

If scholarship is needed, please talk with Pr. Paul. Any other questions? Check out the Living Water website at elcalivingwater.com &/or contact Pr. Paul in the church office (231-947-9880) or by e-mail at paul.busekist@bethlehemtc.org

TREASURER UPDATE

February monthly numbers for the **General Fund** on a cash basis are shown below.

February 2017	Actual	Budget	Variance	Key Message
Total Income	28,424	31,742	-3,318	One-time \$1,500 Trapp Grant income not realized in Feb.
Total Expenses	30,518	33,209	-2,691	Less spending in Property, Social Ministry and Stewardship
Over/Under	-2,094	-1467	-627	\$627 worse against budget for February

Year To Date numbers thru February 2017 for the **General Fund** on a cash basis are shown below.

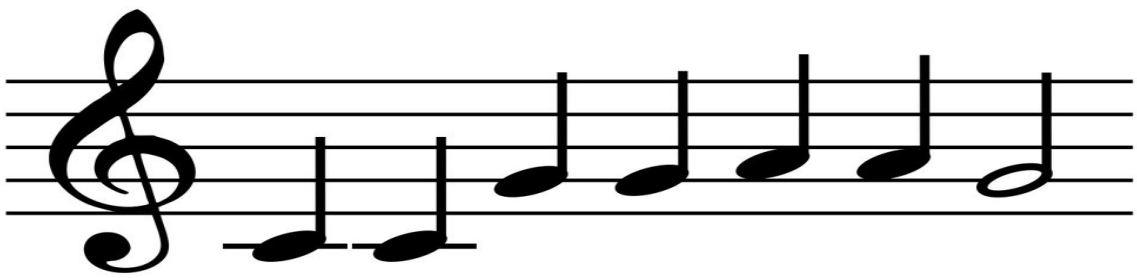
YTD 2017	Actual	Budget	Variance	Key Message
Total Income	65,355	67,255	-1,900	Income less than budgeted
Total Expenses	62,904	64,954	-2,050	Expenses less than budgeted
Over/Under	2,451	2,301	150	\$150 ahead of budget YTD due to lower expenses

If you are a Thrivent Member you have until March 31, 2017 to designate where you would like your "Choice" dollars to be sent for a charity of your choice. Bethlehem is eligible to be selected for your Choice Dollars.

You can go online at: www.Thrivent.com/thriventchoice or Phone: 800-847-4836 and say "Thrivent Choice" at the prompt.

If you do not select where you wish your dollars to go Thrivent will select a charity to send this money to.





Musicality

Another way to support your Bethlehem Music Department is to join one of the music groups. Depending on the one you join, you could be a part of services once every 2 months, once a month, once every three weeks, or about every other week. They all have different schedules. **What fits you best?**

Your choices are steel pans, bells, Worship Team, and choir. They rehearse once a week with trained directors and really build up quite a comradery. It's fun. Think about it.



In honor of Bethlehem's 125 year anniversary the worship and music committee would like to restore the custom of honoring new members of the family of God with a rose on the baptismal font. Those who wish to celebrate their new child or grandchild can contact committee chair, Barbara Oster at: beo6475@yahoo.com or via phone 668-7038. The cost is \$10.00 to be submitted to the church office, or labeled as such and placed in the collection plate. The rose and vase can be taken by the family after the 11:00 service on Sunday.



Book/Supper Discussion Group

We meet from 5 to 7 pm on the 4th Tuesday of the month Join us & if you have any questions, please contact Ellie Long at 935-4595.

- | | |
|----------|--|
| Mar.28 | <i>Dead Wake! The Last Crossing of the Lusitania</i> by Erik Larson (non-fiction) |
| April 25 | <i>Ordinary Grace</i> by William Kent Krueger (novel) |

Health Concerns

Jeri Boike, Richard Fernholz, Karen Anderson, Bob Jahnke, Christian Stretlien, Carol Collins, Dan Morley, Margie Whitney, Ava Oleson, Brenda Denoyer, Tom Miller, Thad Hellenga, Dee Springer, Kate Holtfreter, Virginia Fleming, Bert Plumley, Richard Oster and Tom Christopherson

Grand Traverse Pavilions: Walter & Jenni Goff, Virginia Fleming

French Manor: Martha LaVire; **Joy Givers:** Hazel Lautner

Traverse Manor: Margie Whitney, Juanita Lautner, Jane Witkop

French Manor Lafranier: Jo Hasse;

Culver Meadows AFC: Janet Hinds

Boardman Lake Glens: Ingie Thomas

Hospital Visits: Please let the church office know if you are going into the hospital for a scheduled procedure or an emergency so Pastor Paul can visit you.



BLC's PRAYER CHAIN is always seeking partners in prayer.

More volunteers are needed for this crucial ministry.

For more information or to set the Prayer Chain in motion, call Jan Stretlien @ 947-3265 or email jstretlen@gmail.net.

Are you checking for the latest BLC updates at: www.bethlehemtc.org?

You saw Norm and others take the photos...be sure you see them at www.bethlehemtc.org!

Good News...and great news...at www.bethlehemtc.org...



Habitat for Humanity[®]

Grand Traverse Region

presents...

Thomas Bara

...in concert with special guests from Interlochen
Center for the Arts

Celebrating Bethlehem Lutheran Church and Habitat for Humanity, GTR



Thomas Bara

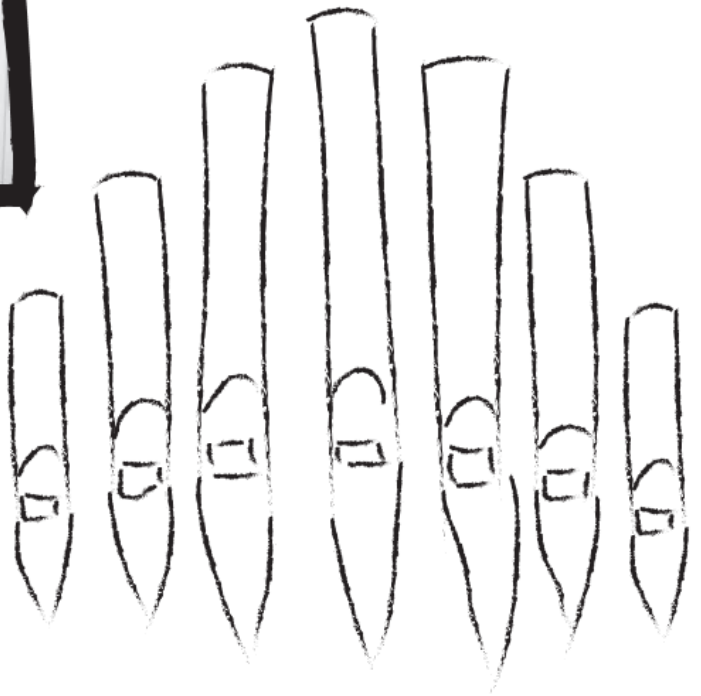
Instructor of Organ and Assistant Director
of Music, Interlochen Arts Academy and
Interlochen Arts Camp

Date: Saturday April 22th

Time: 6:00pm

Location:

Bethlehem Lutheran Church
1050 Peninsula Dr, Traverse City



Admission is FREE! Open to the public!

BLC Contacts

Church Office

Pastor Paul Busekist	paul.busekist@bethlehemtc.org
Deacon Julia Nelson	julia.nelson@bethlehemtc.org
Diane McWethy, Admin. Asst.	diane.mcwethy@bethlehemtc.org
Mary Lou Deutsch, Interim Bookkeeper	bookkeeper@bethlehemtc.org
Sharon Weller	sharon.weller@bethlehemtc.org
Website	www.bethlehemtc.org

Church Council

Phil Anderson, President	president.council@bethlehemtc.org
Jim Parkinson, Vice President	vicepresident.council@bethlehemtc.org
Tom Rockne, Secretary	secretary.council@bethlehemtc.org
Dave Pepler, Treasurer	treasurer@bethlehemtc.org
Shelly McAllister, Financial Sec.	secretary.council@bethlehemtc.org
Jan Stretlien, Christian Care Giving	christiancaregiving.committee@bethlehemtc.org
Dianne Blair, Christian Ed.	christianeducation@bethlehemtc.org
Barbara Overdier, Evangelism	evangelism@bethlehemtc.org
_____, Fellowship	fellowship.committee@bethlehemtc.org
Barbara Overdier, Membership	membershipevangelism.committee@bethlehemtc.org
Leonard Graf, Personnel	personnel.committee@bethlehemtc.org
Carl Lehto, Property	property.committee@bethlehemtc.org
_____, Social Ministry	socialministry.committee@bethlehemtc.org
_____, Stewardship	stewardship.committee@bethlehemtc.org
Barbara Oster, Worship and Music	worship.committee@bethlehemttc.org
Jodi, Youth/Y2A	youth.committee@bethlehemtc.org

If you have an interest in serving on any of the above Committees,
Please contact the Committee Chairperson(s).



Safe Harbor Prep,
Mardi Gras Dinner
Fundraiser, recital,
and more...

Sun	Mon	Tue	Wed	Thu	Fri	Sat
26 8:45am - Worship-S 9:45am - Adult 9:45am - Children's/Christia 11am - Modern Worship - S 3pm - BATA Pick Off	27 10am - AInnon-B 11:15am - StaffMeeting-C 6:15pm - ApprenticeSeries- 6:30pm - Wor. & Mus. Mtg- 7:30pm - Gambler's Anon	28 9am - ACOA 9am - LSSM-LWR Sewing 9am - Prayer Shawl 9am - Work Group 3pm - LessonsWarne 4:30pm - AAUW-S 6pm - Christian Ed Mtg.	1 5:30pm - Senior High Night 7pm - Ash Wednesday	2 3pm - LessonsWarne 5:30pm - ACOA (LR) 6:15pm - BellChoir Reh 6:30pm - Gambler's 7:30pm - Choir Reh	3 10am - AInnon-B 3:30pm - Rehearsal/Sluazz 6pm - Food for Thought 7pm - Bridge-OS	4 5pm - Worship-S
12 8:45am - Worship-S 9:45am - Adult 9:45am - Children's/Christia 11am - Modern Worship - S	13 10am - AInnon-B 11:15am - StaffMeeting-C 6pm - Sew Piecetail Quilters 6:15pm - ApprenticeSeries- 7:30pm - Gambler's Anon	14 9am - ACOA 9am - LSSM-LWR Sewing 9am - Prayer Shawl 9am - Work Group 10am - Finance-CR 12pm - Sarah Circle 3pm - Executive	15 5:30pm - LentenNight (FH) 6:15pm - 1stCommunionCia	16 3pm - LessonsWarne 5:30pm - ACOA (LR) 6:15pm - BellChoir Reh 6:30pm - Gambler's 7:30pm - Choir Reh	17 10am - AInnon-B 3:30pm - Rehearsal/Sluazz	18 10am - Scrapbook Club 12pm - DrivErd 5pm - Worship-S
19 8:45am - Worship-S 9:45am - Adult 9:45am - Children's/Christia 11am - Modern Worship - S 12pm - DrivErd	20 10am - AInnon-B 11:15am - StaffMeeting-C 3pm - Oster Sg (C) 6:15pm - ApprenticeSeries- 7pm - Monroe Sg @ Betty 7:30pm - Gambler's Anon	21 9am - ACOA 9am - LSSM-LWR Sewing 9am - Prayer Shawl 9am - Work Group 10am - Pr. Conference- Tm 3pm - LessonsWarne 6pm - Council Meeting 6:15pm - SteelPansReh	22 5:30pm - LentenNight (FH) 6pm - Confirmation (YR) 6:15pm - 1stCommunionCia	23 9am - Baby Panty-FH 12pm - Clergy and Pie 3pm - LessonsWarne 5:30pm - ACOA (LR) 6:15pm - BellChoir Reh 6:30pm - Gambler's 7:30pm - Choir Reh	24 10am - AInnon-B 3:30pm - Rehearsal/Sluazz	25 10am - Faith Okemus - 12pm - DrivErd 5pm - Worship-S
26 8:45am - Worship-S 9:45am - Children's/Christia 11am - Modern Worship - S	27 10am - AInnon-B 11:15am - StaffMeeting-C 6pm - Sew Piecetail Quilters 6:15pm - ApprenticeSeries- 7:30pm - Gambler's Anon	28 9am - ACOA 9am - LSSM-LWR Sewing 9am - Prayer Shawl 9am - Work Group 3pm - LessonsWarne 5pm - Book/Supper Club 6:15pm - ECD Meeting-C	29 5:30pm - LentenNight (FH) 6:15pm - 1stCommunionCia	30 3pm - LessonsWarne 5:30pm - ACOA (LR) 6:15pm - BellChoir Reh 6:30pm - Gambler's 7:30pm - Choir Reh	31 10am - AInnon-B 3:30pm - Rehearsal/Sluazz	1 10am - Faith Okemus - 12pm - DrivErd 5pm - Worship-S

Because of the many activities here at BLC, this is only a partial calendar. You can view the entire calendar at <http://www.bethlehemtc.org/community-calendar> or call the office at 947-9880 for more information (and corrections/additions).