

Fourth Sunday after Pentecost

July 6, 2025 – 10am

Modern Worship, ELW Setting 4



Prelude Music

Announcements

Confession and Forgiveness

P: In the name of the Father, and of the ☩ Son, and of the Holy Spirit.

C: Amen.

P: Baptized into Christ, let us confess our sin.

Silence is kept for reflection.

P: Merciful God,

C: ...you free us to love others, but we neglect our neighbors and follow our own way. You lead us by the Spirit of joy and peace, but we turn away from the abundant life you offer. You surround us with patience, kindness, and generosity, but we grow weary in doing what is right. In your mercy, forgive us. Do not give up on us. Heal us, break our bonds, and show us the path of life. Amen.

P: You belong to Christ Jesus and you are God's children through faith. In the cross of ☩ Christ, and through the power of the Holy Spirit, your sins are forgiven. Clothed with Christ, you are a new creation.

C: Amen.

Gathering Song:

Listen, God is Calling

ELW 513

Greeting

P: The grace of our Lord Jesus Christ, the love of God, and the communion of the Holy Spirit, be with you all!

C: And also with you!

Kyrie

A: In peace, let us pray to the Lord.

C: Lord, have mercy.

A: For the peace from above, and for our salvation, let us pray to the Lord.

C: Lord, have mercy.

A: For the peace of the whole world, for the well-being of the church of God, and for the unity of all, let us pray to the Lord.

C: Lord, have mercy.

A: For this holy house, and for all who offer here their worship and praise, let us pray to the Lord.

C: Lord, have mercy.

A: Help, save, comfort, and defend us, gracious Lord.

C: Amen.

Prayer of the Day

A: Let us pray together,

C: O God, the Father of our Lord Jesus, you are the city that shelters us, the mother who comforts us. With your Spirit accompany us on our life's journey, that we may spread your peace in all the world, through your Son, Jesus Christ, our Savior and Lord. Amen.

Children's Message

Pr Paul

First Reading: Isaiah 66:10-14

Those who returned from the exile found that the hopes for the glorious restoration of Judah were not completely fulfilled. For these disappointed people, the prophet envisions salvation in the image of a nursing woman. Mother Jerusalem and a mothering God remind the community how they are sustained and supported.

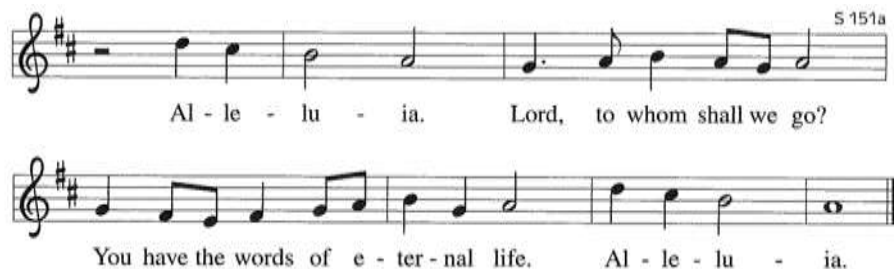
10 Rejoice with Jerusalem, and be glad for her, all you who love her; rejoice with her in joy, all you who mourn over her—11 that you may nurse and be satisfied from her consoling breast; that you may drink deeply with delight from her glorious bosom. 12 For thus says the Lord: I will extend prosperity to her like a river, and the wealth of the nations like an overflowing stream; and you shall nurse and be carried on her arm, and dandled on her knees. 13 As a mother comforts her child, so I will comfort you; you shall be comforted in Jerusalem. 14 You shall see, and your heart shall rejoice; your bodies shall flourish like the grass; and it shall be known that the hand of the Lord is with his servants, and his indignation is against his enemies.

L: The Word of the Lord

C: Thanks be to God

Gospel Acclamation:

Alleluia



Gospel: Luke 10:1-11, 16-20

Jesus commissions harvesters and laborers to go where he would go and do what he would do. Risking hardship and danger in exchange for the experience of great joy, they offer peace and healing as signs that the reign of God is near.

P: A reading from... C: Glory to You, O Lord.

1 After this the Lord appointed seventy others and sent them on ahead of him in pairs to every town and place where he himself intended to go. 2 He said to them, "The harvest is plentiful, but the laborers are few; therefore ask the Lord of the harvest to send out laborers into his harvest. 3 Go on your way. See, I am sending you out like lambs into the midst of wolves. 4 Carry no purse, no bag, no sandals; and greet no one on the road. 5 Whatever house you enter, first say, 'Peace to this house!' 6 And if anyone is there who shares in peace, your peace will rest on that person; but if not, it will return to you. 7 Remain in the same house, eating and drinking whatever they provide, for the laborer deserves to be paid. Do not move about from house to house. 8 Whenever you enter a town and its people welcome you, eat what is set before you; 9 cure the sick who are there, and say to them, 'The kingdom of God has come near to you.'

(continued on next page)

10 But whenever you enter a town and they do not welcome you, go out into its streets and say, 11 ‘Even the dust of your town that clings to our feet, we wipe off in protest against you. Yet know this: the kingdom of God has come near.’” 16 “Whoever listens to you listens to me, and whoever rejects you rejects me, and whoever rejects me rejects the one who sent me.” 17 The seventy returned with joy, saying, “Lord, in your name even the demons submit to us!” 18 He said to them, “I watched Satan fall from heaven like a flash of lightning. 19 See, I have given you authority to tread on snakes and scorpions, and over all the power of the enemy; and nothing will hurt you. 20 Nevertheless, do not rejoice at this, that the spirits submit to you, but rejoice that your names are written in heaven.”

P: The Gospel of the Lord.

C: Praise to you, O Christ.

Sermon

Pastor Paul Busekist

Song of the Day:

We All Are One in Mission

ELW 576

Apostles Creed

I believe in God, the Father almighty, creator of Heaven and earth.

I believe in Jesus Christ, God’s only Son, our Lord, who was conceived by the Holy Spirit, born of the virgin Mary, suffered under Pontius Pilate, was crucified, died, and was buried; he descended to the dead. On the third day he rose again; he ascended into heaven, he is seated at the right hand of the Father, and he will come to judge the living and the dead.

I believe in the Holy Spirit, the holy catholic church, the communion of saints, the forgiveness of sins, the resurrection of the body, and the life everlasting. Amen.

Prayers of the Church / Sign of the Peace *(Let us give one another a sign of peace according to your comfort level.)*

Offering / Offering Song:

Zeke Clemons

Offertory:

Let the Vineyards Be Fruitful





with your pres - ence, and give us a fore - taste of the feast to come.

Offering Prayer

A: Let us pray together.

C: Creator God, in your wisdom you bring forth all that is good and the harvest is plentiful. Strengthen us at your table with these gifts of the earth and our labor, that we may work for the good of all; through Jesus Christ, our Savior. Amen.

Words of Institution

Lord's Prayer

Our Father, who art in heaven, hallowed be thy name, thy kingdom come, thy will be done, on earth as it is in heaven. Give us this day our daily bread; and forgive us our trespasses, as we forgive those who trespass against us; and lead us not into temptation, but deliver us from evil. For thine is the kingdom, and the power, and the glory, forever and ever. Amen.

Communion (*Please note: gluten-free wafers and white grape juice cups are available*)

Communion Songs:

***Let Us Go Now to the Banquet
Spirit of Gentleness***

ELW 523

ELW 396

Final Blessing

P: The love of God abound in you; the grace of our Savior Jesus Christ fill your hearts; and the life of the Spirit
✠ bless you and give you peace.

C: Amen.

Sending Song:

The Lord Now Sends Us Forth

ELW 538

Dismissal

A: Go in peace. Live by the Spirit.

C: Thanks be to God.



Bethlehem July 6, 2025
LUTHERAN CHURCH

HAPPY BIRTHDAY

1050 Peninsula Drive
Traverse City, MI 49686
(231) 947-9880
www.bethlehemtc.org

7/6—Julie Cole
7/7—Michelle Smith

7/8—Carl Lehto
7/8—Judy Block

7/11—Jane Passmore
7/12—Lindsey Mosley

Worship Servants for July 6

Presiding & Preaching—Pastor Paul Busekist

Assisting Minister—Bethany Uhl

Lector—Dave Peppler

Musicians: David Husser, Zeke Clemons, Phil & Denice Bossardet, Pr Paul

Today's altar flowers are donated: *By Jane Fred in Celebration of Norm's 86th Birthday*

Hospitality—Tom Fink & Deb Hissong

A/V—Dale Wentzloff / Jim Hinds

Cookies/Coffee— Diane Cunningham / Mary Ann Tanis

Welcome Table— VOLUNTEER

Bell Ringer—Gail Goldsmith

Front Door Monitor—Gail Goldsmith

Altar Guild—Mary Ann Tanis / Gail Goldsmith

Counters—Laura Hahn / Mike McCarty

Return of Chair Yoga to Bethlehem On July 7th, chair yoga is back at 3:00 on Mondays and Wednesdays to Bethlehem. Cost is still \$5. Invite your friends. It is a great stretching exercise and we work on balance issues.

What IS GRIEVING? Could it be the loss of a marriage, your home, or community, good health, a dream or something else? The list can go on and on. No matter the loss you have a family here at Bethlehem that loves you, wants to support you, and be here for you! **We meet here on the first Monday of the month from 3:30-4:30 and on the third Monday from 5:30-6:30.** If you have any questions, please contact Peggy Burns 231-392-6913.



"Many hands make fast work" Mark your calendars and gather your gear! Sunday, July 20, immediately following our church service, we will do a church clean and polish. We will spend 45-60 minutes cleaning inside windows (as safety permits), vacuuming, dusting, giving bathrooms a good cleaning, eliminating unused items (decluttering), and any other tasks that are identified by staff, the Property committee or other members of the congregation. Please bring any equipment from your home that would be helpful: bucket, paper towel, rags, small hand broom, window cleaner, vinegar mixture - whatever you like to clean with that is also eco-friendly. If we have items with us, we don't diminish the church's supply, although the church does have supplies. Questions: check with Jana Rockne, 231-632-6886.

Bethlehem's Summer Support at Safe Harbor is in Full Swing! Thank you to Patty Leibenguth, Kristen Rivard, Kristen's friend Cindy Gokey, Tom & B.J. Christensen, Tina Dohm, Jim Hutchison, Kathie and Mark Bair, Doug and Diane Cunningham, Makena Dohm, Tim and Peggy Goebel, Lincoln Dohm, Sherri Helman, Claire Hutchison and for taking one or more shifts assisting Safe Harbor Guests. The Bethlehem Lutheran "Hot Dog Picnic" at Safe Harbor was a huge success! Our volunteers brought salads, baked beans, and vegetable trays and grilled, served and cleaned up. Great Lakes Potato Chip Company and Reyes Coca-Cola Bottling provided chips and beverages. It was a "first" for Safe Harbor... courtesy of Bethlehem! More opportunities the third Tuesday in July, August, and September! Maybe another picnic in September! Tom Rockne Bethlehem Safe Harbor Coordinator, M.231-631-0040 or at tomrockne@gmail.com.

Garden News: Thanks to all who have been involved in the garden in any way. If you have not been across the street to check on what's happening, the biggest news is, THE RADISHES ARE UP!!!!. Feel free to go there at any time. Do a little weeding. If any part of the garden looks stressed due to the heat, feel free to sprinkle using the hose on the north fence (irrigation only runs on alternating days). There will be more information when it is time to begin picking. You may meet some new friends from other churches when you are there. If questions contact Cindy at cmorroe@chartermi.net

SUMMER BREAK: Please note that Sunday School, Sunday's Adult Education along with the two Wednesday Bible Studies will not meet during the summer months. Look for the September start dates in the weekly email, bulletins and the STAR at the end of summer.

FREE ENTERTAINMENT: When you just want to do something or take your out-of-town visitors somewhere...

- **Every Wed at 5:30 until the end of July** enjoy classical music from IPR at Little Fleet at the corner of Front and Wellington. You can buy food and drink but you don't have to.
- Hear the NMC Concert Band **Fri July 18 7:30 pm** at Milliken Auditorium
- **"Saturdays in the Park":** 7-9 in the Civic Center all summer (donation bucket available but optional)

Food pantry news: Finally we are seeing glimpses of Summer.

Hopefully it will stick around. The food pantry supplies are running low and could certainly use some donations. When shopping for donations, please consider items with protein like peanut butter, canned ravioli or spaghetti, tuna, and chicken. It would help if you can find cans with the pull-tab opening. The items that we do not need any more of are dried beans, peas, and lentils. Right now we have plenty of soaps but can always use feminine care products.

We don't have to worry about items in the pantry freezing any more so anything you donate can be used immediately. Thank you all for your continuing generosity and willingness to serve our community.

Suzanne and Kathie REMEMBER, YOU CAN GET A THRIVENT GRANT FOR UP TO \$250 FOR FOOD PANTRY ITEMS.



BOOK CLUB NEWS: We are hoping to go to the home of Barb Beyer and our date this month is the final Wednesday, July 30 at 5:30. We will be reading "Caste, The Origins of Our Discontent" by Isabel Wilkerson. Our back-up location will be BLC fellowship hall. Please contact Cindy Monroe at cmonroe@chartermi.net if there are any questions. A list to sign up for items for the potluck will be sent to all those who are interested.

BLC partners with Old Town Playhouse for the musical telling the story of Moses in THE PRINCE OF EGYPT: Still looking for some volunteers to run concessions at Milliken Auditorium on Aug 22 for the 7:00 show and Aug 23 for the 2:00 show. (The youth will be running the concessions on Thursday, Aug 21 and their youth fund will receive the benefits.) For the other days funds earned can be designated to the charity or cause recommended by the volunteers. Bethlehem's Good Samaritan Fund? Project Feed the Kids? Safe Harbor? Grand Traverse Baby Pantry? Another idea? It's easy to sell items before the show and during intermission. Sign up in the gathering space or contact Cindy Monroe at cmonroe@chartermi.net or 231 631 0887 if you can help one of those days. You can also sign-up to reserve tickets to see the show. If tickets are purchased in groups of 6 each will cost \$42 for an adult and \$18 for youth under the age of 18.

Baby Pantry Appreciation: We recently received an email from Sally Hanley, the director of the Baby Pantry that meets in our Fellowship Hall on the second Thursday of each month. Sally thanked those who volunteered and provided various food items. She also mentioned surveys that were given out. Quote from Sally: "In reviewing the results, I noticed that for the first time in a long time, Food was the major family issue, closely followed by Stress, which is usually the top issue. Having our food pantry in place helps us address this emerging need. Fresh produce and protein were also noted as the 2 most appreciated categories of our food pantry section as well. I liked the idea of emphasizing that children are welcome to come to the pantry with you." Thank you all for your donations to the BLC Food Pantry as some of the items are put on a cart where the Baby Pantry families can pick from. Remember diapers, clothing, paper products and cleaning products among the most appreciated items.

SAVE YOUR PAPER SACKS: Please check the nooks and crannies of your home for paper sacks. The Baby Pantry fills requests from preschool teachers for their students whose parents cannot make it to the pantry. Paper sacks are the perfect size to place the needed items for each child. Just place your bags on the Care table in the coat room. Thank you!!

HOW DO WE CARE AND SERVE? John 12:26 “Whoever serves me must follow me; and where I am, my servant will also will be. My Father will honor the one who serves me”. **YOU ARE LOVED BY YOUR CHURCH FAMILY.** If you would like to have a visit and you would like to receive Communion, Christian Care Giving is here for you! Please let Peggy Burns at 231-392-6914 know and we will have one of our Care Givers come and see you.

Alcoholics Anonymous: TC Groups are holding their Open Talk here at Bethlehem on three Saturday nights of each month from 8:00-9:00pm. During July, August and September, the group will be here every Saturday night while the Contra group takes a break.

PROTECT OUR CARPET: spills always happen, but we now have TWO consistent ways to deal with them. Thanks to an anonymous donor we now have an actual carpet cleaning machine stored in the maintenance closet. **If you cause one or see a spot, please grab the spot cleaner in the squirt container below the sink in the fellowship hall ASAP. Just follow the directions on the bottle and we should be able to keep our carpet in good condition. But, if the stain is too big or too resistant, please use the carpet cleaning machine. The longer the stain sits, the harder it is to clean. Thank you!!**

Coffee and Cookies: Our wonderful volunteers Mary Ann Tanis and Diane Cunningham have indicated a willingness to continue offering this after the Sunday service during the summer as long as there are volunteers who bring the goodies and help with clean-up after. Our thanks to these two women for their wonderful display of the goodies and the clean-up after. Thanks to all of you who have shared goodies, and please feel free to continue to do so.

A big thank you to all who have turned in Olesons' slips. On March 31st, we received a check from Olesons for \$275.60 from receipts turned in. This makes a grand total of \$592.66 for the year 2025. Olesons' slips never expire. Please continue to turn in your Olesons receipts to Bethlehem. Thanks so much!!! Also, the area for the Oleson receipts is in the lower cabinets below the mailboxes (under the A-B-Cs...). The cabinet door is marked with the receptacle inside. Unfortunately, we are no longer collecting the receipts from Family Fair or any other grocery store. We just collect for Olesons

Volunteers for Watching the Front Door During Worship: The Safety and Security Committee has the new sign up sheets available. We need volunteers who can be available to stay in the Gathering Space to lock the doors and let in late comers for Sundays. We appreciate all of the volunteers. If you have any questions, the committee members are Gail Goldsmith, Maureen Bauer, and Jana Rockne.

The July issue of the STAR is now available. If you receive the weekly email, your July issue was emailed on June 29th. The shut-ins will receive an issue by mail. There will also be a few copies available on the counter by the mailboxes. You may also contact the office at 947-9880 to request that mail delivery continues. For current issues of the Star, feel free to check online at www.bethlehemtc.org < About Us > “The Online Bethlehem Star” or type this URL to get these directly: <http://www.bethlehemtc.org/the-bethlehem-star-newsletter>.



Spotlight on Zeke: So many of us enjoy Zeke's talents with religious music, but did you know that he plays other kinds of music at various locations in the Traverse City area? Here is a list of his engagements in the next month that are close to TC:

Wed 7/9—The Pub, Traverse City 7:00pm

Thurs 7/10—Mt Holiday, Traverse City 6:00pm

Offerings: Even though the offering plates are passed during the service, you may use the vase in the back of the Sanctuary if you prefer not to touch the offering plate.

IMPORTANT NOTICE: We often find the front door and/or the kitchen door unlocked when there is no one in the building. Please be sure that the doors are locked when you leave.

Please Note:

Barbara Oster/Administrative Assistant works 9:00am-2:30pm on Monday, Tuesday and Thursday

Phil Anderson/Bookkeeper works 8:30am-12:30pm on Monday, Tuesday and Thursday. (this is Phil's summer schedule)

Alanna Steffunick-Boomer/Ministry Coordinator works 9:00am-2:30pm – in the office on Tuesday and Wednesday and from home on Thursday – Please note that this is a new schedule

Looking for a link to last month's full Council minutes? Type this address/url into your web browser to get the latest approved minutes from Council: bethlehemtc.org/Council-Minutes OR you may call the office to request a copy.

Prayer Requests:

- Prayer Chain: Please contact Jan Stretlien at jstretlien@gmail.com or 231-947-3265
- Prayers read from the altar: Please call Administrative Assistant in the church office 231-947-9880 or admin@bethlehemtc.org

Celebrate a new child in your life with a rose on the baptismal font! Cost \$10.00 per rose. Contact Barbara Oster at beo6475@yahoo.com or 231.668.7038.



Norm Fred has helped a previously homeless couple for a few years. They are proud people and do not like to be given charity but they will accept help in the form of donated cans that they can recycle for money. Please bring in your recyclables in for them. **Leave them in plastic bags by the garage.** These are nice people. There, but for the Grace of our God, go we.

Are you looking for the Caring Table for your donations? It is now located inside the coat room to the right. Your donations are very much appreciated.

LOST AND FOUND: If you lose something in the church building, please check our new Lost and Found box located in the Coat Room. Also, if you find something, please put it in the box.

Yarn Available: There is yarn available free for the taking located in the cabinets located under the mailboxes in the Narthex. Take what you need.

Name tags: Your name tags are in your mailboxes. Please retrieve them so you can proudly wear them on Sunday mornings. We often have visitors and with so many recent new members it helps them if they can see a friendly face and attach a name to it.

Have something important going on at Bethlehem that you'd like others to know about? Maybe a Small Group? A Club Event? Feature it on the Screen Announcements, weekly emails and on our Facebook Events Page! If there is something you'd like featured or included in any of these, please reach out to alanna.steffunick@bethlehemtc.org If you are not getting the weekly emails for any reason, please contact Alanna.

Please consider signing up for Altar Flowers for a Sunday service. Please use the sign-up poster in the Narthex by signing on the date you request. Then fill out a pink slip with the necessary information and place it and a check for \$45 (This is a new amount.) The check should be payable to Bethlehem Lutheran Church or BLC) in the offering plate on Sunday morning (Preferable) or during the week, in the Administrative Assistant's mailbox near the church office entrance. You may select either "in honor" or "in memory" or "to celebrate". If someone has already signed on the date you would like, feel free to add your name – we welcome more than one on a Sunday.

Today's Prayer Recipients: Please send and changes or additions by email to admin@bethlehemtc.org

Harper Wiemerslage,
Jerry Hill,
John Block,
Roy DuMond,
Mary Woodring,
Norm Fred,
Lynn,
Steve,
Sherry,
Bob,
Suzanne Lehto,
Dick & Lois Gray,

Milt & Carol Bowes,
Debbie Knopf,
Ron Hellenga,
Jim Rumbach,
John Stretlien,
Judy Fenton,
Cindy Hitesman,
Richard Fernholz,
Julie Lapeer,
Tom & Lee,
Chris,
Dale and Cheryl,
Leroy,

Julie Barrett,
Patti,
Sharon,
Kyle,
Ben,
Marianne,
Christine,
Janet,
Cameron

The church calendar is below. Please be sure to notify the office (admin@bethlehemtc.org or 231.947.9880) to be sure that your group is of the calendar.

Sunday, July 6

10:00am—Worship Service (S)

Monday, July 7

3:00pm—Chair Yoga (FH)

3:30pm—Grief Group (YR)

Tuesday, July 8

Bulletin articles due today

9:00am—Property Work Group

1:00pm—Friendship Bible Study (Offsite)

6:30pm—Executive Committee (Zoom)

7:15pm—OTP Choir Rehearsal (S)

Wednesday, July 9

11:30am—Music Rehearsal (S)

3:00pm—Chair Yoga (FH)

Thursday, July 10

9:00am—Baby Pantry set-up (FH)

10:00am—Baby Pantry (FH)

5:30pm—ACA (FH)

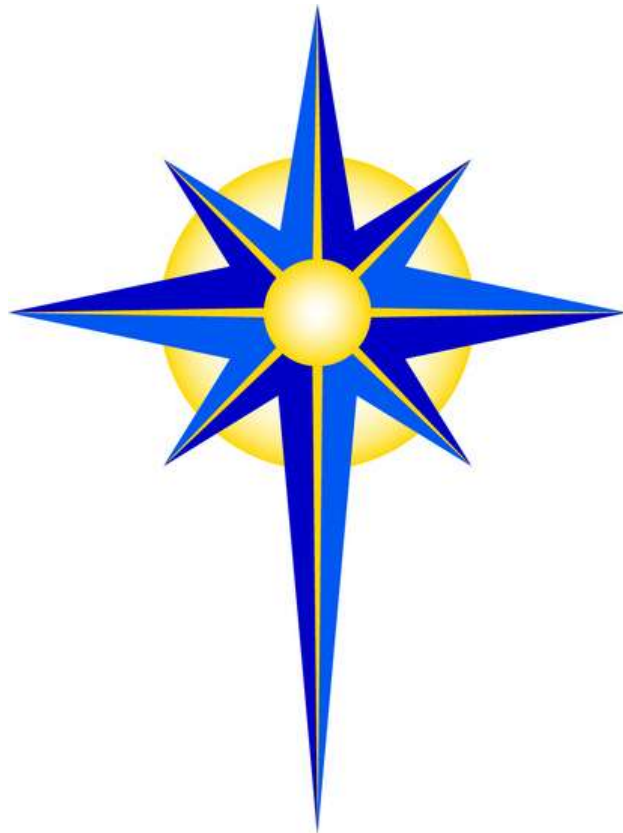
Saturday, July 12

6:00pm—LifeRing Recovery Group (Library)

8:00pm--AA (FH)

Sunday, July 13

10:00am—Traditional Worship Service (S)



Food Pantry Donations Needed!

The outdoor food pantry is
being regularly visited, and
donations are always needed.

Needed Items:

- pull top canned food
- peanut butter
- feminine care products

Thank you
for your care and compassion
for those in need!



Church Clean & Polish

Sunday, July 20th
after worship



Happy Campers Vacation Bible School

July 28-30, 2025
9am - 1pm

