

The Holy Trinity

June 15 2025 – 10am

Modern Worship, ELW Setting 3



Prelude Music

Announcements

Confession and Forgiveness

P: In the name of the Father, and of the ☩ Son, and of the Holy Spirit.
C: Amen.

P: Baptized into Christ, let us confess our sin.

Silence is kept for reflection.

P: Merciful God,

C: ...you free us to love others, but we neglect our neighbors and follow our own way. You lead us by the Spirit of joy and peace, but we turn away from the abundant life you offer. You surround us with patience, kindness, and generosity, but we grow weary in doing what is right. In your mercy, forgive us. Do not give up on us. Heal us, break our bonds, and show us the path of life. Amen.

P: You belong to Christ Jesus and you are God's children through faith. In the cross of ☩ Christ, and through the power of the Holy Spirit, your sins are forgiven. Clothed with Christ, you are a new creation.
C: Amen.

Gathering Song:

Come, All You People

ELW 819

Greeting

P: The grace of our Lord Jesus Christ, the love of God, and the communion of the Holy Spirit, be with you all!
C: And also with you!

Kyrie

A: In peace, let us pray to the Lord.

C: Lord, have mercy.

A: For the peace from above, and for our salvation, let us pray to the Lord.

C: Lord, have mercy.

A: For the peace of the whole world, for the well-being of the church of God, and for the unity of all, let us pray to the Lord.

C: Lord, have mercy.

A: For this holy house, and for all who offer here their worship and praise, let us pray to the Lord.

C: Lord, have mercy.

A: Help, save, comfort, and defend us, gracious Lord.

C: Amen.

Prayer of the Day

A: Let us pray together,

C: Almighty Creator and ever-living God: we worship your glory, eternal Three-in-One, and we praise your power, majestic One-in-Three. Keep us steadfast in this faith, defend us in all adversity, and bring us at last into your presence, where you live in endless joy and love, Father, Son, and Holy Spirit, one God, now and forever. Amen.

First Reading: Proverbs 8:1-4, 22-31

In the Bible, wisdom is portrayed in terms sometimes human and sometimes divine. Often, wisdom is personified as feminine. In this passage, Woman Wisdom is depicted not only as the first creation of God, but also as God's helper, rejoicing in God's creation, especially in human beings.

1 Does not wisdom call, and does not understanding raise her voice? 2 On the heights, beside the way, at the crossroads she takes her stand; 3 beside the gates in front of the town, at the entrance of the portals she cries out: 4 "To you, O people, I call, and my cry is to all that live. 22 The Lord created me at the beginning of his work, the first of his acts of long ago. 23 Ages ago I was set up, at the first, before the beginning of the earth. 24 When there were no depths I was brought forth, when there were no springs abounding with water. 25 Before the mountains had been shaped, before the hills, I was brought forth—26 when he had not yet made earth and fields, or the world's first bits of soil. 27 When he established the heavens, I was there, when he drew a circle on the face of the deep, 28 when he made firm the skies above, when he established the fountains of the deep, 29 when he assigned to the sea its limit, so that the waters might not transgress his command, when he marked out the foundations of the earth, 30 then I was beside him, like a master worker; and I was daily his delight, rejoicing before him always, 31 rejoicing in his inhabited world and delighting in the human race."

L: The Word of the Lord

C: Thanks be to God

Psalm: Psalm 8

1 O Lord our Lord, how majestic is your name in all the earth!—

2 you whose glory is chanted above the heavens out of the mouths of infants and children; you have set up a fortress against your enemies, to silence the foe and avenger.

3 When I consider your heavens, the work of your fingers, the moon and the stars you have set in their courses,

4 what are mere mortals that you should be mindful of them, human beings that you should care for them?

5 Yet you have made them little less than divine; with glory and honor you crown them.

6 You have made them rule over the works of your hands; you have put all things under their feet:

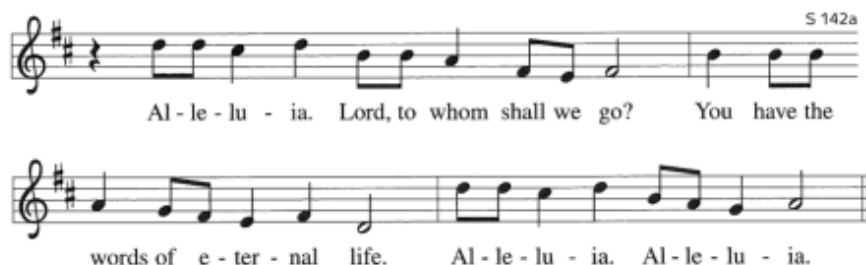
7 all flocks and cattle, even the wild beasts of the field,

8 the birds of the air, the fish of the sea, and whatever passes along the paths of the sea.

9 O Lord our Lord, how majestic is your name in all the earth!

Gospel Acclamation:

Alleluia



Gospel:

Jesus' ongoing presence with the disciples will be made known through the coming Spirit who will guide them and communicate to them Jesus' will and glory.

P: A reading from... **C: Glory to You, O Lord.**

Jesus said, 12 "I still have many things to say to you, but you cannot bear them now. 13 When the Spirit of truth comes, he will guide you into all the truth; for he will not speak on his own, but will speak whatever he hears, and he will declare to you the things that are to come. 14 He will glorify me, because he will take what is mine and declare it to you. 15 All that the Father has is mine. For this reason I said that he will take what is mine and declare it to you."

P: The Gospel of the Lord.

C: Praise to you, O Christ.

Sermon

Peggy Burns, S.A.M.

Song of the Day:

Holy, Holy, Holy, Lord God Almighty

ELW 413

Apostles Creed

I believe in God, the Father almighty, creator of Heaven and earth.

I believe in Jesus Christ, God's only Son, our Lord, who was conceived by the Holy Spirit, born of the virgin Mary, suffered under Pontius Pilate, was crucified, died, and was buried; he descended to the dead. On the third day he rose again; he ascended into heaven, he is seated at the right hand of the Father, and he will come to judge the living and the dead.

I believe in the Holy Spirit, the holy catholic church, the communion of saints, the forgiveness of sins, the resurrection of the body, and the life everlasting. Amen.

Prayers of the Church / Sign of the Peace *(Let us give one another a sign of peace according to your comfort level.)*

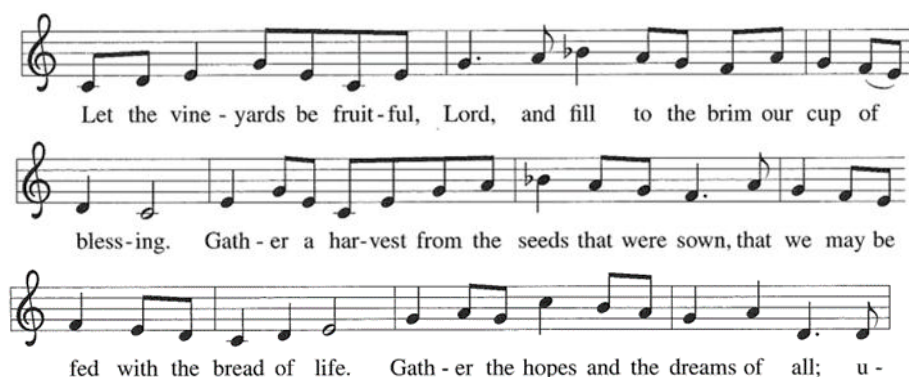
Offering / Offering Song:

Zeke Clemons

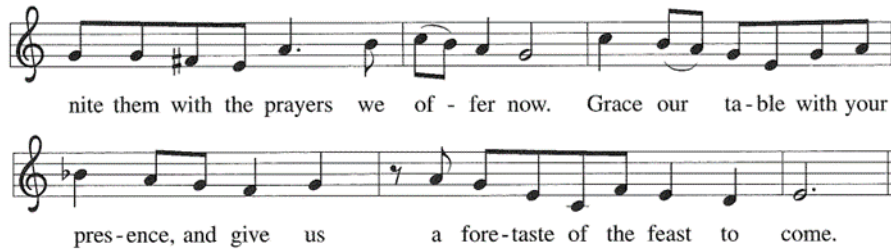
Offertory:

Let the Vineyards Be Fruitful

pg 184



(continued on next page)



Offering Prayer

A: Let us pray together.

C: Creator God, in your wisdom you bring forth all that is good and the harvest is plentiful. Strengthen us at your table with these gifts of the earth and our labor, that we may work for the good of all; through Jesus Christ, our Savior. Amen.

Words of Institution

Lord's Prayer

Our Father, who art in heaven, hallowed be thy name, thy kingdom come, thy will be done, on earth as it is in heaven. Give us this day our daily bread; and forgive us our trespasses, as we forgive those who trespass against us; and lead us not into temptation, but deliver us from evil. For thine is the kingdom, and the power, and the glory, forever and ever. Amen.

Communion *(Please note: gluten-free wafers and white grape juice cups are available)*

Communion Songs:

***Taste and See
We Come to the Hungry Feast***

***ELW 493
ELW 479***

Final Blessing

P: The love of God abound in you; the grace of our Savior Jesus Christ fill your hearts; and the life of the Spirit ✠ bless you and give you peace.

C: Amen.

Sending Song:

You Are Holy (Prince of Peace)

(Verse 1 and Chorus sung through twice, congregation in bold)

Verse 1

You are holy (**You are holy**)
 You are mighty (**You are mighty**)
 You are worthy (**You are worthy**)
 Worthy of praise (**worthy of praise**)
 I will follow (**I will follow**)
 I will listen (**I will listen**)
 I will love You (**I will love You**)
 All of my days (**all of my days**)

(continued on next page)

Chorus 1 Will Be Sung Simultaneously

Chorus 1 - Leader

I will sing to and worship
The King who is worthy
And I will love and adore Him
And I will bow down before Him
And I will sing to and worship
The King who is worthy
And I will love and adore Him
And I will bow down before Him
You're my Prince of Peace
And I will live my life for You

Chorus 1 - Congregation

You are Lord of lords You are King of kings
You are mighty God Lord of ev'rything
You're Emmanuel You're the Great I Am
You're the Prince of Peace who is the Lamb
You're the living God You're my saving grace
You will reign forever You are Ancient of Days
You are Alpha Omega Beginning and End
You're my Savior Messiah Redeemer and Friend
You're my Prince of Peace
And I will live my life for You
(Repeat Verse 1 and Chorus 1)

Dismissal

A: Go in peace. Live by the Spirit.

C: Thanks be to God.



Bethlehem June 15, 2025
LUTHERAN CHURCH

HAPPY BIRTHDAY

6/15—BJ Christensen
6/15—Becky Price

6/19—Rita Kucera
6/19—Jessilyn Wallington

6/19—Forrest Bowling
6/22—Nancy Schmidt

1050 Peninsula Drive
Traverse City, MI 49686
(231) 947-9880
www.bethlehemtc.org

Worship Servants for June 15

Presiding—Pastor Paul Busekist

Assisting Minister/Preaching—Peggy Burns, S.A.M.

Lector—Tim Goebel

Musicians: David Husser, Zeke Clemons, Phil & Denice Bossardet, Pr Paul

Today's altar flowers are donated: *by Tom & Jana Rockne in Celebration of their 50th wedding anniversary*
by John & Jan Stretlien in Celebration of their 61st wedding anniversary

Hospitality—Tim & Peggy Goebel

A/V—Jim Hinds / Paul Ton

Cookies/Coffee—VOLUNTEER / Mary Ann Tanis

Welcome Table—VOLUNTEER

Bell Ringer—Tim Goebel

Front Door Monitor—Butch Waisenen

Altar Guild—Mary Ann Tanis / Gail Goldsmith

Counters—John Halstead / Forrest Bowling

What IS GRIEVING? Could it be the loss of a marriage, your home, or community, good health, a dream or something else? The list can go on and on. No matter the loss you have a family here at Bethlehem that loves you, wants to support you, and be here for you! We meet here on **the first Monday of the month from 3:30-4:30 and on the third Monday from 5:30-6:30**. If you have any questions, please contact Peggy Burns 231-392-6913.

It's that time again! The Youth Program will once again be holding their annual parking lot fundraiser, and we are in need of volunteers! The fundraiser is run before the two weekend airshows, and before the 4th of July fireworks.

All proceeds fund the ongoing youth activities at Bethlehem. The fundraiser will be held on:

- **Saturday June 28th from 10am-1pm**
- **Sunday June 29th from 9am-1pm**
- **Friday July 4th from 6pm-10:30pm**

You can sign up for one, or multiple! The youth are front and center welcoming cars and taking payment, while adult volunteers will direct cars to parking spaces. **Please note that the back entrance off of Peninsula Drive will be the only entrance open when you come for church that Sunday!** If you are interested in volunteering, there will be a sign-up sheet in the Narthex, or you can reach out to Alanna directly at alanna.steffunick@bethlehemtc.org Thank you for volunteering!



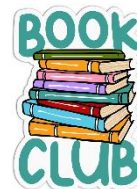
THE FAITH REFORMED GARDENS ARE HAPPENING!!!! A Crew of dedicated workers cleared the 2 huge beds earmarked for BLC of weeds. Some seeds were chosen from the free seed bucket and will be passed on to anyone who can go to our gardens on a Saturday morning, the designated late planting time. Even if you cannot go then, you can go at any time as long as you make certain the gate is tightly closed behind you when you leave. Trickle irrigation runs every other day, but you can also use the spigot by the north fence to get extra water for any plant in need. Don Sheehan selected the best seeds. When veggies are ready Food Rescue will have designated pick-up days. If there is too much of any item it can be placed in our food pantry or given to our members who may be in need. The beds are slightly raised so you can take a low chair or stool and take part. The gardens for BLC are temporarily labeled with cards until our official plaques arrive. Just walk in the gate facing Faith Reformed and look to the right. Enjoy making others happy and healthy! For any questions, contact Cindy Monroe (231-631-0887 or cmonroe@chartermi.net)

Food pantry news: Finally we are seeing glimpses of Spring. Hopefully it will stick around. The food pantry supplies are running low and could certainly use some donations. When shopping for donations, please consider items with protein like peanut butter, canned ravioli or spaghetti, tuna, and chicken. It would help if you can find cans with the pull-tab opening. The items that we do not need any more of are dried beans, peas, and lentils. Right now we have plenty of soaps but can always use feminine care products. We don't have to worry about items in the pantry freezing any more so anything you donate can be used immediately. Thank you all for your continuing generosity and willingness to serve our community. Suzanne and Kathie REMEMBER, YOU CAN GET A THRIVENT GRANT FOR UP TO \$250 FOR FOOD PANTRY ITEMS.

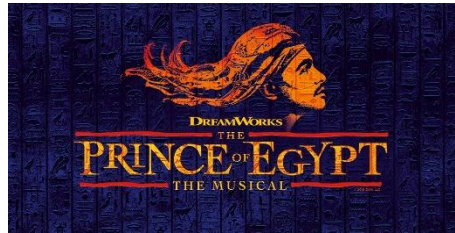
More Chair Yoga: Special Note: the class is taking a few weeks off while Janet, the leader, will be out of the country. Class will return on July 7th. Bethlehem has added another Chair Yoga class per week. You now have two opportunities to attend: Monday and Wednesday at 3:00pm. The cost is \$5 and Janet Weaver will be the instructor. People can attend one or both classes per week. Gail Goldsmith will continue to be the church representative for the Monday class and Cindy Monroe will be the church representative for the Wednesday class. It is a great opportunity to stretch and work on balance issues.

SUMMER BREAK: Please note that Sunday School, Sunday's Adult Education along with the two Wednesday Bible Studies will not meet during the summer months. Look for the September start dates in the weekly email, bulletins and the STAR at the end of summer.

BOOK CLUB NEWS: We are uncertain of our location but our next date is the 4th Wednesday in July, which is July 30th at 5:30. We will be reading "Caste, The Origins of Our Discontent" by Isabel Wilkerson. If you plan to come, please contact Cindy Monroe at cmonroe@chartermi.net and watch the bulletin and email blast for the location.



SAVE YOUR PAPER SACKS: Please check the nooks and crannies of your home for paper sacks. The Baby Pantry fills requests from preschool teachers for their students whose parents cannot make it to the pantry. Paper sacks are the perfect size to place the needed items for each child. Just place your bags on the Care table in the coat room. Thank you!!



BLC partners with Old Town Playhouse for the musical telling the story of Moses in THE PRINCE OF EGYPT: How exciting that this summer we will have rehearsals for this amazing musical here in this building! If you want to audition to be on stage or be part of the supporting community choir you can follow this link to sign up: www.oldtownplayhouse.com/egypt **Performances will be Aug 21 and 22 at 7:00 and Aug 23 at 2:00 at Milliken Auditorium.** The youth will be running the concessions on Thursday, Aug 21 and their youth fund will receive the benefits. We need other volunteers for the two other performances and the funds earned can be designated to the charity or cause recommended by the volunteers. Bethlehem's Good Samaritan Fund? Project Feed the Kids? Safe Harbor? Grand Traverse Baby Pantry? Another idea? It's easy to sell items before the show and during intermission. Sign up in the gathering space or contact Cindy Monroe at cmonroe@chartermi.net or 231 631 0887 if you can help one of those days. Also, do you want to reserve tickets to see the show? If tickets are purchased in groups of 6 each will cost \$42 for an adult and \$18 for youth under the age of 18. Sign up sheets for the tickets will also be in the gathering space.

HOW DO WE CARE AND SERVE? John 12:26 "Whoever serves me must follow me; and where I am, my servant will also will be. My Father will honor the one who serves me". **YOU ARE LOVED BY YOUR CHURCH FAMILY.** If you would like to have a visit and you would like to receive Communion, Christian Care Giving is here for you! Please let Peggy Burns at 231-392-6914 know and we will have one of our Care Givers come and see you.

Bethlehem's support of Safe Harbor's Summer has begun. On May 20, we assisted Safe Harbor professionals with check-in, dispensing guest's medications, allocating shower and washing machine time, and helping them find their places and get settled for the night. The following morning, we assisted with coffee brewing and serving, packing and storing their gear, and getting them ready for the day. **We will do this again on 17 June, 15 July, 19 August, and 16 September.** Please help us fulfill our commitment by volunteering for one of these evenings. Again, about 5:30-8:30PM... or for the following morning at about 7:00AM-9:30PM. We really need your participation. Please call, text or e-mail Tom Rockne to volunteer... Thank you!

DRIVING VOLUNTEERS?: Thanks to those who have already said "yes" to being a regular or substitute driver to transport a delightful member couple to church. They have good mobility but due to other health issues currently cannot drive. They live just north of the east end of 14th street. If you would like to be added to the list of volunteers please contact Cindy Monroe at cmonroe@chartermi.net or 231 631 0887.

PROTECT OUR CARPET: spills always happen, but we now have TWO consistent ways to deal with them. Thanks to an anonymous donor we now have an actual carpet cleaning machine stored in the maintenance closet. **If you cause one or see a spot, please grab the spot cleaner in the squirt container below the sink in the fellowship hall ASAP.** Just follow the directions on the bottle and we should be able to keep our carpet in good condition. But, if the stain is too big or too resistant, please use the carpet cleaning machine. The longer the stain sits, the harder it is to clean. Thank you!!

Alcoholics Anonymous: TC Groups are holding their Open Talk here at Bethlehem on three Saturday nights of each month from 8:00-9:00pm. During July, August and September, the group will be here every Saturday night while the Contra group takes a break.

Coffee and Cookies on Sunday: Remember that treats and a drink on Sunday are appreciated by all. You are welcome to bring cookies but please help clean up after.

A big thank you to all who have turned in Olesons' slips. On March 31st, we received a check from Olesons for \$275.60 from receipts turned in. This makes a grand total of \$592.66 for the year 2025. Olesons' slips never expire. Please continue to turn in your Olesons receipts to Bethlehem. Thanks so much!!! Also, the area for the Oleson receipts is in the lower cabinets below the mailboxes (under the A-B-Cs...). The cabinet door is marked with the receptacle inside. Unfortunately, we are no longer collecting the receipts from Family Fair or any other grocery store. We just collect for Olesons

Volunteers for Watching the Front Door During Worship: The Safety and Security Committee has the new sign up sheets available. We need volunteers who can be available to stay in the Gathering Space to lock the doors and let in late comers for Sundays. We appreciate all of the volunteers. If you have any questions, the committee members are Gail Goldsmith, Maureen Bauer, and Jana Rockne.

The June issue of the STAR is now available. If you receive the weekly email, your June issue was emailed on June 1st. The shut-ins will receive an issue by mail. There will also be a few copies available on the counter by the mailboxes. You may also contact the office at 947-9880 to request that mail delivery continues. For current issues of the Star, feel free to check online at www.bethlehemtc.org < About Us > "The Online Bethlehem Star" or type this URL to get these directly: <http://www.bethlehemtc.org/the-bethlehem-star-newsletter>.

The Grand Traverse Baby Pantry works out of our church to provide a variety of baby items to almost 100 families each month. You may not know it, but they also provide food items and cleaning products when they are available. Right now the pantry is in critical need of household cleaning products. They have completely run out. Next time you're out shopping, please consider picking up a few cleaning products for the baby pantry. You can leave your donations in the coat room on the table. On behalf of the Grand Traverse Baby Pantry, thanks to all who continue to donate so that we can provide this much needed resource to the community.



Spotlight on Zeke: So many of us enjoy Zeke's talents with religious music, but did you know that he plays other kinds of music at various locations in the Traverse City area? Here is a list of his engagements in the next month that are close to TC:

Wed 6/18 & 6/25—The Pub, Traverse City 7:00pm **Sat 6/28**—Brady's, Traverse City 6:30pm

IMPORTANT NOTICE: We often find the front door and/or the kitchen door unlocked when there is no one in the building. Please be sure that the doors are locked when you leave.

Please Note:

Barbara Oster/Administrative Assistant works 9:00am-2:30pm on Monday, Tuesday and Thursday
Phil Anderson/Bookkeeper works 8:30am-12:30pm on Monday, Tuesday and Thursday. (this is Phil's summer schedule)

Alanna Steffunick-Boomer/Ministry Coordinator works 9:00am-2:30pm – in the office on Tuesday and Wednesday and from home on Thursday – **Please note that this is a new schedule**

Looking for a link to last month's full Council minutes? Type this address/url into your web browser to get the latest approved minutes from Council: bethlehemtc.org/Council-Minutes OR you may call the office to request a copy.

Prayer Requests:

- Prayer Chain: Please contact Jan Stretlien at jstretlien@gmail.com or 231-947-3265
- Prayers read from the altar: Please call Administrative Assistant in the church office 231-947-9880 or admin@bethlehemtc.org

Celebrate a new child in your life with a rose on the baptismal font! Cost \$10.00 per rose. Contact Barbara Oster at beo6475@yahoo.com or 231.668.7038.

Norm Fred has helped a previously homeless couple for a few years. They are proud people and do not like to be given charity but they will accept help in the form of donated cans that they can recycle for money. Please bring in your recyclables in for them. **Leave them in plastic bags by the garage.** These are nice people. There, but for the Grace of our God, go we.

LOST AND FOUND: If you lose something in the church building, please check our new Lost and Found box located in the Coat Room. Also, if you find something, please put it in the box.



Yarn Available: There is yarn available free for the taking located in the cabinets located under the mailboxes in the Narthex. Take what you need.

Name tags: Your name tags are in your mailboxes. Please retrieve them so you can proudly wear them on Sunday mornings. We often have visitors and with so many recent new members it helps them if they can see a friendly face and attach a name to it.

Have something important going on at Bethlehem that you'd like others to know about? Maybe a Small Group? A Club Event? Feature it on the Screen Announcements, weekly emails and on our Facebook Events Page! If there is something you'd like featured or included in any of these, please reach out to alanna.steffunick@bethlehemtc.org If you are not getting the weekly emails for any reason, please contact Alanna.

Please consider signing up for Altar Flowers for a Sunday service. Please use the sign-up poster in the Narthex by signing on the date you request. Then fill out a pink slip with the necessary information and place it and **a check for \$45 (This is a new amount.)** The check should be payable to Bethlehem Lutheran Church or BLC) in the offering plate on Sunday morning (Preferable) or during the week, in the Administrative Assistant's mailbox near the church office entrance. You may select either "in honor" or "in memory" or "to celebrate". If someone has already signed on the date you would like, feel free to add your name – we welcome more than one on a Sunday.

We are wanting to update the list of people we pray for. If everyone could look at the list and let us know of any changes, whether it is people who can be taken off, or should be added, we would appreciate it. Please respond by email to admin@bethlehemtc.org

Harper Wiemerslage,
Jerry Hill,
John Block,
Roy DuMond,
Mary Woodring,
Norm Fred,
Lynn,
Steve,
Sherry,
Bob,
Milt & Carol Bowes,
Debbie Knopf,
Ron Hellenga,
Jim Rumbach,
John Stretlien,
Judy Fenton,
Cindy Hitesman,

Richard Fernholz,
Julie Lapeer,
Tom & Lee,
Chris,
Dale and Cheryl,
Leroy,
Julie Barrett,
Patti,
Sharon,
Kyle,
Ben,
Marianne,
Christine,
Janet,
Cameron,
Lindsay

The church calendar is below. Please be sure to notify the office (admin@bethlehemtc.org or 231.947.9880) to be sure that your group is of the calendar.

Sunday, June 15

10:00am—Worship Service (S)

Monday, June 16

5:30pm—Grief Group (FH)

Tuesday, June 17

Bulletin articles due today

9:00am—Property Work Group

6:30pm—Council Meeting (Library)

Wednesday, June 18

11:30am—Music Rehearsal (S)

Thursday, June 19

5:30pm—ACA (FH)

Friday, June 20

STAR ARTICLES DUE TODAY

10:00am—Sew Pieceful (FH)

1:00pm—Lehto SG (Library)

Saturday, June 21

3:30pm—Parking Lot rental

6:00pm—LifeRing Recovery Group (Library)

8:00pm—AA (FH)

Sunday, June 22

10:00am—Worship Service (S)

11:15am—Craft Show Leader Team (Library)

1:45pm—St. Andrews Society of Northern Michigan (FH)

